

NEW LISTING | FOR LEASE
5805 US HIGHWAY 27 N | OFFICE
SEBRING, FL 33870



I4 PROPERTIES
— GROUP —



THE PROPERTY

Two story 7,000 SF office building fronting US Hwy 27. Built in 2000. 3,500 SF per floor. Spacious floor plan.

PROPERTY FEATURES

- 7,000 SF available
- \$8.00/SF NNN
- Highway frontage
- 6th Street SE frontage
- Monument signage
- Ample parking
- Excellent highway visibility
- Population of 45,000+ within five mile radius
- Furnished building
- 31,000+ traffic per day



I4 Properties Group
www.i4propertiesgroup.com

CHRIS ADAMS

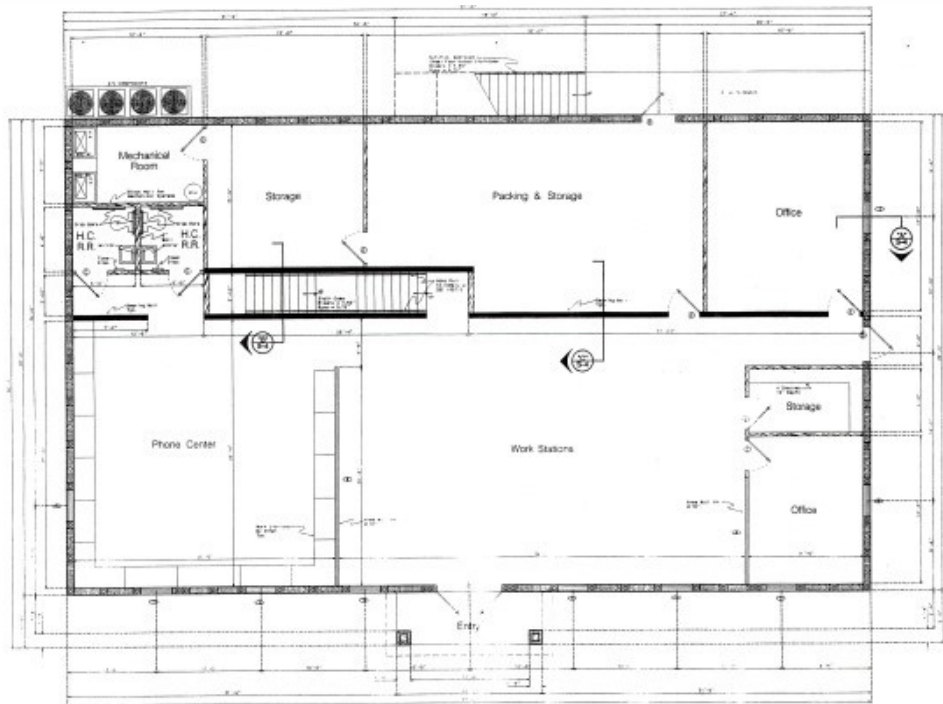
Broker

863.559.2829

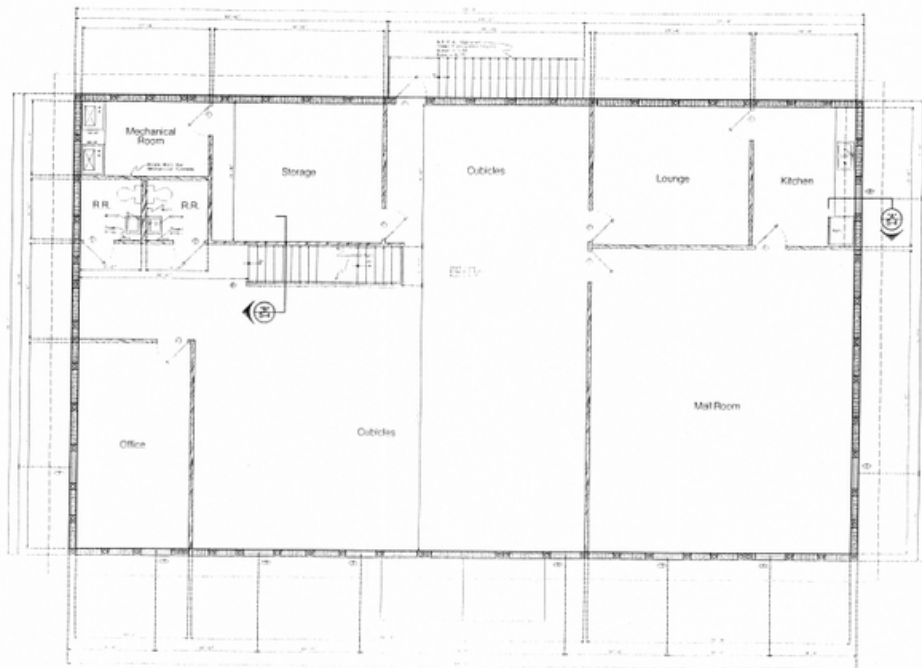
chris@i4propertiesgroup.com



Building Floor Plan



1st Floor Plan



2nd. Floor Plan