



# For sublease

## Office/Warehouse Space Available

#39 North Plains Industrial Road, Wallingford, CT

13,250 RSF Available

 **JLL** SEE A BRIGHTER WAY

# Space Overview

**#39 North Plains Industrial Road,  
Wallingford, CT  
13,250 RSF Available**

Size: 13,250 RSF

Class: B

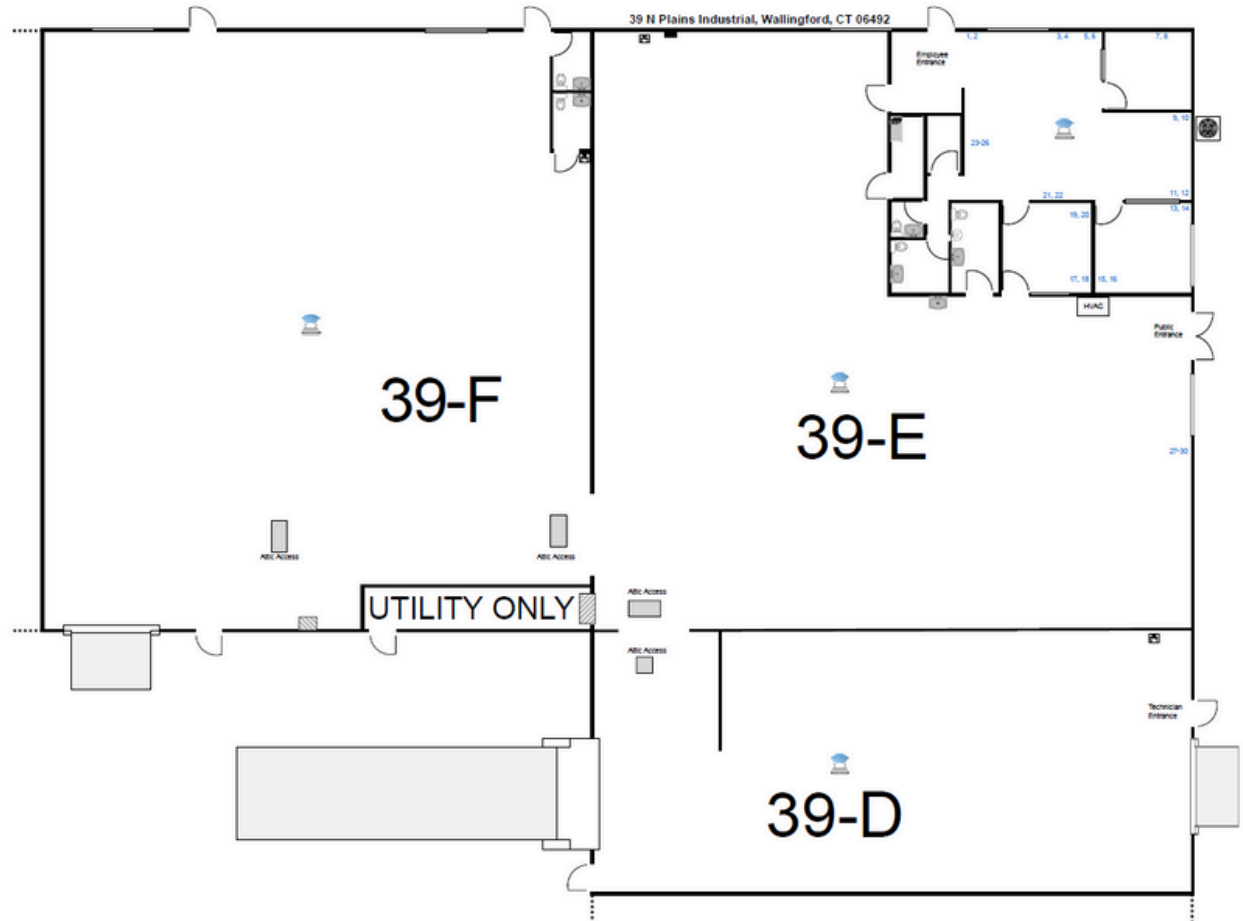
Term: through April 2027

Parking: Free surface parking

Space available in multi-tenant building in an industrial park. Lease rate has an additional CAM of \$2.46/SF

## Property Highlights:

- 2 Drive-in Doors/1 Loading Dock
- Easy access to I-91 and Merrit Parkway
- Retail/Industrial Building
- Located off I-91, Exit 15 and Route 15, Exit 66
- Public Transportation

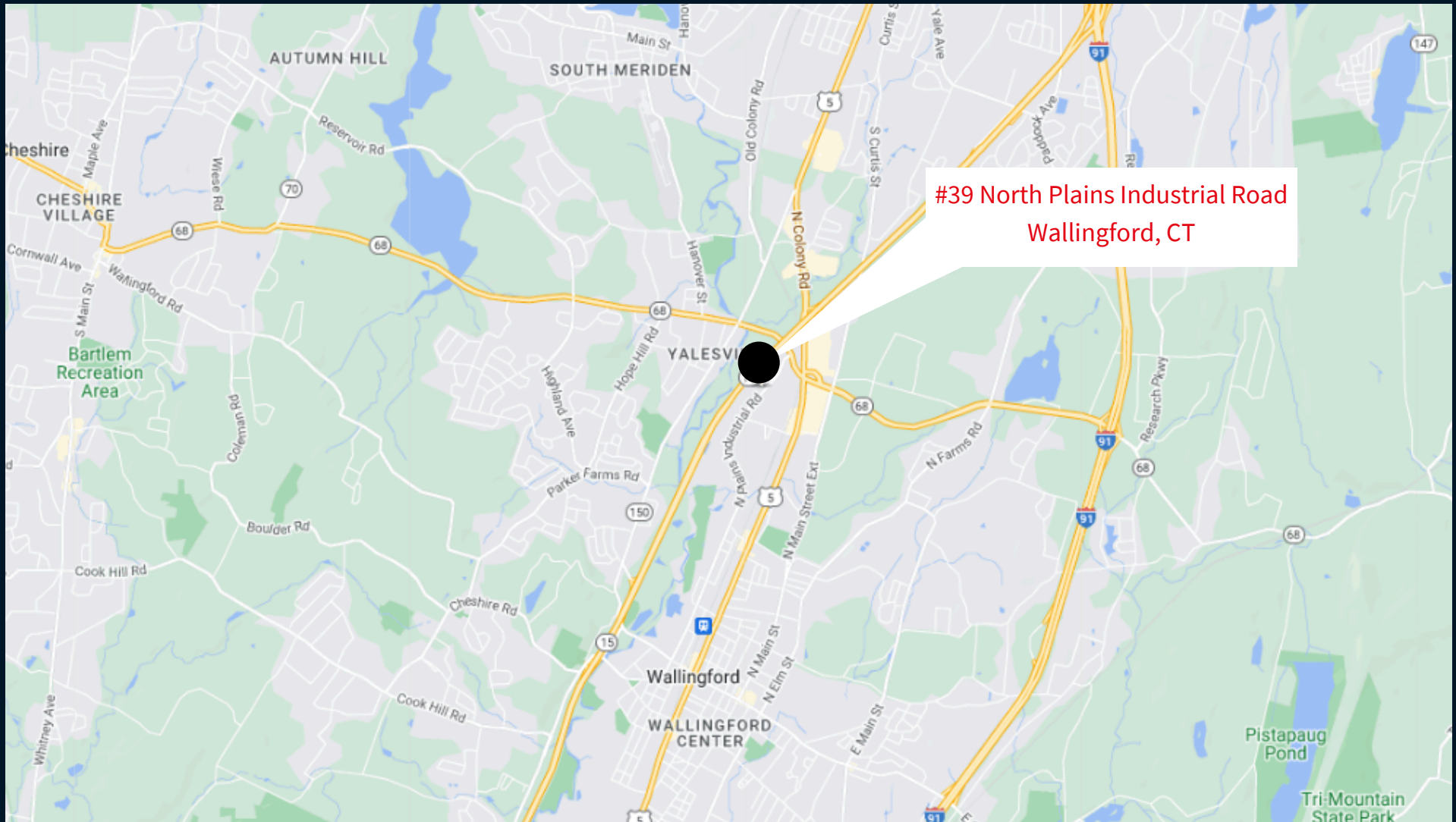


# Additional Photos



# Additional Photos





Christopher Ostop  
Managing Director  
christopher.ostop@jll.com  
+1 860 702 2835

Curtis Ellmore  
Managing Director  
curtis.ellmore@jll.com  
+1 949 885 2929

Dillon Knight  
Senior Associate  
dillon.knight@jll.com  
+1 805 822 9173