

NORTHSIDE CENTER
3309-3329 Northside Drive
Macon, GA 31210



Summary

Improvements

Floor Plan &
Photos

Aerial

Site Map

AVAILABLE 750 SF



Small 1-2 person office suite
Private office, restroom, and break room

CONTACT

Larry E Crumbley, CCIM, SIOR, CPM
478-746-9421 Office
478-737-3381 Cell
lcrumbley@fickling.com

Joesph Bowen
478-746-9421 Office
478-538-6026 Cell
jbowen@fickling.com



577 Mulberry St, Suite 1100
Macon, GA 31201
478.746.9421 Office
<https://commercial.fickling.com>

PROPERTY INFORMATION

BUILDING:

Property Address: 3309-3329 Northside Dr
Macon, GA 31210

County: Bibb

Total Available: Suite 3325: 750 SF

Improvements: Floor plan attached
New LED lighting

Utilities: All utilities available

Parking: Ample and shared

Signage: Pylon and facade

Traffic Count: Northside Drive – 10,223 VPD
Riverside Drive – 14,766 VPD

SITE:

Site Size: 0.78 Acres

Parcel ID: N044-0010

Zoning: C-1

Frontage: 268' frontage on Northside Drive

LEASE RATE: \$900/month

Rents include CAM, Taxes & Insurance

Rent could vary, depending upon improvements
(Owner will construct offices for qualified businesses)
Property is owned by a GA Licensed Real Estate Agent

CONTACT

Larry E Crumbley, CCIM, SIOR, CPM
478-746-9421 Office
478-737-3381 Cell
lcrumbley@fickling.com

Joesph Bowen
478-746-9421 Office
478-538-6026 Cell
jbowen@fickling.com



577 Mulberry St, Suite 1100
Macon, GA 31201
478.746.9421 Office
<https://commercial.fickling.com>

PROPERTY INFORMATION

PROPERTY:

This ±9,715 SF commercial strip center offers excellent visibility and accessibility in the heart of North Macon.

The center features ample paved parking, Northside Drive pylon signage, and a strong traffic count of over 10,223 vehicles per day.

The 750 SF space is ideal for small service business or one- or two- person office suite.

The landlord will build out offices for qualified tenants - making this a turnkey opportunity in a growing corridor.

LOCATION INFORMATION:

Located on Northside Drive, just one block from Riverside Drive and with quick access to I-75, this property is ideal for office, medical, retail, or professional service users.

Nearby Businesses include: Georgia Diversified Brokers, Georgia Cardiology Associates, Colonial Life Insurance, State Farm Insurance, Stone Insurance, Atrium Health Navicent Rehabilitation, Atrium Health Navicent Urgent Care and Arby's.

DEMOGRAPHICS 2024	1 MILE	3 MILES	5 MILES
POPULATION	3,966	27,815	77,938
MEDIAN AGE	38.3	36.7	36.4
AVG HH INCOME	\$90,508	\$112,985	\$91,170

CONTACT

Larry E Crumbley, CCIM, SIOR, CPM
478-746-9421 Office
478-737-3381 Cell
lcrumbley@fickling.com

Joesph Bowen
478-746-9421 Office
478-538-6026 Cell
jbowen@fickling.com



577 Mulberry St, Suite 1100
Macon, GA 31201
478.746.9421 Office
<https://commercial.fickling.com>

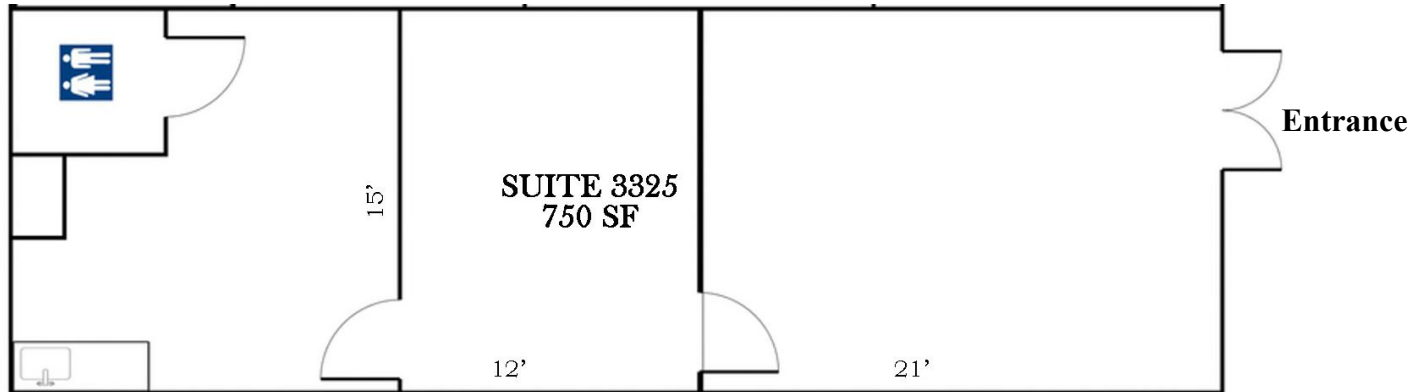
Summary

Improvements

Floor Plan &
Photos

Aerial

Site Map



*All measurements and all calculations of area are approximate and not guaranteed

CONTACT

Larry E Crumbley, CCIM, SIOR, CPM

478-746-9421 Office

478-737-3381 Cell

lcrumbley@fickling.com

Joesph Bowen

478-746-9421 Office

478-538-6026 Cell

jbowen@fickling.com



577 Mulberry St, Suite 1100

Macon, GA 31201

478.746.9421 Office

<https://commercial.fickling.com>

NORTHSIDE CENTER

3309-3329 Northside Drive
Macon, GA 31210



Summary

Improvements

Floor Plan &
Photos

Aerial

Site Map

AERIAL



CONTACT

Larry E Crumbley, CCIM, SIOR, CPM
478-746-9421 Office
478-737-3381 Cell
lcrumbley@fickling.com

Joesph Bowen
478-746-9421 Office
478-538-6026 Cell
jbowen@fickling.com



577 Mulberry St, Suite 1100
Macon, GA 31201
478.746.9421 Office
<https://commercial.fickling.com>

NORTHSIDE CENTER

3309-3329 Northside Drive
Macon, GA 31210



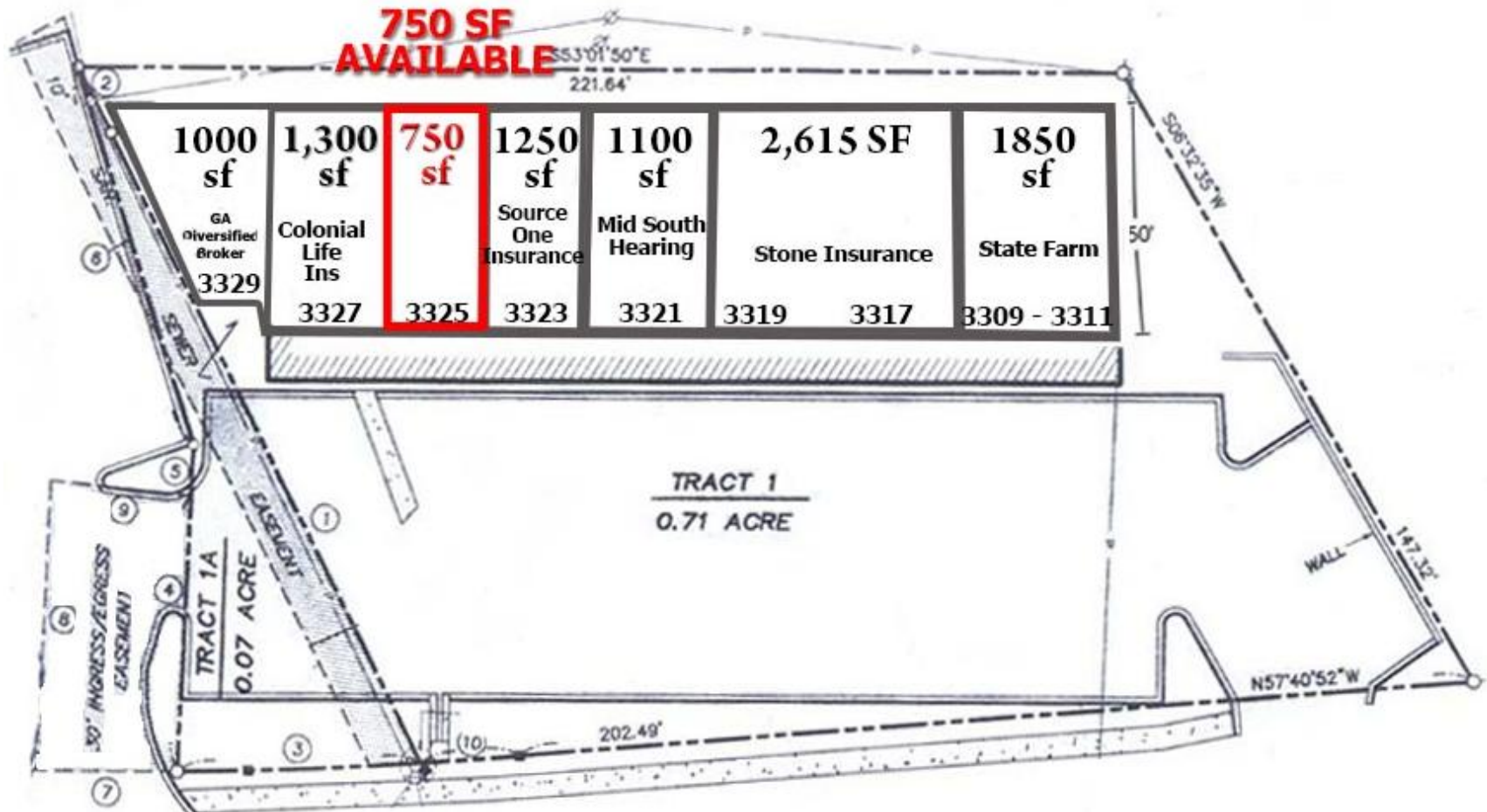
Summary

Improvements

Floor Plan &
Photos

Aerial

Site Map



CONTACT

Larry E Crumbley, CCIM, SIOR, CPM
478-746-9421 Office
478-737-3381 Cell
lcrumbley@fickling.com

Joesph Bowen
478-746-9421 Office
478-538-6026 Cell
jbowen@fickling.com



577 Mulberry St, Suite 1100
Macon, GA 31201
478.746.9421 Office
<https://commercial.fickling.com>