



OFFICE BUILDING FOR LEASE

# CORPORATE LANDING MEDICAL CENTER

1232 PERIMETER PARKWAY, VIRGINIA BEACH, VA 23454





# CORPORATE LANDING MEDICAL CENTER

1232 PERIMETER PARKWAY, VIRGINIA BEACH, VA 23454

PROPERTY OVERVIEW



## OFFERING SUMMARY

Available SF:	498 - 2,984 SF
Lease Rate:	\$24.00 SF/yr (Full Service)
Building Size:	20,000 SF

AVAILABLE SPACES

SF

Suite 203	498 - 2,984 SF
Suite 205	2,486 - 2,984 SF

## PROPERTY OVERVIEW

20,000-square-foot Class A brick and glass, medical office building. Current tenants include: Chiropractic Center, Chesapeake Bay ENT, Cho Foot & Ankle Specialists, Aria Psychiatry, Department of Veterans Services, and First Colonial Psychotherapy Services.

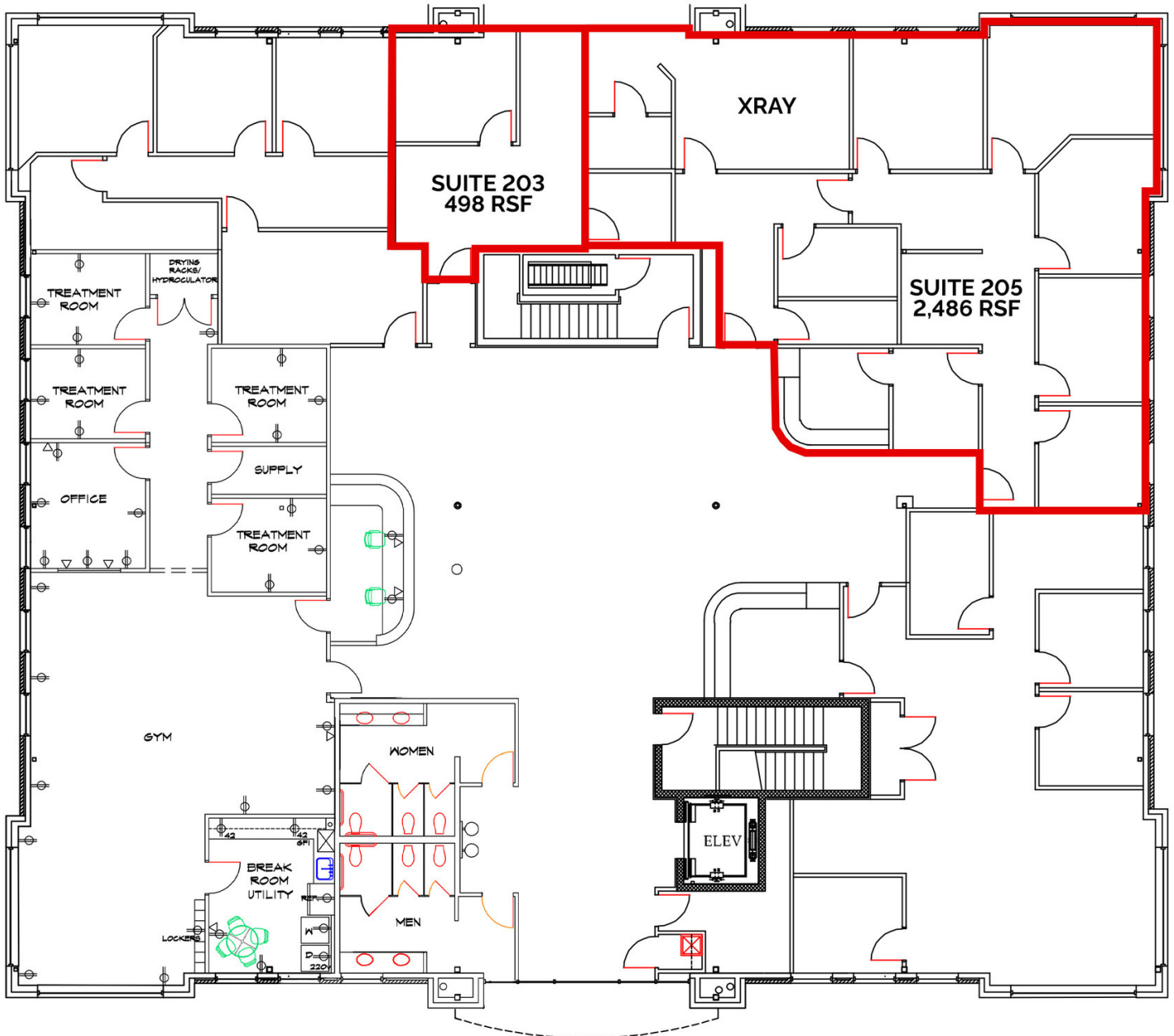
## PROPERTY HIGHLIGHTS

- Located in certified Opportunity Zone
- Building Conference Room
- Common Employee Break Room
- X-Ray Facilities on premises
- No clinical restrictions on procedures or services

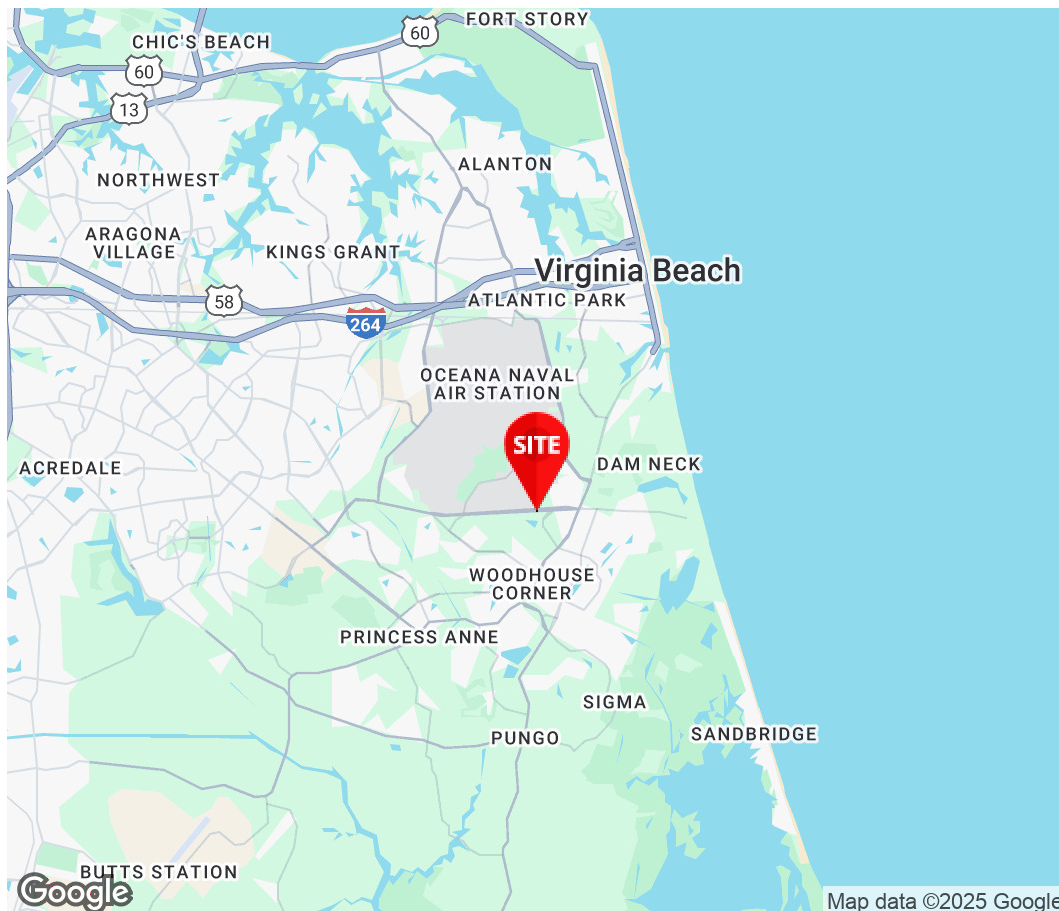
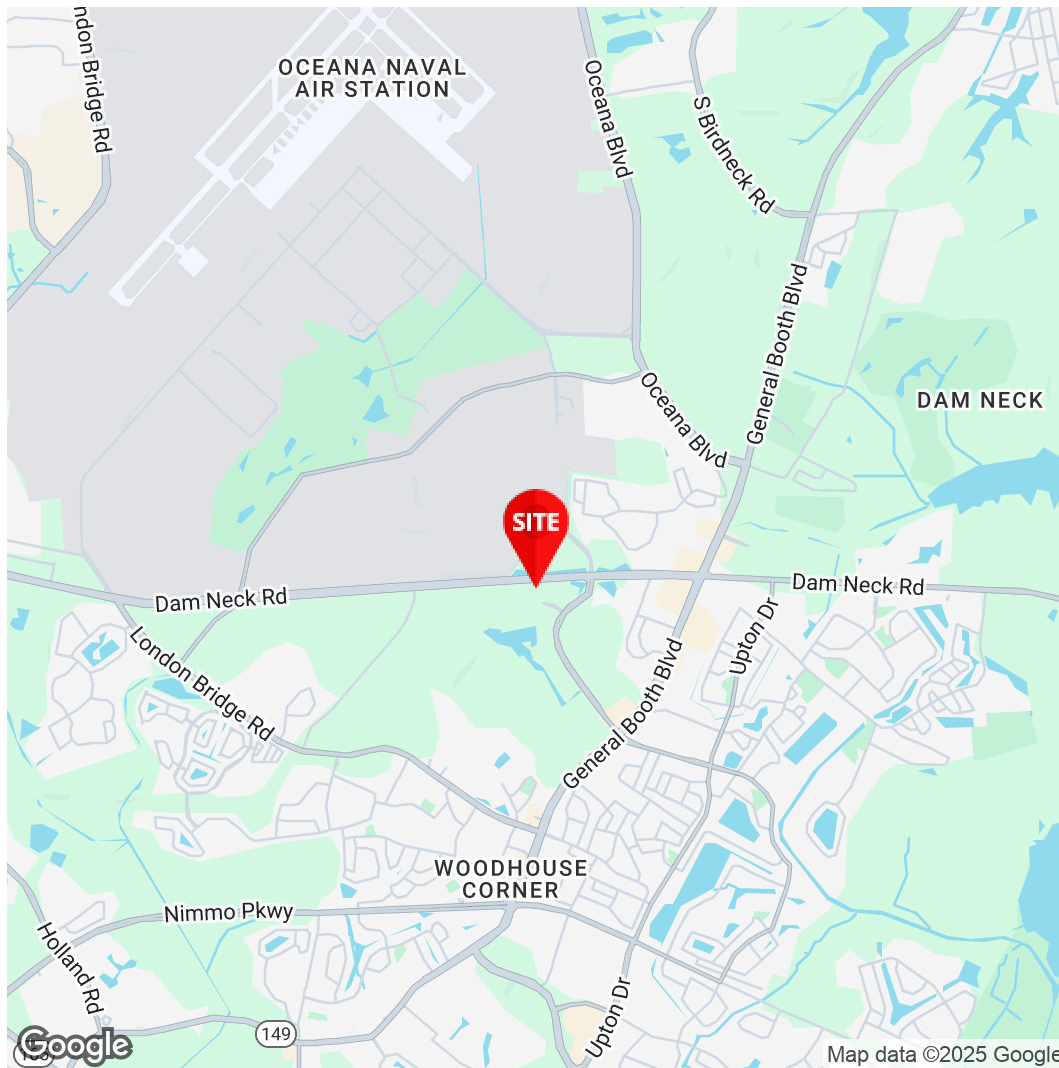
# CORPORATE LANDING MEDICAL CENTER

1232 PERIMETER PARKWAY, VIRGINIA BEACH, VA 23454

## AVAILABLE SUITES







**Krista Costa**

Executive Vice President

757.333.4356

Kcosta@Divaris.Com

The information contained herein should be considered confidential and remains the sole property of Divaris Real Estate, Inc. at all times. Although every effort has been made to ensure accuracy, no liability will be accepted for any errors or omissions. Disclosure of any information contained herein is prohibited except with the express written permission of Divaris Real Estate, Inc.