



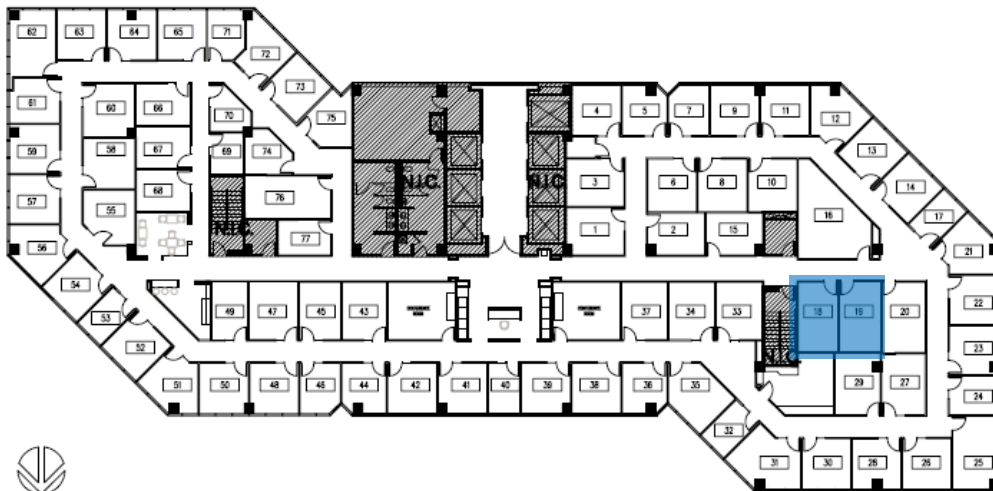
New space available.
Fully furnished,
turnkey solutions.



Regus Brentwood 12100 Wilshire Blvd., Suite 800, Los Angeles CA 90025

2 contiguous private suites, seats up to 8

New space available that is perfect for 8 people. Come see how you can get into a space that provides the professional image and amenities you need. Tour today for 2 months free



Space Available

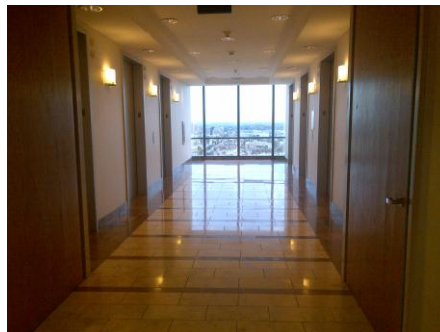
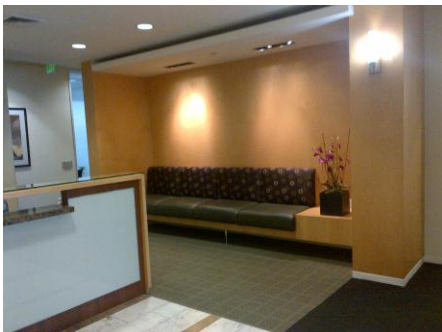
Great for 8 people.

Client receives 2 months free on 12 month agreement

Estimated commission \$7,540

Amenities Include

- Fully furnished Offices
- Receptionist and IT Support
- Professional Meeting Rooms
- Access to 1,200 global Business Lounges
- No up front capital expenditure
- Short or long term lease options



Tour today:
Erika Deras
818- 445-4076
Erika.Deras@regus.com

1-800-OFFICES regus.com

Terms and conditions apply. Offers subject to availability. Services available on an a la carte basis. Samples reflect current free rent promotion.

1200 locations | 550 cities | 95 countries