

MOUNT DIABLO TERRACE

3466, 3468 & 3470 Mount Diablo, Lafayette, CA



CURTIS BERRIEN 925.285.2000 CURTIS.BERRIEN@NMRK.COM CA RE LIC. #01210499
DANNY BARTZ 925.708.8188 DANNY.BARTZ@NMRK.COM CA RE LIC. #01971819

NEWMARK

The distributor of this communication is performing acts for which a real estate license is required. The information contained herein has been obtained from sources deemed reliable but has not been verified and no guarantee, warranty or representation, either express or implied, is made with respect to such information. Terms of sale or lease and availability are subject to change or withdrawal without notice. 181378 / 08.24

MOUNT DIABLO TERRACE

3466, 3468 & 3470 Mount Diablo, Lafayette, CA



CURRENT AVAILABILITY

BUILDING A 3470 MOUNT DIABLO

| | | | |
|-----------|-----------|-----------|-----------|
| SUITE 100 | 9,267 RSF | SUITE 210 | 1,795 RSF |
| SUITE 112 | 2,129 RSF | SUITE 215 | 4,859 RSF |
| SUITE 114 | 1,681 RSF | SUITE 220 | 2,894 RSF |
| SUITE 115 | 1,159 RSF | SUITE 310 | 1,542 RSF |
| SUITE 135 | 373 RSF | | |

BUILDING B 3468 MOUNT DIABLO

| | |
|-----------|-----------|
| SUITE 108 | 2,890 RSF |
| SUITE 110 | 6,112 RSF |
| SUITE 203 | 1,767 RSF |

BUILDING C 3466 MOUNT DIABLO

| | |
|-----------|-----------|
| SUITE 100 | 2,661 RSF |
| SUITE 104 | 6,174 RSF |
| SUITE 205 | 1,304 RSF |

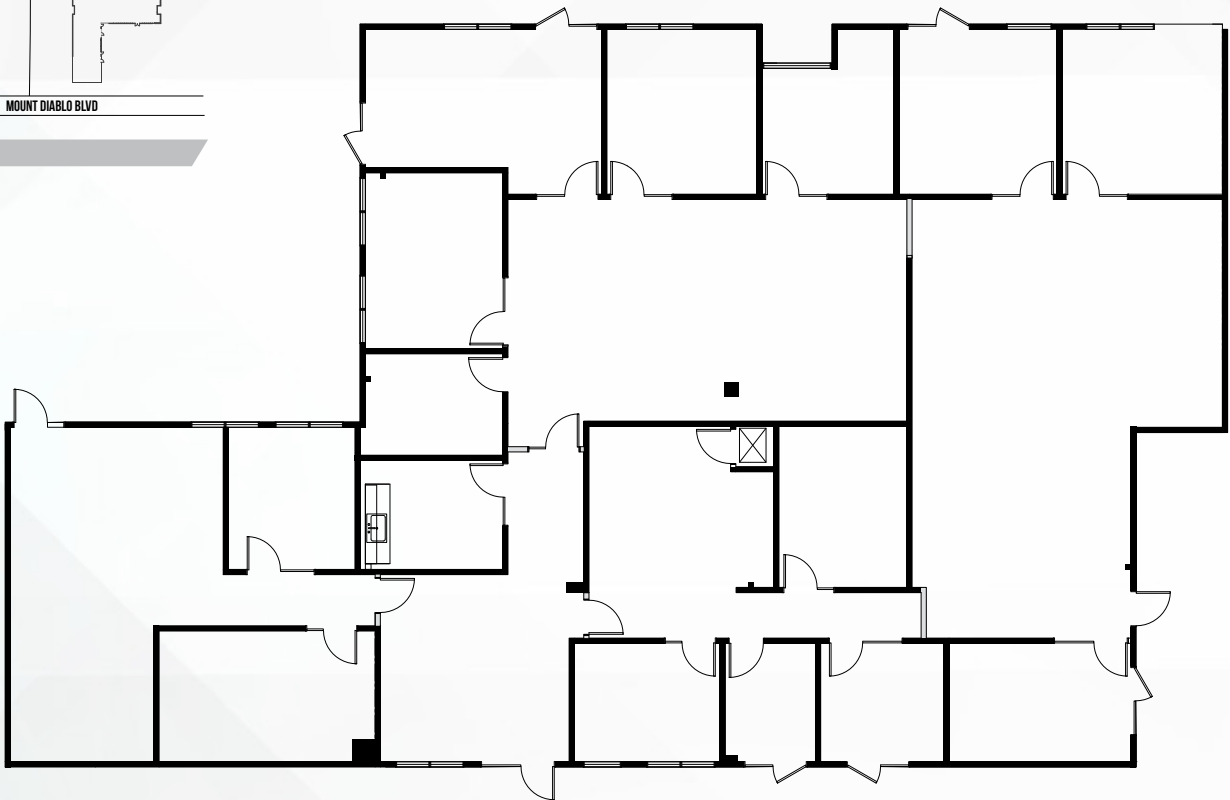
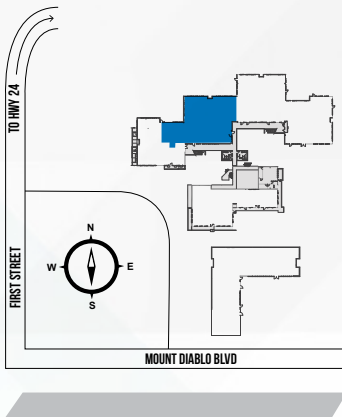
CURTIS BERRIEN 925.285.2000 CURTIS.BERRIEN@NMRK.COM CA RE LIC. #01210499
DANNY BARTZ 925.708.8188 DANNY.BARTZ@NMRK.COM CA RE LIC. #01971819

NEWMARK

The distributor of this communication is performing acts for which a real estate license is required. The information contained herein has been obtained from sources deemed reliable but has not been verified and no guarantee, warranty or representation, either express or implied, is made with respect to such information. Terms of sale or lease and availability are subject to change or withdrawal without notice. 181378 / 08.24

BLDG A - 3470 MOUNT DIABLO BLVD

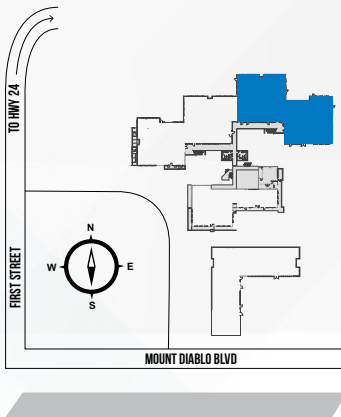
SUITE 110 | ±6,487 RSF



CURTIS BERRIEN 925.285.2000 CURTIS.BERRIEN@NMRK.COM CA RE LIC. #01210499
DANNY BARTZ 925.708.8188 DANNY.BARTZ@NMRK.COM CA RE LIC. #01971819

BLDG A - 3470 MOUNT DIABLO BLVD

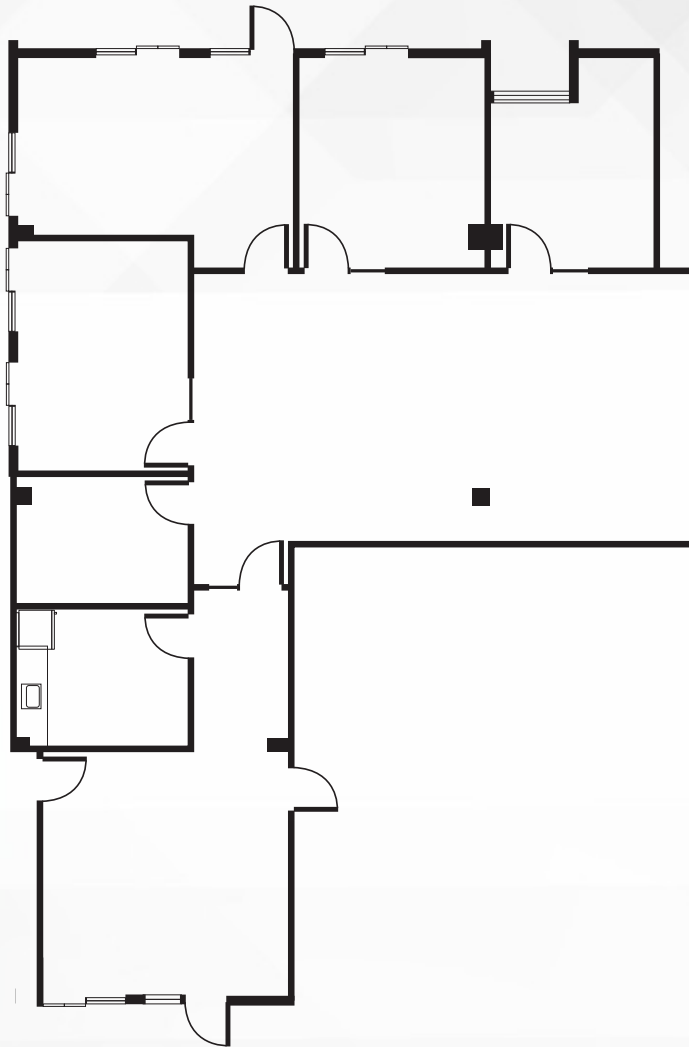
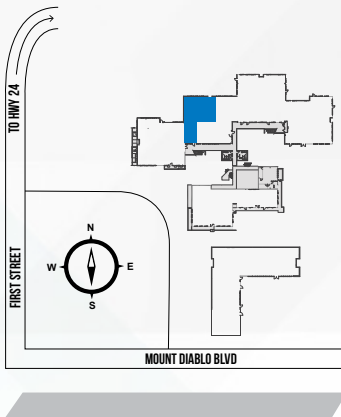
SUITE 100 | ±9,267 RSF



CURTIS BERRIEN 925.285.2000 CURTIS.BERRIEN@NMRK.COM CA RE LIC. #01210499
DANNY BARTZ 925.708.8188 DANNY.BARTZ@NMRK.COM CA RE LIC. #01971819

BLDG A - 3470 MOUNT DIABLO BLVD

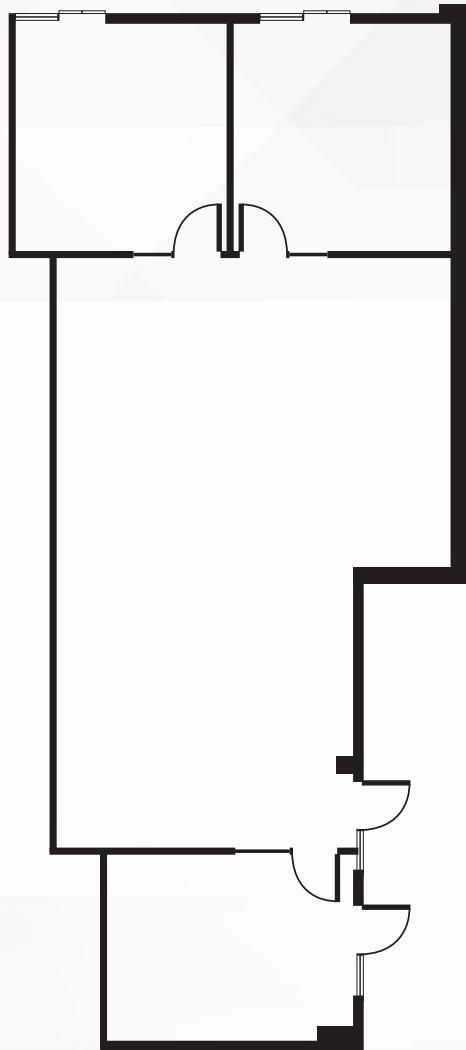
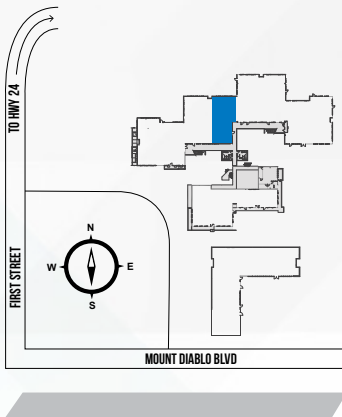
SUITE 112 | ±2,129 RSF



CURTIS BERRIEN 925.285.2000 CURTIS.BERRIEN@NMRK.COM CA RE LIC. #01210499
DANNY BARTZ 925.708.8188 DANNY.BARTZ@NMRK.COM CA RE LIC. #01971819

BLDG A - 3470 MOUNT DIABLO BLVD

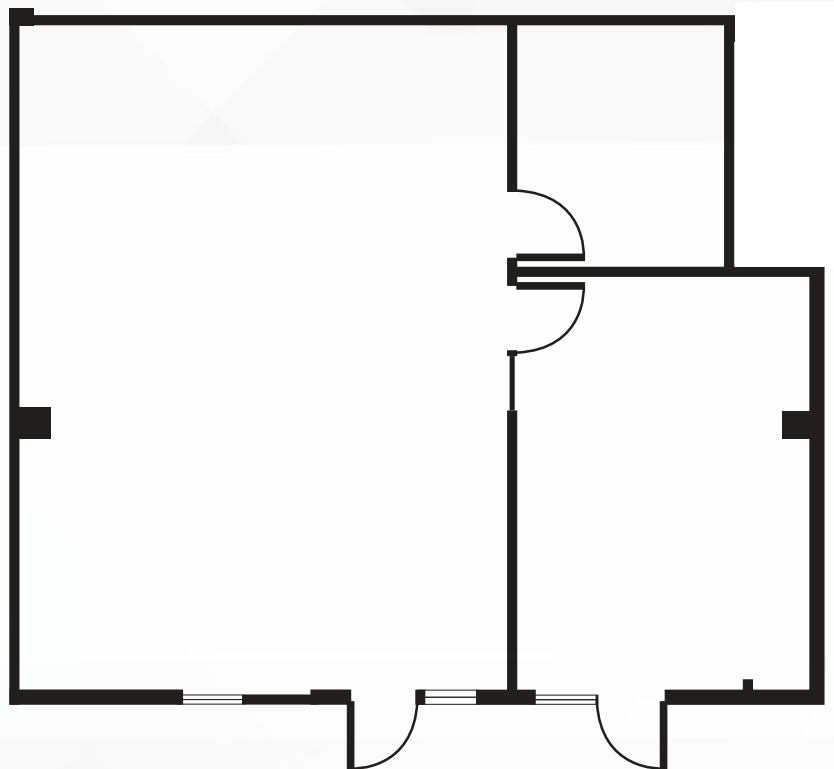
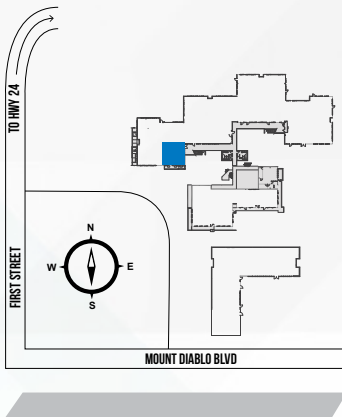
SUITE 114 | ±1,681 RSF



CURTIS BERRIEN 925.285.2000 CURTIS.BERRIEN@NMRK.COM CA RE LIC. #01210499
DANNY BARTZ 925.708.8188 DANNY.BARTZ@NMRK.COM CA RE LIC. #01971819

BLDG A - 3470 MOUNT DIABLO BLVD

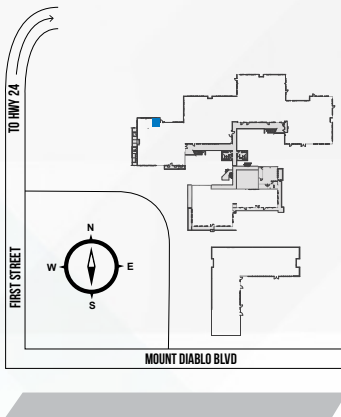
SUITE 115 | ±1,159 RSF



CURTIS BERRIEN 925.285.2000 CURTIS.BERRIEN@NMRK.COM CA RE LIC. #01210499
DANNY BARTZ 925.708.8188 DANNY.BARTZ@NMRK.COM CA RE LIC. #01971819

BLDG A - 3468 MOUNT DIABLO BLVD

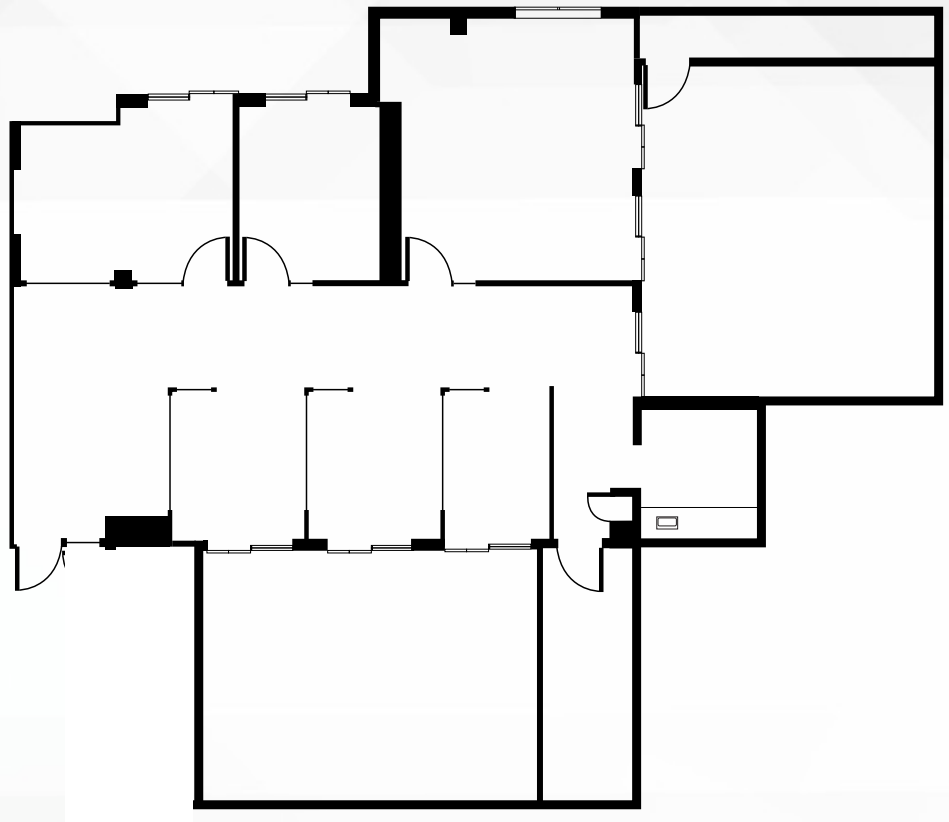
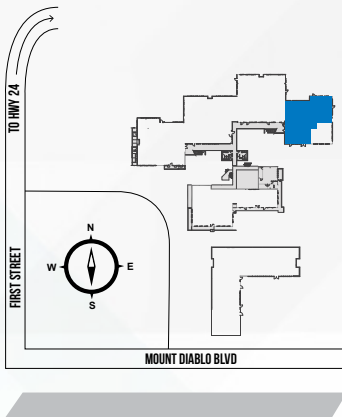
SUITE 135 | ±373 RSF



CURTIS BERRIEN 925.285.2000 CURTIS.BERRIEN@NMRK.COM CA RE LIC. #01210499
DANNY BARTZ 925.708.8188 DANNY.BARTZ@NMRK.COM CA RE LIC. #01971819

BLDG A - 3470 MOUNT DIABLO BLVD

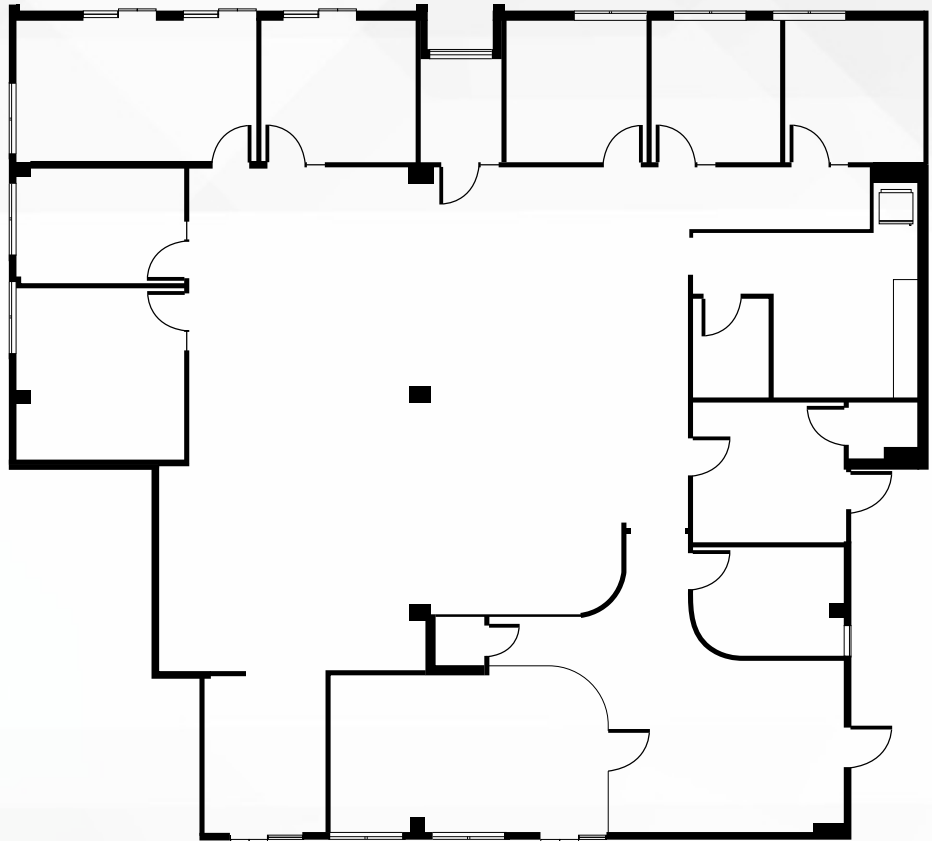
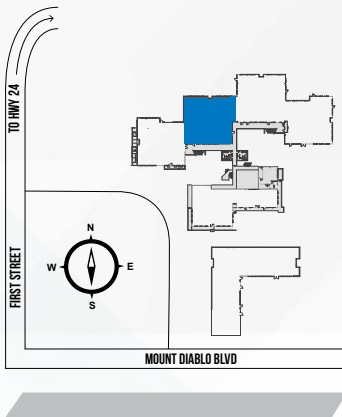
SUITE 210 | ±1,795 RSF



CURTIS BERRIEN 925.285.2000 CURTIS.BERRIEN@NMRK.COM CA RE LIC. #01210499
DANNY BARTZ 925.708.8188 DANNY.BARTZ@NMRK.COM CA RE LIC. #01971819

BLDG A - 3470 MOUNT DIABLO BLVD

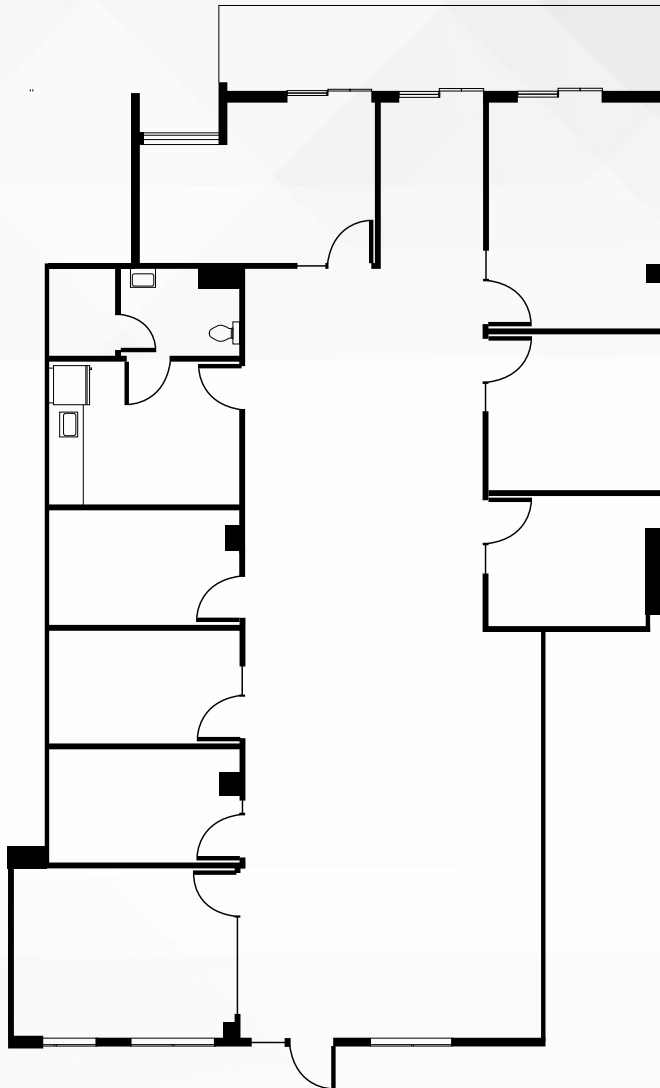
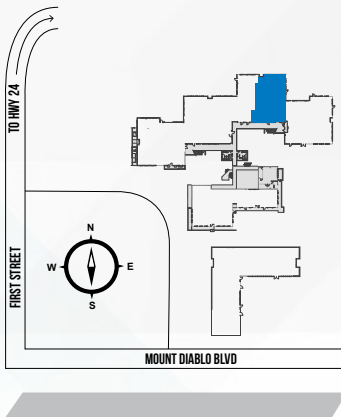
SUITE 215 | ±4,859 RSF



CURTIS BERRIEN 925.285.2000 CURTIS.BERRIEN@NMRK.COM CA RE LIC. #01210499
DANNY BARTZ 925.708.8188 DANNY.BARTZ@NMRK.COM CA RE LIC. #01971819

BLDG A - 3470 MOUNT DIABLO BLVD

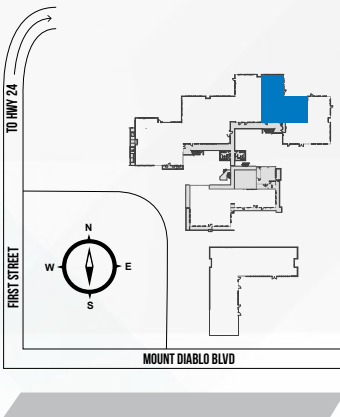
SUITE 220 | ±2,894 RSF



CURTIS BERRIEN 925.285.2000 CURTIS.BERRIEN@NMRK.COM CA RE LIC. #01210499
DANNY BARTZ 925.708.8188 DANNY.BARTZ@NMRK.COM CA RE LIC. #01971819

BLDG A - 3470 MOUNT DIABLO BLVD

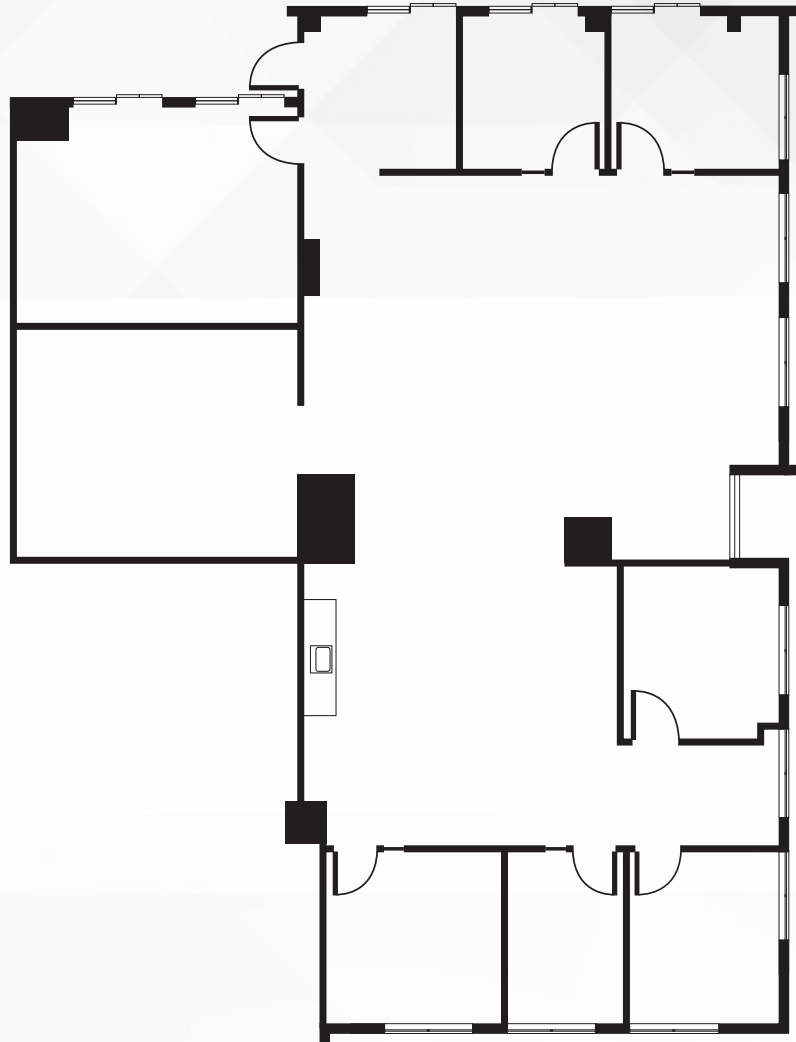
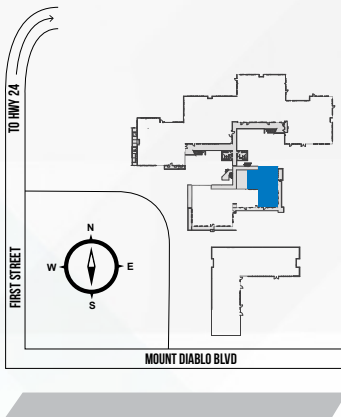
SUITE 310 | ±1,542 RSF



CURTIS BERRIEN 925.285.2000 CURTIS.BERRIEN@NMRK.COM CA RE LIC. #01210499
DANNY BARTZ 925.708.8188 DANNY.BARTZ@NMRK.COM CA RE LIC. #01971819

BLDG B - 3468 MOUNT DIABLO BLVD

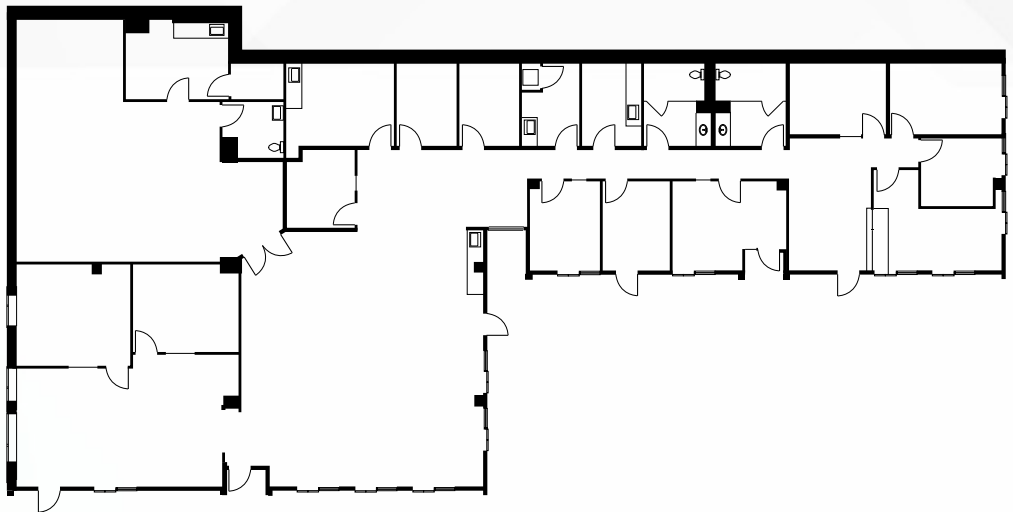
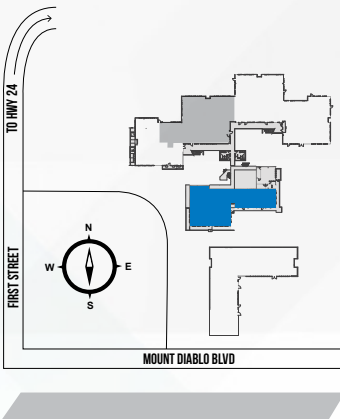
SUITE 108 | ±2,890 RSF



CURTIS BERRIEN 925.285.2000 CURTIS.BERRIEN@NMRK.COM CA RE LIC. #01210499
DANNY BARTZ 925.708.8188 DANNY.BARTZ@NMRK.COM CA RE LIC. #01971819

BLDG B - 3468 MOUNT DIABLO BLVD

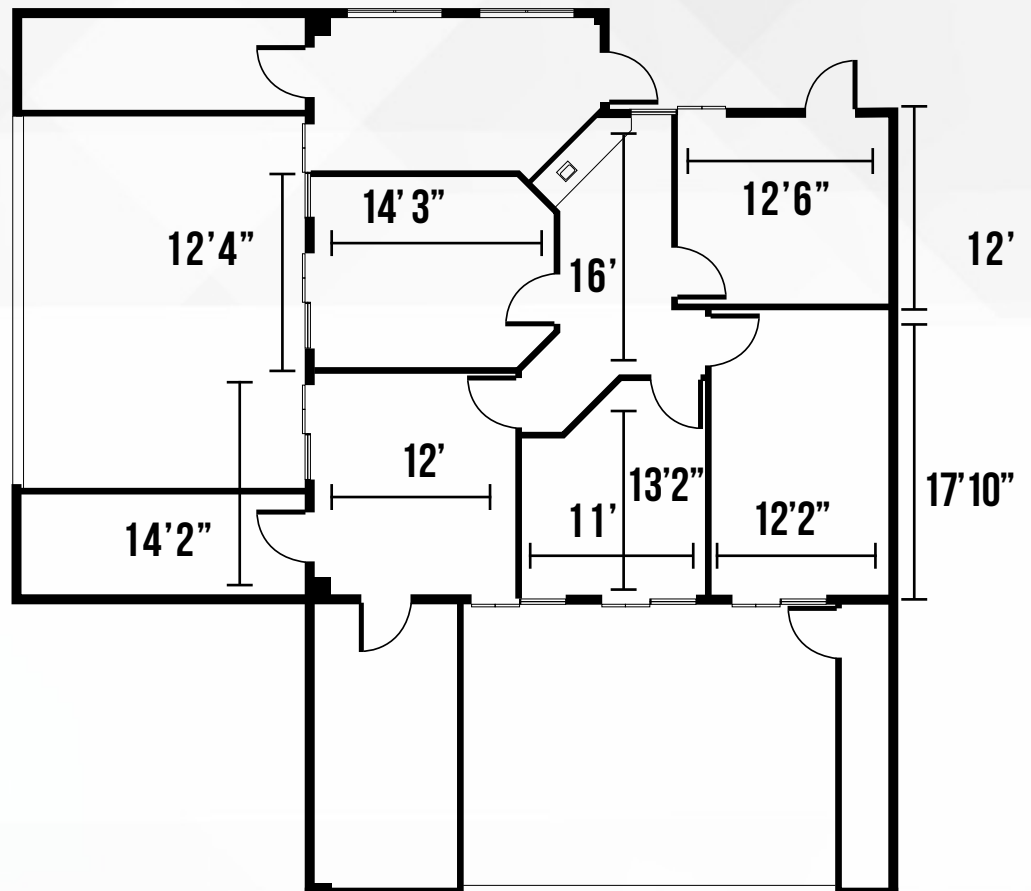
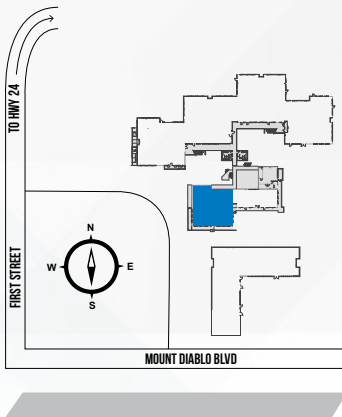
SUITE 110 | ±6,112 RSF



CURTIS BERRIEN 925.285.2000 CURTIS.BERRIEN@NMRK.COM CA RE LIC. #01210499
DANNY BARTZ 925.708.8188 DANNY.BARTZ@NMRK.COM CA RE LIC. #01971819

BLDG B - 3468 MOUNT DIABLO BLVD

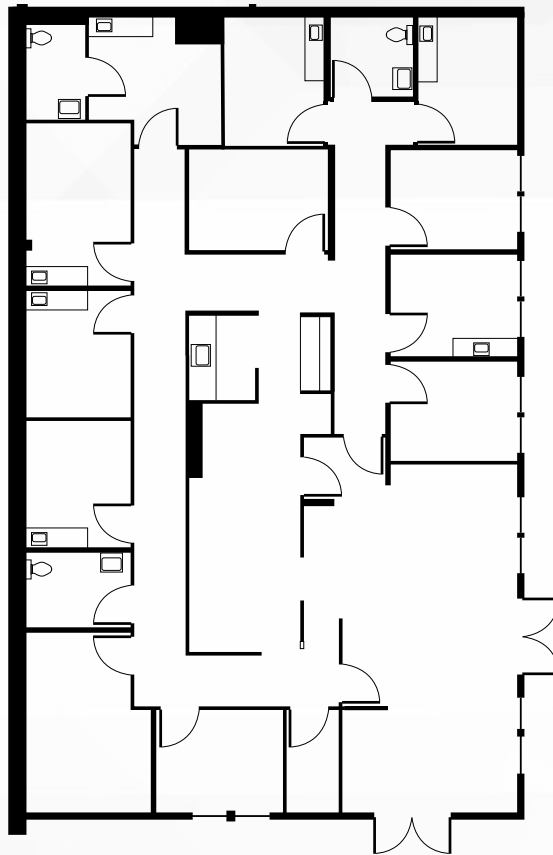
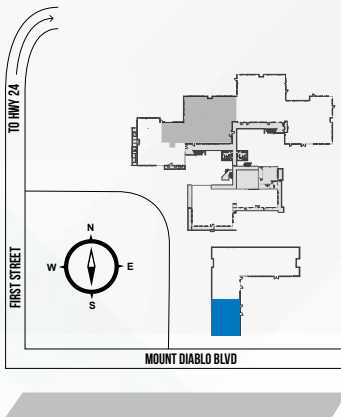
SUITE 203 | ±1,767 RSF



CURTIS BERRIEN 925.285.2000 CURTIS.BERRIEN@NMRK.COM CA RE LIC. #01210499
DANNY BARTZ 925.708.8188 DANNY.BARTZ@NMRK.COM CA RE LIC. #01971819

BLDG C - 3466 MOUNT DIABLO BLVD

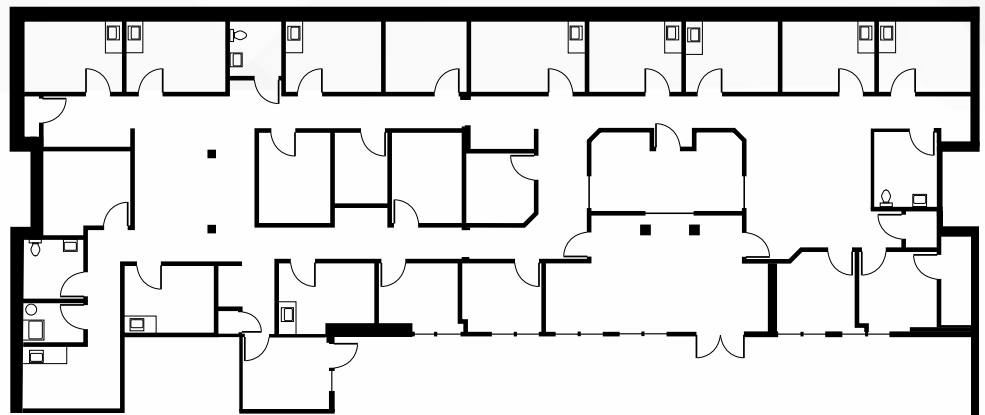
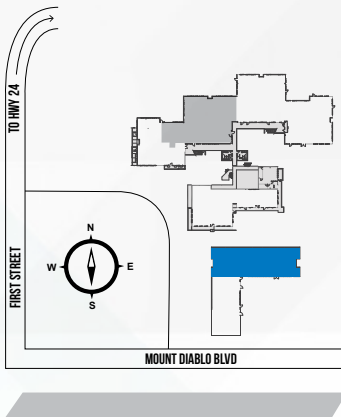
SUITE 100 | ±2,661 RSF



CURTIS BERRIEN 925.285.2000 CURTIS.BERRIEN@NMRK.COM CA RE LIC. #01210499
DANNY BARTZ 925.708.8188 DANNY.BARTZ@NMRK.COM CA RE LIC. #01971819

BLDG C - 3466 MOUNT DIABLO BLVD

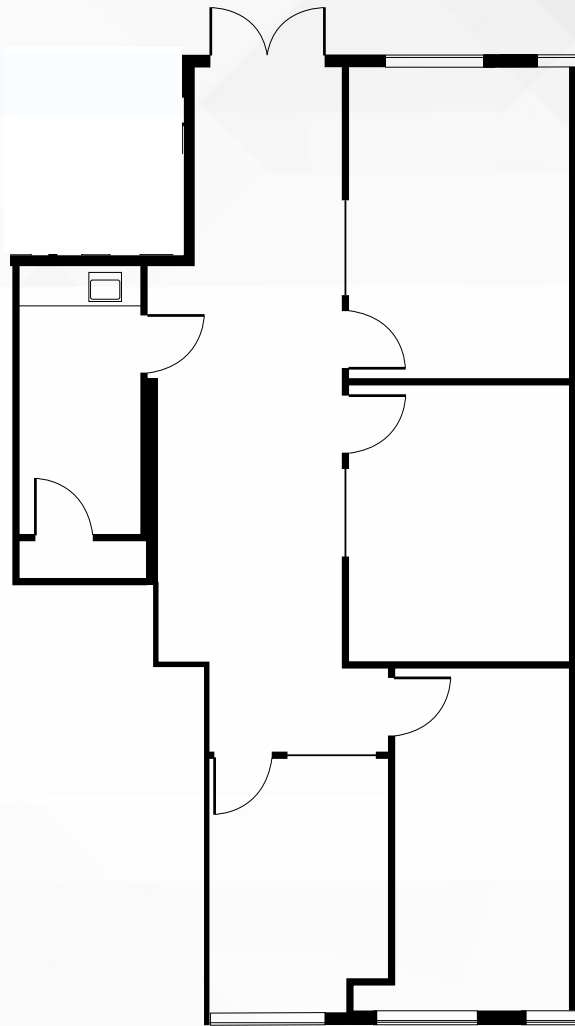
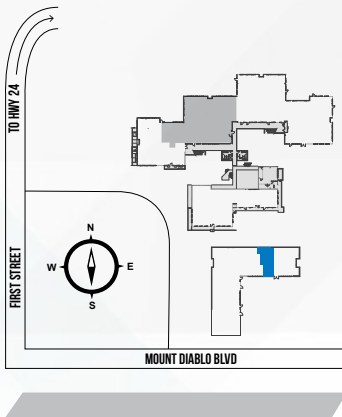
SUITE 104 | ±6,174 RSF



CURTIS BERRIEN 925.285.2000 CURTIS.BERRIEN@NMRK.COM CA RE LIC. #01210499
DANNY BARTZ 925.708.8188 DANNY.BARTZ@NMRK.COM CA RE LIC. #01971819

BLDG C - 3466 MOUNT DIABLO BLVD

SUITE 205 | ±1,304 RSF



CURTIS BERRIEN 925.285.2000 CURTIS.BERRIEN@NMRK.COM CA RE LIC. #01210499
DANNY BARTZ 925.708.8188 DANNY.BARTZ@NMRK.COM CA RE LIC. #01971819