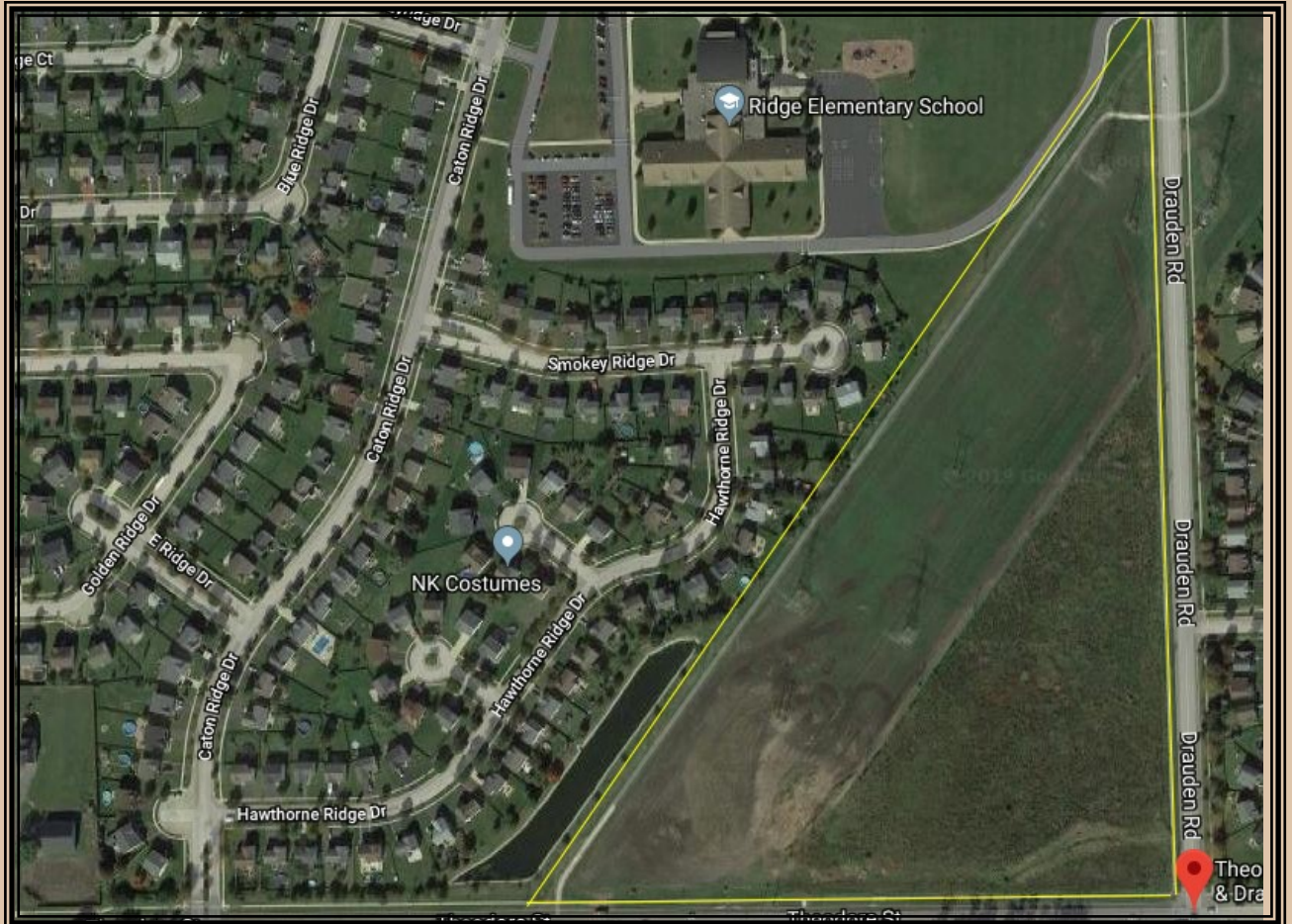


**PAD READY LOTS FOR SALE**

# Drauden Road and Theodore Street Joliet, IL 60586

From \$10 per Square Foot Pad Ready



- 1 to 4 Acre Sites from \$10/Sf. Pad Ready
- 11 Acres— \$975,000
- Centrally located from Caton Farm Road and Route 59
- Potential Uses Include: Retail, Office, Gas Station, Daycare Center or Multifamily Homes

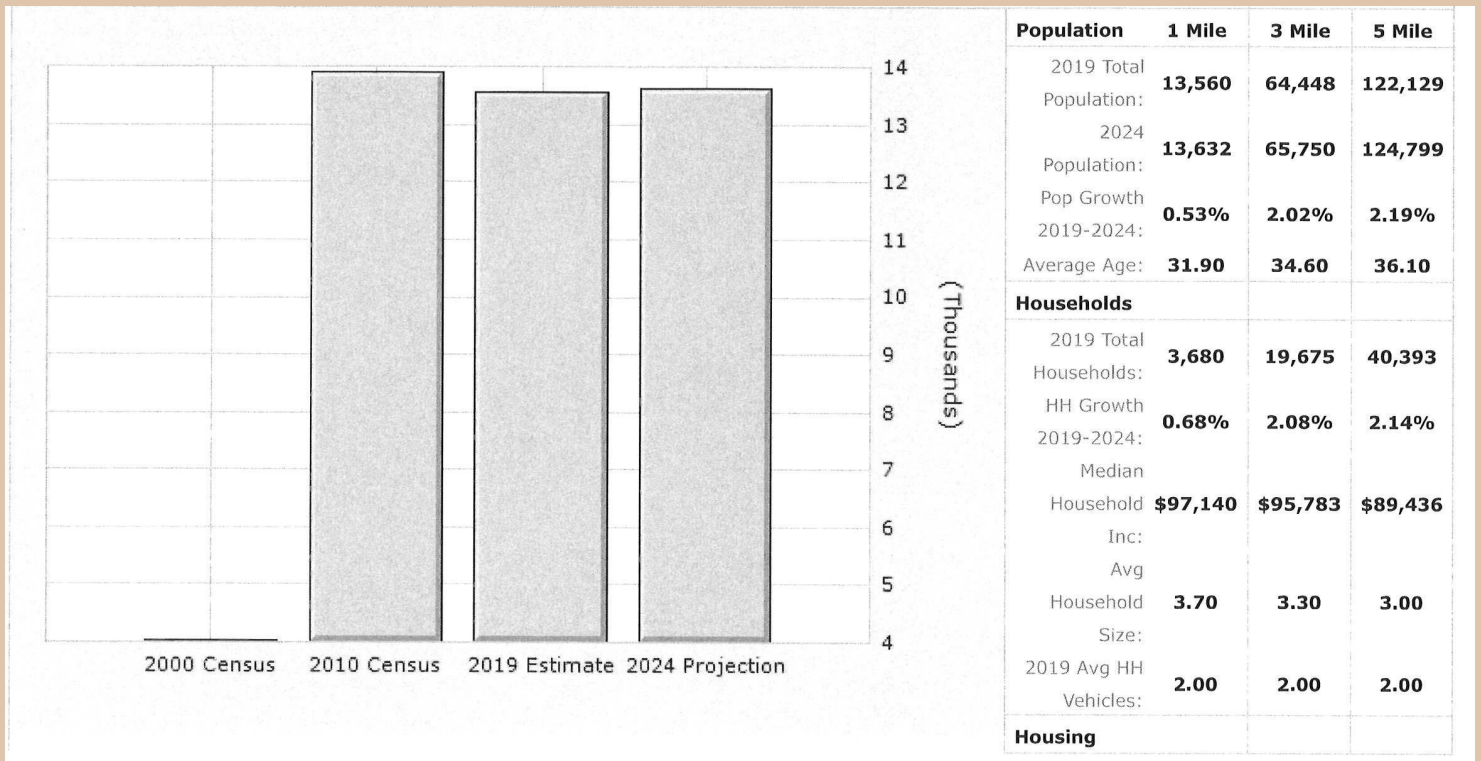


Presented by  
Mark Batinick, Broker  
RE/MAX Professionals Select

# Pad Ready Lots for Sale

Drauden Road and Theodore Street  
Joliet, IL 60586

From \$10 per Square Foot Pad Ready



- High Traffic Corners: Drauden 6,600 & Theodore 13,500
- Hard Corner
- High Median Household Income
- Dense Population



Presented by  
Mark Batinick, Broker  
RE/MAX Professionals Select  
isellcommercial@gmail.com  
630.514.0180