

# HAYWARD COMMERCE PARK

**FOR LEASE**



**NEWMARK**

**Steve Kapp, SIOR**  
Executive Managing Director  
M 510-543-7822  
steve.kapp@nmrk.com  
LIC.#01069911

**Dan Dowd, SIOR**  
Senior Managing Director  
M 925-808-8199  
dan.dowd@nmrk.com  
LIC.#01432679

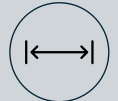


# HAYWARD COMMERCE PARK

## PROPERTY HIGHLIGHTS



6 building warehouse project  
in prime Hayward location



Unit sizes ranging  
from 4,000 SF - 50,000 SF



Dock and grade  
level loading



Upgraded interiors



Easy access to Highway 92 and  
Interstate 880



Quality Institutional  
Long term owner

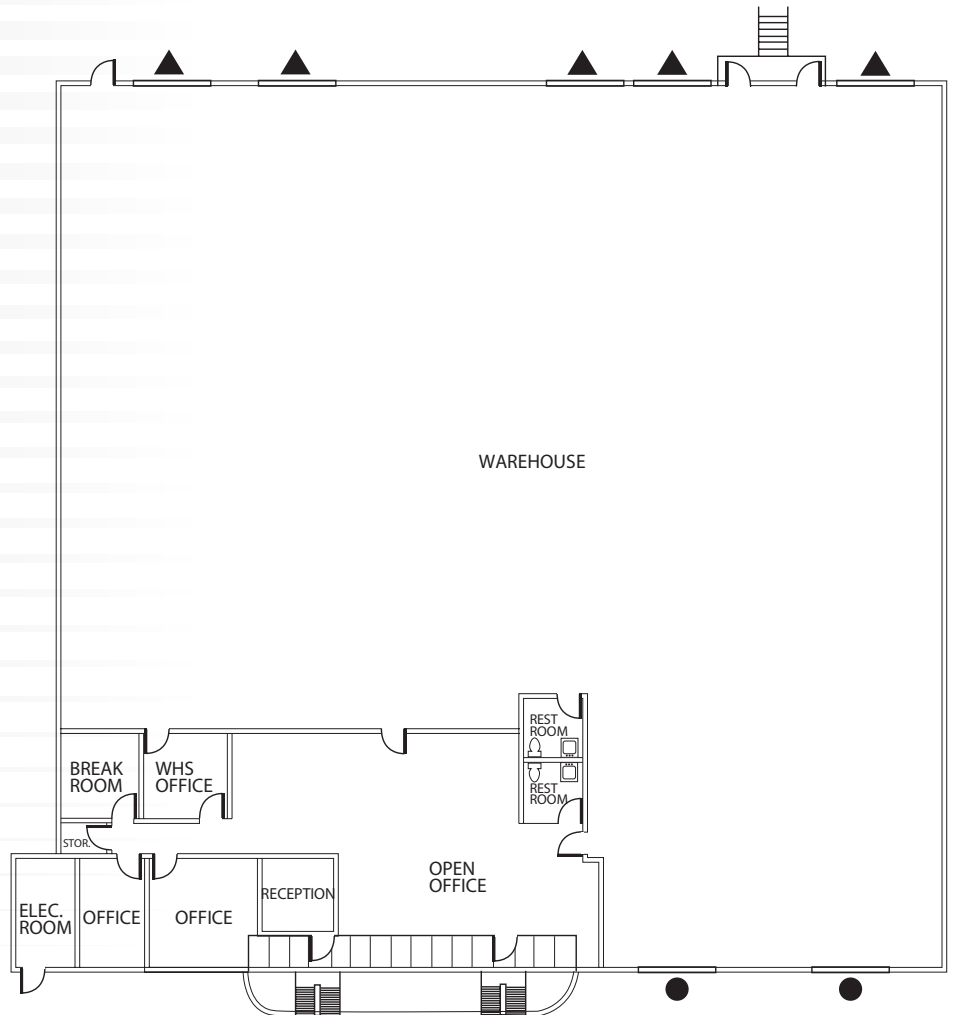


# HAYWARD COMMERCE PARK

2227 COMMERCE PLACE

## FEATURES

- ±14,509 SF
- ±2,000 SF of Office
- 5 Dock Doors
- 2 Drive in Doors
- \$1.35/SF NNN
- Available Now



For more information please contact:

**Steve Kapp, SIOR**  
Executive Managing Director  
M 510-543-7822  
steve.kapp@nmrk.com  
LIC.#01069911

**Dan Dowd, SIOR**  
Senior Managing Director  
M 925-808-8199  
dan.dowd@nmrk.com  
LIC.#01432679

# NEWMARK

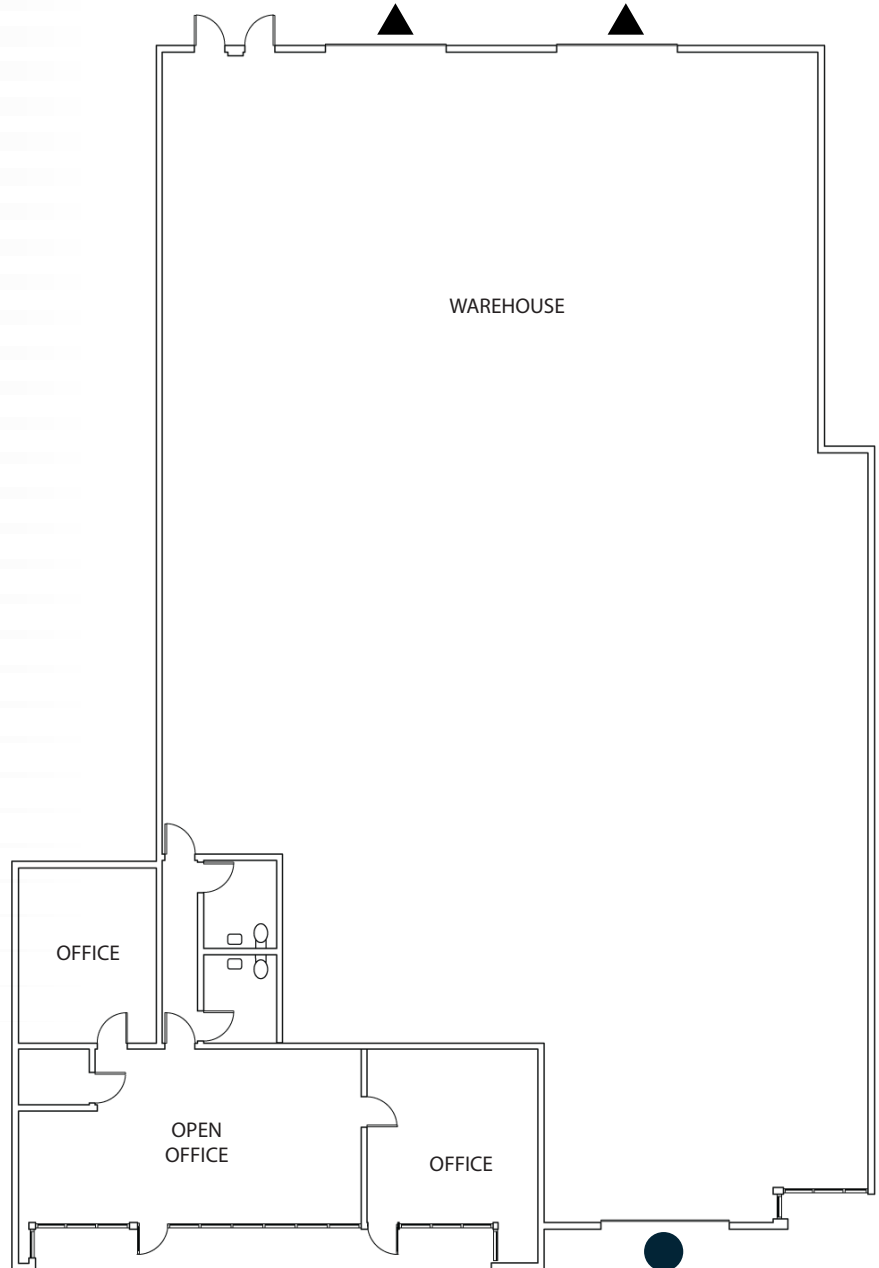
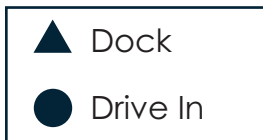
The distributor of this communication is performing acts for which a real estate license is required. The information contained herein has been obtained from sources deemed reliable but has not been verified and no guarantee, warranty or representation, either express or implied, is made with respect to such information. Terms of sale or lease and availability are subject to change or withdrawal without notice.  
MP-173 January 9, 2025 9:03 AM

# HAYWARD COMMERCE PARK

2149 COMMERCE PLACE

## FEATURES

- ±8,860 SF
- ±1,200 SF Office
- 2 Dock Doors
- 1 Drive in Door
- \$1.35 NNN
- Available Now



For more information please contact:

**Steve Kapp, SIOR**  
Executive Managing Director  
M 510-543-7822  
steve.kapp@nmrk.com  
LIC.#01069911

**Dan Dowd, SIOR**  
Senior Managing Director  
M 925-808-8199  
dan.dowd@nmrk.com  
LIC.#01432679

# NEWMARK

The distributor of this communication is performing acts for which a real estate license is required. The information contained herein has been obtained from sources deemed reliable but has not been verified and no guarantee, warranty or representation, either express or implied, is made with respect to such information. Terms of sale or lease and availability are subject to change or withdrawal without notice.  
MP-173 January 9, 2025 9:03 AM

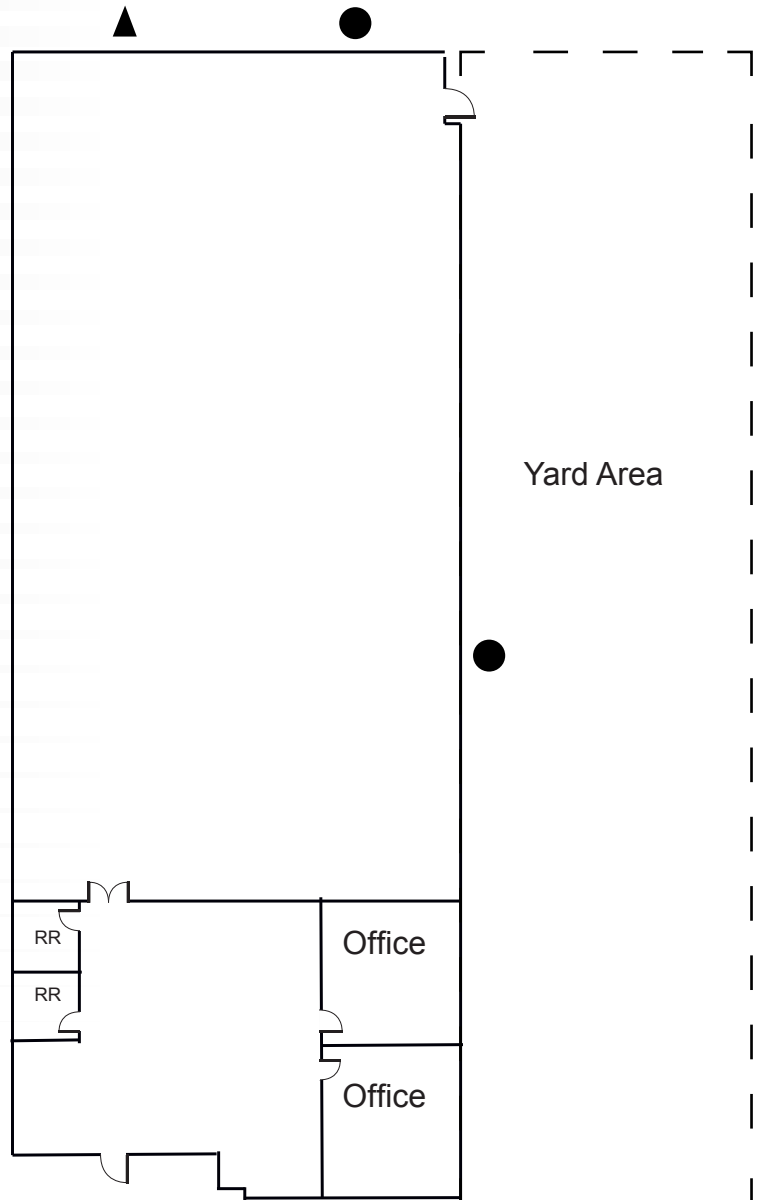
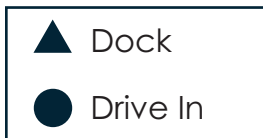


# HAYWARD COMMERCE PARK

24201 CLAWITER ROAD

## FEATURES

- $\pm 4,206$  SF
- $\pm 1,000$  SF Office
- One (1) Dock Door
- 2 Drive-In Doors
- Clawiter Road Frontage
- Price \$1.55 PSF NNN
- $\pm 2,000$  SF Fenced Yard
- Available Now



For more information please contact:

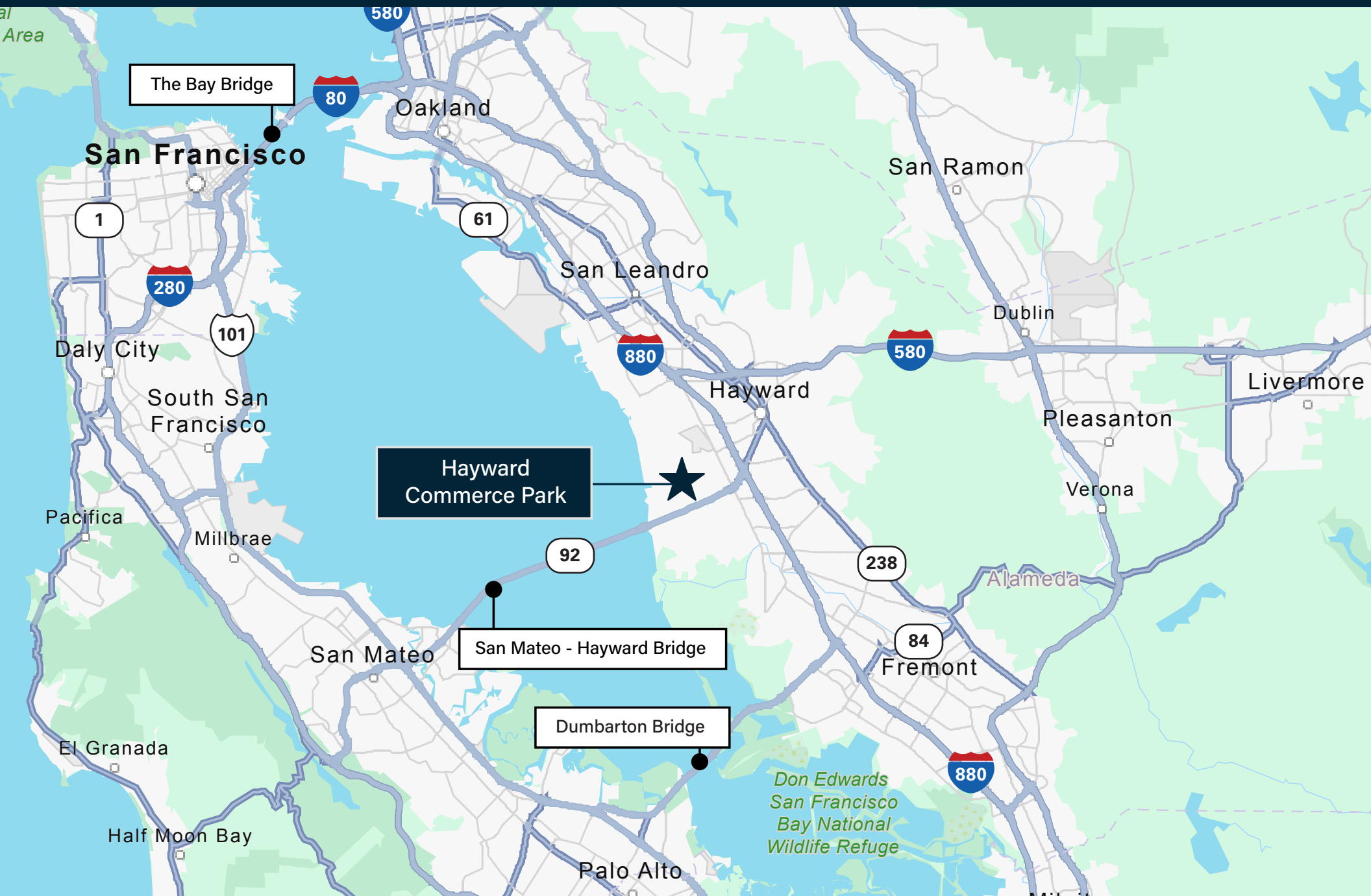
**Steve Kapp, SIOR**  
Executive Managing Director  
M 510-543-7822  
steve.kapp@nmrk.com  
LIC.#01069911

**Dan Dowd, SIOR**  
Senior Managing Director  
M 925-808-8199  
dan.dowd@nmrk.com  
LIC.#01432679

# NEWMARK

The distributor of this communication is performing acts for which a real estate license is required. The information contained herein has been obtained from sources deemed reliable but has not been verified and no guarantee, warranty or representation, either express or implied, is made with respect to such information. Terms of sale or lease and availability are subject to change or withdrawal without notice. 7877765693

# LOCATION - MAP



# AMENITIES AND CORPORATE USER - MAP

