

406 TURNPIKE STREET

Year Built: 1998

Zoned: BUS

Bldg. Approx. 5,000 sqft

Approx. .98 acre(s)

ADA Accessible

Highway Access

Town - Water

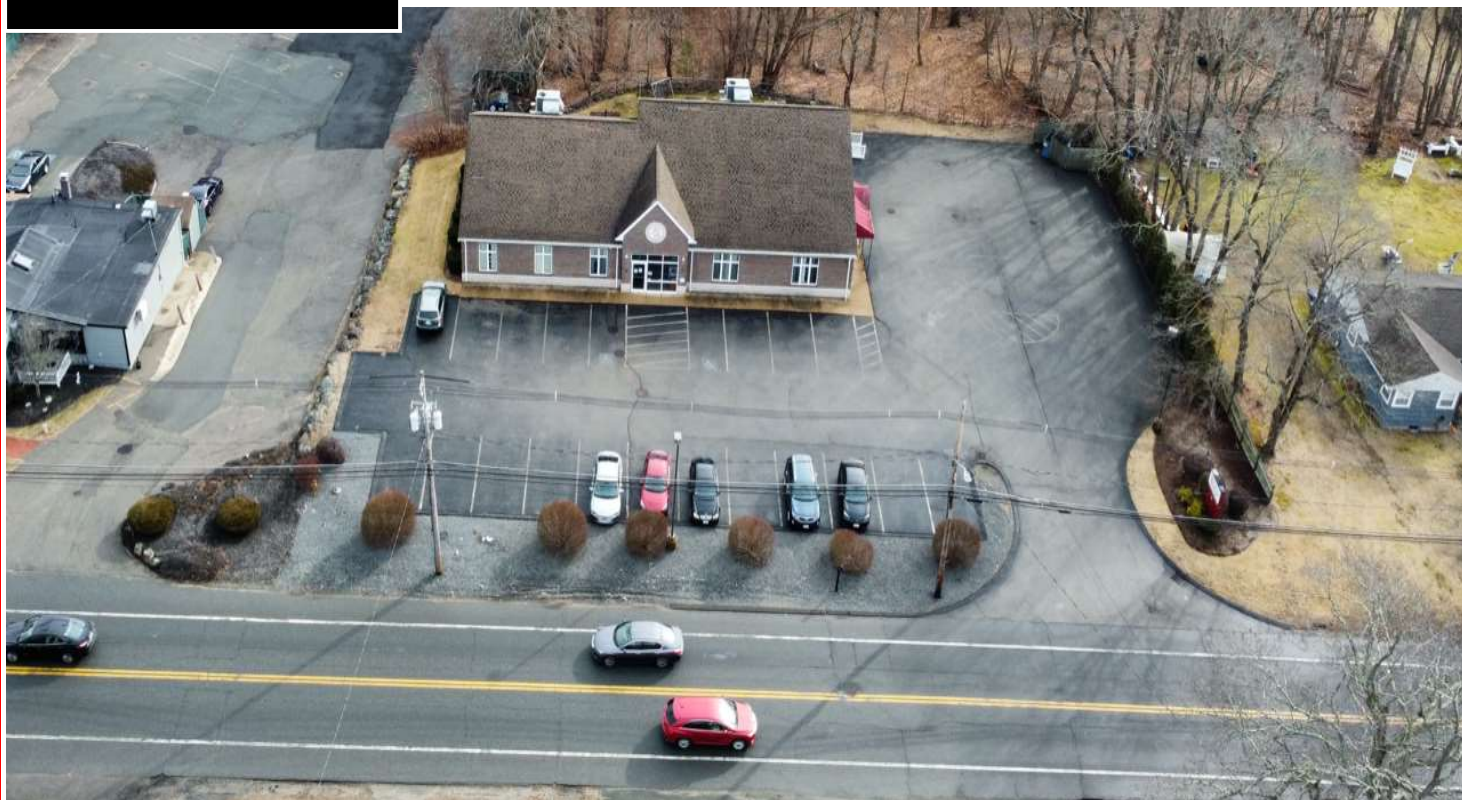
Natural Gas Service

Sewer- Private Septic

DROUKAS

REAL ESTATE

***PROFESSIONAL OFFICE BUILDING
FOR LEASE***



406 Turnpike Street South Easton, Massachusetts

Prime Commercial office space available in this professional office building on Route 138 in South Easton, Massachusetts. High visibility on Route 138 with pylon signage. Quick access to Route 24 and Interstate 495. ADA accessible - Potential uses; Medical / Professional Office / Attorney / CPA

Offering Summary

Lease Rate: \$18.00 NNN

Available Sqft = 5,000

3/5 Term Minimum

**Space available July 2023*

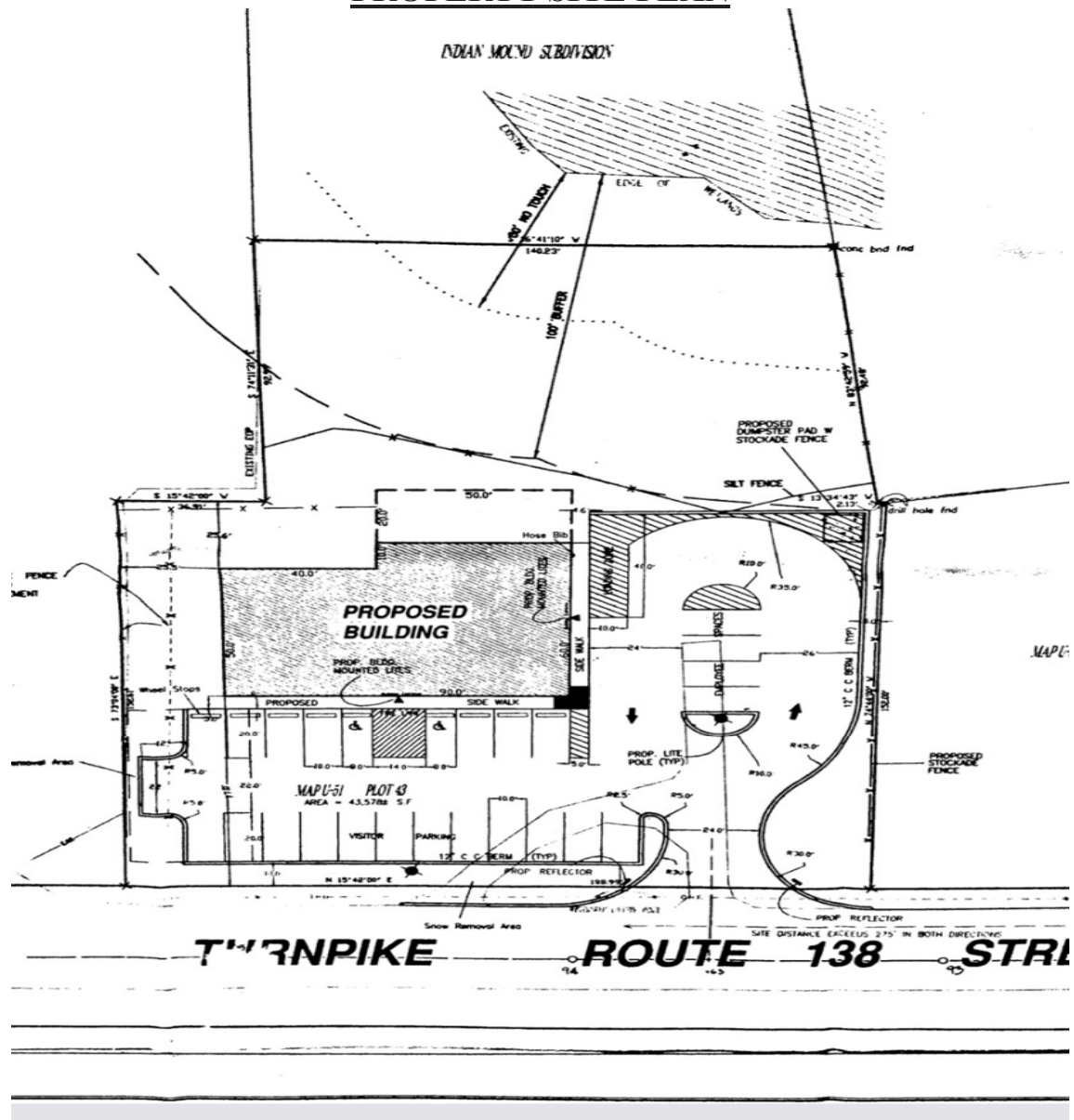
Please call to arrange a private viewing Brian Droukas, Broker **508-458-5000**

www.droukasrealestate.com

DROUKAS

REAL ESTATE

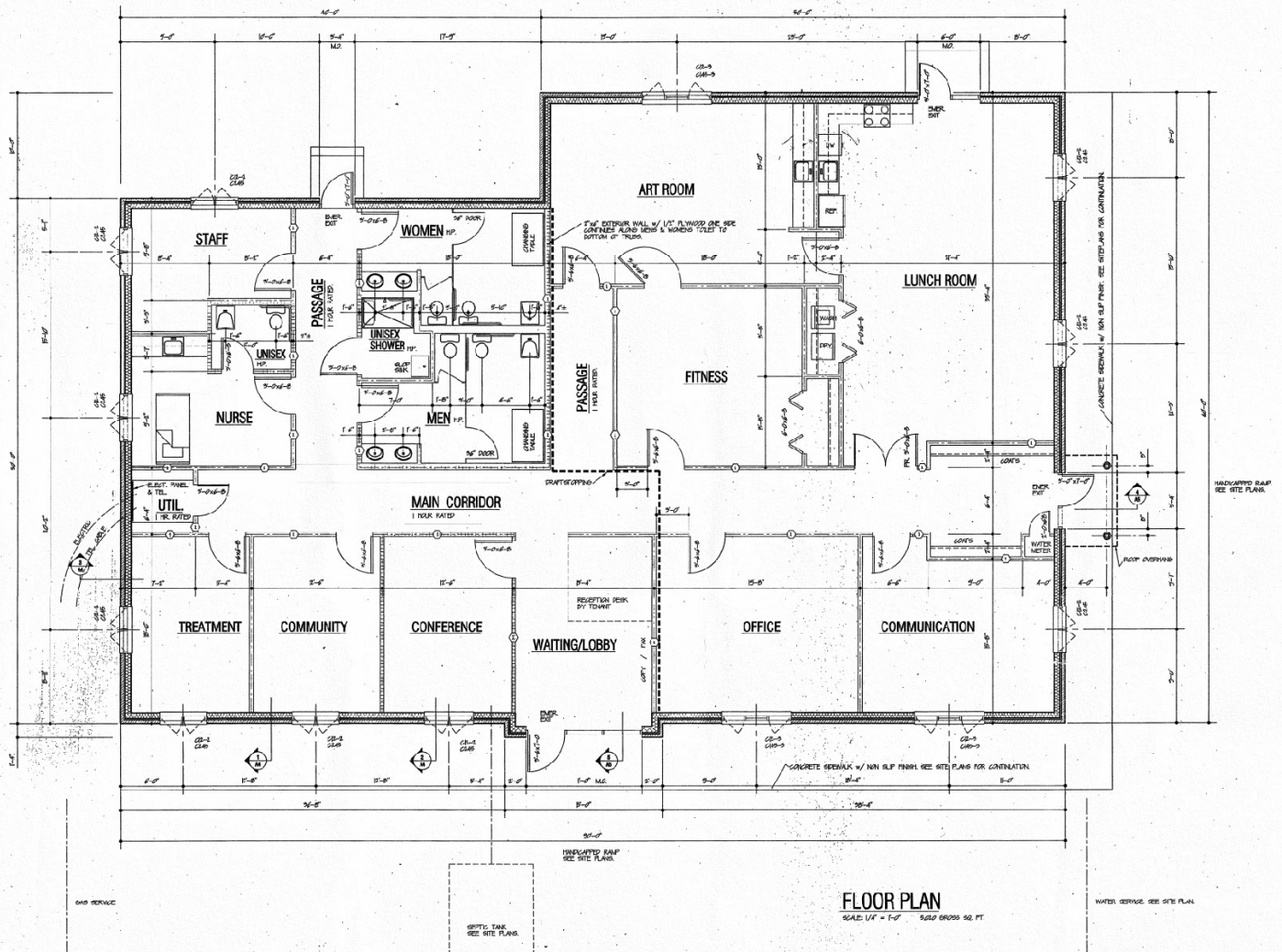
PROPERTY SITE PLAN



Please call to arrange a private viewing Brian Droukas, Broker 508-458-5000

www.droukasrealestate.com

BUILDING FLOOR PLAN





Please call to arrange a private viewing Brian Droukas, Broker **508-458-5000**

www.droukasrealestate.com