



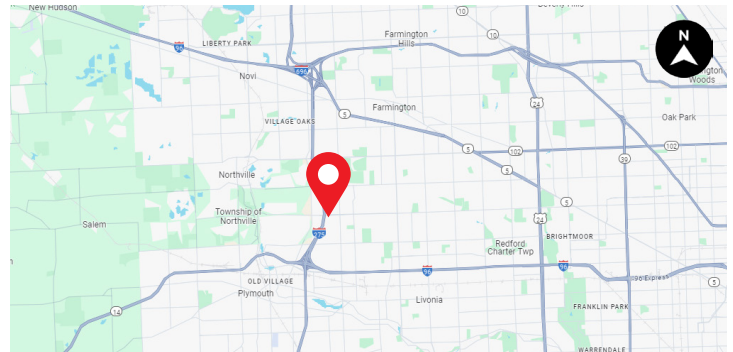
LAUREL OFFICE PARK I - SUITE 233

17177 LAUREL PARK DRIVE

LIVONIA, MI 48152

PROPERTY HIGHLIGHTS

- **Prime Office Space:** ±15,581 RSF newly built-out suite
- **Location:** Located in the prestigious Laurel Office Park I, Livonia, MI
- **Modern Amenities:**
 - Spacious and modern fully equipped kitchen
 - High quality audio and visual conference/board room equipment
- **Private Offices:** 14 individual offices for focused work
- **Meeting Areas:**
 - Two small conference/meeting rooms
 - Two large board rooms
- **Open Layout:** Expansive open space ideal for collaborative work environments
- **Fully Furnished:** Ready for immediate occupancy
- **Building Amenities:**
 - On-site café serving breakfast and lunch
 - 50-person conference room amenity
 - Interior atrium seating for relaxation and informal meetings
- **Enhanced Productivity:** Designed to meet the needs of modern businesses
- **Convenient Access:** Easy access to major highways and local amenities
- **Professional Environment:** Situated in a well-maintained and prestigious office park



FOR MORE INFO: 248.324.2000



ROBERT GAGNIUK
ROBERT.GAGNIUK@FREG.COM



JORDAN FRIEDMAN
JORDAN.FRIEDMAN@FREG.COM



RYLEE BATES
RYLEE.BATES@FREG.COM

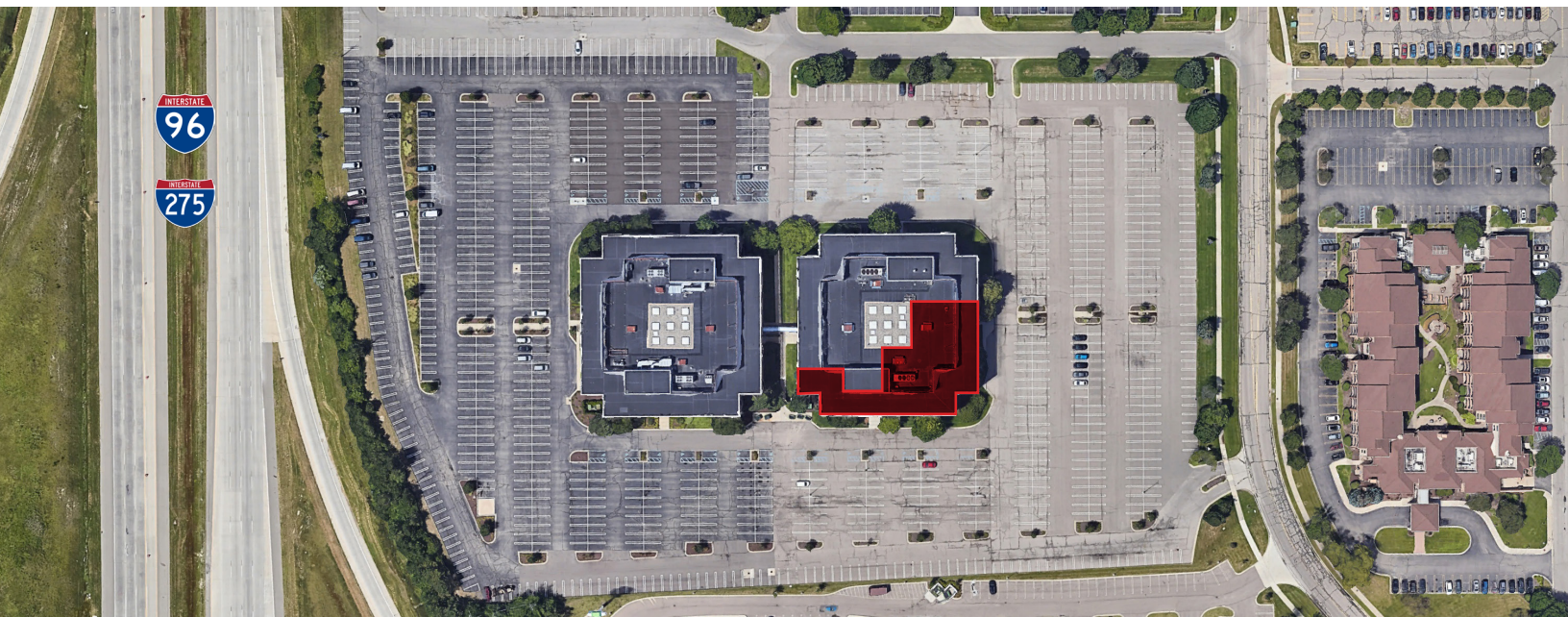
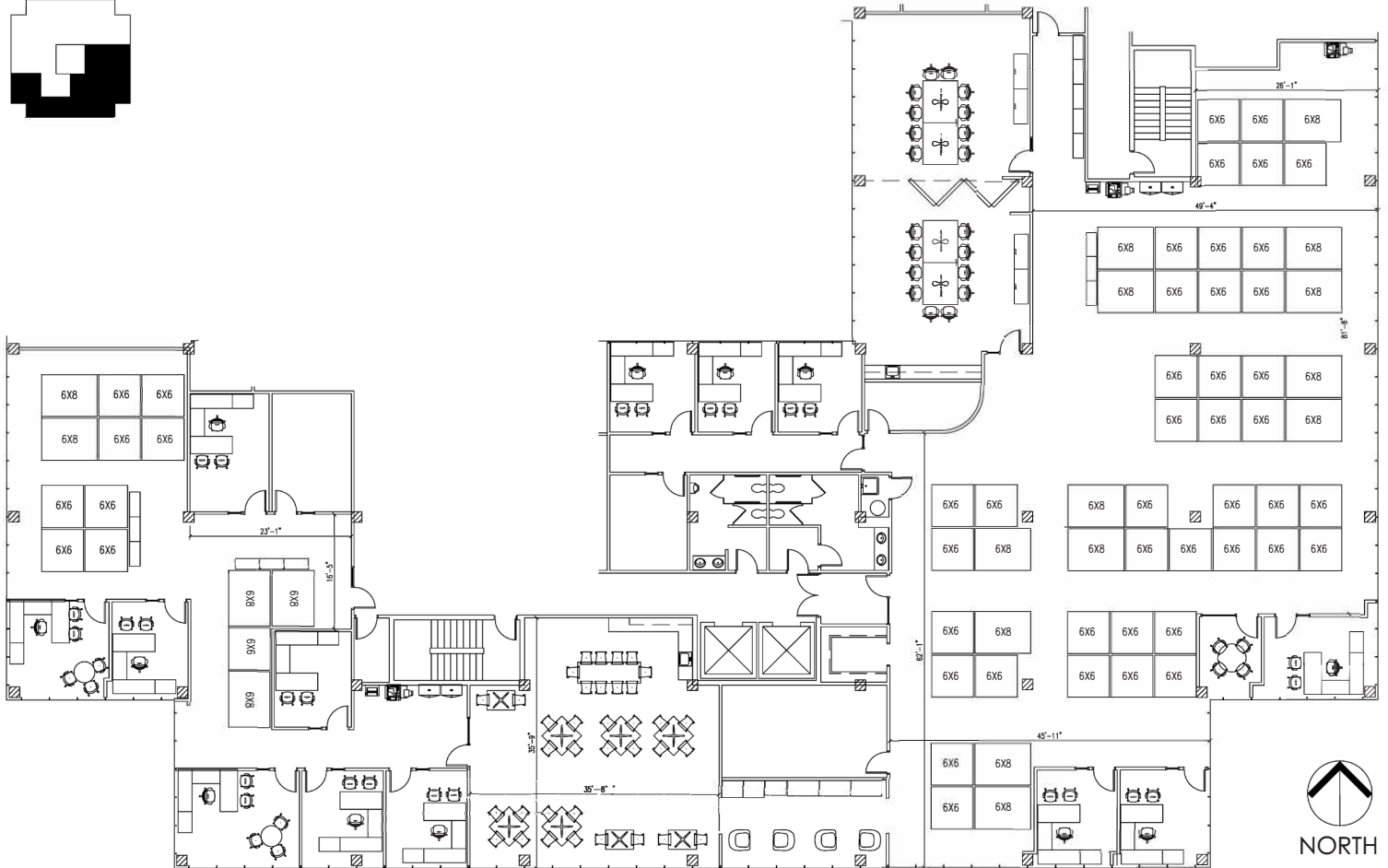
The information provided herein along with any attachment(s) was obtained from sources believed to be reliable, however, Friedman Real Estate makes no guarantees, warranties, or representations as to the completeness or accuracy of such information and legal counsel is advised. All information provided is subject to verification and no liability for reliance on such information or errors or omissions is assumed. The presentation of this property is submitted subject to errors, omissions, change of price or conditions, prior sale or lease, or withdrawal without notice. Copyright © 2024 Friedman Real Estate. All rights reserved.

LAUREL OFFICE PARK I - SUITE 233

SUITE PHOTOS

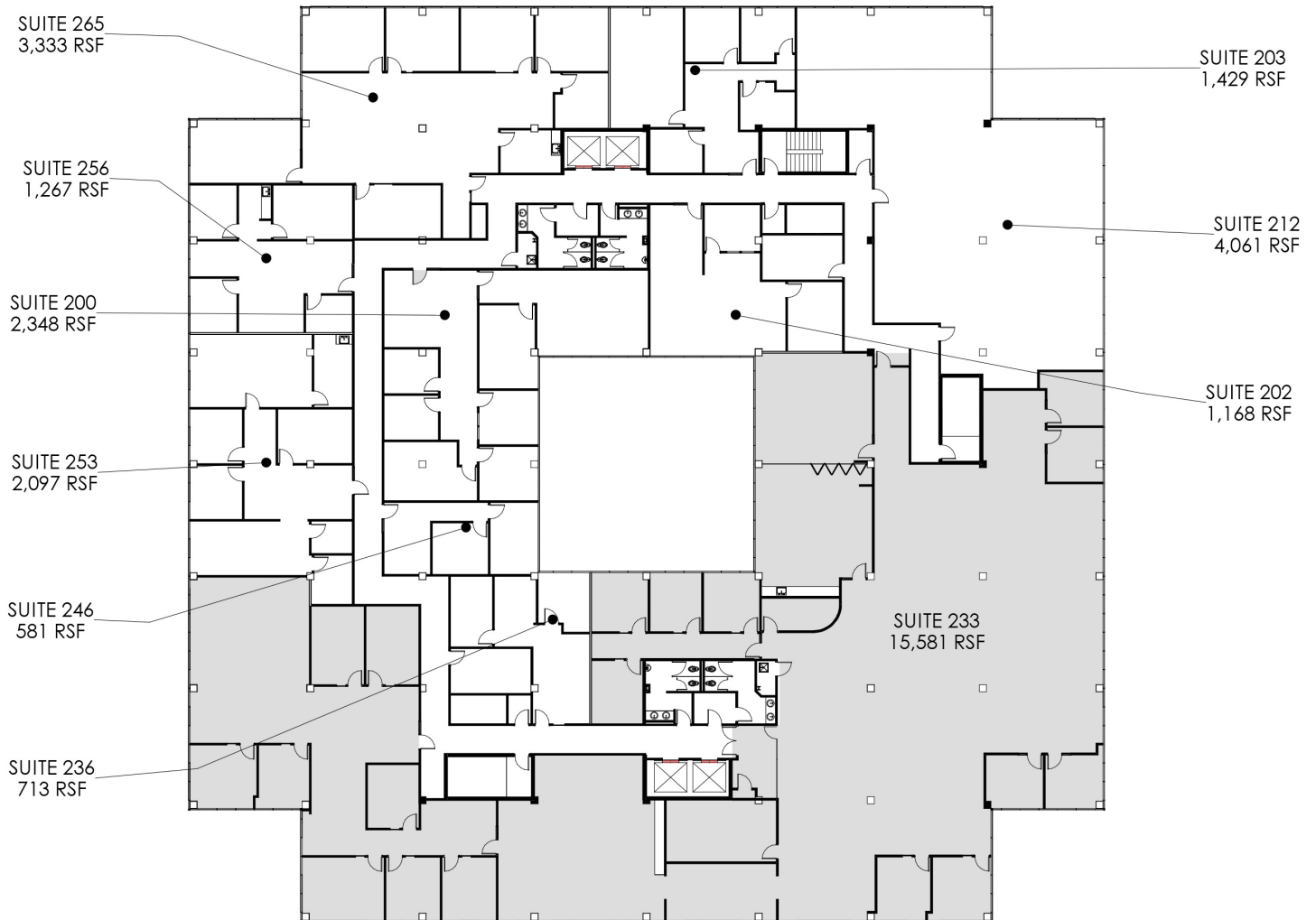


LAUREL OFFICE PARK I - SUITE 233 (±15,581 RSF) FLOOR PLAN - FURNISHED LAYOUT



LAUREL OFFICE PARK I - SUITE 233

2ND FLOOR OVERVIEW



ROBERT GAGNIUK
ROBERT.GAGNIUK@FREG.COM



JORDAN FRIEDMAN
JORDAN.FRIEDMAN@FREG.COM



RYLEE BATES
RYLEE.BATES@FREG.COM