



# COURTVIEW COMMONS

10001 COURTVIEW LANE, CHESTERFIELD, VA 23832

## NOW LEASING!



STATELY PROFESSIONAL OFFICE BUILDING IN THE HEART OF CHESTERFIELD COUNTY

### PROPERTY FEATURES

- ▶ **Expandable, turn-key office space available, private offices, kitchenette and restrooms**
- ▶ Illuminated pylon signage on busy Route 10 / Ironbridge Road corridor (39,000 vehicles per day)
- ▶ Four-way traffic stop at intersection on Ironbridge Road
- ▶ Close proximity to I-288 (2 miles) and Chesterfield County Government Complex (across street)
- ▶ Ample on-site parking
- ▶ Across the street from new IronWill Centre Shopping Center, including First Watch, Starbucks, Chipotle, CAVA, ABC

### PROPERTY FEATURES

**Space Available**      **Office**    1,500 SF – 3,250 SF – 4,900 SF

#### Nearby attractions and businesses

Chesterfield County Government Complex, US Postal Service, Food Lion, Starbucks, UPS Store, Tropical Smoothie, Allstate, TowneBank, Jersey Mike's, CAVA, The Goddard School, Edward Jones, Chipotle, Jiffy Lube, Chipotle, First Watch, Truist, Chesterfield Police, UPS Store



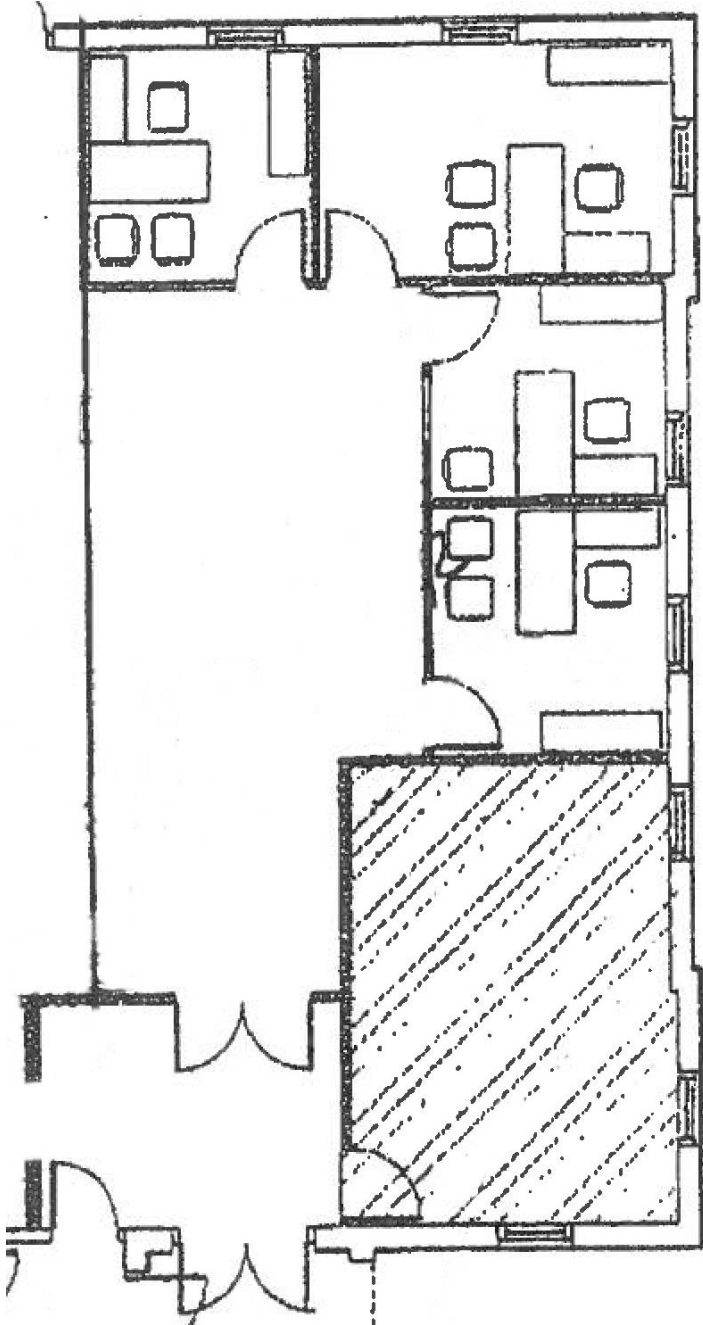
### PROPERTY CONTACT

Sean Eichert, (804) 419-2295  
seichert@plumgmt.com, www.plumgmt.com

Plus Management, LLC  
13281 River's Bend Blvd, Suite 201, Chester, VA 23836

# FLOOR PLAN – FIRST FLOOR

1,500 SF



# FLOOR PLAN – SECOND FLOOR

3,250 SF

