

9000 Virginia Manor Rd

Beltsville, Maryland 20705
Prince George's County

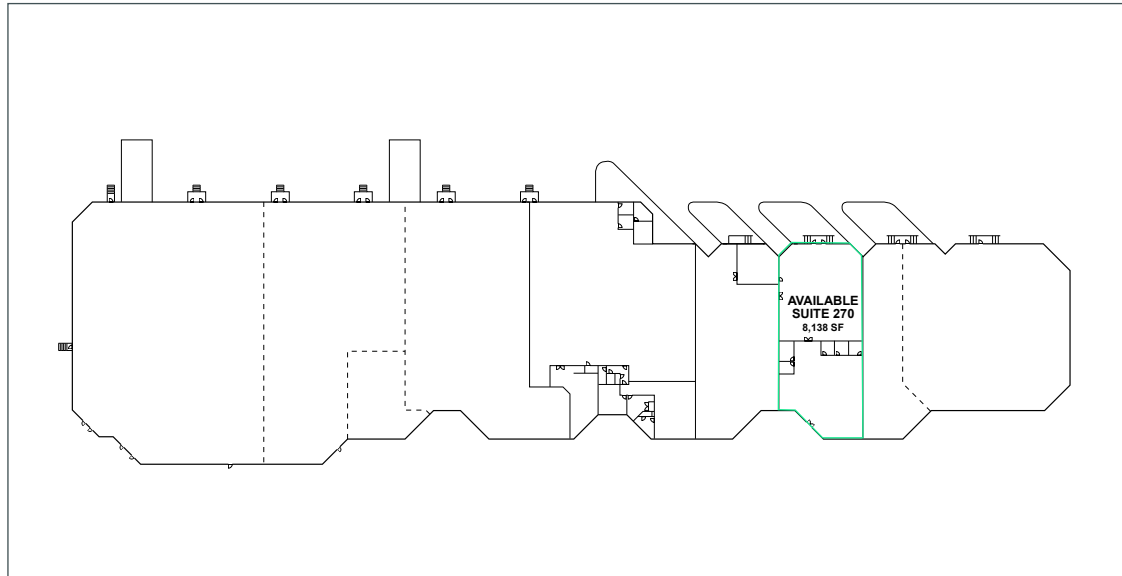
- + 8,138 SF Available
- + 1 dock high loading position
- + 24' Clear
- + Functional office existing
- + 3 per 1,000 SF parking ratio
- + Direct access to I-95 and Route 1



9000 Virginia Manor Road

Beltsville, MD 20705 | Prince George's County

For Sublease



Contact

Kevin O'Neil

First Vice President
410-244-3119
kevin.oneil1@cbre.com

Jared Ross

First Vice President
240-994-6477
jared.ross@cbre.com

