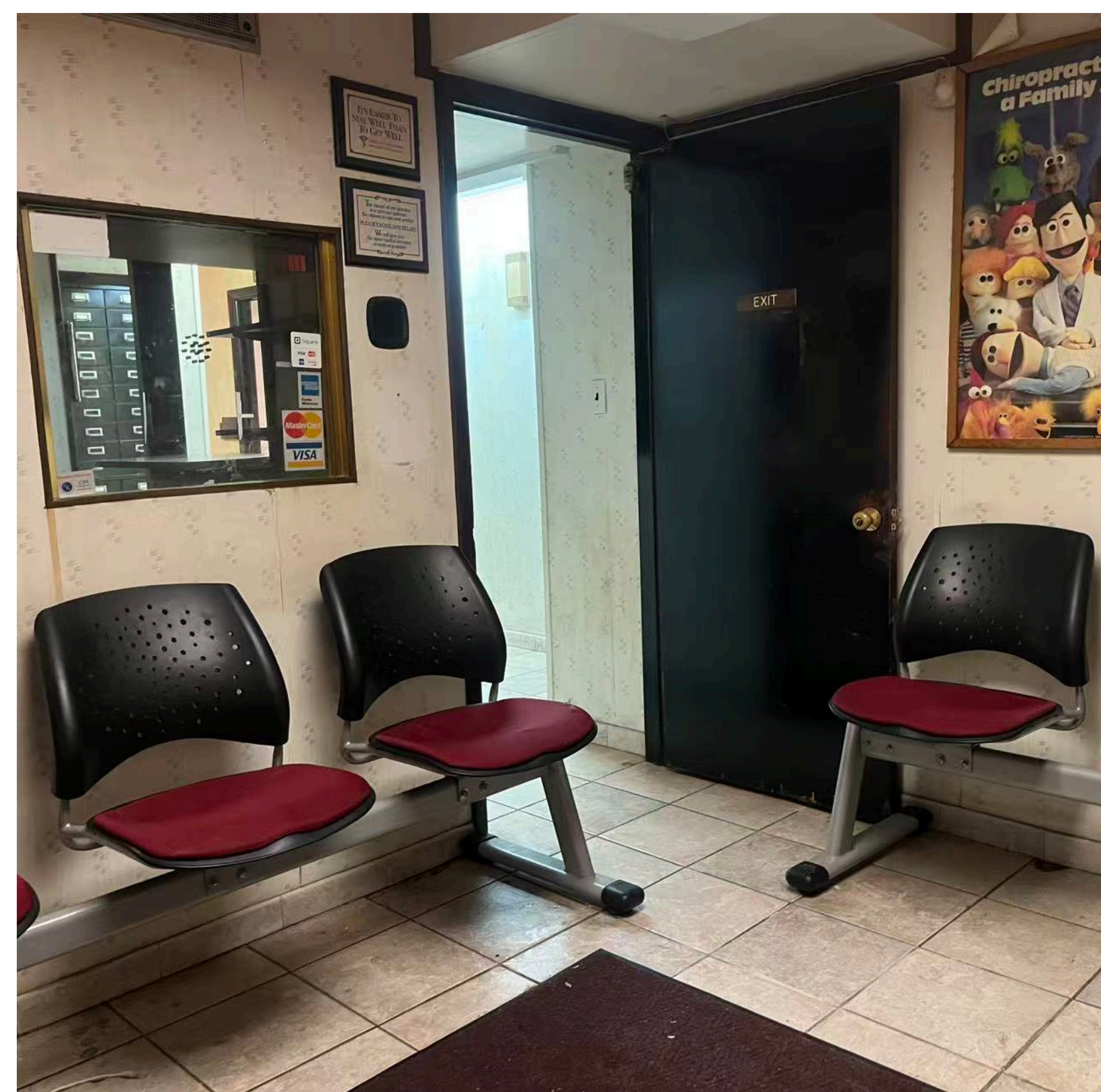
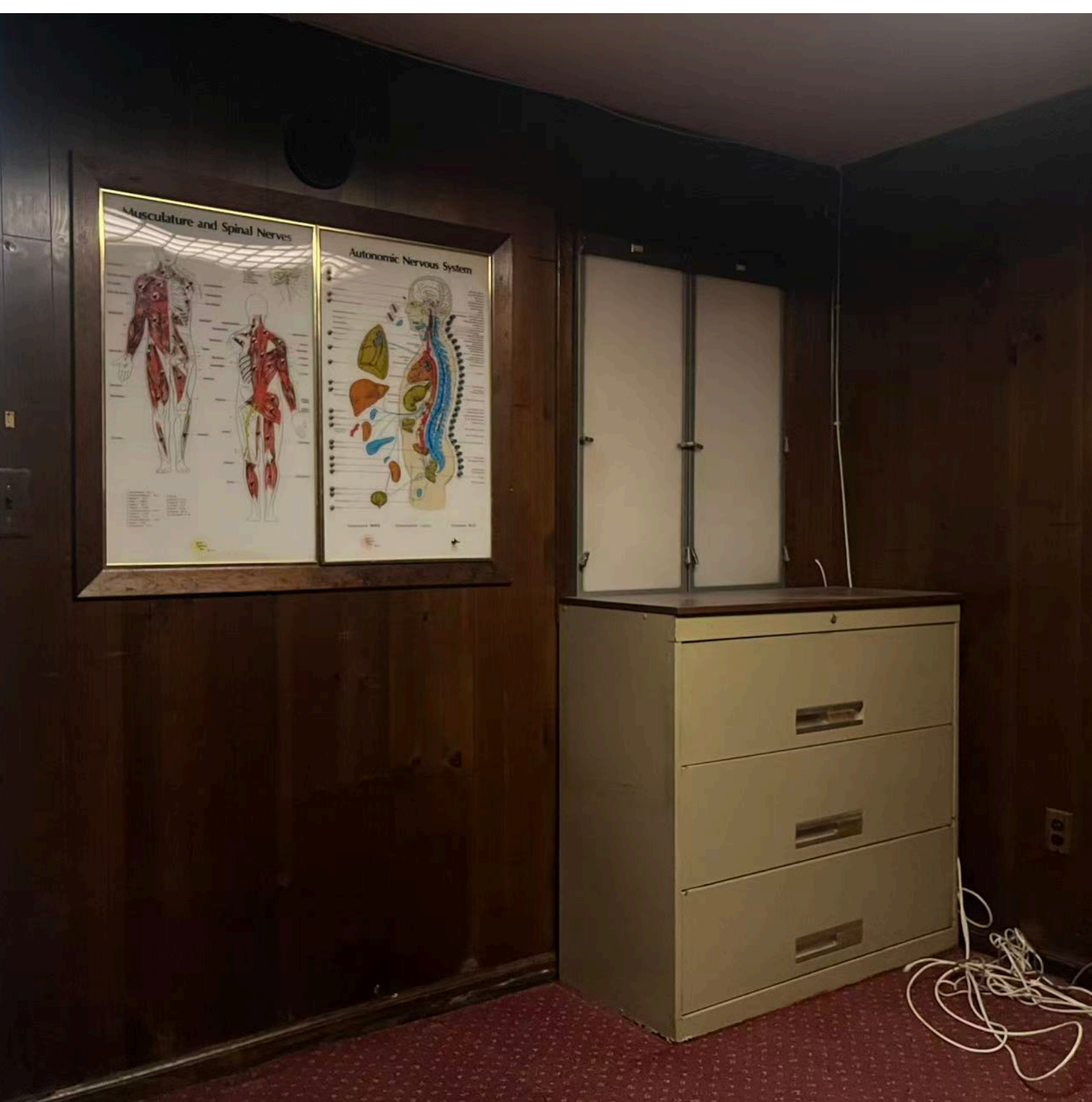




LIN PAN REALTY

# FLUSHING OFFICE FOR LEASE

LOWER LEVEL 1300 SF  
**\$4,200**



## LEASE HIGHLIGHTS

- Highly Visible Corner of Flushing Downtown
- Fully Built-Out as Medical Office Use
- Separate Handicap Access from Rear
- Separate Central AC System
- Fully Legalized Office Use
- Could be Combined into 2300 SF Office

## ABOUT THE PROPERTY

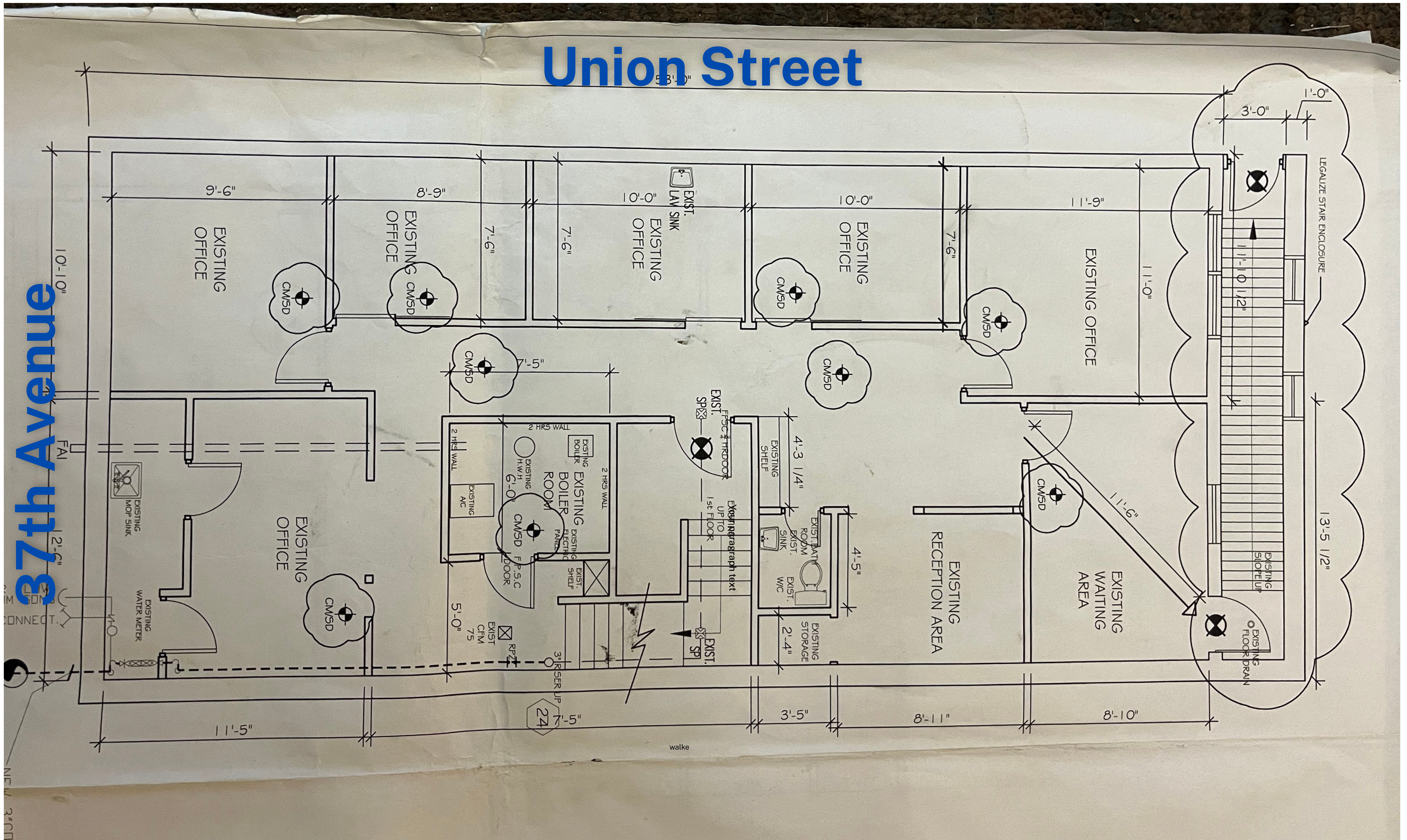
Fully Built-out 1300 SF Medical Space at Highly Visible Corner of Downtown Flushing, Legal Chiro's Office for 45 Years. Handicap Access from Rear of the Building, one Doctor Office, 5 Exam Rooms & a Private Bathroom. Separate CAC System. Perfect for School, Spa or a Medical Office. The Space Could be Combined with 1,000 SF Office Space on the Ground Floor.

LIN PAN REALTY

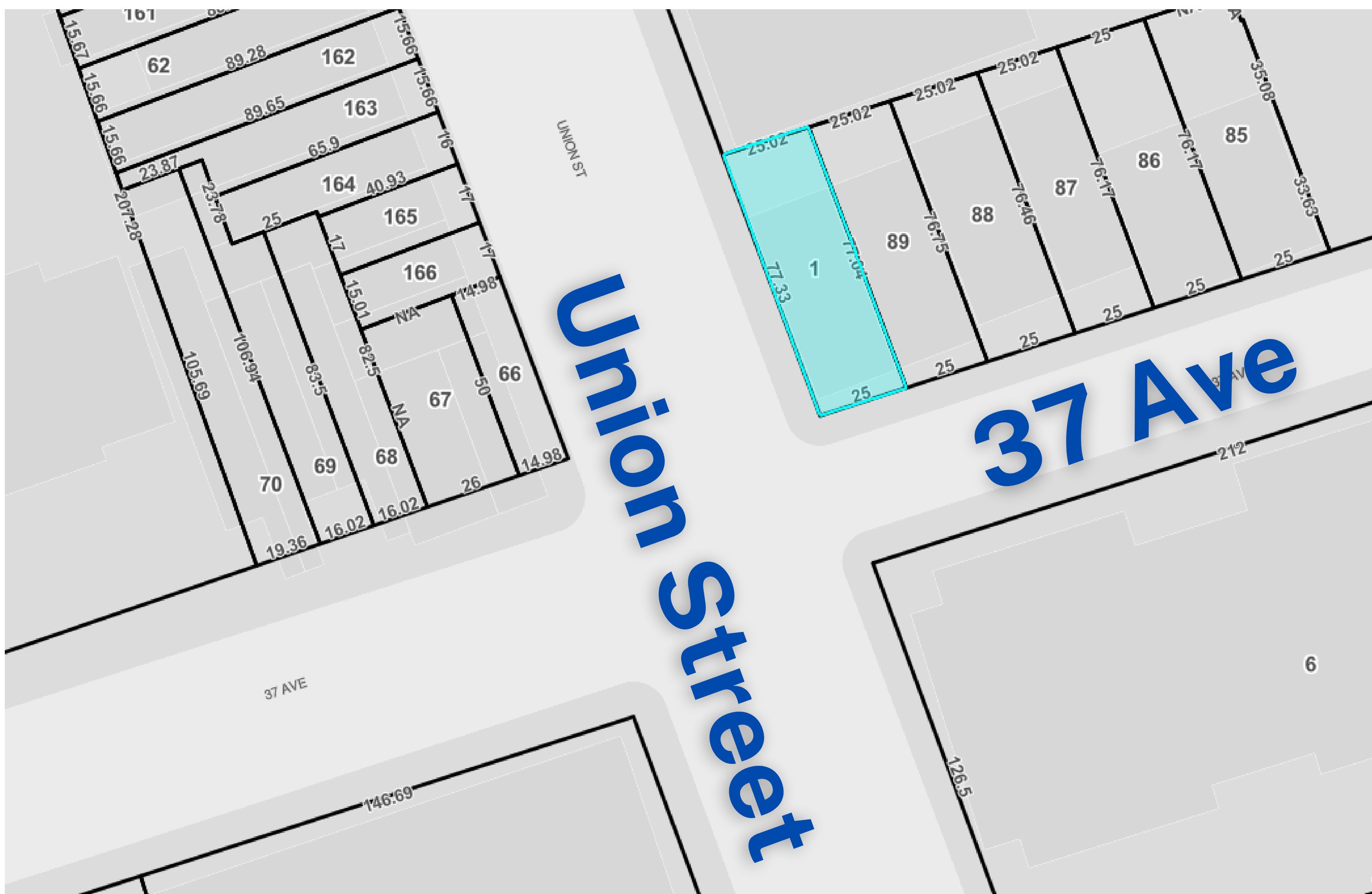
5 Bond St, #201, Great Neck, NY 11021  
516-693-9888 | [www.linpanrealty.com](http://www.linpanrealty.com)



# Floor Plan



# Site Plan



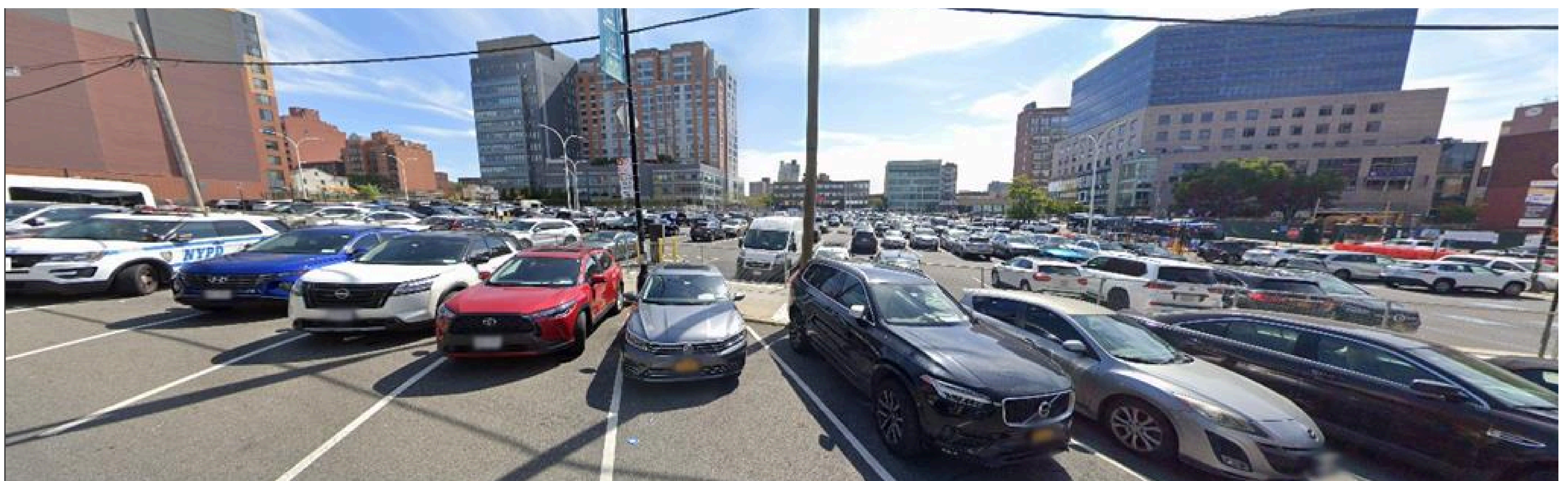
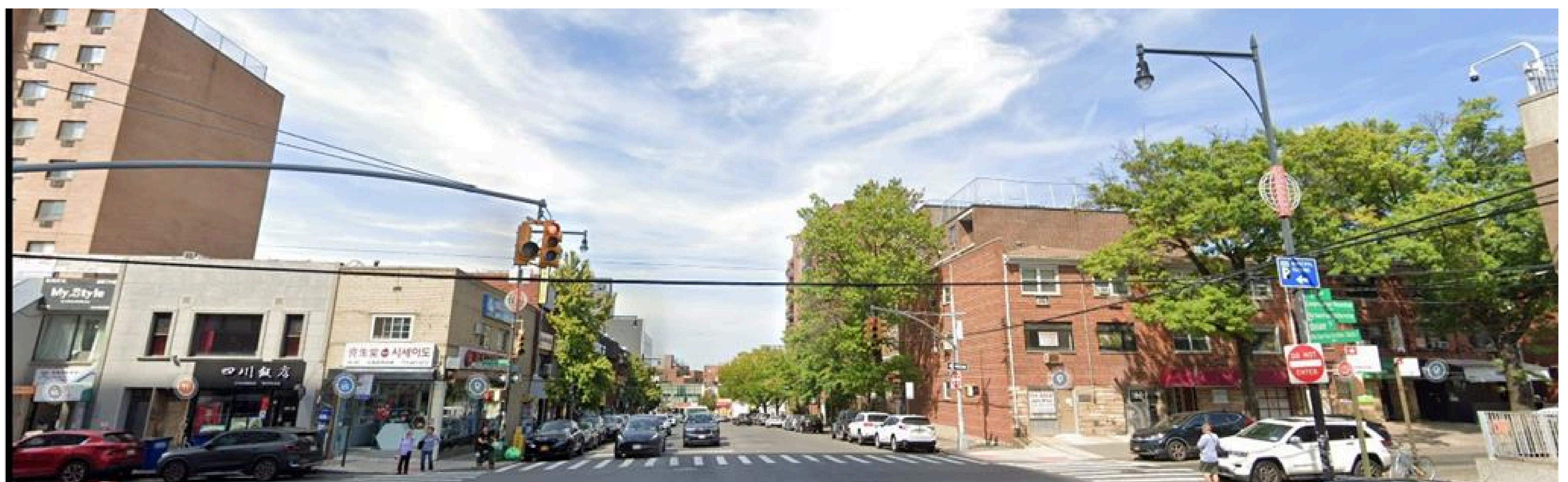
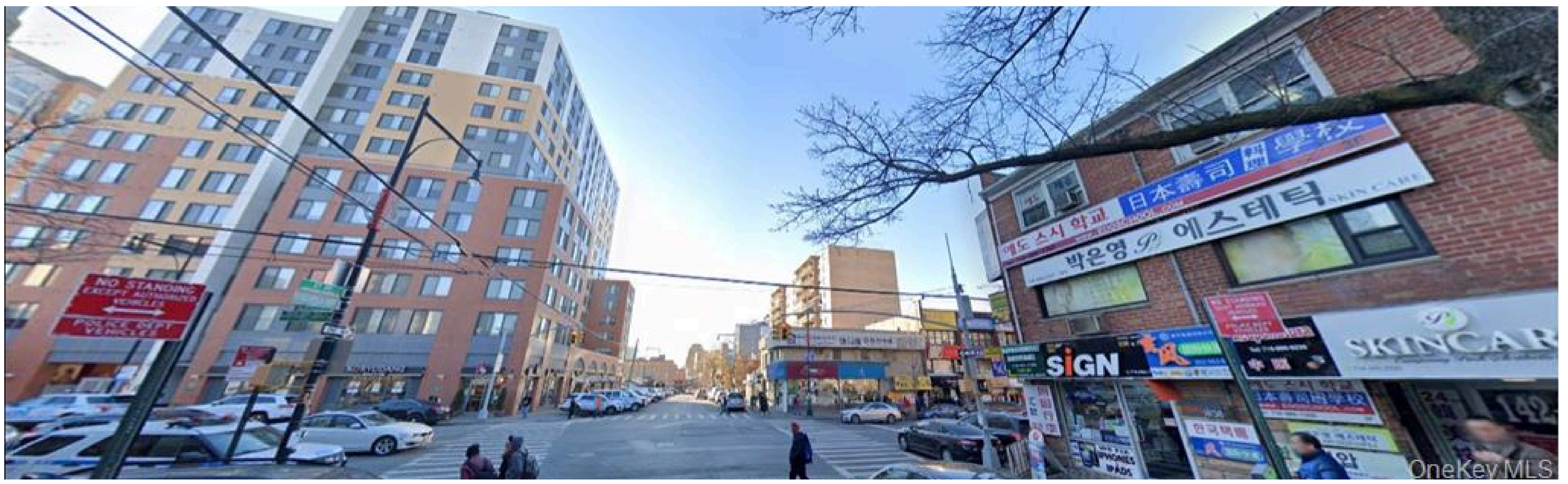
## CONTACT US

Derek Zheng    **917.902.3898**  
[derek@linpanrealty.com](mailto:derek@linpanrealty.com)

LIN PAN REALTY

5 Bond St, #201, Great Neck, NY 11021  
516-693-9888 | [www.linpanrealty.com](http://www.linpanrealty.com)





## CONTACT US

Derek Zheng    **917.902.3898**  
[derek@linpanrealty.com](mailto:derek@linpanrealty.com)

LIN PAN REALTY

5 Bond St, #201, Great Neck, NY 11021  
 516-693-9888 | [www.linpanrealty.com](http://www.linpanrealty.com)