

# 1200 SW 67th Lawton, OK 73505

INVESTMENT AND  
DEVELOPMENT OPPORTUNITY



## OFFERING SUMMARY

Sale Price: Subject To Offer

Lot Size: 4.34 Acres

Zoning: C-3

## PROPERTY OVERVIEW

Three commercial lots for sale on the hard corner of southwest 67th St. and high traffic Lee Blvd. Over 3.5 acres available for development. ±3,900sf office building occupied with two tenants also included in sale. Financials available upon signing a non disclosure agreement. Nearby businesses include Southwestern Hospital, Brentwood Senior Living, and Chateau of Lawton.

## PROPERTY HIGHLIGHTS

- Hard Corner of 67th St. and SW Lee Blvd.
- Occupied office building for sale
- Over 3 acres available for development

## MELISSA BUSSE

580.353.6100  
mbusse@insightbrokers.com

Measurements and other information are obtained from Owner and/or other reliable sources and are offered as an aid for investment analysis. Although deemed reliable, information is not guaranteed and is provided subject to errors, omissions, prior sale or withdrawal.





1200 SW 67th Lawton, OK 73505

INVESTMENT  
AND DEVELOPMENT  
OPPORTUNITY



**MELISSA BUSSE**

580.353.6100  
mbusse@insightbrokers.com



**1200 SW 67th Lawton, OK 73505**

INVESTMENT  
AND DEVELOPMENT  
OPPORTUNITY



**MELISSA BUSSE**

580.353.6100

[mbusse@insightbrokers.com](mailto:mbusse@insightbrokers.com)



Insight Commercial Real Estate Brokerage, LLC

**1200 SW 67th Lawton, OK 73505**

INVESTMENT  
AND DEVELOPMENT  
OPPORTUNITY



**MELISSA BUSSE**

580.353.6100  
mbusse@insightbrokers.com





1200 SW 67th Lawton, OK 73505

INVESTMENT  
AND DEVELOPMENT  
OPPORTUNITY

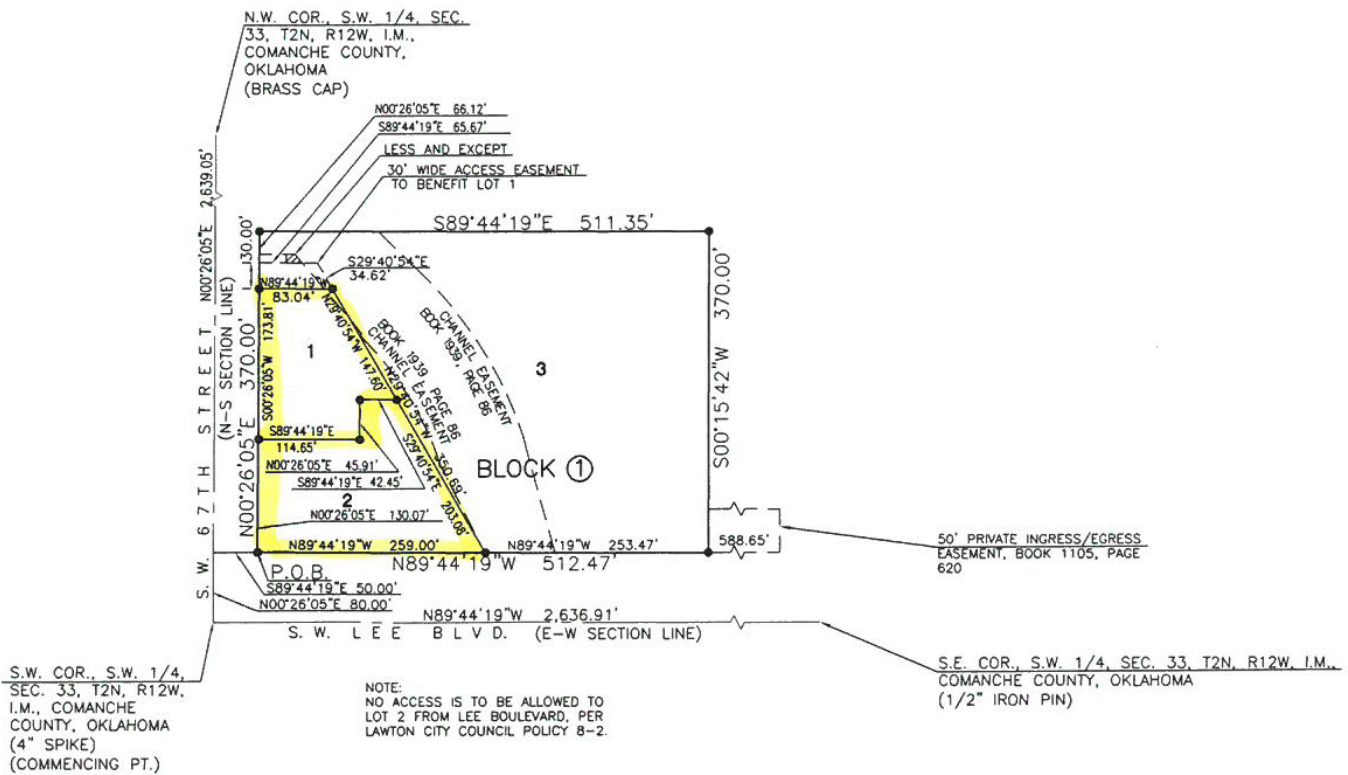
# VILLAGE WEST ADDITION

TO THE CITY OF LAWTON, COMANCHE COUNTY, OKLAHOMA

LOCATED IN THE SW 1/4, SECTION 33, T-2-N, R-12-W, I.M.,  
COMANCHE COUNTY, OKLAHOMA



**LEGEND**  
● 1/2" IRON PIN



MELISSA BUSSE

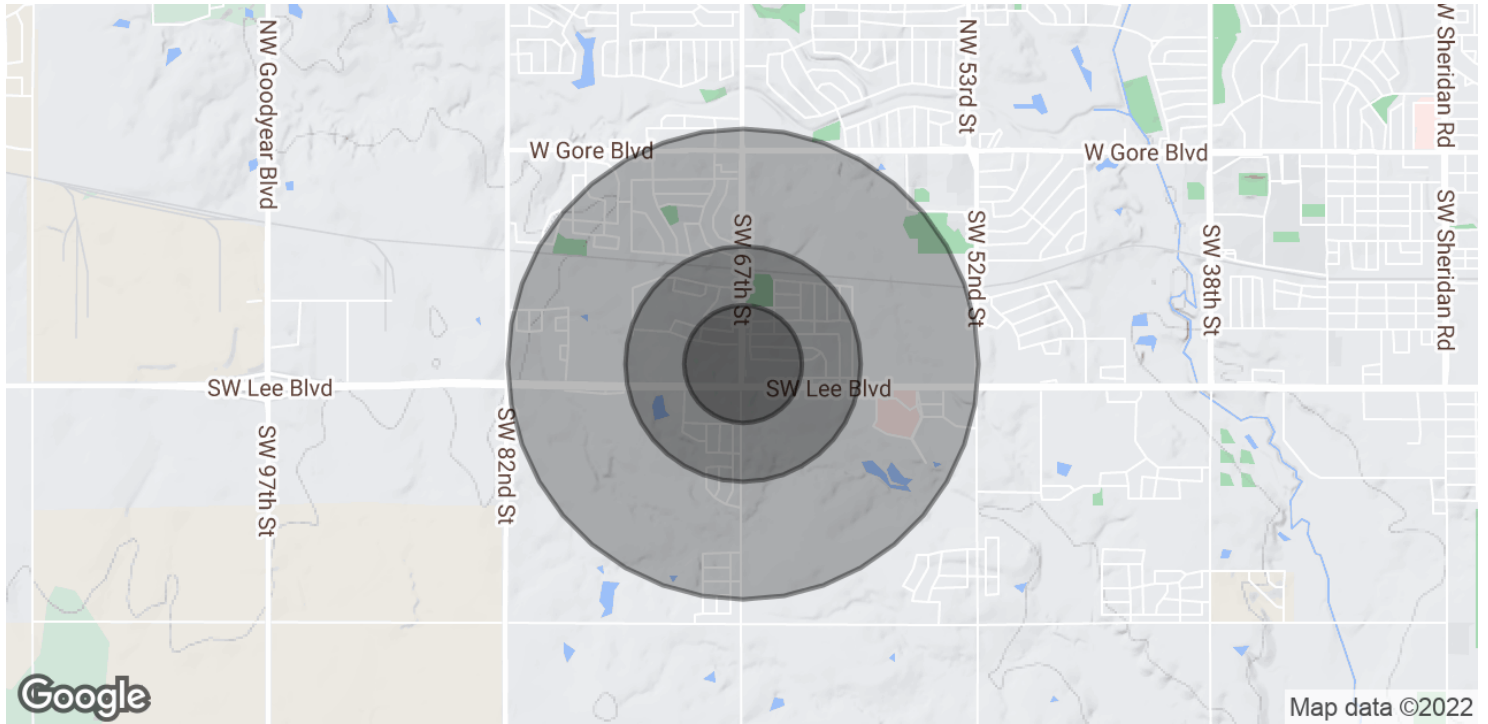
580.353.6100  
mbusse@insightbrokers.com





# 1200 SW 67th Lawton, OK 73505

## INVESTMENT AND DEVELOPMENT OPPORTUNITY



<b>POPULATION</b>	<b>0.25 MILES</b>	<b>0.5 MILES</b>	<b>1 MILE</b>
Total Population	962	3,726	10,450
Average Age	38.8	37.9	35.0
Average Age (Male)	42.1	40.6	38.2
Average Age (Female)	36.0	35.5	33.9

<b>HOUSEHOLDS &amp; INCOME</b>	<b>0.25 MILES</b>	<b>0.5 MILES</b>	<b>1 MILE</b>
Total Households	414	1,581	4,257
# of Persons per HH	2.3	2.4	2.5
Average HH Income	\$50,029	\$52,229	\$70,912
Average House Value	\$385,523	\$395,025	\$253,898

\* Demographic data derived from 2020 ACS - US Census

**MELISSA BUSSE**

580.353.6100  
mbusse@insightbrokers.com

