




950

L'Enfant  
Plaza SW



## PROPERTY HIGHLIGHTS

- Adjacent to L'Enfant Plaza, The Square, and the new International Spy Museum (40+ restaurants and shops within Plaza)
- Minutes from the U.S. Capitol, National Mall, and the Wharf
- Metro Accessible  (L'Enfant Metro Station)
- 2,900-35,000+ suites with private entrances available
- Signage opportunity along I-395



EXCELLENT LOCATION ADJACENT  
TO L'ENFANT PLAZA  
+ THE SQUARE

**40+**

RESTAURANTS, SHOPS,  
& ENTERTAINMENT



METRO ACCESSIBLE  
(L'ENFANT PLAZA)

## THE NEIGHBORHOOD

### Restaurants + Bars

- District Wharf
- Five Guys
- Au Bon Pain
- Subway
- Starbucks (3)
- Cafe 59
- Rise n' Shine
- Moe's Southwest Grill
- Rice Bar
- Vie de France
- Potbelly
- Amsterdam Falafel Shop
- Casey's Coffee
- Pizza Autentica

### Retail + Convenience

- CVS (2)
- FedEx Office Print and Ship
- Wells Fargo Bank
- Gold's Gym

### Hotels

- Hyatt Place Washington DC/National Mall
- Residence Inn by Marriott

### Museums, Venues & Attractions

- The Anthem
- International Spy Museum
- Museum on Main Street
- Air and Space Museum
- Hirshhorn Museum
- National Museum of the American Indian
- Museums of African Art
- United States Botanic Garden



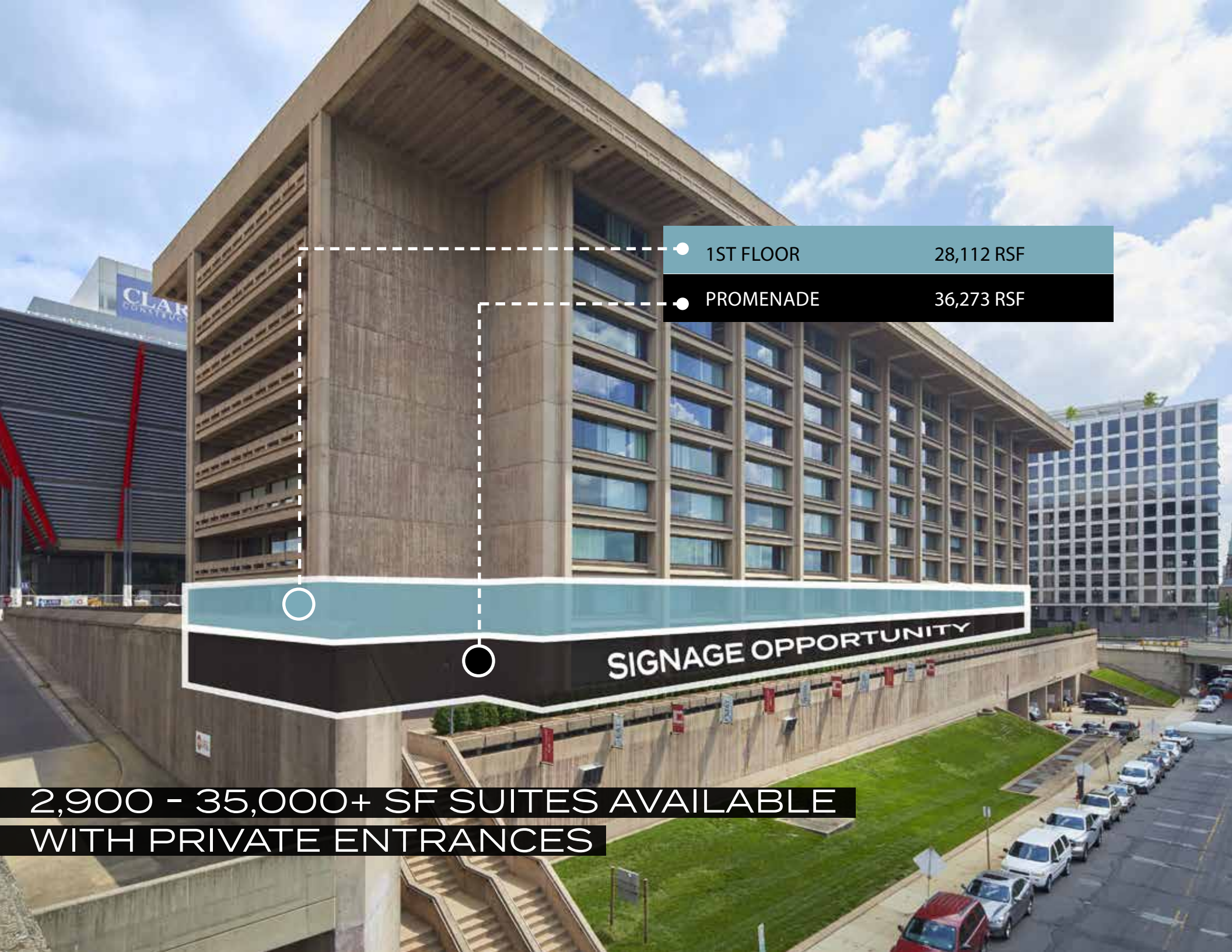
PROMINENT VISIBILITY +  
SIGNAGE OPPORTUNITY  
FACING THE WHARF  
AND I-395

5 MINUTES  
TO THE WHARF



I-395





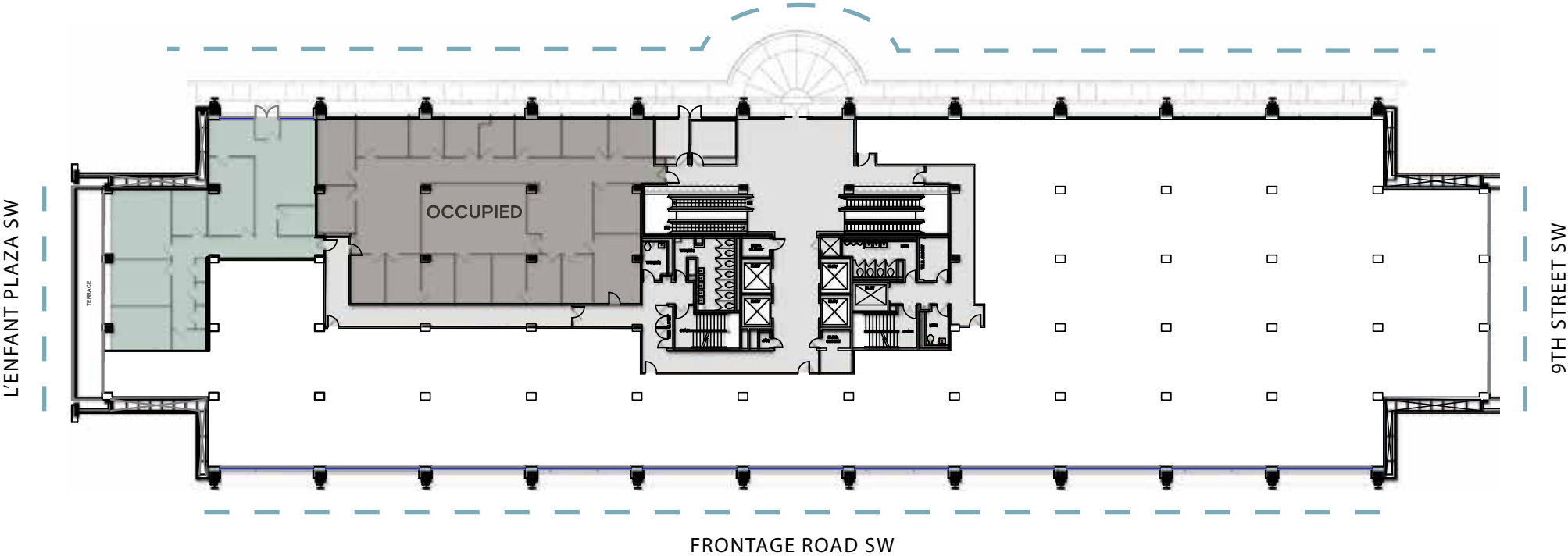
● 1ST FLOOR	28,112 RSF
● PROMENADE	36,273 RSF

**SIGNAGE OPPORTUNITY**

**2,900 - 35,000+ SF SUITES AVAILABLE WITH PRIVATE ENTRANCES**

**1ST FLOOR | SUITE 170 | 2,923 RSF**  
AVAILABLE NOW

**950**  
L'Enfant  
Plaza SW

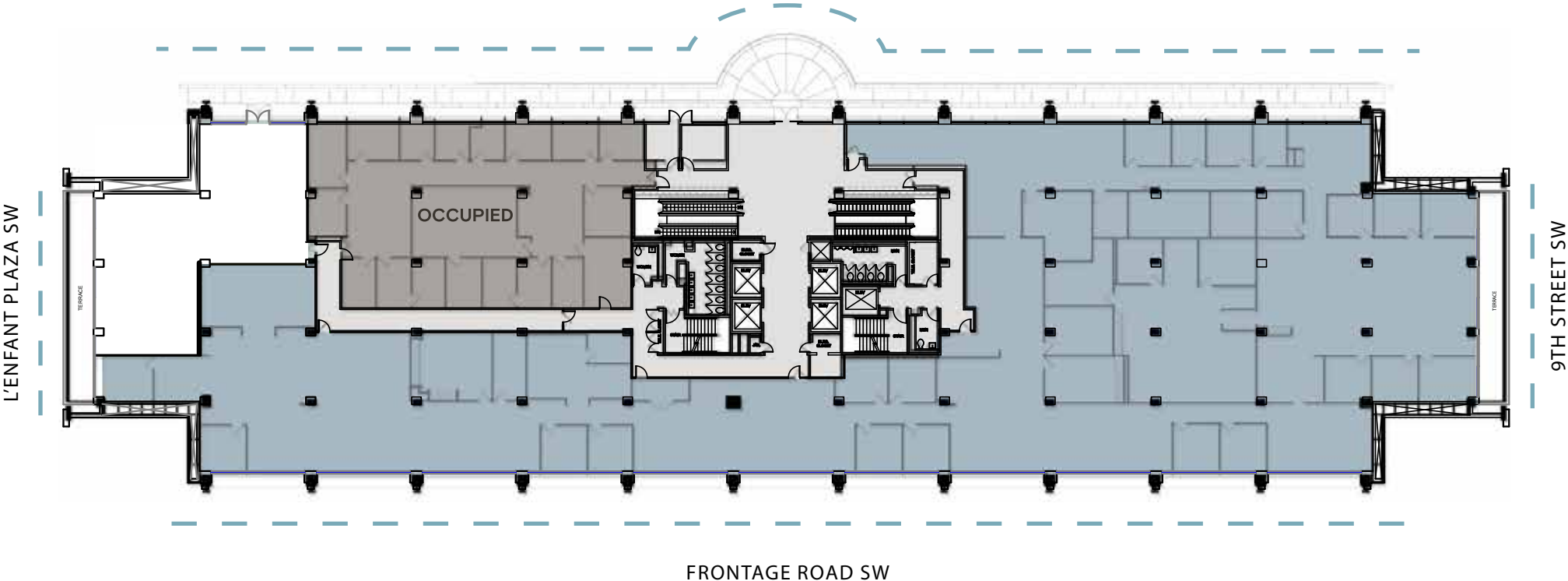


---  
WINDOW LINE



**1ST FLOOR | SUITE 140 | 25,189 RSF**  
AVAILABLE OCTOBER 2023

**950**  
L'Enfant  
Plaza SW



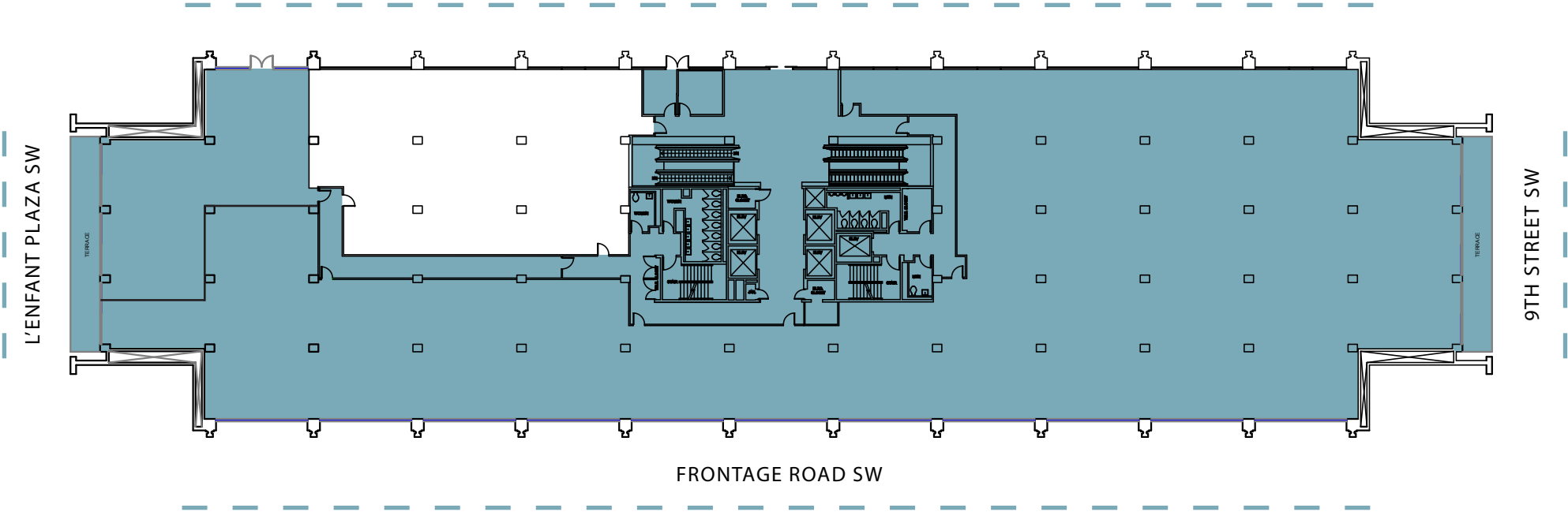
---  
WINDOW LINE





**1ST FLOOR | 28,112 RSF**  
AVAILABLE OCTOBER 2023

**950**  
L'Enfant  
Plaza SW



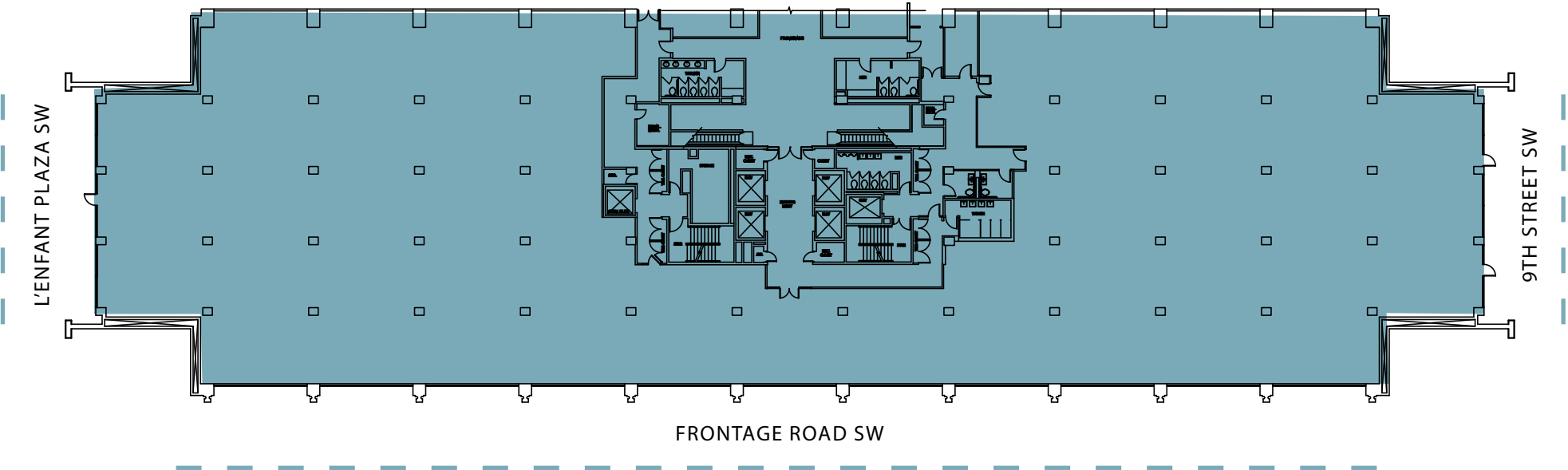
WINDOW LINE



**PROMENADE | 36,273 RSF**  
AVAILABLE NOW

**950**

L'Enfant  
Plaza SW



---  
WINDOW LINE



# Leasing Information:

**Jonathan Wellborn, Principal**

202.644.8552

[jonathan.wellborn@avisonyoung.com](mailto:jonathan.wellborn@avisonyoung.com)

**Will Stern, Principal**

202.644.8553

[will.stern@avisonyoung.com](mailto:will.stern@avisonyoung.com)

**Alston Offutt, Associate**

202.644.8554

[alston.offutt@avisonyoung.com](mailto:alston.offutt@avisonyoung.com)

**AVISON  
YOUNG**

2001 K Street NW, Suite 200 North  
Washington, DC 20006  
202.644.8700 | [avisonyoung.com](http://avisonyoung.com)

# 950

L'Enfant  
Plaza SW