

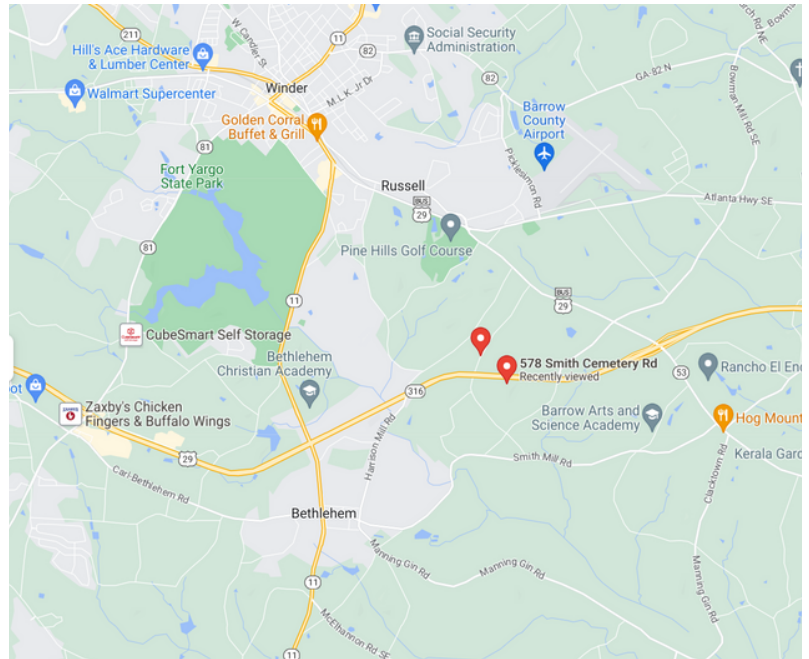
+/- 22.6 Acres

578 SMITH CEMETERY ROAD

WINDER, GA

## Property Features:

- Currently one large parcel / total 22.66 +/-
- Lot is divided by Hwy 316 /North side 10.56 +/- acres aka House Lot
- Current access is via Smith Cemetery Road
- South side is 12.10 +/- acres aka Tree Lot /currently limited access
- Lots are being divided so can be sold together or separately
- Current zoning is AG - Easy transition to Commercial



### For More Information, Contact:

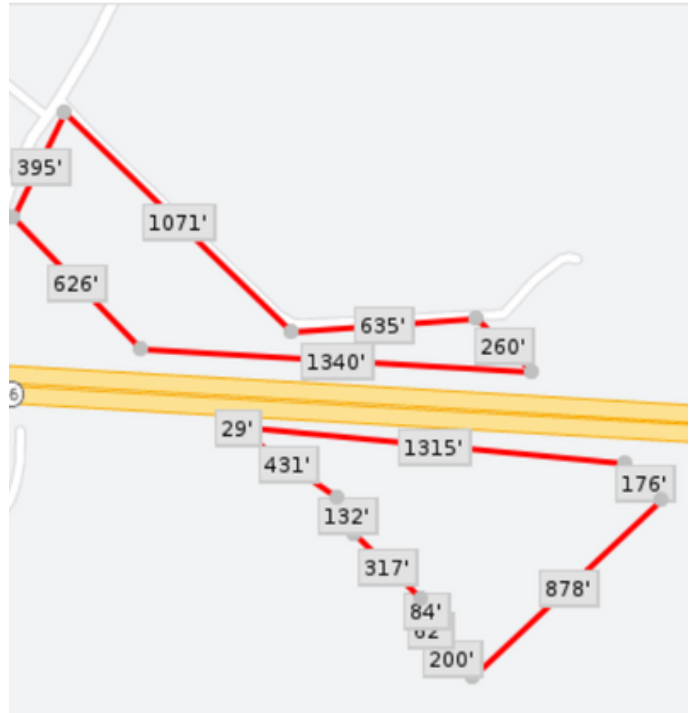
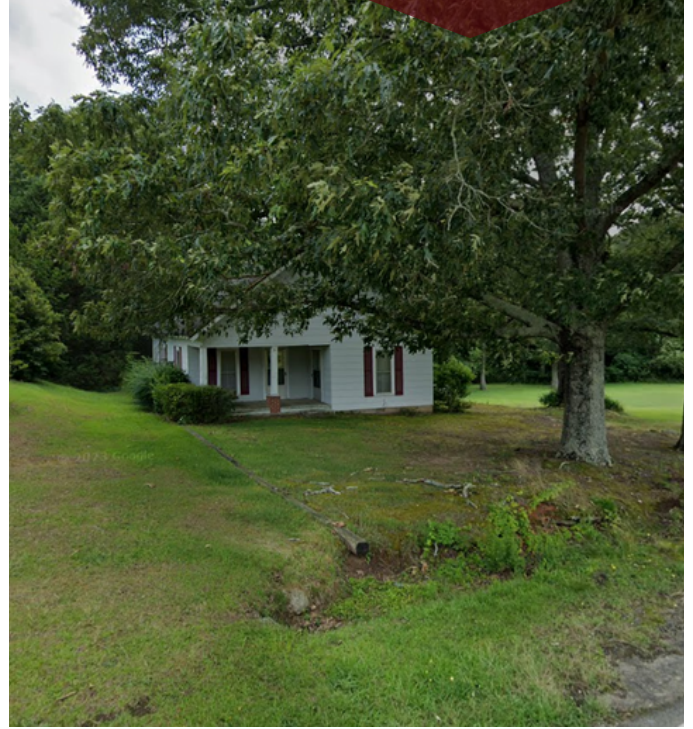
Rebecca Davis, Summit Real Estate  
rdavis@summitgeorgia.com

770-633-4370

The information contained herein is believed to be accurate but is not warranted as to accuracy and may change or be updated without notice.

578 Smith Cemetery Road  
Winder, GA

+/- 22.6 Acres



**For More Information, Contact:**  
Rebecca Davis, Summit Real Estate  
[rdavis@summitgeorgia.com](mailto:rdavis@summitgeorgia.com)  
770-633-4370

The information contained herein is believed to be accurate but is not warranted as to accuracy and may change or be updated without notice.