

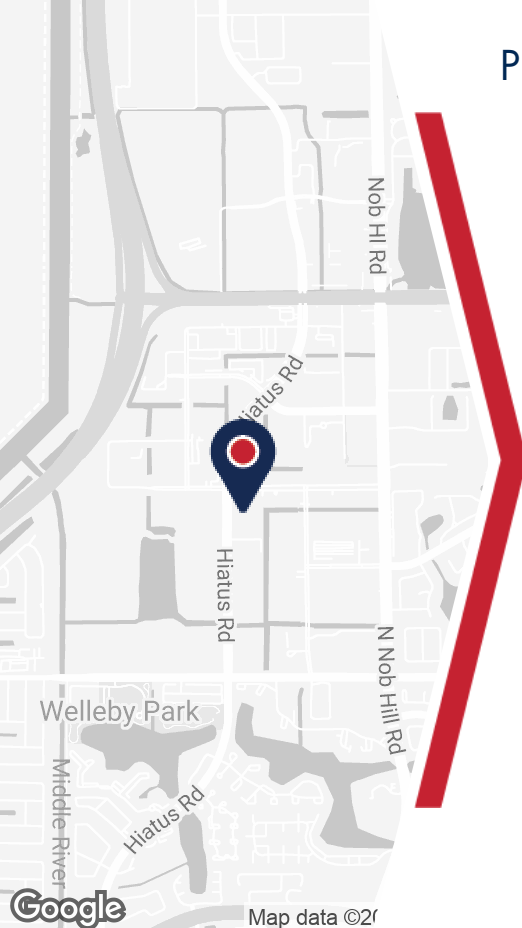
SUNRISE INDUSTRIAL PARK

4880 N HIATUS RD SUNRISE, FL 33351



PROPERTY DETAILS

- Each unit has BOTH 1 grade level and 1 dock height door
- 2025 Est. Op/Ex: \$5.50/sf
- Clear Height - 20'
- Easy Access to Sawgrass Expwy via Hiatus Rd. & W. Commercial Blvd
- Ample Parking
- I-1 Light Industrial zoning



ABOUT PROPERTY



PRICE

\$16.50 SF/yr (NNN)



YEAR BUILT

1986



AVAILABLE SF

6,000 +/-



PARKING

Surface



LOCATION

Broward County, FL

For more information:

Lawrence Oxenberg

954.652.2017 | Loxenberg@Bergercommercial.Com
bergercommercial.com

Keith R. Graves, CCIM, SIOR

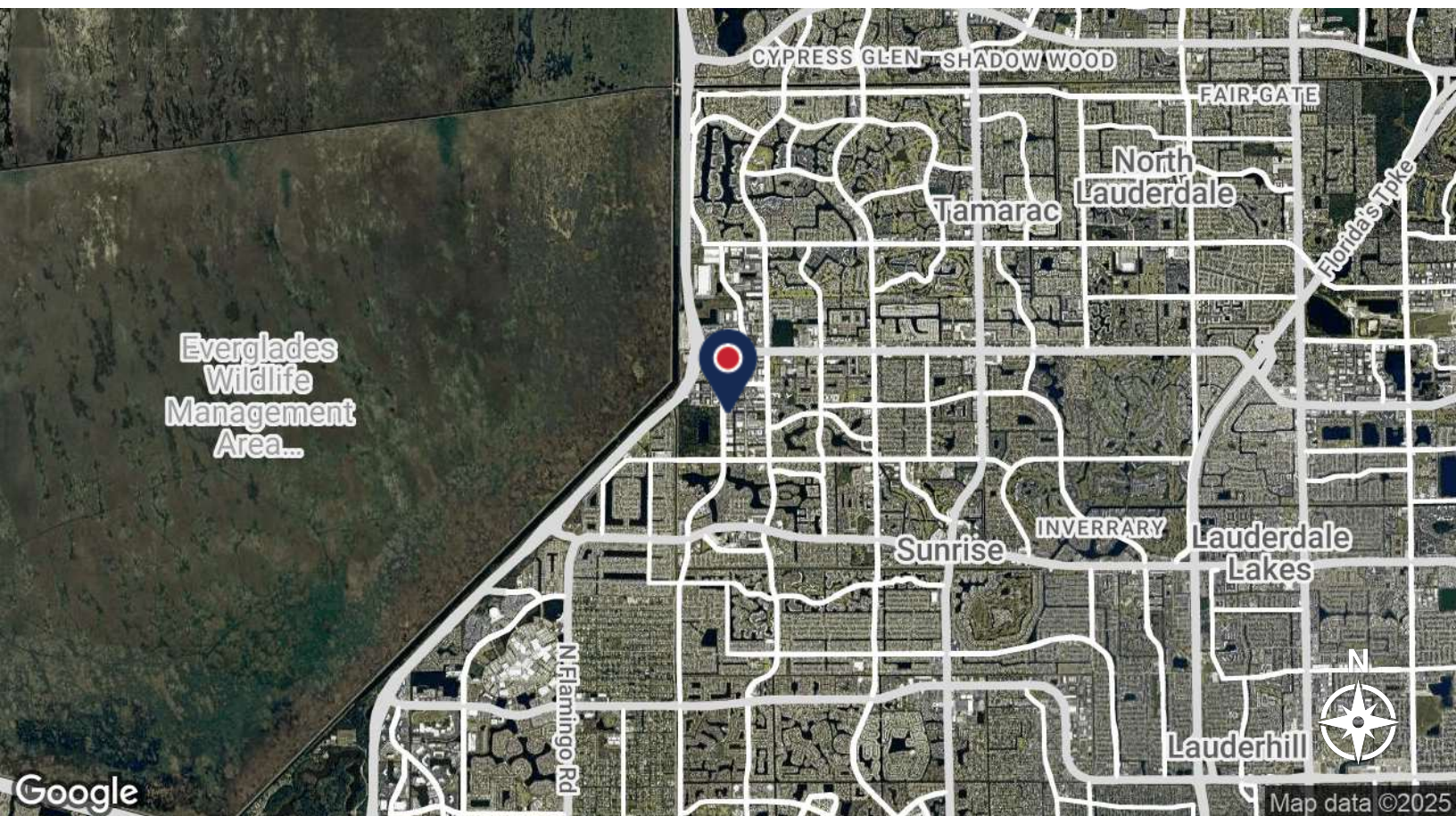
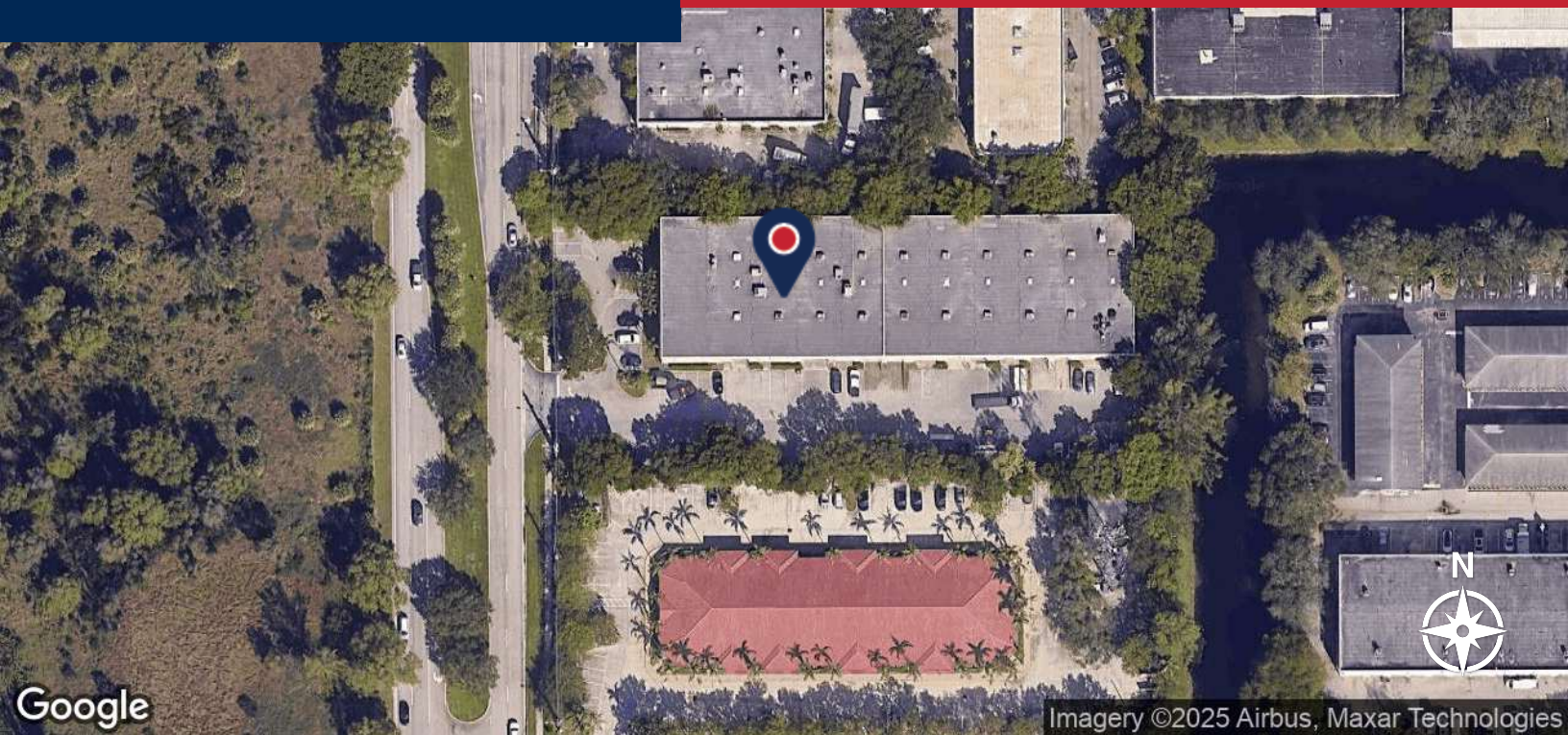
954.652.2031 | Kgraves@Bergercommercial.Com



Information furnished regarding this property is from sources deemed reliable, but no warranty or representation as to the accuracy thereof and it is submitted subject to errors, omissions, prior sale, lease or withdrawal without prior notice.

SUNRISE INDUSTRIAL PARK

LOCATION MAP



For more information:

Lawrence Oxenberg

954.652.2017 | Loxenberg@Bergercommercial.Com

bergercommercial.com

Keith R. Graves, CCIM, SIOR

954.652.2031 | Kgraves@Bergercommercial.Com



Information furnished regarding this property is from sources deemed reliable, but no warranty or representation as to the accuracy thereof and it is submitted subject to errors, omissions, prior sale, lease or withdrawal without prior notice.