

# 765 HIGHLAND OAKS DRIVE

WINSTON-SALEM, NORTH CAROLINA  
MEDICAL OUTPATIENT BUILDING



**TIFFANY SLAYDEN**  
704-906-9699  
tiffany@FlagshipHP.com

# FOR LEASE

# PROPERTY OVERVIEW

## PROPERTY OVERVIEW

- Medical building situated on 1.96 acres in a desirable medical park
- Excellent access to I-40, Silas Creek Parkway, Hanes Mall, and Novant Forsyth Medical Center
- Ample parking
- Available for immediate lease
- Other co-tenants include Dermatology and MedSpa
- 3-5 year minimum term



**TOTAL BUILDING AREA:**  
± 17,710 SF



**AVAILABLE SPACE:**  
4,439 SF



**LEASE RATE:**  
\$24.00/SF



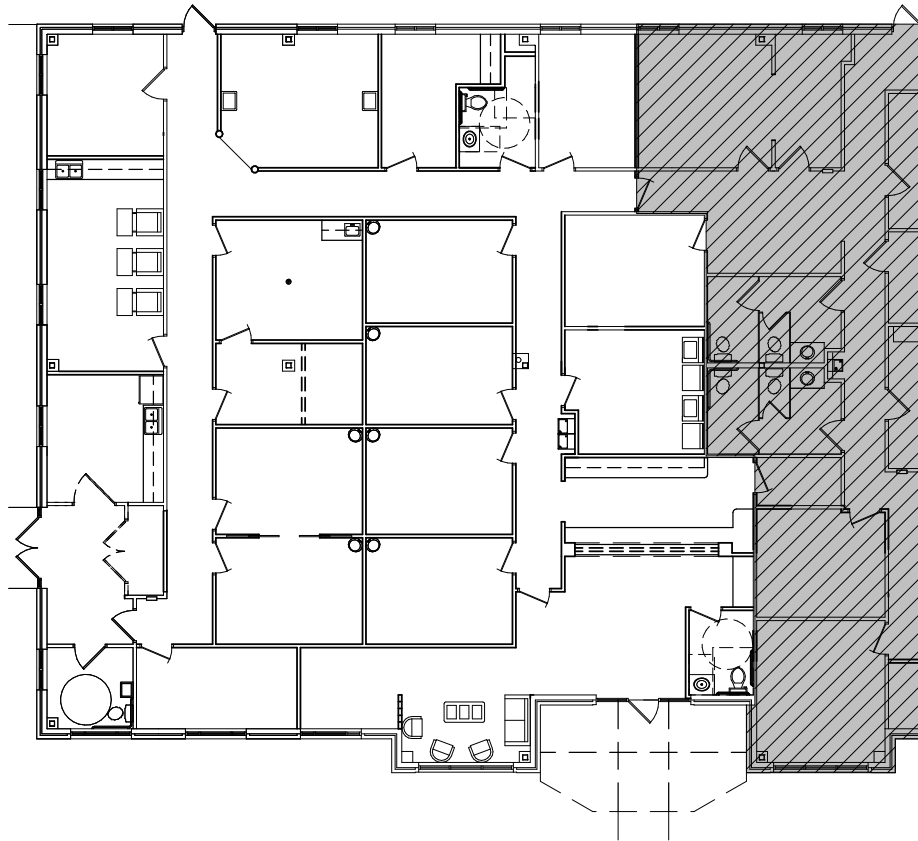
**LEASE TYPE:**  
NNN

## CONTACT:

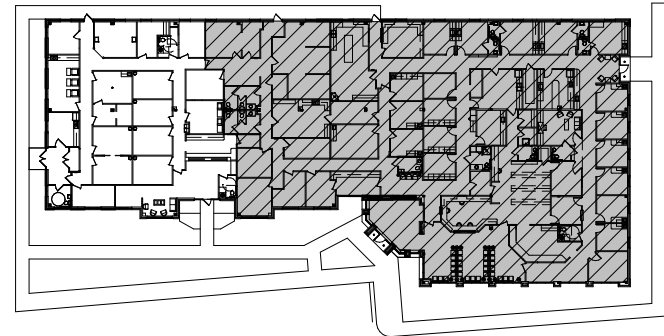
**TIFFANY SLAYDEN**  
704-906-9699  
tiffany@FlagshipHP.com



# FLOOR PLAN



**Available space: 4,439 SF**  
**Medical Office**



# MAP AREA

