

**FOR LEASE**

**FREE STANDING PAD SITE**

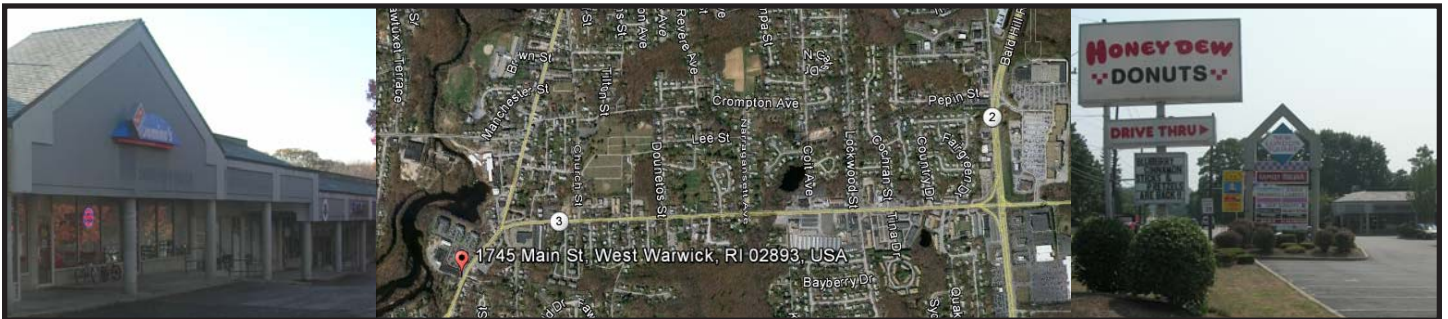
**WITH DRIVE THRU**

**2,000 SF**

**RTE. 3 - WEST WARWICK, RI**



**NEW LONDON SQUARE - 1745 MAIN ST. - WEST WARWICK, RI**



- LOCATED AT 1745 MAIN STREET WEST WARWICK (RTE. 3)
- AMPLE PARKING
- BUSY SHOPPING CENTER WITH HIGH VISIBILITY
- JOIN DOMINOS PIZZA, FAMILY DOLLAR & AARONS ELECTRONICS
- WILL CUSTOMIZE TO SUIT

Phone: 401-821-0700

Email: [smendes@mutualprop.com](mailto:smendes@mutualprop.com)

