

FOR LEASE



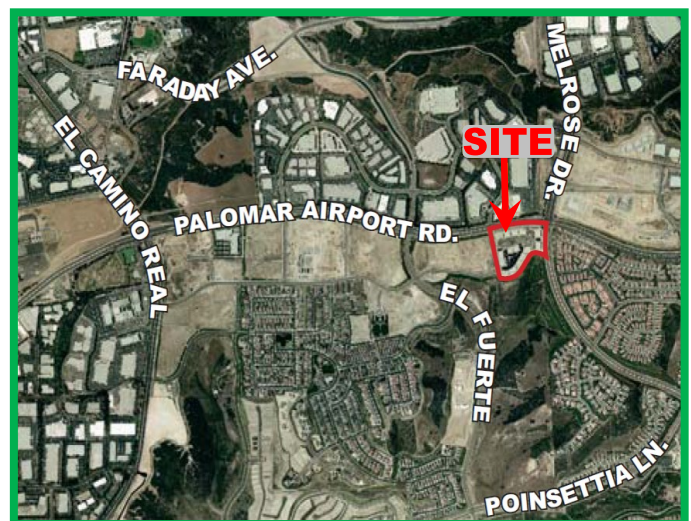
2772 Gateway Rd.

Carlsbad, CA 92009

\$1.85 PSF/mo Full Service* (janitorial separate)
+/- 7,000 Rentable Square Feet (est.)



- *FIRST FLOOR "CLASS A" OFFICE located at The Spectrum @ Bressi Ranch*
- *Highly Functional Office Configuration*
- *Premium Finishes and Amenities Throughout*
- *Luxurious Common Area Kitchen / Break-Room*
- *Shared Entrance & Reception Area*
- *Building Frontage to Palomar Airport Road and Melrose Drive*



This information is compiled from data which we believe to be correct but no liability is assumed by this company as to accuracy of such data. v1

Nick Zech | CA BRE Lic. #01721457
858.232.2100
nzzech@cdccommercial.com

Matt Orth | CA BRE Lic. #01884500
858.736.1337
morth@cdccommercial.com



Map



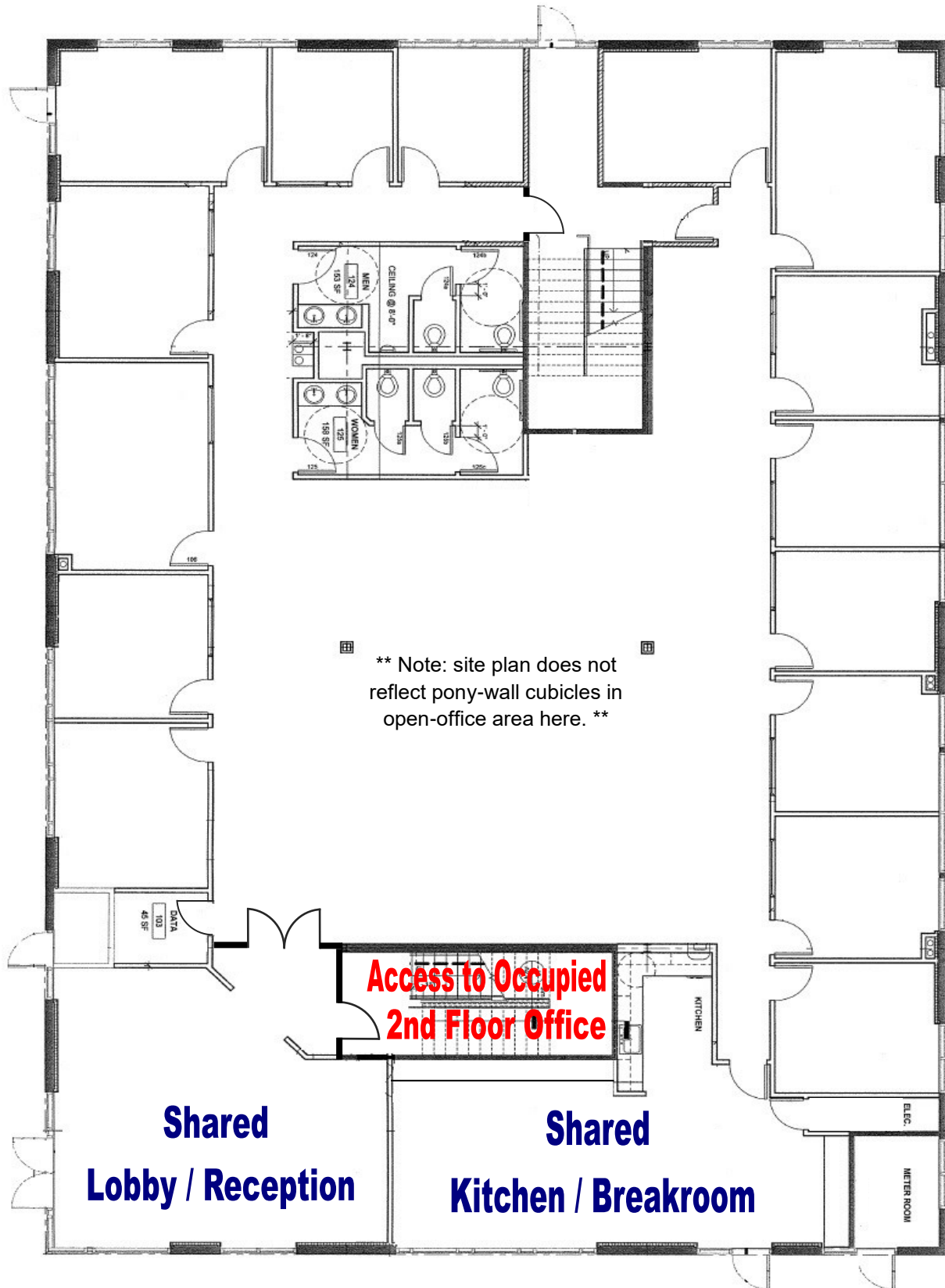
This information is compiled from data which we believe to be correct but no liability is assumed by this company as to accuracy of such data. v1

Nick Zech | CA BRE Lic. #01721457
858.232.2100
nzech@cdccommercial.com

Matt Orth | CA BRE Lic. #01884500
858.736.1337
morth@cdccommercial.com



Floor Plan



This floor plan / site plan is an approximation for reference purposes, no liability is assumed by this company as to accuracy of such data. This information is compiled from data which we believe to be correct but no liability is assumed by this company as to accuracy of such data. v1

Nick Zech | CA BRE Lic. #01721457
858.232.2100
nzzech@cdccommercial.com

Matt Orth | CA BRE Lic. #01884500
858.736.1337
morth@cdccommercial.com

CDC
COMMERCIAL, Inc.

Site Plan



This information is compiled from data which we believe to be correct but no liability is assumed by this company as to accuracy of such data. v1

Nick Zech | CA BRE Lic. #01721457
858.232.2100
nzech@cdccommercial.com

Matt Orth | CA BRE Lic. #01884500
858.736.1337
morth@cdccommercial.com



Additional Photos

Shared Reception



Large Window-lined Private Offices



Shared Kitchen / Break-Room



Restrooms



This information is compiled from data which we believe to be correct but no liability is assumed by this company as to accuracy of such data. v1

Nick Zech | CA BRE Lic. #01721457
858.232.2100
nzzech@cdccommercial.com

Matt Orth | CA BRE Lic. #01884500
858.736.1337
morth@cdccommercial.com

