



FOR LEASE

PROFESSIONAL OFFICE | MEDICAL SPACES

THE COURTYARD

27349 JEFFERSON AVE
TEMECULA, CA 92590

KYLE FRIED, CCIM, MBA

951.553.0012

kyle@seawaypropertiesCRE.com

Lic # 02200647

EMILY LEVANDUSKI

951.639.4230

emily@seawaypropertiesCRE.com

Lic # 02207533

CRAIG W. WAY

951.237.7866

seawayproperties@aol.com

Lic # 01336376

THE COURTYARD

27349 JEFFERSON AVE
TEMECULA, CA 92590

THE COURTYARD is a ±36,474 rentable square foot professional and medical office property located in the City of Temecula. The property features attractive architecture, high-quality interior improvements, efficient layouts with no core or load factor, elevator service, and a landscaped courtyard garden. Suites are fully improved, move-in ready, and available for professional office, medical, or dental users.

THE COURTYARD benefits from its location near Jefferson Avenue and Winchester Road, with immediate access to Interstate 15 (0.25 miles) and The Promenade regional shopping center (0.35 miles). Surrounded by major retailers, restaurants, and stable housing growth, Temecula remains a strong professional and medical hub.

Historically, the property has maintained high occupancy and steady lease performance, driven by its suite flexibility, accessibility, and desirable location.



PROPERTY INFO

Address	27349 Jefferson Ave Temecula, CA 92590
Lot Size	2.41 Acres
Parking Ratio	4/1,000
Year Built	1989
Zoning	CC

- 468 SF - 2,189 SF Professional/Medical Offices Available
- Prime Location
- Outstanding Demographics
- Multi Discipline Office / Medical Tenant Mix

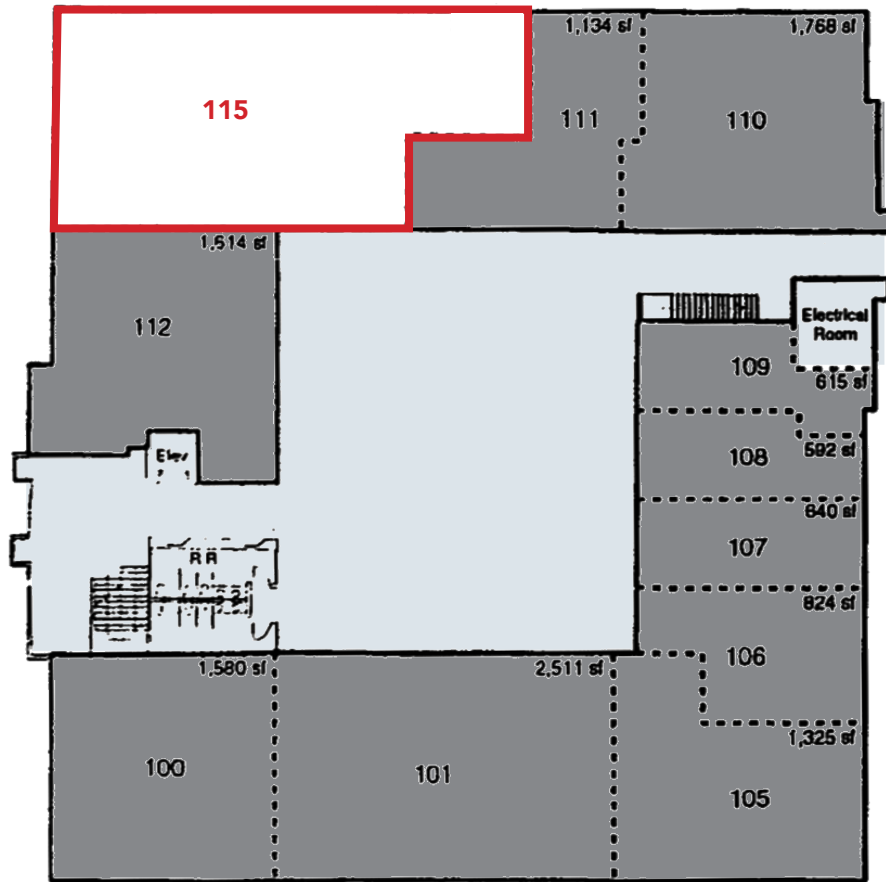


THE COURTYARD

27349 JEFFERSON AVE
TEMECULA, CA 92590

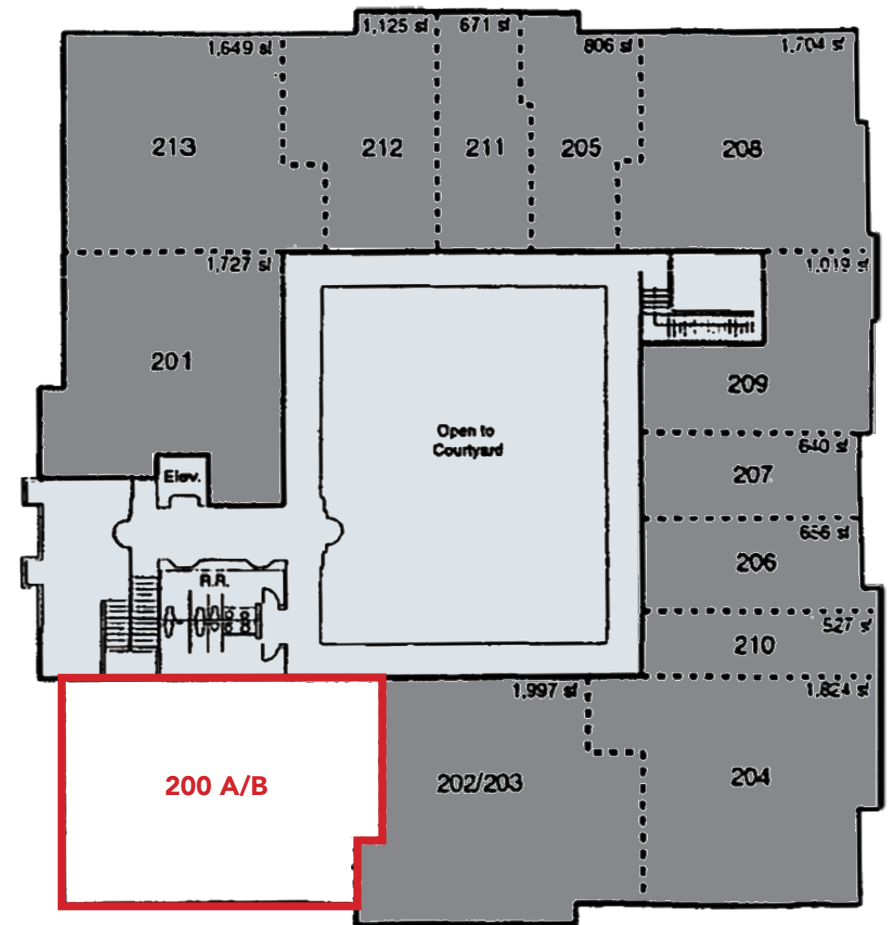
PROPERTY PHOTOS





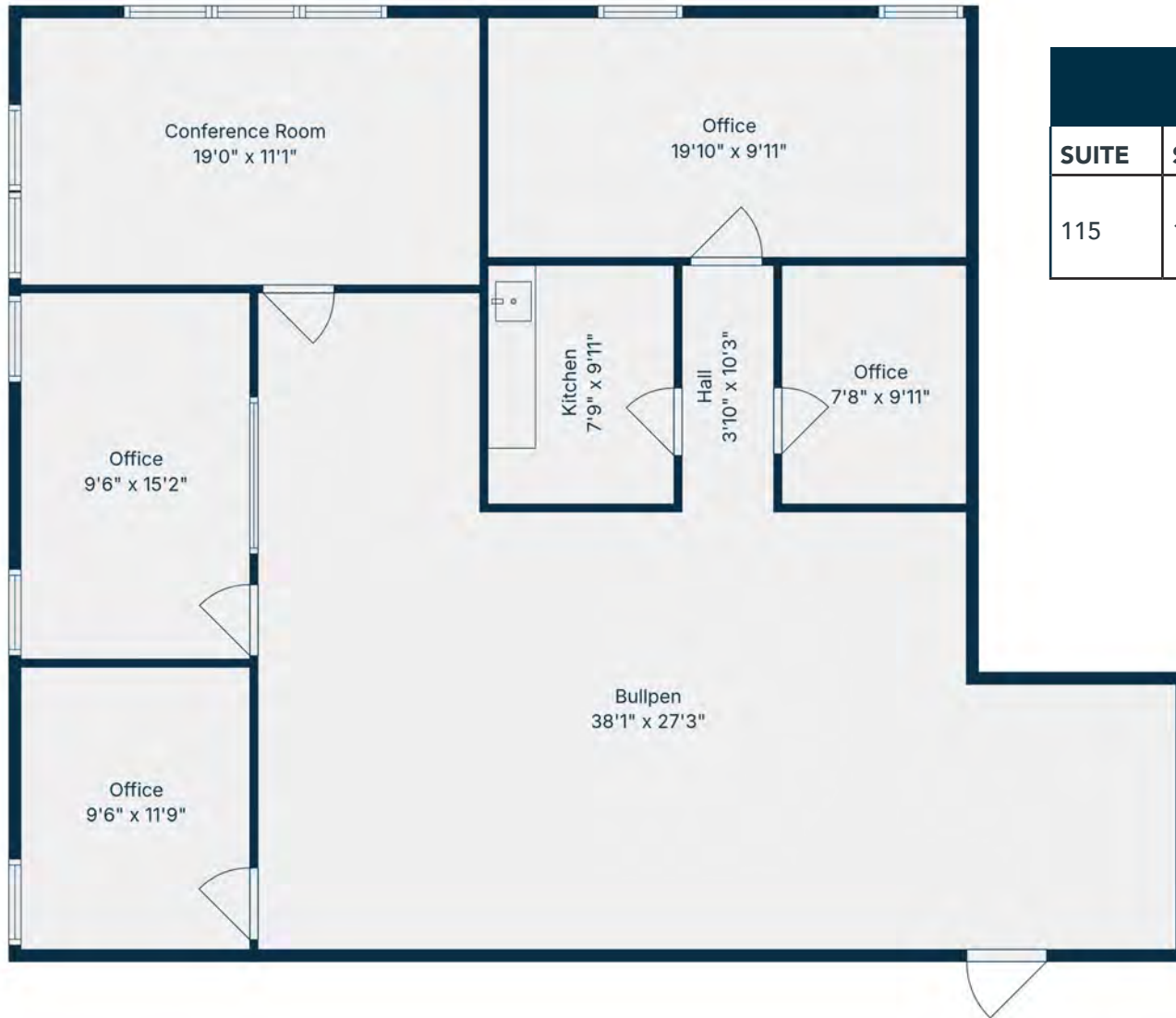
1ST FLOOR AVAILABILITY

SUITE	SIZE	RATE	DESCRIPTION
115	1,630 SF	\$1.85 PSF	Open Area, Conference Room, Kitchen, 4 Offices



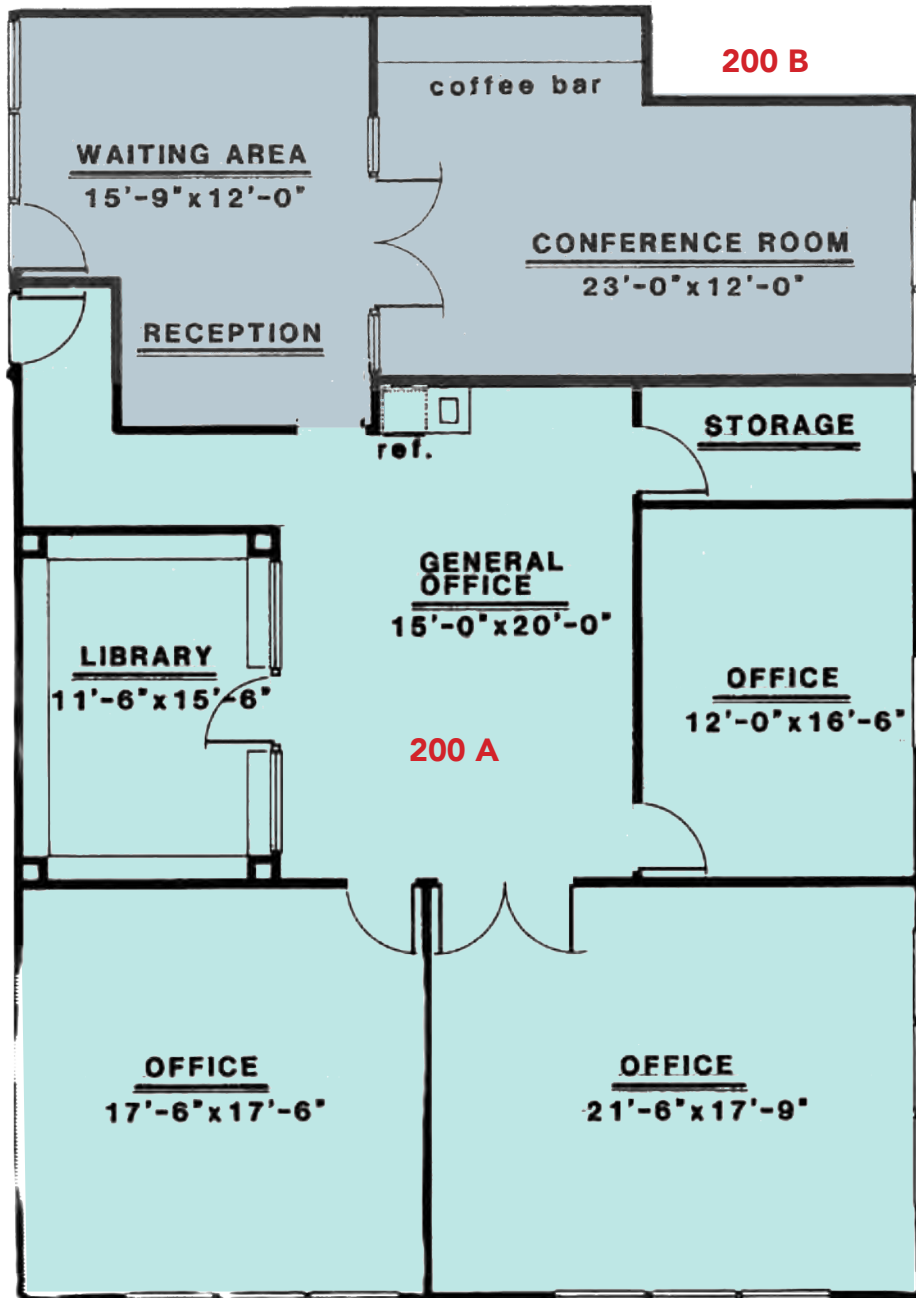
2ND FLOOR AVAILABILITY

SUITE	SIZE	RATE	DESCRIPTION
200 A	1,721 SF	\$1.85 PSF	Contiguous with private offices, kitchen, bullpen
200 B	565 SF	\$1,015/mo	Open work area and large office or conference room
200A/B	2,189 SF	\$1.85 PSF	See Above for Descriptions



1ST FLOOR AVAILABILITY

SUITE	SIZE	RATE	DESCRIPTION
115	1,630 SF	\$1.85 PSF	Open Area, Conference Room, Kitchen, 4 Offices



2ND FLOOR AVAILABILITY

SUITE	SIZE	RATE	DESCRIPTION
200 A	1,721 SF	\$1.85 PSF	Contiguous with private offices, kitchen, bullpen
200 B	565 SF	\$1,015/mo	Open work area and large office or conference room
200A/B	2,189 SF	\$1.85 PSF	See Above for Descriptions

THE COURTYARD

27349 JEFFERSON AVE
TEMECULA, CA 92590

LOCATION MAP



TEMECULA

Population	112,502
Average Household Income	\$138,962 (1 Mile Radius)
Average Household Income	\$140,433 (5 Mile Radius)
Est. Households	57,506 (5 Mile Radius)
Total Businesses	9,828 (5 Mile Radius)

THE COURTYARD

27349 JEFFERSON AVE
TEMECULA, CA 92590

FOR LEASE

PROFESSIONAL OFFICE | MEDICAL SPACES

THE COURTYARD

27349 JEFFERSON AVE
TEMECULA, CA 92590



KYLE FRIED, CCIM, MBA
951.553.0012
kyle@seawaypropertiesCRE.com
Lic # 02200647

EMILY LEVANDUSKI
951.639.4230
emily@seawaypropertiesCRE.com
Lic # 02207533

CRAIG W. WAY
951.237.7866
seawayproperties@aol.com
Lic # 01336376



Seaway Properties Real Estate, Inc.
www.seawaypropertiesCRE.com

No warranty or representation has been made to the accuracy of the foregoing information.
Terms of sale and availability are subject to change or withdrawal without notice. Seaway
Properties Real Estate, Inc. 28545 Old Town Front St. Ste 203, Temecula CA 92590