

2301

EAST RIVERSIDE
BUILDING A

OFFICE | SHOWROOM
SPACE

FOR LEASE



CONVENIENCE
& STYLE
REIMAGINED

SUITES 80 & 90
4,000 SF

DESIGNED BY ARCHITECT MICHAEL HSU



MARK GREINER
Executive Director
+1 512 370 2420
mark.greiner@cushwake.com

MELISSA TOTTEN
Director
+1 512 370 2430
melissa.totten@cushwake.com

PROPERTY HIGHLIGHTS

4,000 SF CLASS A OFFICE/SHOWROOM SPACE

Located within the emerging Riverside corridor, 2301 E Riverside, Building A is a one (1) story office/retail building containing approximately 17,000 SF. These Spaces offer great exterior signage and direct glass storefront access.

LEASE TERMS

Suites 80 & 90 - 4,000 SF

- Available September 1, 2024
- Net Rate - Contact Broker
- OpEx - \$10.51 / RSF / Year + E & J
- Parking - 3.6/1,000 SF Free Surface Spaces

BUILDING & SPACE FEATURES

- Distinctive exterior design with metal and wood accents.
- Quick access to Roy and Ann Butler Hike Trail
- 18' Ceiling Heights
- Exterior Signage Available
- Kitchen
- Zoning: LR-MU-CO-NP



LOCATION, LOCATION, LOCATION!



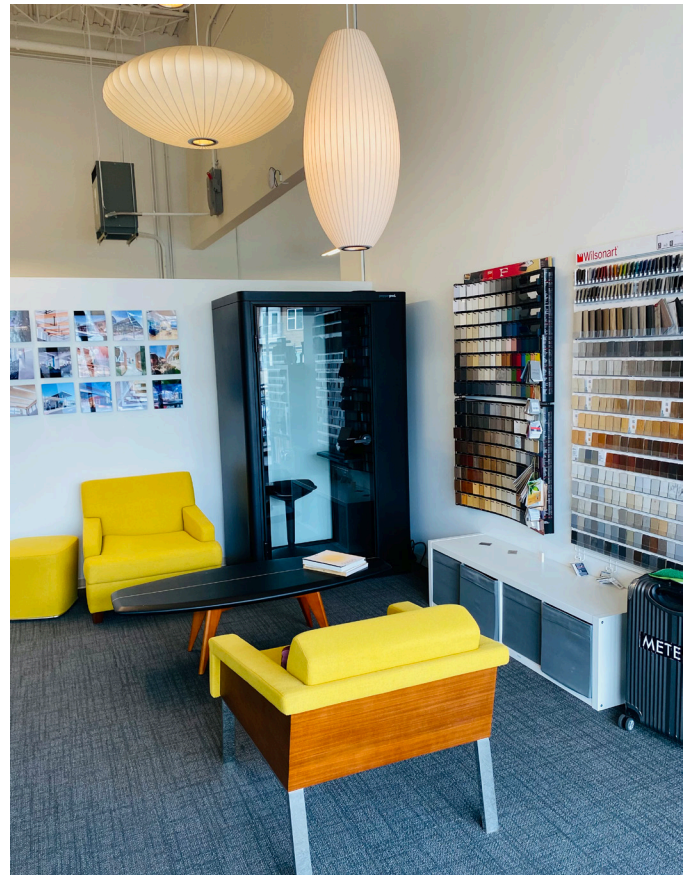
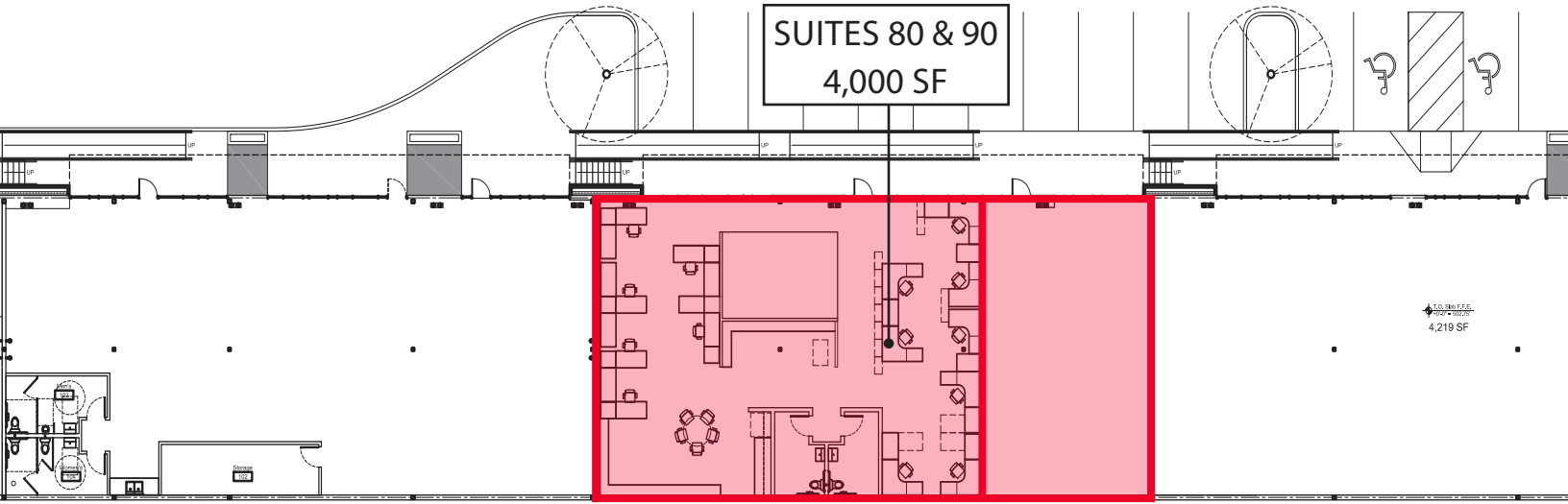
MICHAEL HSU
OFFICE OF
ARCHITECTURE
(MHOA) advocates
a simple, edited
design palette, using
available materials and
techniques to create
unexpected results.
MHOA believes in
the innate beauty of
unadorned natural
materials, carefully
chosen, composed
and crafted.

2301 EAST RIVERSIDE

PHOTOS



FLOOR PLAN



← 2301 EAST RIVERSIDE →

SITE PLAN





2301-A

2301

EAST RIVERSIDE

BUILDING A

CONVENIENCE & STYLE REIMAGINED



**CUSHMAN &
WAKEFIELD**

MARK GREINER
Executive Director
+1 512 370 2420
mark.greiner@cushwake.com

MELISSA TOTTEN
Director
+1 512 370 2430
melissa.totten@cushwake.com