



55 CHRYSTIE

Between Canal Street & Hester Street

The Crossroads of
Chinatown, Soho
& Lower East Side

**COMMERCIAL SPACES
FOR LEASE**



55

CHRYSTIE

INTERESTING FACT

Beastie Boys called 55-59 Chrystie their home, recording studio and party palace in their early career.

KEY COMMENTS

- Move-in ready
- Exposed brick wall throughout, wood floors, exposed ceilings
- Outdoor terrace, potential rooftop access
- Great natural light throughout
- Elevator building

CONTACT: teresa@ngpadvisors.com
917-250-2010



PREMISES

RETAIL – GROUND, CELLAR

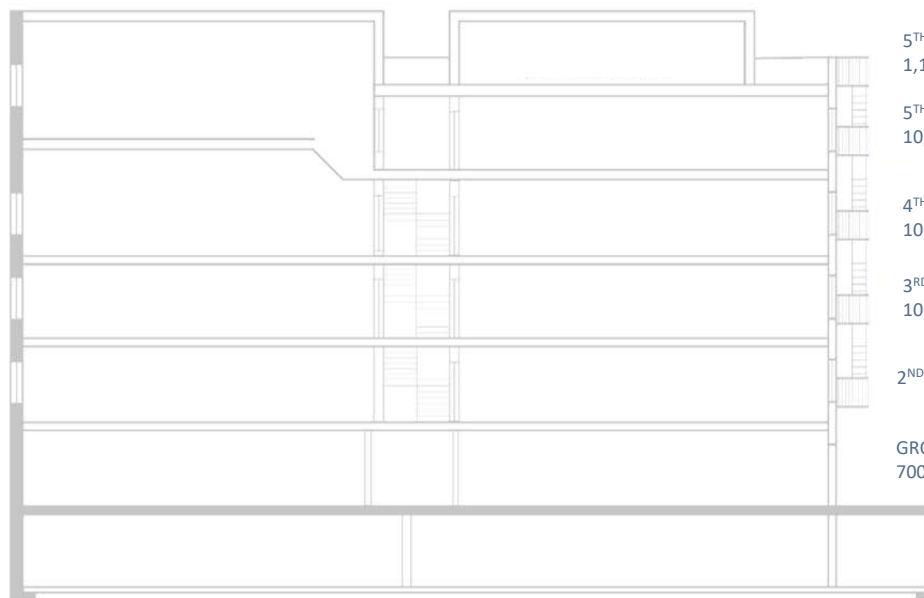
OFFICE – FLOORS 3-5

OUTDOOR SPACE INCLUDED WITH THE 5TH FLOOR

Availability – Immediate

Term – Negotiable

Asking Rent – Upon Request



5TH FLOOR PENTHOUSE / ROOF DECK
1,100 RSF / 1,290 SF

5TH FLOOR / OUTDOOR TERRACE
10,000 RSF / 850 SF

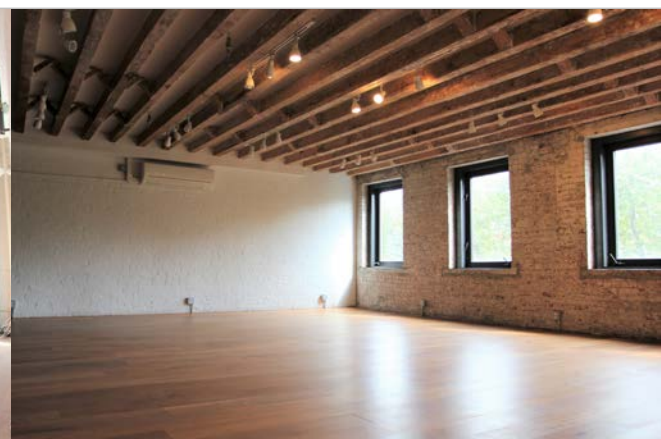
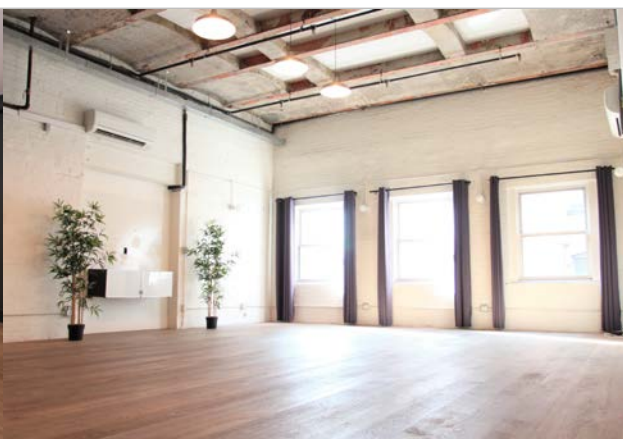
4TH FLOOR
10,000 RSF

3RD FLOOR
10,000 RSF

2ND FLOOR

GROUND FLOOR
700 SF REMAINING

CELLAR
(street access, elevator)
1250 SF REMAINING



LOWER EAST SIDE

- **Diverse, Welcoming Community** – The unpretentious, no-frills attitude of LES draws people from all walks of life, contributing to the neighborhood's unique and eclectic identity. LES provides a combination of authenticity and creative energy which attracts NYC's trendsetting young residents, visitors and TAMI firms.
- **Sara Roosevelt Park**, 7.8-acre park directly across the street, offering basketball courts, a soccer field, community gardens, playgrounds and roller skating rink
- **Vibrant Neighborhood Amenities** – Trendy restaurants and bars, nightlife, art galleries, culture, live music, shopping, immigrant history
- **Essex Crossing** spans 20 acres and features 1,000 residences, 300,000 SF of diverse retail (Trader Joes, Target, Regal Cinema, Essex Market, Market Line), and 350,000 SF of office, and 100,000 SF of green space

BOUTIQUE HOTELS

- Nine Orchard Hotel, 50 Bowery, 11 Howard, NOMO Soho, Ian Schrager's PUBLIC Hotel, Hotel Indigo, SIXTY LES, CitizenM, Moxy, Sister City by Ace Hotels, Crosby Street Hotel all within immediate walking distance

CONVENIENT ACCESS

- Located at the foot of the Manhattan Bridge leading to Downtown Brooklyn
- Subway lines include Grand Street B/D and Canal Street's 6/N/Q/R/W/J/Z
- Bike path along Chrystie Street, a two-way street turning into Second Avenue

