



CHURCH FACILITY AVAILABLE FIRST CHRISTIAN CHURCH

PROPERTY TYPE: **SPECIALTY USE - CHURCH**

AVAILABLE: **APPROX. 26,021 SF***

SALE PRICE: **\$2,200,000 (\$84.55/SF)**

LOT SIZE: **2.41 ACRES**

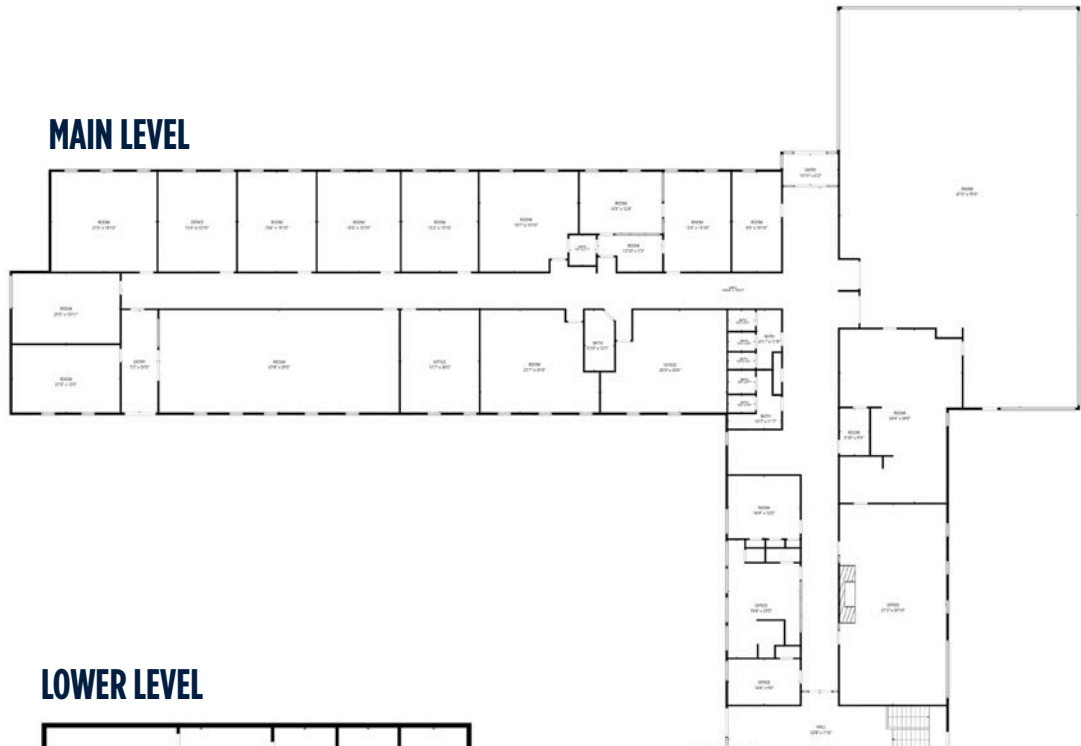
YEAR BUILT: **1962**

* **SOURCE: Weld County Assessor Records**
(Includes finished basement)

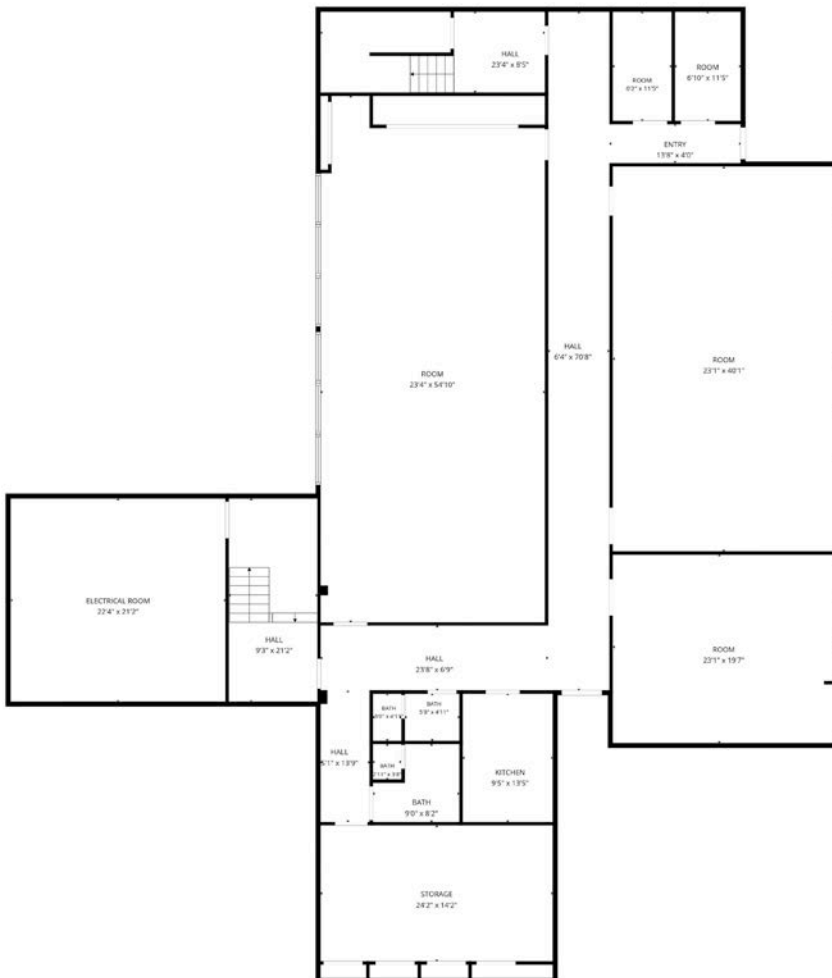
FEATURES:

- Existing church facility in central Greeley
- Beautiful sanctuary with occupancy capacity of 590 people
- Large fellowship hall with attached kitchen
- Numerous classrooms, offices, and meeting rooms
- 85 parking spaces with ability to expand
- Corner location on major street (23rd Avenue)

MAIN LEVEL



LOWER LEVEL



EXTERIOR PHOTOS



EXTERIOR REAR VIEW OF SANCTUARY



FOUNTAIN



PLAYGROUND



EXTERIOR PATIO

INTERIOR PHOTO



SANCTUARY INTERIOR

INTERIOR PHOTOS



FELLOWSHIP HALL SEATING AREA



KITCHEN



PRAYER ROOM



SMALL CHAPEL ROOM



CLASSROOM



MEETING ROOM

SITE LOCATION

2230 13TH STREET • GREELEY, CO 80631

20.8

MILES TO LOVELAND

32.2

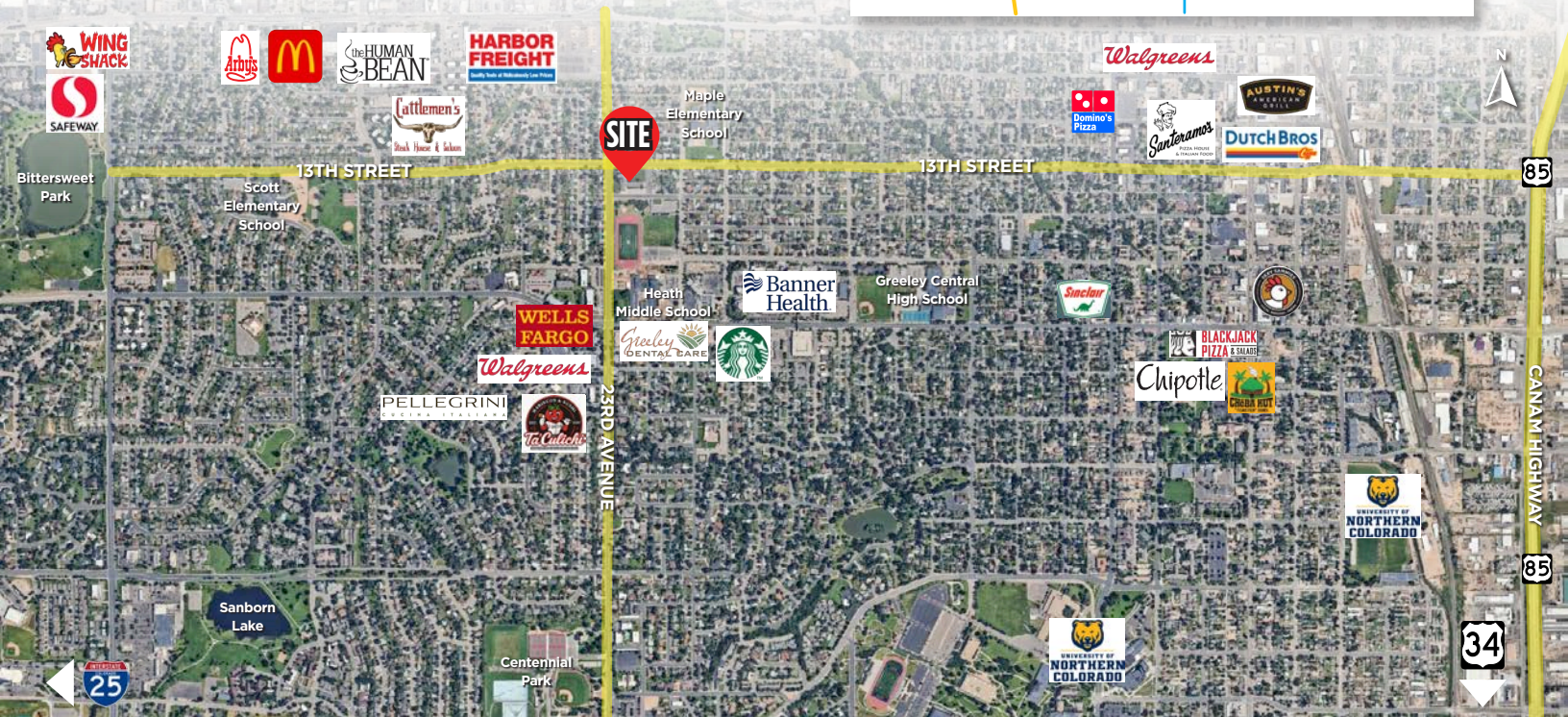
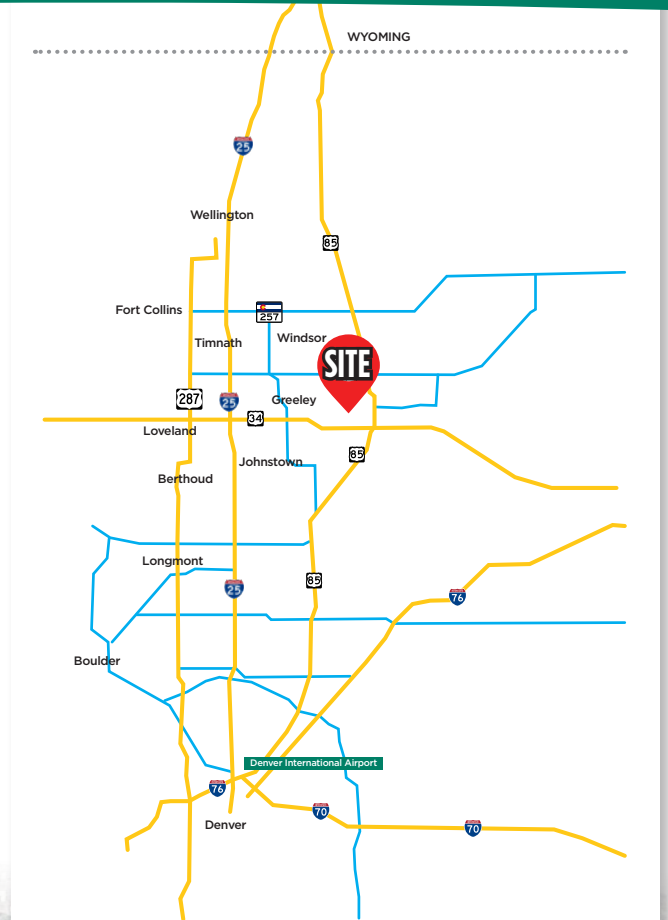
MILES TO FORT COLLINS

53.0

MILES TO CHEYENNE

54.3

MILES TO DENVER INTERNATIONAL AIRPORT



Fort Collins

712 Whaler's Way, Bld. B, Suite 300
Fort Collins, CO 80525
970.229.9900

Loveland

200 E. 7th Street, Suite 418
Loveland, CO 80537
970.593.9900

Greeley

1711 61st Avenue, Suite 104
Greeley, CO 80634
970.346.9900

