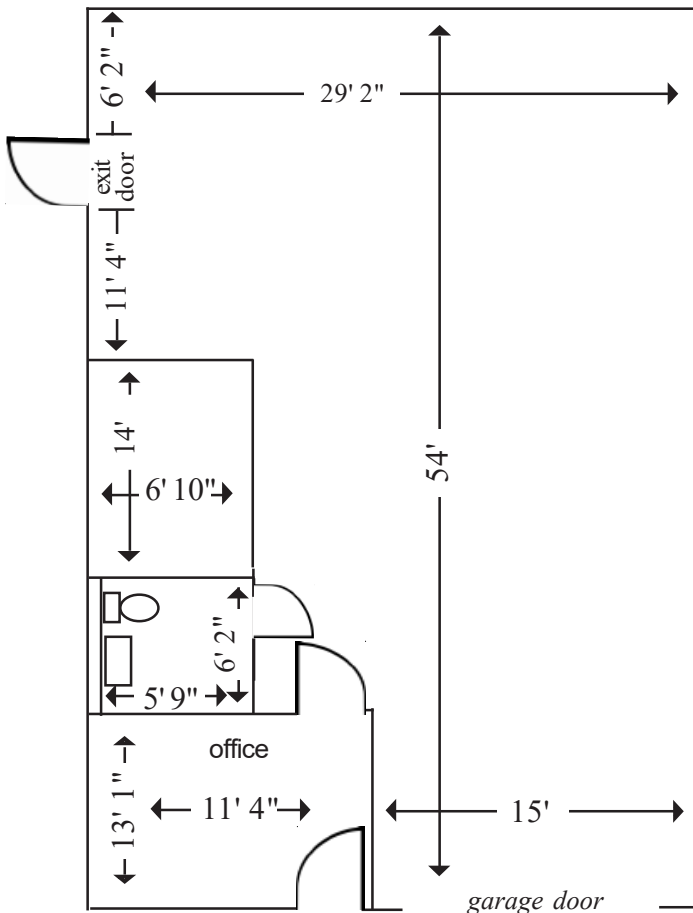


FOR RENT

154 E Lafayette Avenue, Laurel MD
Commercial Warehouse Condominium
City of Laurel zoning I-CS (light industrial)

Email Doris: doris.bw@aol.com

EXCELLENT SPACE FOR SMALL PRODUCTION COMPANY OR OFFICES!



Size & Specs*

Overall approx. 1566 sq. ft.*
10'h x 12w' Overhead Bay Door (drive-in level)
Insulated metal roof
New water heater installed 2019
New Heat & A/C installed 2022
All brick & block construction
5-Inch reinforced concrete floors
2 Dedicated parking spaces

Utilities

Gas Heat *and* Air Conditioned throughout
Dumpster Usage Included
Comcast Internet Available

Rent & Term \$2,466.00

Includes current condo fee and property taxes
Minimum 1 year w/2 month's security deposit

Available December 1, 2023

Amenities: Convenient access to B/W Parkway, Route 1, Route 200, and I-95
Laurel is halfway between Washington, D.C., and Baltimore, Md.
Amtrak station 3/10ths of a mile on Lafayette

No Automotive Facilities Allowed -- No Outdoor Storage Allowed -- Not Enough Parking for a House of Worship
*according to the condominium plat drawing drawing not to scale all measurements are approximate