

# 14944 - 14948

SHOEMAKER AVENUE

SANTA FE SPRINGS, CALIFORNIA

LOS ANGELES COUNTY

4% Procuring Fee  
**PLUS** Broker Bonus!

## For Lease

## 1,960 - 8,331 SF

INSTITUTIONALLY MANAGED | FLEXIBILITY TO GROW IN A PORTFOLIO | DELIVERING UNPRECEDENTED CUSTOMER SERVICE

FOR INFORMATION, CONTACT:



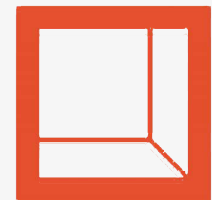
Accelerating success.

CHUCK WILSON  
949-724-5502  
CA License #00947221

ALEX BLECKSMITH, CCIM  
323-278-3132  
CA License #01518130

### Multi-Tenant Industrial Park

- 10' x 12' GL Doors
- 14' Minimum Ceiling Clearance
- Well Appointed Office Area
- Ample Parking
- M-2 Zoning
- Lease Rate: \$1.50 PSF MODIFIED GROSS
- Estimated CAM Charge: \$0.16 PSF



**Rexford  
Industrial**

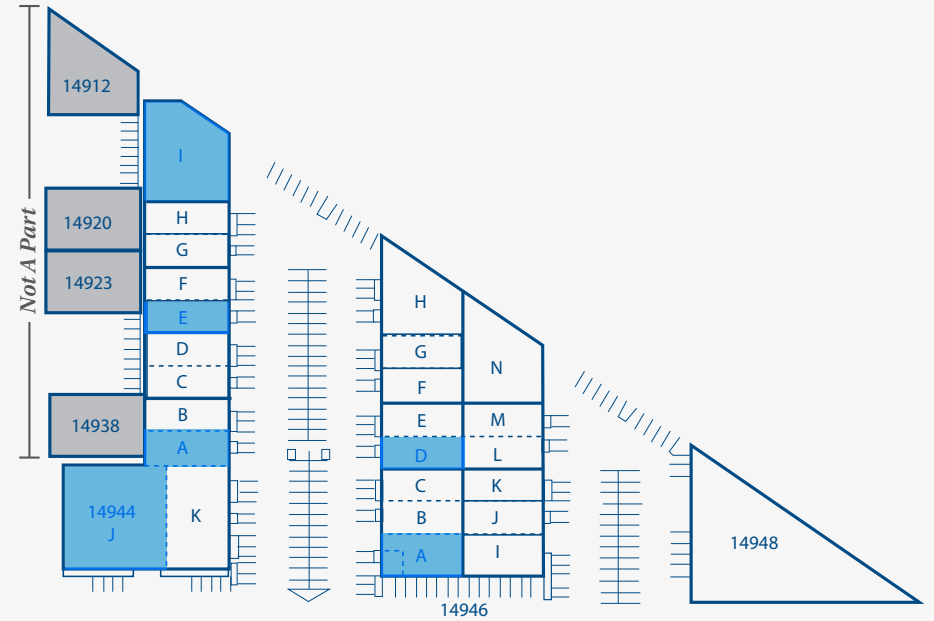


# SHOEMAKER BUSINESS PARK

- High-image business park in ideal Mid-Counties location
- Convenient access to (5) Santa Ana, (605) San Gabriel River, and (91) Artesia Freeways.
- Freeway adjacent at Firestone Boulevard and Shoemaker Avenue
- Suitable for assembly, light manufacturing distribution or service center

Available Units							
Unit	Size	Ofc	Bonus*	Unit	Size	Ofc	Bonus*
14944-A	4,866	340	\$1,000	14946-A	2,380	317	\$1,000
14944-E	2,435	189	\$1,000	14946-D	1,960	218	\$1,000
14944-I	7,022	787	\$2,000				
14944-J	8,331	2,393	\$2,000				

\*Broker bonus is eligible on new 5-year lease signed before 12/31/24.

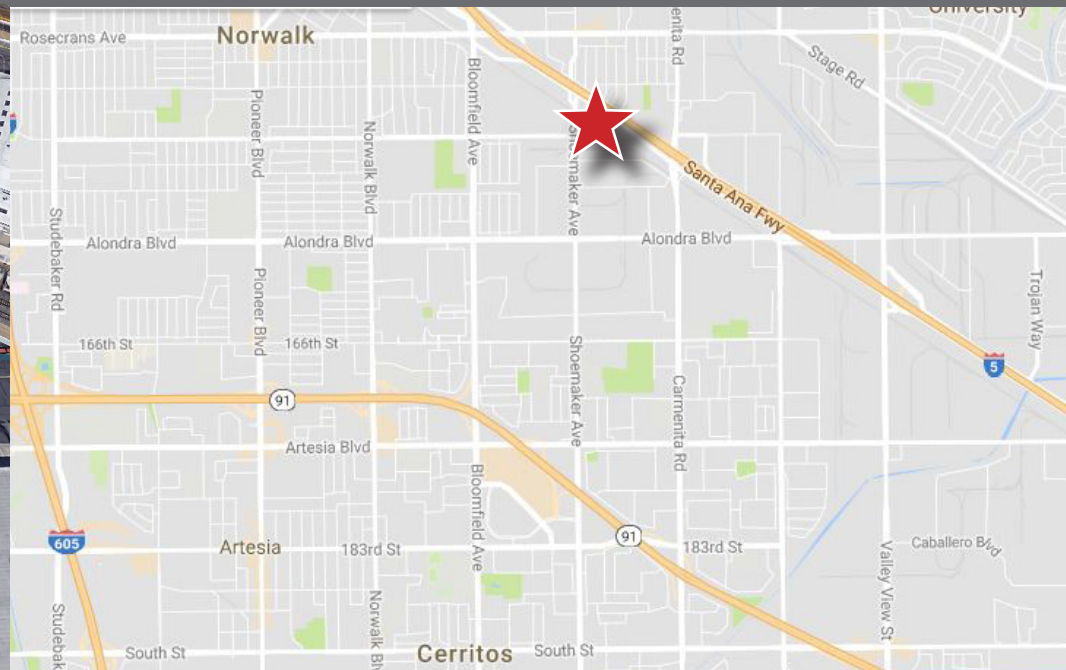


## For Lease

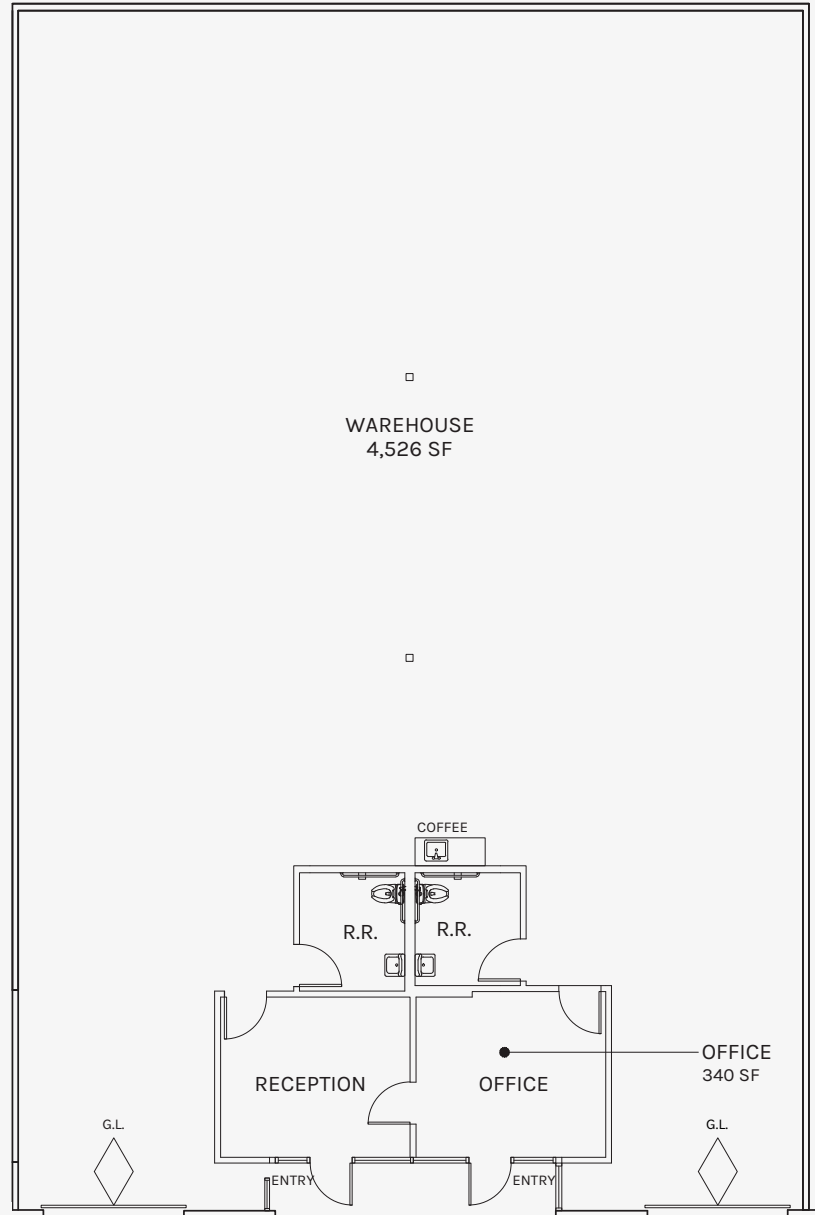
## 1,960 - 8,331 SF

14944 - 14948 SHOEMAKER AVENUE, SANTA FE SPRINGS, CA

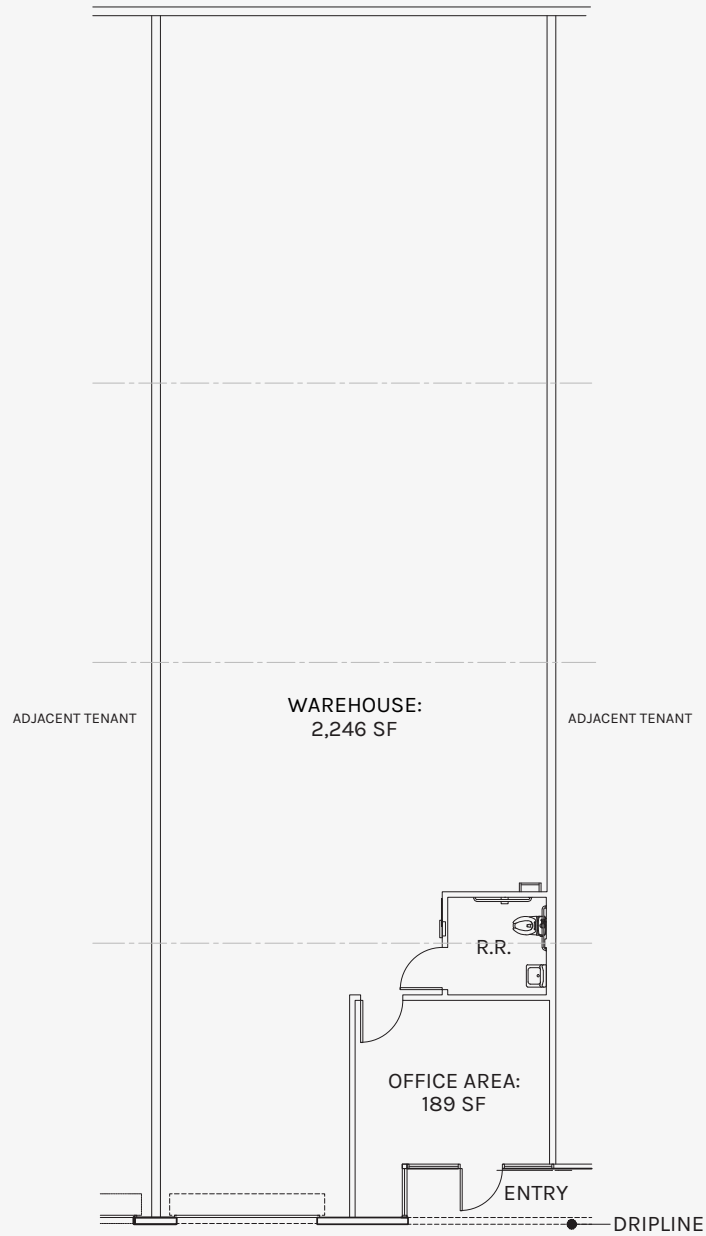
LOS ANGELES COUNTY



14944 Shoemaker Avenue  
Suite A  
Santa Fe Springs, CA 90670

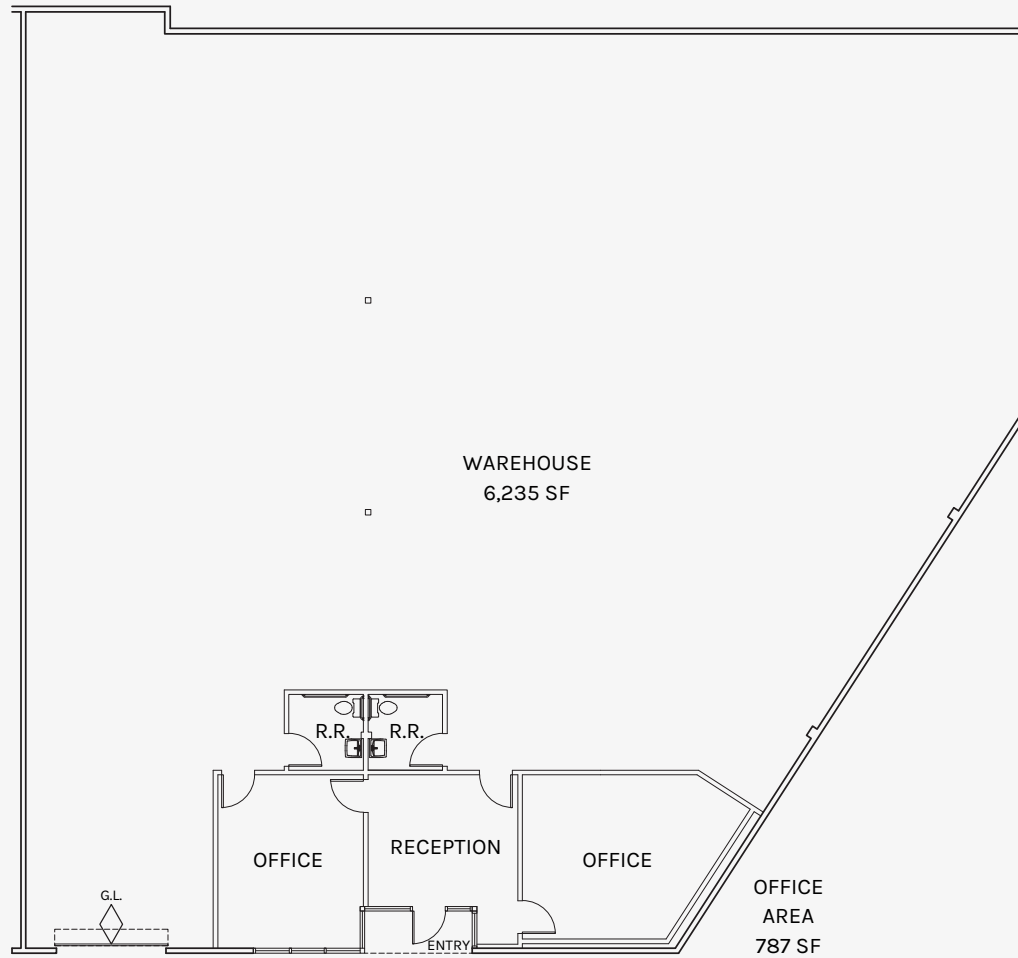


14944 Shoemaker Avenue  
Suite E  
Santa Fe Springs, CA 90670

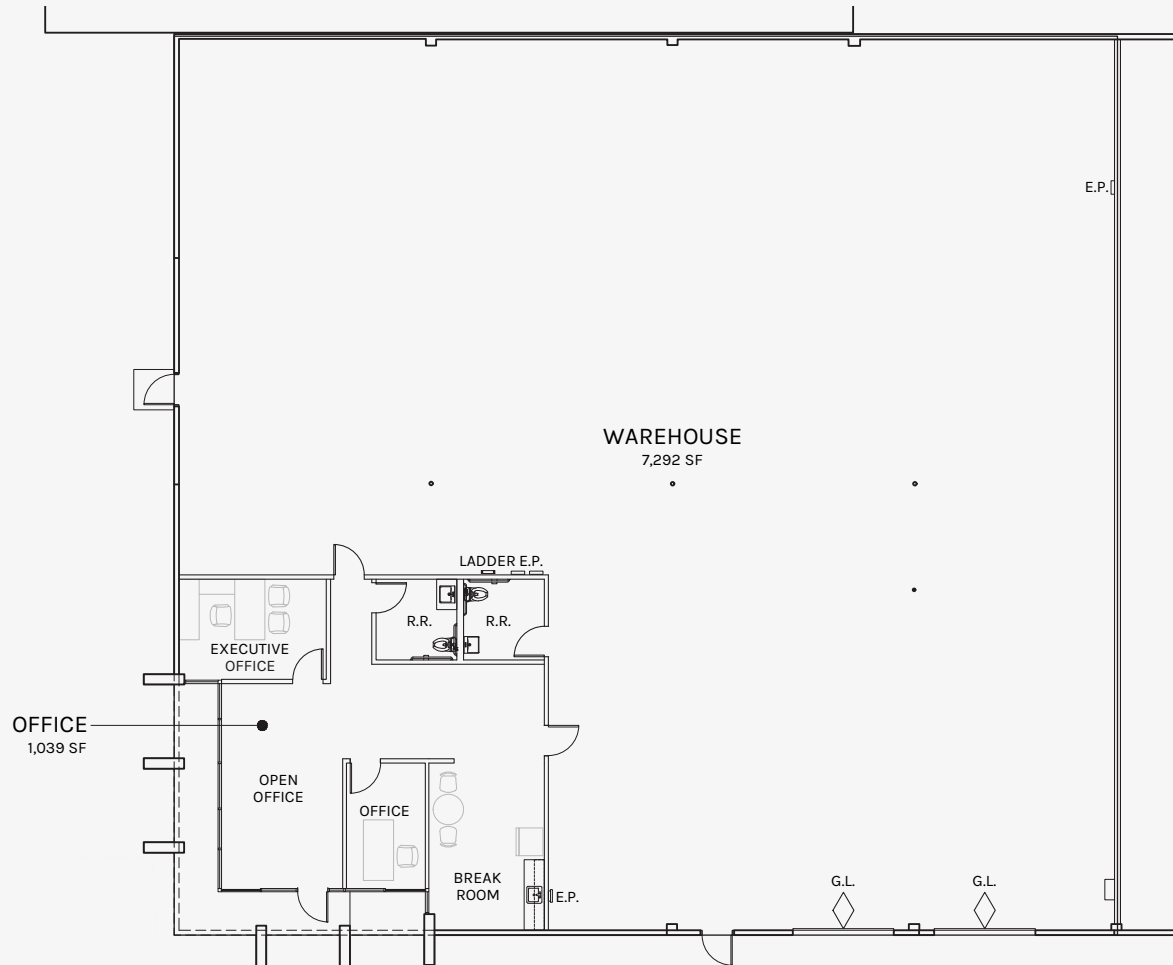


**Rexford  
Industrial**

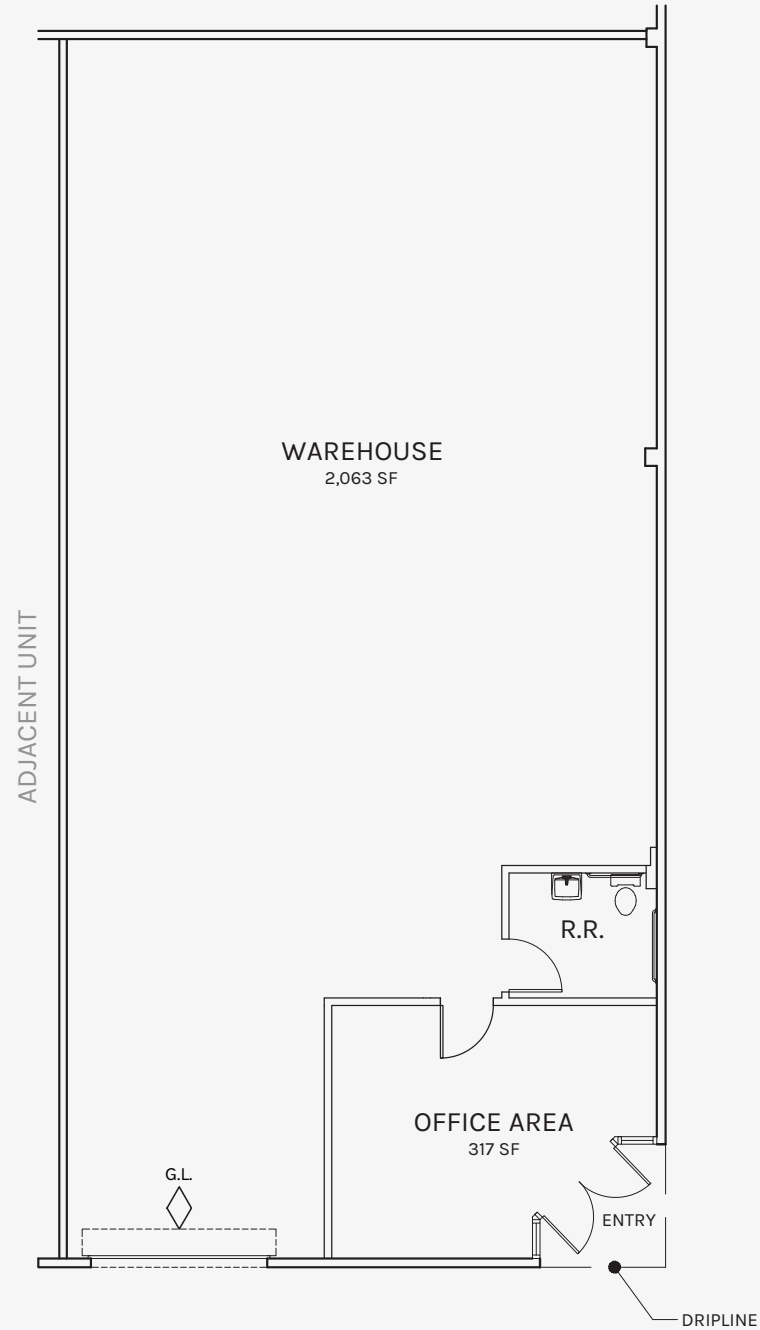
14944 Shoemaker Avenue  
Suite I  
Santa Fe Springs, CA 90670



14944 Shoemaker Avenue  
Suite J  
Santa Fe Springs, CA 90670



14946 Shoemaker Avenue  
Suite A  
Santa Fe Springs, CA 90670



14946 Shoemaker Avenue  
Suite D  
Santa Fe Springs, CA 90670



**Rexford  
Industrial**