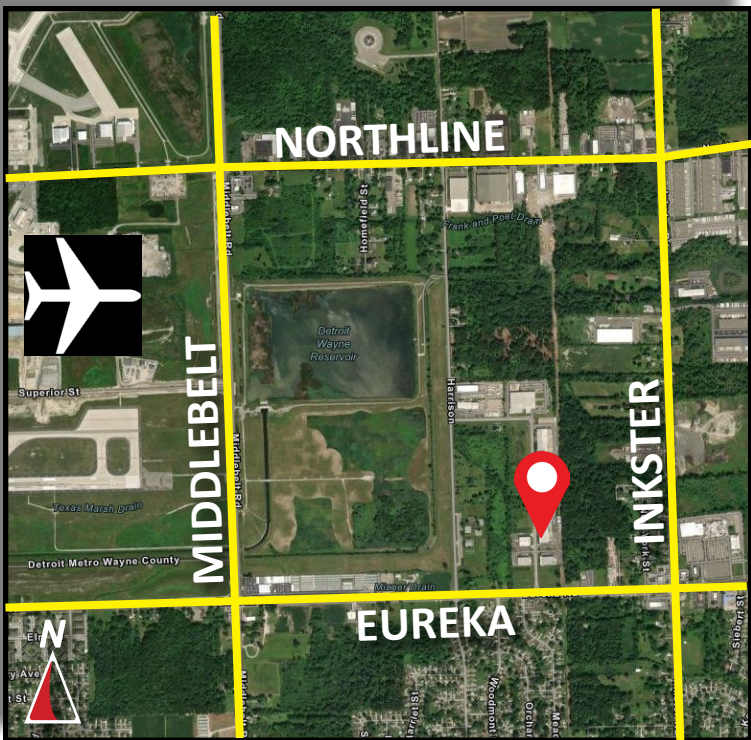


FOR LEASE

14715 5 M Center Drive
 Romulus, Michigan
 14,520 Square Feet



- 14,520 square feet for lease
- Quick access to I-94 and I-275
- Located in the 5M Industrial Park
- Four (4) truckwells and one (1) 12'x14' grade level door
- Fenced yard space with ample parking and great truck turning radius
- 21'-24' clear height
- Fully sprinklered warehouse
- Dispatch office, drivers room and break room
- Immediate occupancy
- Lease Rate: \$8.50 per square foot / \$10,285 per month NNN

Burger & Company

Paul Burger, SIOR
 President
 Cell: 586.202.7800
 paul@burgercollc.com

Nicolo Burger, SIOR, CCIM
 Vice President
 Cell: 810.224.8103
 nic@burgercollc.com

248.536.2888
 www.burgercollc.com
 38345 W. 10 Mile Road, Suite 100
 Farmington Hills, MI 48335

Information contained herein is deemed to be reliable but is not guaranteed and may be withdrawn at any time.

FOR LEASE

14715 5 M Center Drive
Romulus, MI



BUILDING SPECIFICATIONS

Location	5 M Industrial Park	Total Building Square Feet	29,040 SF
County	Wayne	Square Feet Available	14,520 SF
Zoning	M-1 Light Industrial	Office Square Feet	1,880 SF
Year Built	1991	Warehouse Square Feet	12,640 SF
Construction	Steel stran	Roof	Steel stran
Clear Height	21' - 24'	Grade Level Doors	One (1) 12'x14'
Cranes	No	Dock Doors	Four (4)
Lighting	LED	Power	3 Phase / 208
Heating	Radiant	Sprinklers	Yes
Warehouse A/C	No	Railroad	No
Buss Duct	No	Signage	Available
Parking	Fenced Yard	Restrooms	Three (3)
Lot Dimensions	In Common	Freestanding	Duplex

Description

- 14,520 square feet for lease
- Quick access to I-94 and I-275
- Located in the 5M Industrial Park
- Four (4) truckwells and one (1) 12'x14' grade level door
- Fenced yard space with ample parking and great truck turning radius
- 21'-24' clear height
- Fully sprinklered warehouse
- Dispatch office, drivers room and break room
- Immediate occupancy

Lease Rate	\$8.50 PSF
Monthly	\$10,285.00
Net Charges	\$2.71 / \$3,279.10 per month
Availability	Immediate Occupancy



Paul Burger, SIOR
President
Cell: 586.202.7800
paul@burgercollc.com

Nicolo Burger, SIOR, CCIM
Vice President
Cell: 810.224.8103
nic@burgercollc.com

248.536.2888
www.burgercollc.com
38345 W. 10 Mile Road, Suite 100
Farmington Hills, MI 48335

Information contained herein is deemed to be reliable but is not guaranteed and may be withdrawn at any time.

FOR LEASE

14715 5 M Center Drive
Romulus, MI

WAREHOUSE IMAGES



OFFICE IMAGES



Burger

& COMPANY

Paul Burger, SIOR
President
Cell: 586.202.7800
paul@burgercollc.com

Nicolo Burger, SIOR, CCIM
Vice President
Cell: 810.224.8103
nic@burgercollc.com

248.536.2888
www.burgercollc.com
38345 W. 10 Mile Road, Suite 100
Farmington Hills, MI 48335

Information contained herein is deemed to be reliable but is not guaranteed and may be withdrawn at any time.

FOR LEASE

14715 5 M Center Drive
Romulus, MI

GRADE LEVEL DOOR



TRUCKWELLS



Burger

& COMPANY

Paul Burger, SIOR
President
Cell: 586.202.7800
paul@burgercollc.com

Nicolo Burger, SIOR, CCIM
Vice President
Cell: 810.224.8103
nic@burgercollc.com

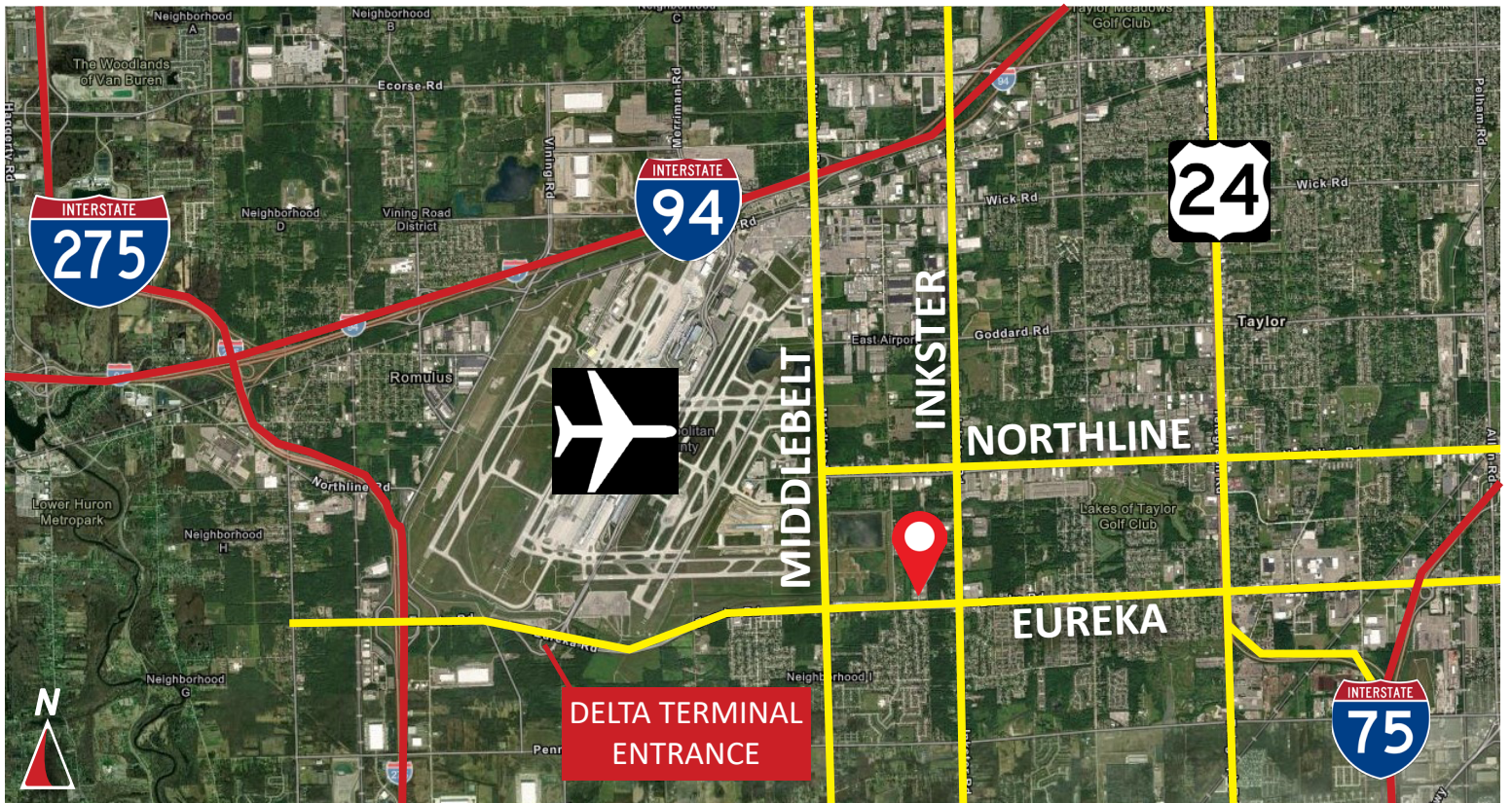
248.536.2888
www.burgercollc.com
38345 W. 10 Mile Road, Suite 100
Farmington Hills, MI 48335

Information contained herein is deemed to be reliable but is not guaranteed and may be withdrawn at any time.

FOR LEASE

14715 5 M Center Drive
Romulus, MI

AERIAL / LOCATION MAPS



Burger
& COMPANY

Paul Burger, SIOR
President
Cell: 586.202.7800
paul@burgercollc.com

Nicolo Burger, SIOR, CCIM
Vice President
Cell: 810.224.8103
nic@burgercollc.com

248.536.2888
www.burgercollc.com
38345 W. 10 Mile Road, Suite 100
Farmington Hills, MI 48335

Information contained herein is deemed to be reliable but is not guaranteed and may be withdrawn at any time.