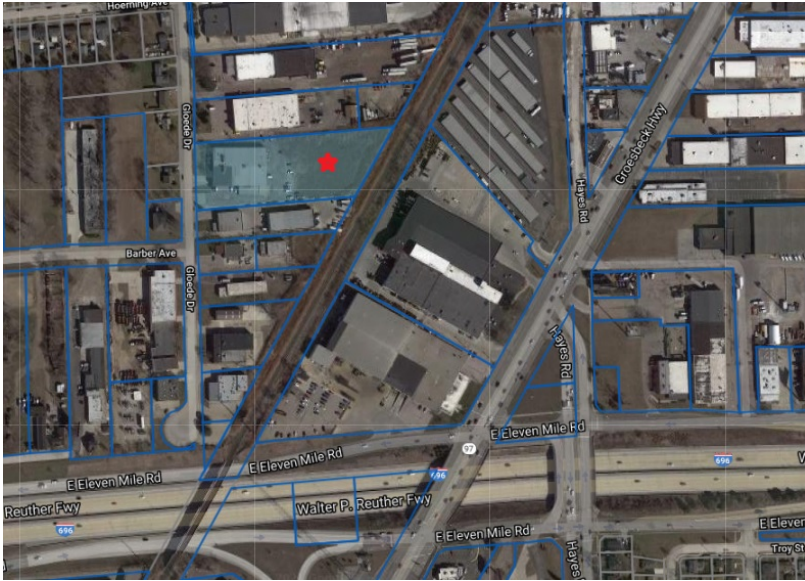


## BTS for Marijuana Grow Facility

27256 Gloede Warren, MI 48088



### Pricing Information:

<b>Lease Rate Range:</b>	TBD
<b>Lease Type:</b>	
<b>Sale Price:</b>	N/A
<b>Price per SF:</b>	N/A
<b>Expenses psf:</b>	TBD

### Property Details:

<b>Total Building Area:</b>	19,297 sf
<b>Min/Max Available:</b>	19,297 sf
<b>Office Area:</b>	
<b>Property Type:</b>	General Industrial
<b>Tenancy:</b>	Multi-tenant
<b>Year Built:</b>	
<b>Year Renovated:</b>	
<b>Zoning:</b>	M-2
<b>Site/Parcel Area:</b>	0.00 acres

<b>Parcel ID:</b>	12-13-13-477-002
<b>Parking Description:</b>	
<b>Rail Served:</b>	No
<b>Cranes:</b>	No
<b>Heat:</b>	TBD
<b>Clear Height Min/Max:</b>	TBD
<b>Grade/Dock Doors:</b>	TBD
<b>Sprinkler:</b>	Yes
<b>Power:</b>	TBD

### Comments:

Build to suit for marijuana grow facility.

**Mike Davidson**

248.357.6599

[Mike.Davidson@nmrk.com](mailto:Mike.Davidson@nmrk.com)

