



RETAIL BUILDING AVAILABLE IN THE HEART OF CHIMNEY ROCK VILLAGE

390 MAIN ST | CHIMNEY ROCK, NC 28720

SALE INFORMATION

MARKET CHIMNEY ROCK, NC



390 Main St, Chimney Rock, NC 28720

Restaurant / Retail Building Available

HIGHLIGHTS

- ±6,264 SF commercial building on 0.12 acres
- Landmark former restaurant and bakery property
- Main Street location in downtown Chimney Rock Village
- Across from entrance to Chimney Rock State Park
- Strong visibility and walkable access
- Surrounded by established tourism-oriented businesses
- Rare owner-user or investment opportunity in a high-profile mountain destination



MARKET CHIMNEY ROCK, NC



Located in the heart of Chimney Rock Village, Laura's House at 390 Chimney Rock Road presents a rare opportunity to acquire a well-known commercial property along one of Western North Carolina's most iconic tourism corridors.

The ±6,264 SF building has operated as a successful restaurant and bakery for over two decades, establishing strong recognition with both locals and the steady flow of visitors to Chimney Rock State Park and Lake Lure.

Positioned directly on Main Street, the property benefits from excellent visibility and walkable access within the village's core commercial strip.

Following the impacts of Hurricane Helene in 2024, Chimney Rock is actively rebuilding, with infrastructure restoration, business re-openings, and significant public and private investment driving the recovery. With key access routes restored and a growing number of businesses returning, the area is entering a new phase of revitalization.

This offering presents a compelling opportunity for investors and operators to establish a presence in a supply-constrained, high-traffic mountain destination as it reemerges.















CHIMNEY ROCK RETAILER MAP



Chimney Rock Fire Department

Chimney Rock Smokehouse

Chimney Rock Park Ticket Office

Mountain Traders

390 Main St

Rocky River Ice Cream and Fudge

Willow Creek

FUTURE HOME OF WHISTLE HOP BREWING IN 2026!



Riverwatch Bar & Grill

Bubba O'Leary's General Store

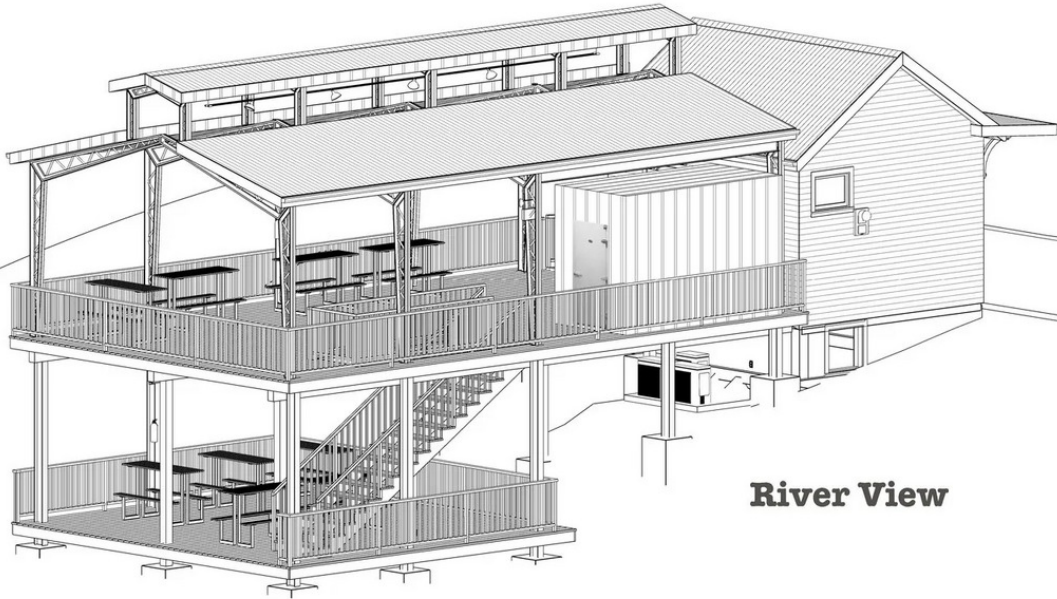
Village Scoop

Chimney Rock at Chimney Rock State Park

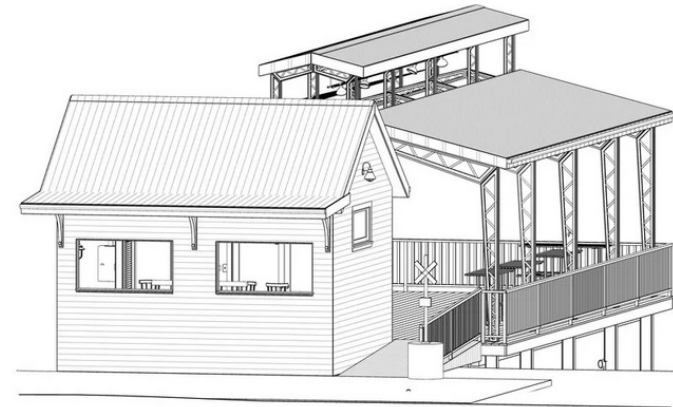
The Riverside Lodge at Chimney Rock

Whistle Hop Brewing Co.

Coming to Chimney Rock in 2026!



River View



Street View



1940s Crossing Signal from Asheville's Rec Park Train will welcome customers at the entrance.



Looking out at the deck from the taproom.



Looking into the taproom from the deck.

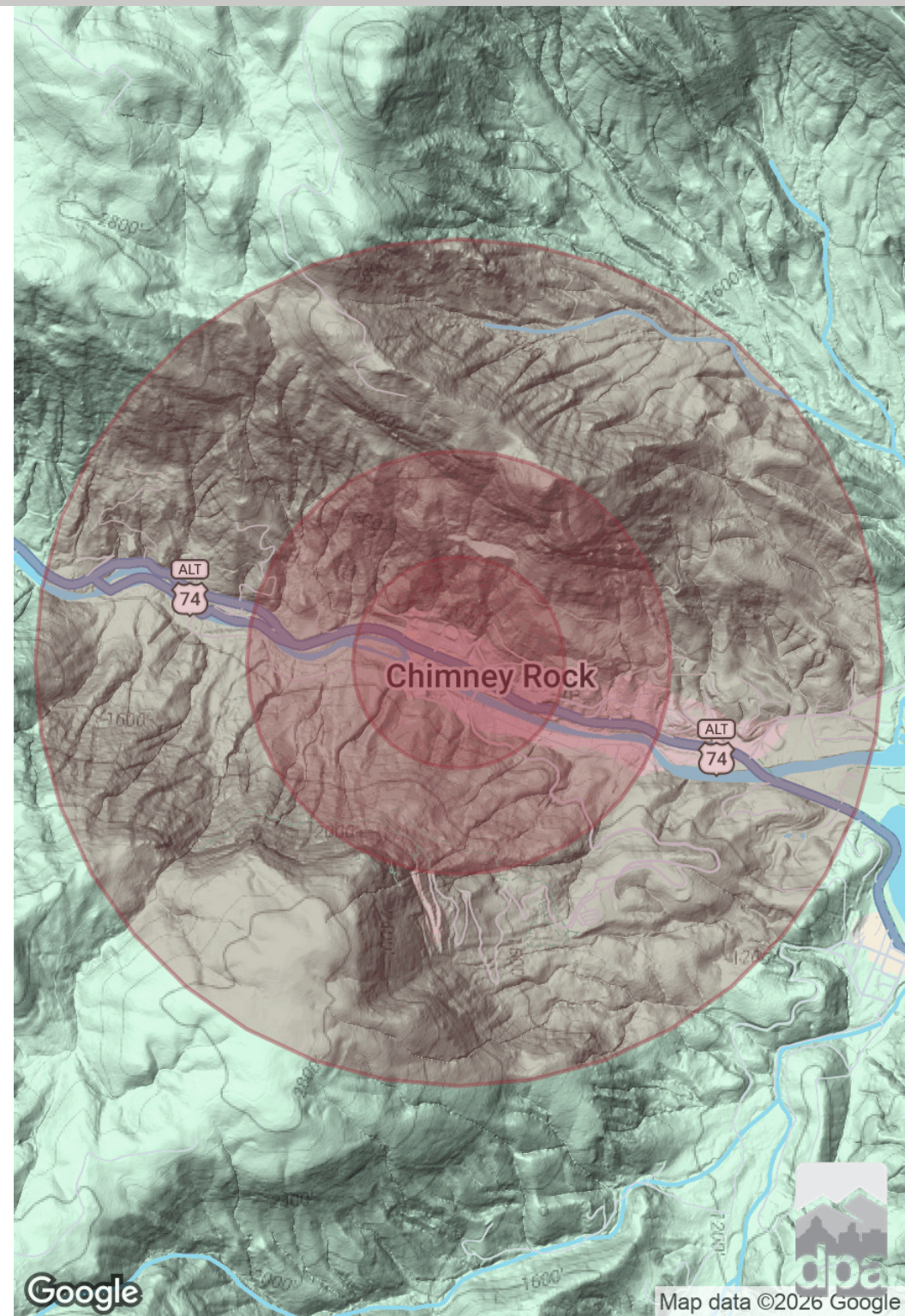
POPULATION **0.25 MILES** **0.5 MILES** **1 MILE**

Total Population	7	32	134
Average Age	70.6	63.4	62.0
Average Age (Male)	68.3	61.4	60.0
Average Age (Female)	73.7	66.4	65.1

HOUSEHOLDS & INCOME **0.25 MILES** **0.5 MILES** **1 MILE**

Total Households	3	17	73
# of Persons per HH	2.3	1.9	1.8
Average HH Income	\$170,309	\$124,414	\$119,410
Average House Value	\$741,598	\$611,660	\$617,906

2023 American Community Survey (ACS)





Dewey
Property
Advisors

Sale & Leasing Contact:
Scott Raines, CCIM | NC #226165
Scott.Raines@deweypa.com

Dewey Property Advisors
1 Page Avenue
Asheville, NC 28801
Office: 828.548.0090
Cell: 828.551.0087
www.deweypa.com