

*PHOTO SHOWN FOR ILLUSTRATION PURPOSES ONLY



STATION YARDS



“AT STATION YARDS, THE BEST OF LONG ISLAND IS STEPS AWAY.”

70,000 square feet of brand-new retail space in a new mixed-use development that is steps away from the Ronkonkoma Long Island Rail Road, Long Island Expressway and Long Island MacArthur Airport.

Situated in the geographic center of Long Island, Station Yards represents a new standard in transit-oriented living; with equal parts walkability, wellness and connectivity. Experience the local neighborhood fabric or hop on the Long Island Rail Road and head west to the city, or east to the beach.



*PHOTO SHOWN FOR ILLUSTRATION PURPOSES ONLY



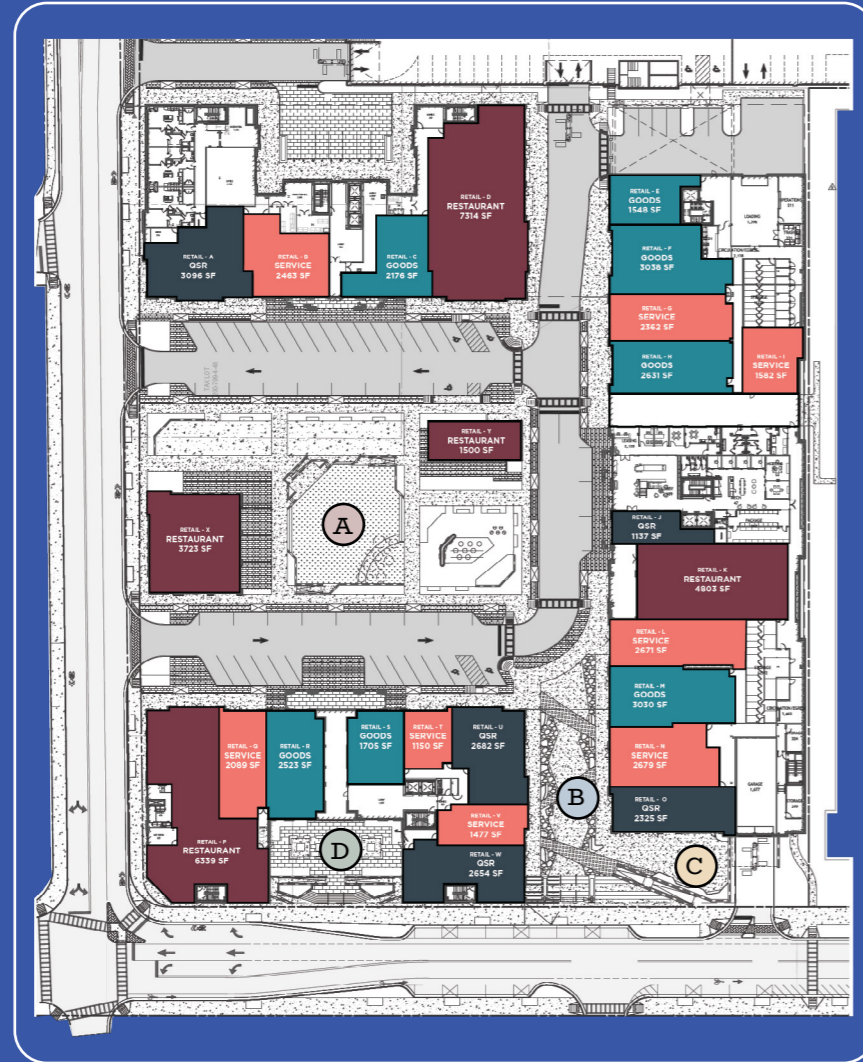
THE SQUARE

The central active hub for the project, and primary home for events and programming



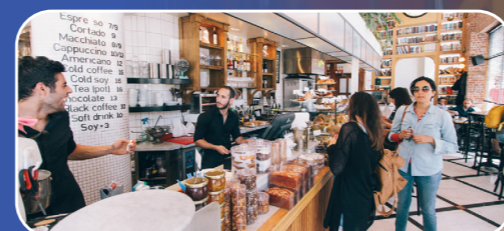
THE PASEO

Gateway and entrance to the project for both residents and commuters from the train station



THE LOUNGE

An active and highly visible node adjacent to quick-service food and easily accessible to the train station



THE GARDEN

An area of respite and calm within easy access of programmed areas for all to enjoy



LOCAL RETAIL & CRAVE-WORTHY DINING

MENU

COFFEE
ESPRESSO
CAPPUCCINO

DRINK
GREEN TEA
JASMINE
HOT MILK
HOT CHOCOLATE
JUICE

Lunch + Cream Tea \$16.80

*PHOTO SHOWN FOR ILLUSTRATION PURPOSES ONLY



STATION YARDS
STOREFRONT
RENDERING



THE SQUARE -
PAD SITE
RESTAURANT
3,700 SQUARE FEET



MAKE STATION YARDS YOUR BUSINESS' NEXT DESTINATION

*PHOTO SHOWN FOR ILLUSTRATION PURPOSES ONLY



Key

- Full Time rail station
- Accessible station
- Part Time rail station
- Major Transit Hub

© 2021 Metropolitan Transportation Authority

Area Demographics



	Total Population	Median HH Income	Average HH Income
1 Mile	10,418	\$114,567	\$140,310
3 Miles	84,661	\$114,369	\$144,794
5 Miles	224,856	\$114,400	\$146,321

The center's population income is 25% above the immediate area's demographic figures.

EASILY ACCESSIBLE LOCATION

The Ronkonkoma Long Island Rail Road line averages 17,000 riders per day making Ronkonkoma the busiest train station in Suffolk County and one of the busiest on Long Island. Long Island Rail Road riders have the option of the 65-minute express train from Ronkonkoma to Penn and Grand Central Stations. Riders will also have service available to the new UBS Arena on New York Islander game days.

The ease of access at Station Yards will draw shoppers, diners, workers, and visitors from all over Long Island and beyond, situated immediately off Exit 60 of the Long Island Expressway and adjacent to the Long Island MacArthur Airport.



Ronkonkoma

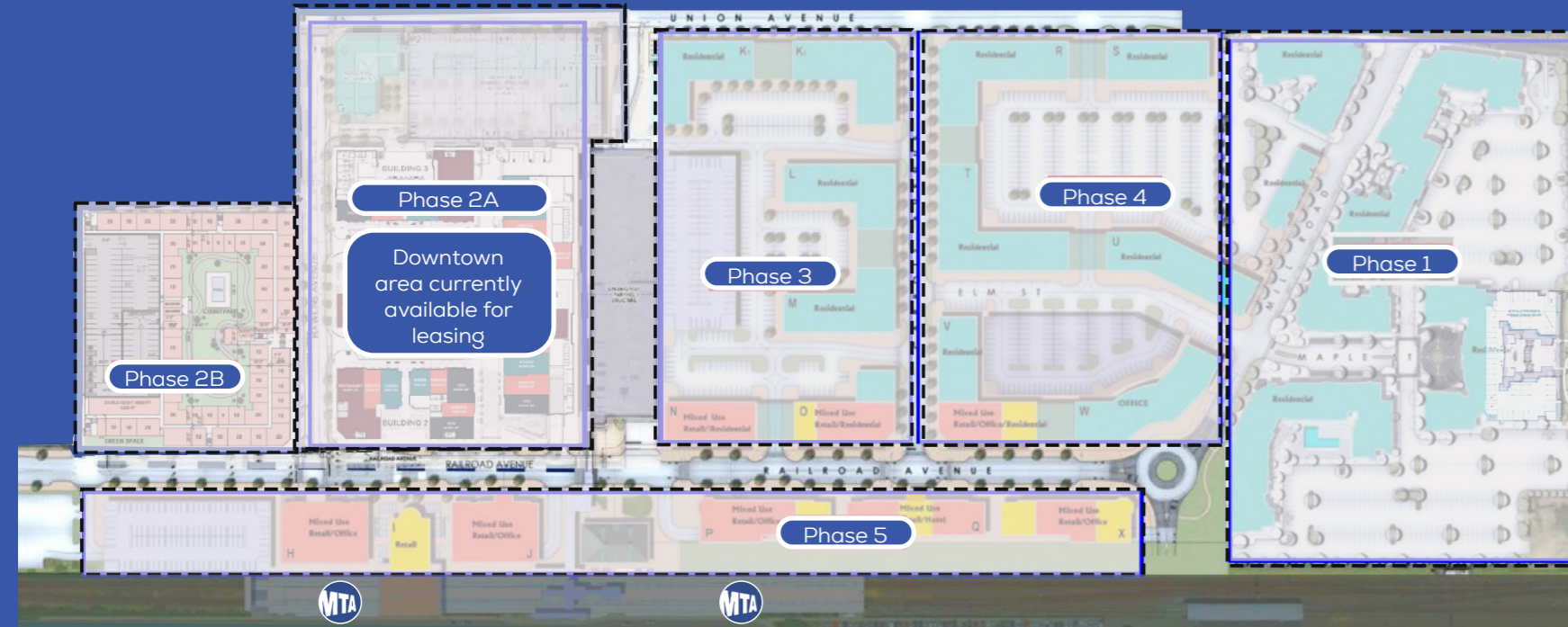
STATION YARDS PHASING PLAN

Total Density Plan for Station Yards

195,000 SF: RETAIL SPACE

360,000 SF: OFFICE SPACE

1,450: RESIDENTIAL UNITS



This uniquely advantageous location offers potential retailers an unrivaled opportunity to help bring the best of Long Island to life for commuters, visitors, and thousands of new residents in the community of Station Yards. Total investment in the Station Yards project will be north of 1 Billion Dollars.





STATION YARDS

Maria Valanzano

Vice President
516 284 3440
maria.valanzano@colliers.com

Steven D'Orazio

Vice President
516 284 3431
steven.dorazio@colliers.com

Anjee Solanki

Nat'l Director, Retail Services | Practice Groups, US
415 288 7871
anjee.solanki@colliers.com

Jake Horowitz

Associate Vice President
212 716 3798
jake.horowitz@colliers.com

No representation is made as to the accuracy of the information furnished herein and same is submitted subject to errors, omissions, change of prices, rental, or other conditions, prior sale, lease, sublease, and/or withdrawal without notice. While every attempt is made to ensure accuracy, the [oor plan]s] is for guidance only. The measurements, dimensions, specifications, and other data shown are approximate and may not be to scale. We assume no responsibility for the accuracy of the [oor plan]s] or for any action taken in reliance thereon. The [oor plan]s] do not create any representation, warranty or contract. All parties should consult a professional, such as an architect, to verify the information contained herein. The furnishing of this information shall not be deemed a hiring. A procuring Broker shall look to its purchaser for a commission in connection with the transaction and our principal

