

For Lease

The Bridges at Victorian Square



1125 & 1130 Avenue of the Oaks
Sparks, NV 89431

Ian Cochran, CCIM
Partner
775.225.0826
icochran@logicCRE.com
B.045434.LLC

Greg Ruzzine, CCIM
Partner
775.450.5779
gruzzine@logicCRE.com
BS.0145435

Point of contact

Grace Keating
Associate
775.870.7806
gkeating@logicCRE.com
S.0198962

Listing Snapshot



Negotiable
Lease Rate



± 2,063 - 3,091 SF
Available Square Footage



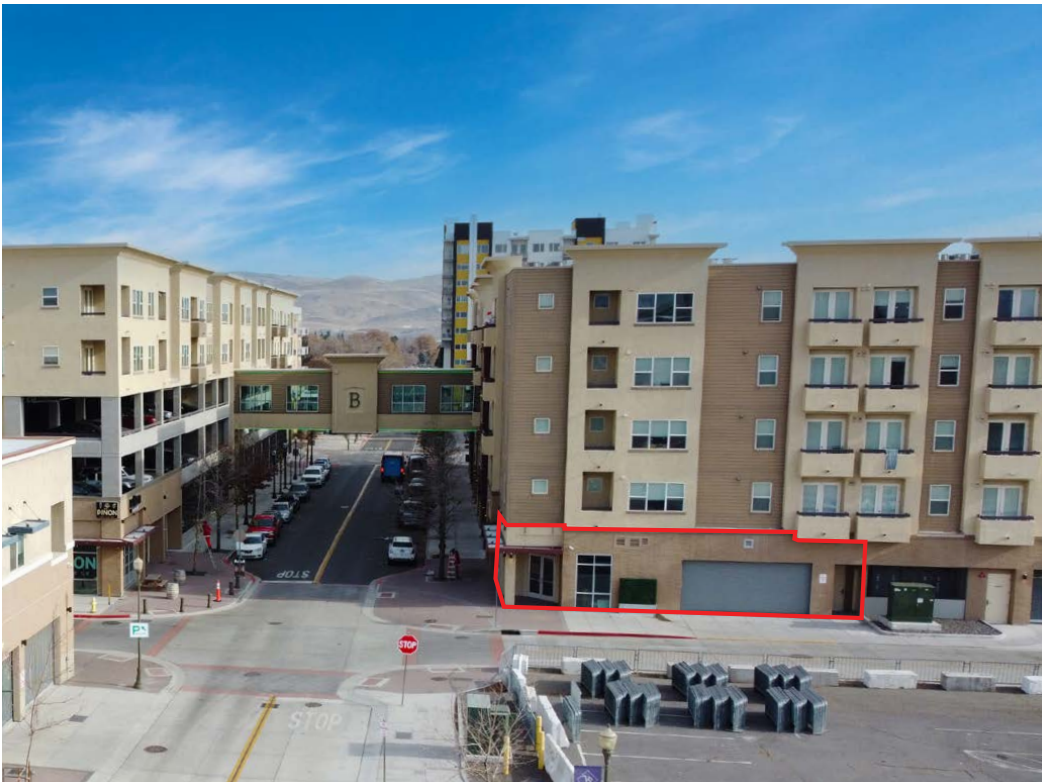
\$0.56 PSF
Estimated Lease Expense

Property Highlights

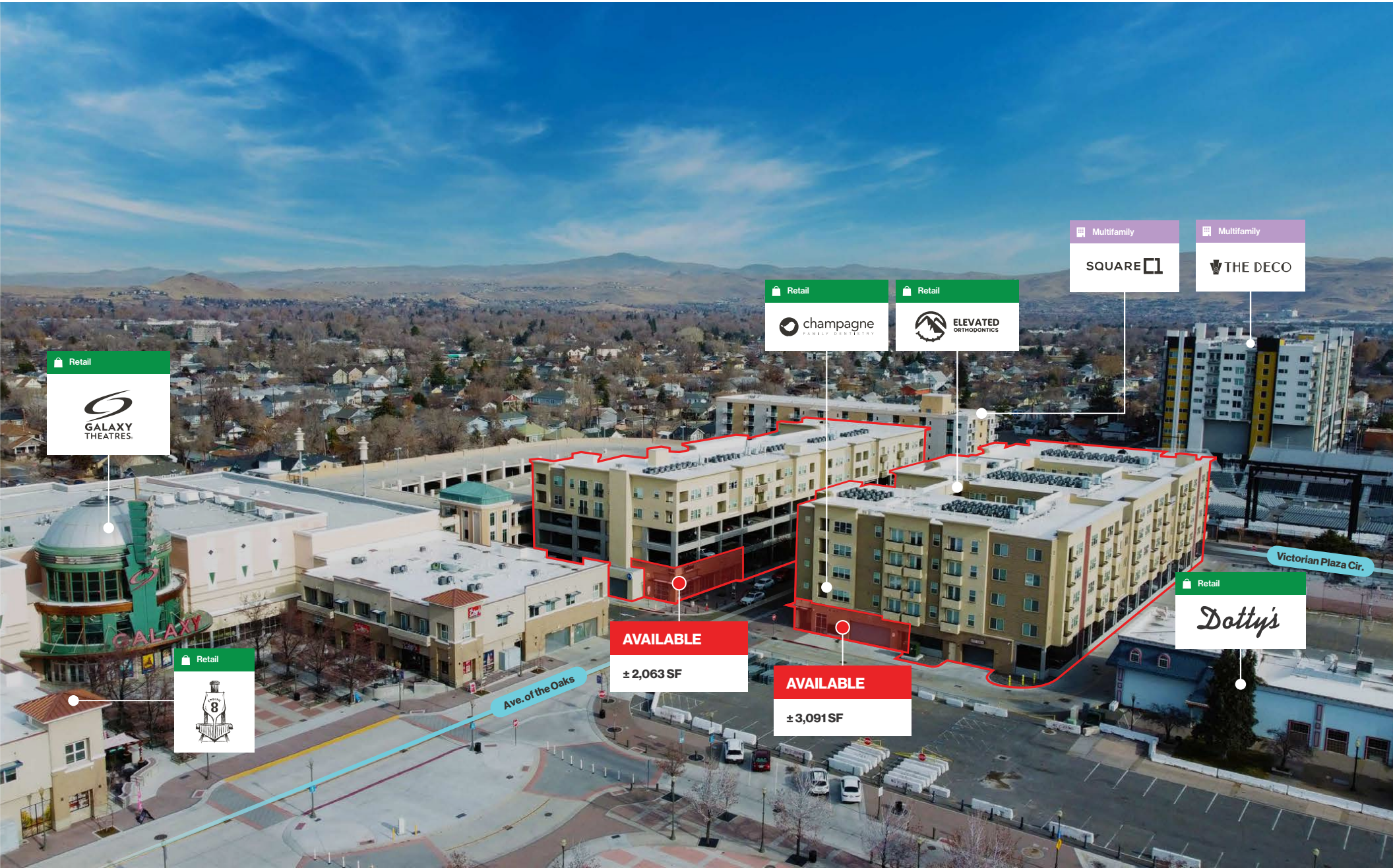
- Ground-floor retail space at The Bridges at Victorian Square
- Turn-key ± 2,063 SF bar/lounge space with private outdoor patio
- Southern vacancy in gray-shell delivery condition to accommodate a variety of users
- Grease interceptor access in place for restaurant user
- Built-in clientele with 194 apartment units located on site and over 650 apartment units within a 0.25-mile radius
- Neighboring tenants include Engine 8 Urban Winery, Champagne Dentistry, Elevated Orthodontics, and Galaxy Theaters
- Daytime population over 23,965 with 980 businesses within a 1-mile radius

Demographics

	1-mile	3-mile	5-mile
2025 Population	17,221	111,135	245,987
2025 Average Household Income	\$74,362	\$80,753	\$93,616
2025 Total Households	7,716	44,897	100,687







Site Plan

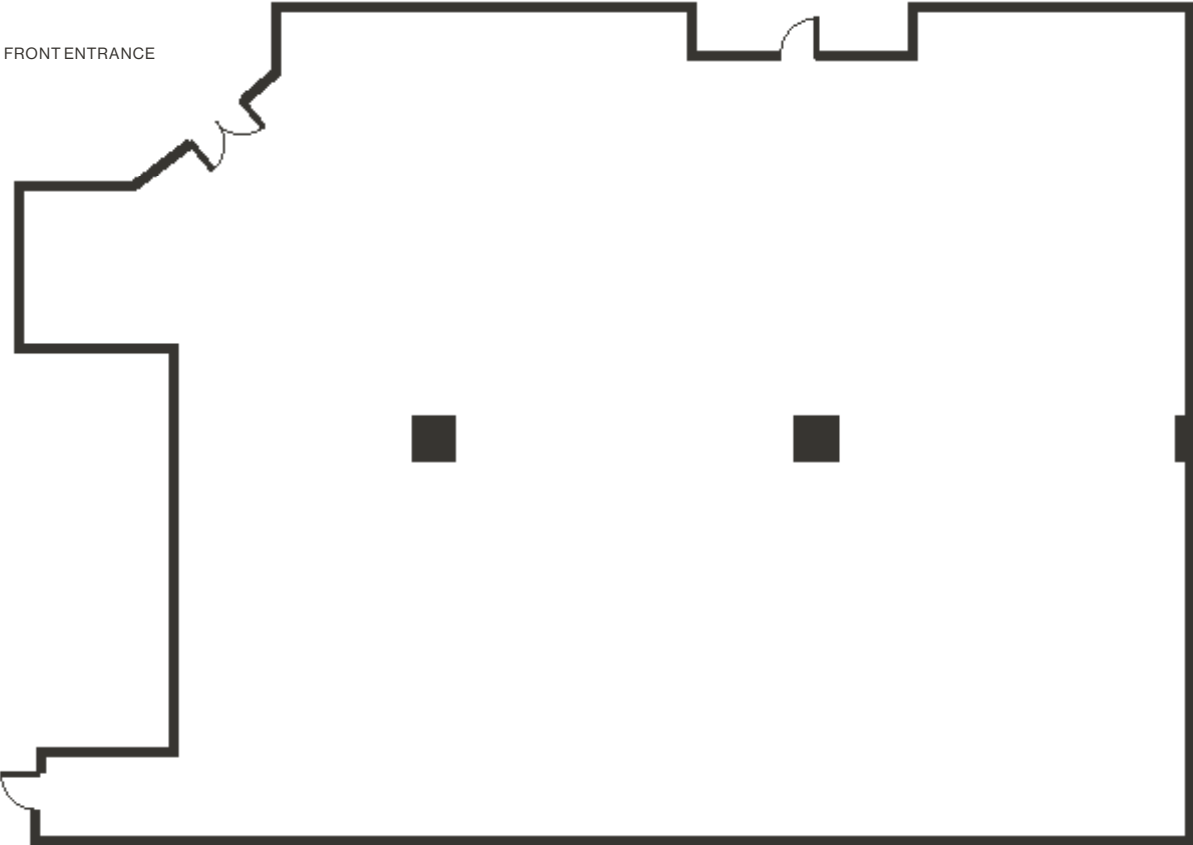
Available NAP



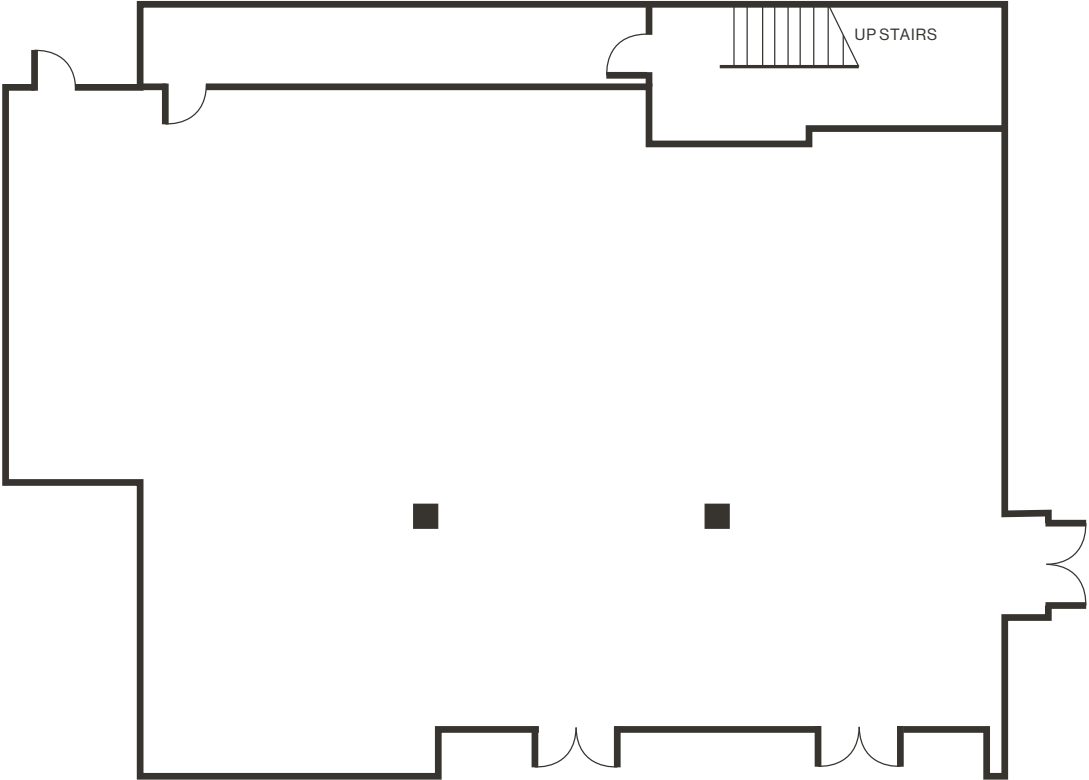
N



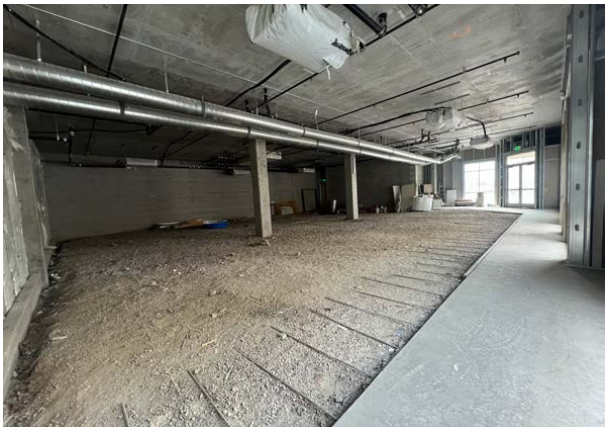
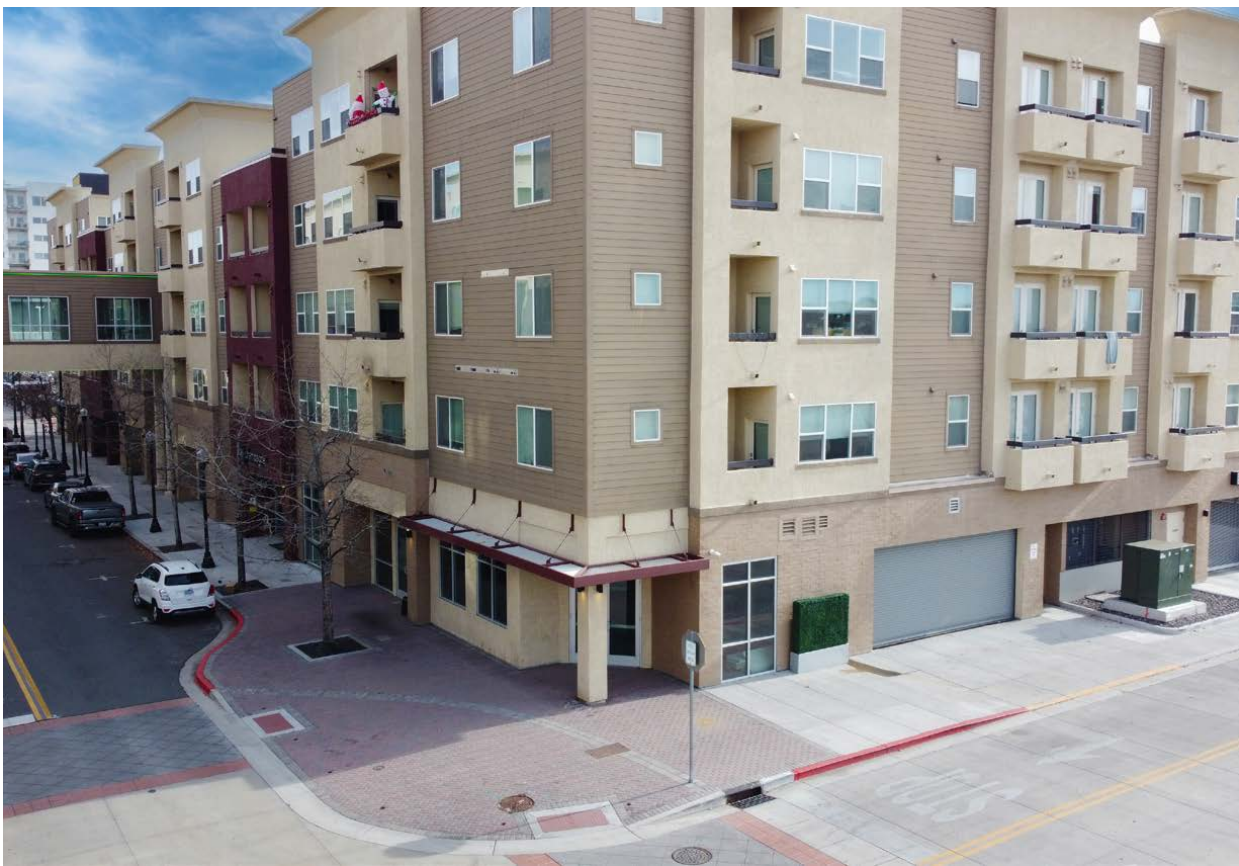
Floor Plan
Suite 1125 #181



Floor Plan
Suite 1130 #180



Property Photos



LOGIC Commercial Real Estate

Specializing in Brokerage and Receivership Services



Join our email list and
connect with us on LinkedIn

The information herein was obtained from sources deemed reliable; however LOGIC Commercial Real Estate makes no guarantees, warranties or representation as to the completeness or accuracy thereof.

For inquiries please reach out to our team.

Ian Cochran, CCIM

Partner
775.225.0826
icochran@logicCRE.com
B.045434.LLC

Greg Ruzzine, CCIM

Partner
775.450.5779
gruzzine@logicCRE.com
BS.0145435

Point of contact

Grace Keating

Associate
775.870.7806
gkeating@logicCRE.com
S.0198962