

±3,300 SF - ±8,726 SF FOR LEASE

# OFFICE/FLEX BUILDING

2942 DAIMLER STREET, SANTA ANA, CA



## PROPERTY FEATURES

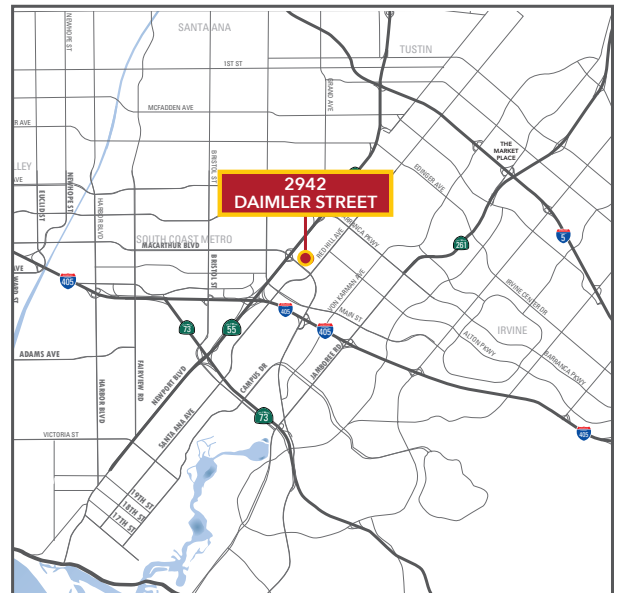
- » Irvine Business Complex Location
- » Immediate Access to 55, 5, 405 Freeways
- » Minutes to Orange County Airport
- » Currently Divided into Two Separate Units
- » First Floor: ±5,426 SF
- » Second Floor: ±3,300 SF
- » Total: ±8,726 SF Connected by Interior Stairs
- » Abundant Free Surface Parking
- » Open Floorplans w/ Extensive Windows
- » Private Restrooms & Kitchen Area
- » Excellent for One Tenant or Two Tenants w/ Expansion Possible
- » Call to Show

## CONTACT:



### TIM ARGUELLO

Senior Vice President/Principal  
T: 949.724.4750  
C: 714.264.0135  
E: [targuello@lee-associates.com](mailto:targuello@lee-associates.com)  
DRE: 01055859



DISCLAIMER: The information contained herein has been obtained from the property owner or other third party and is provided to you without verification as to accuracy. We (Lee & Associates, its brokers, employees, agents, principals, officers, directors and affiliates) make no warranty or representation regarding the information, property, or transaction. You and your attorneys, advisors and consultants should conduct your own investigation of the property and transaction.

**LEE & ASSOCIATES**  
COMMERCIAL REAL ESTATE SERVICES  
NEWPORT BEACH

±3,300 SF - ±8,726 SF FOR LEASE

# OFFICE/FLEX BUILDING

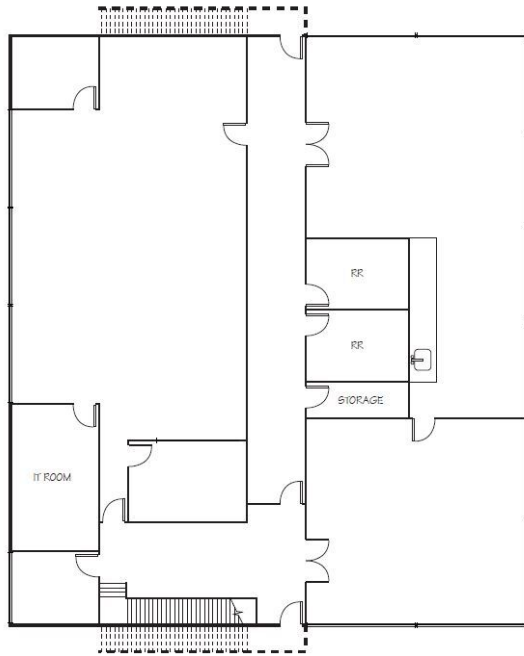
2942 DAIMLER STREET, SANTA ANA, CA



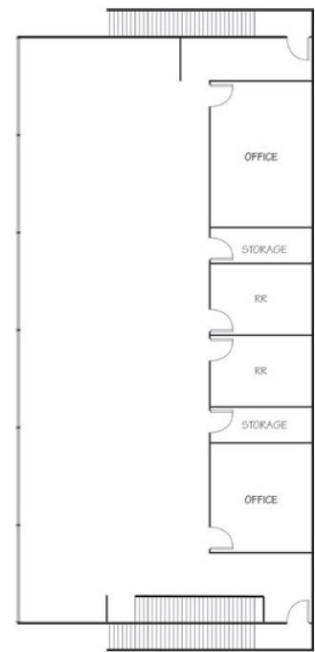
## AERIAL PHOTO



### FIRST FLOOR



### SECOND FLOOR



### CONTACT:



#### TIM ARGUELLO

Senior Vice President/Principal

T: 949.724.4750

C: 714.264.0135

E: [targuello@lee-associates.com](mailto:targuello@lee-associates.com)

DRE: 01055859



DISCLAIMER: The information contained herein has been obtained from the property owner or other third party and is provided to you without verification as to accuracy. We (Lee & Associates, its brokers, employees, agents, principals, officers, directors and affiliates) make no warranty or representation regarding the information, property, or transaction. You and your attorneys, advisors and consultants should conduct your own investigation of the property and transaction.