

525

EAST BAY STREET

±1,901 - 14,515 SF
FOR LEASE

CHARLESTON, SC

CBRE

PROPERTY SUMMARY

525 East Bay Street is a 27,492 RSF, Class A office building in the heart of Downtown Charleston. Its location offers great proximity to award winning restaurants and shopping as well as easy access to I-26, Mt Pleasant via the Arthur Ravenel Jr Bridge, West Ashley, and North Charleston.

Charleston, South Carolina, is known for its rich history, well-preserved architecture, and vibrant culture. The area features cobblestone streets, antebellum homes, and historic landmarks like the Battery, Waterfront Park, and Rainbow Row. It is a hub for dining, shopping, and cultural events, showcasing Southern cuisine and art. The Charleston City Market and various museums highlight the city's heritage. The downtown atmosphere is charming and walkable blending history with modern Southern hospitality.



Property Highlights



\$40.00 - \$44.00/SF
Full Service



Up to ±14,515 SF
Available



Keyfob access to the
building and office



63 on-site surface
parking spaces



Dog Friendly



Beautiful views of the
Charleston Harbor



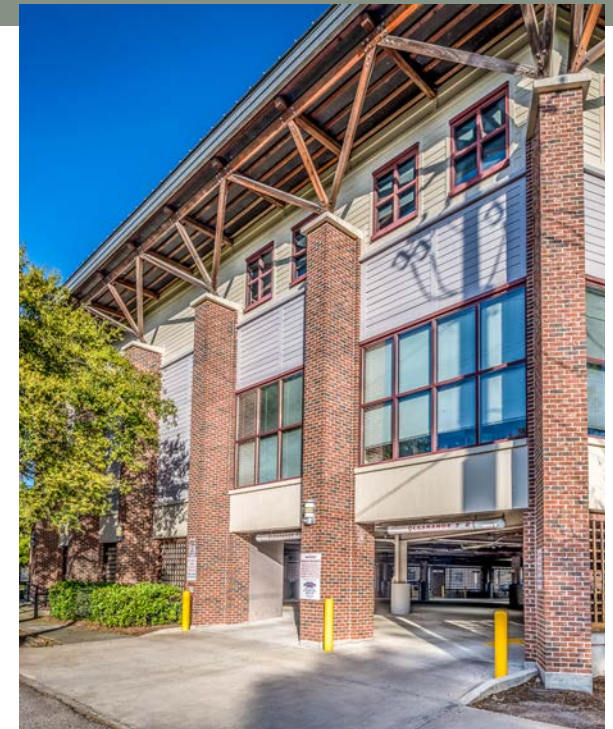
EXTERIOR AND ON-SITE PARKING



Incredible signage opportunity at the busy intersection of East Bay St and Chapel St with 28,300 average vehicles per day.

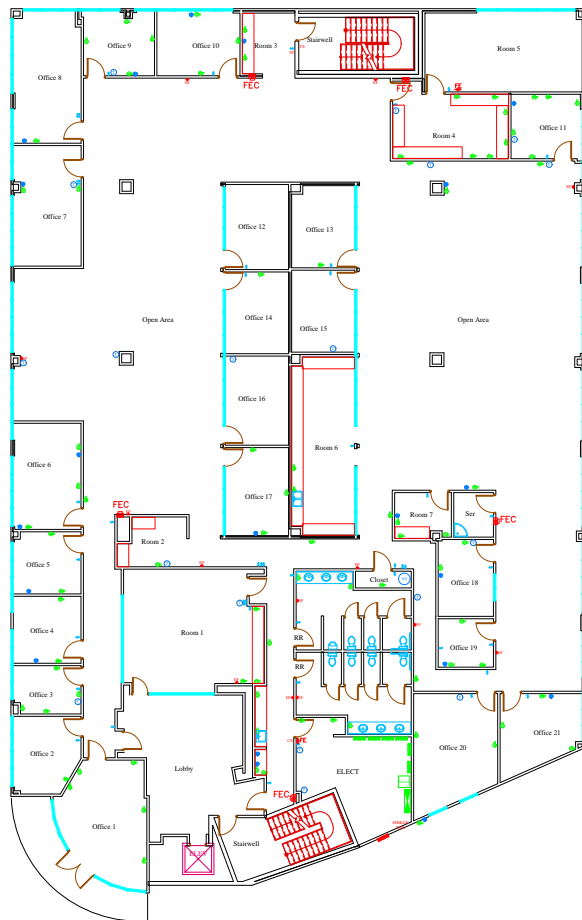


Recent garage upgrades to include new lighting and paint.



SUITE 100

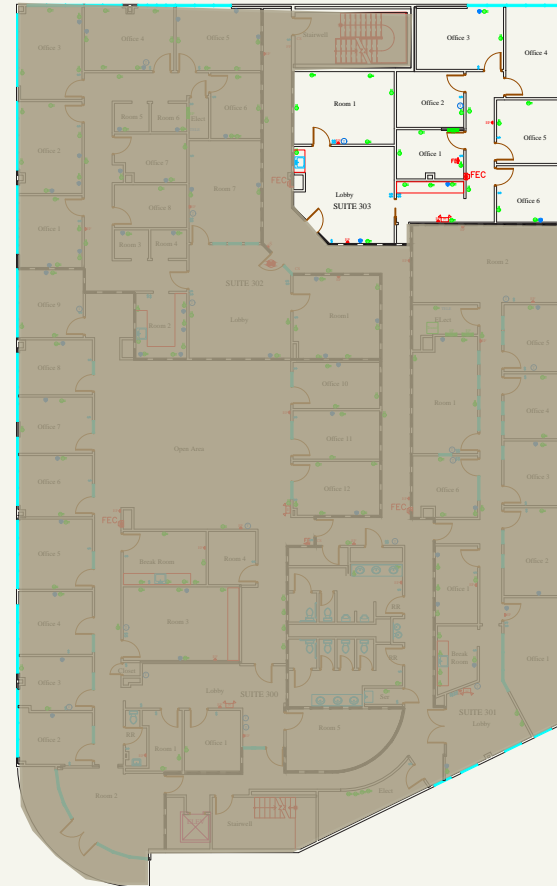
- Entire 1st floor available June 1, 2026 at $\pm 5,000$ to $\pm 14,515$ SF
- Full Kitchen (refrigerator, dishwasher and sink)
- Multiple Large Conference Rooms
- Multiple Small Conference Rooms
- Server Room
- 2 Large Open Areas for Cubicle Setups
- Direct Access from Elevator
- Dedicated Bathrooms



Suite 100
Floor Plan
 $\pm 5,000$ to
 $\pm 14,515$ SF

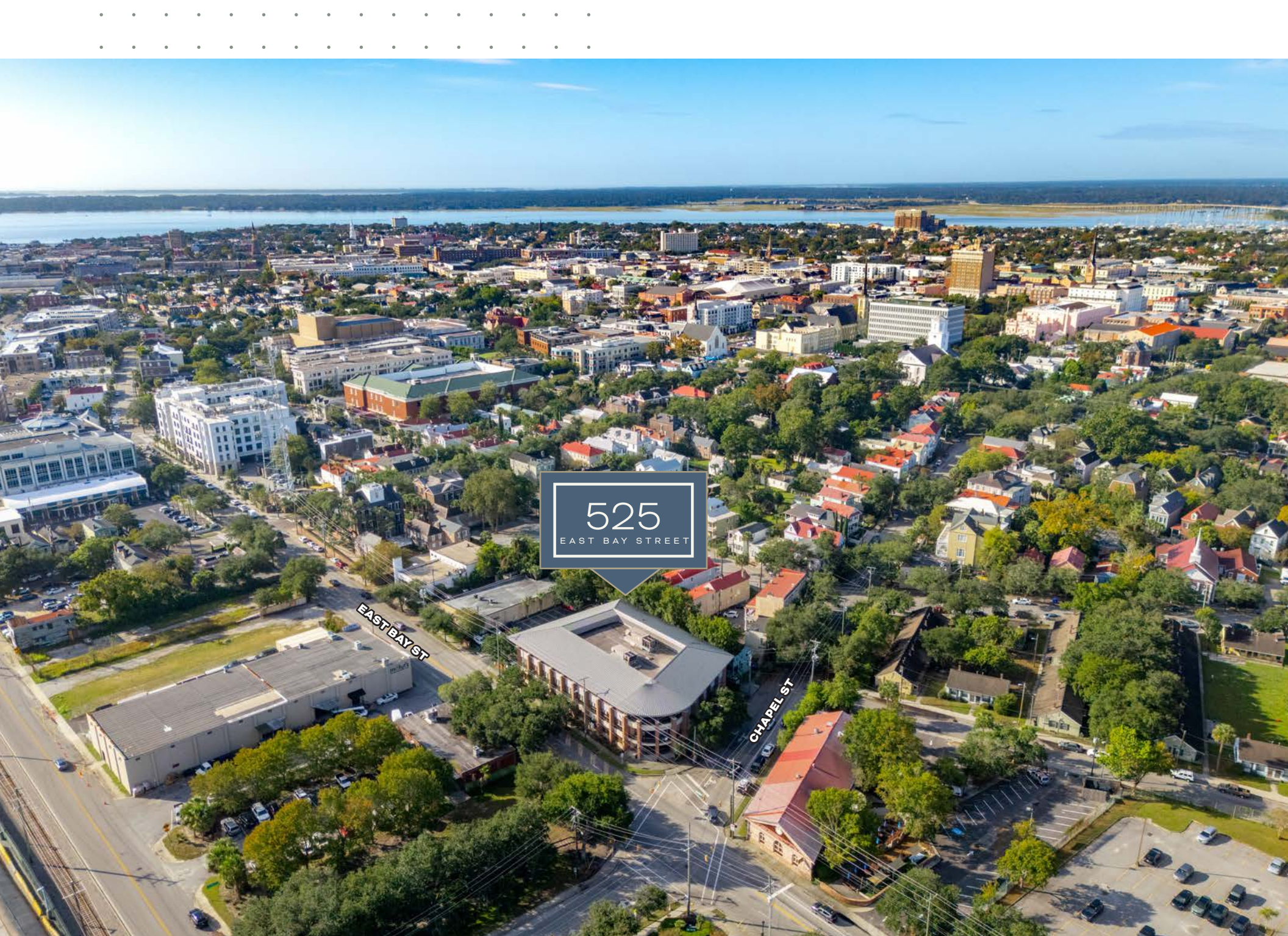


SUITE 203



**Suite 203
Floor Plan
±1,901 SF**

- **Available Immediately at ±1,901 SF**
- **5 Currently Setup Dedicated Office Suites**
- **Conference Room**
- **Server Room**
- **Reception/Entrance Area**
- **Small Sink Area**
- **4 Parking Spaces**



525
EAST BAY STREET

EAST BAY ST

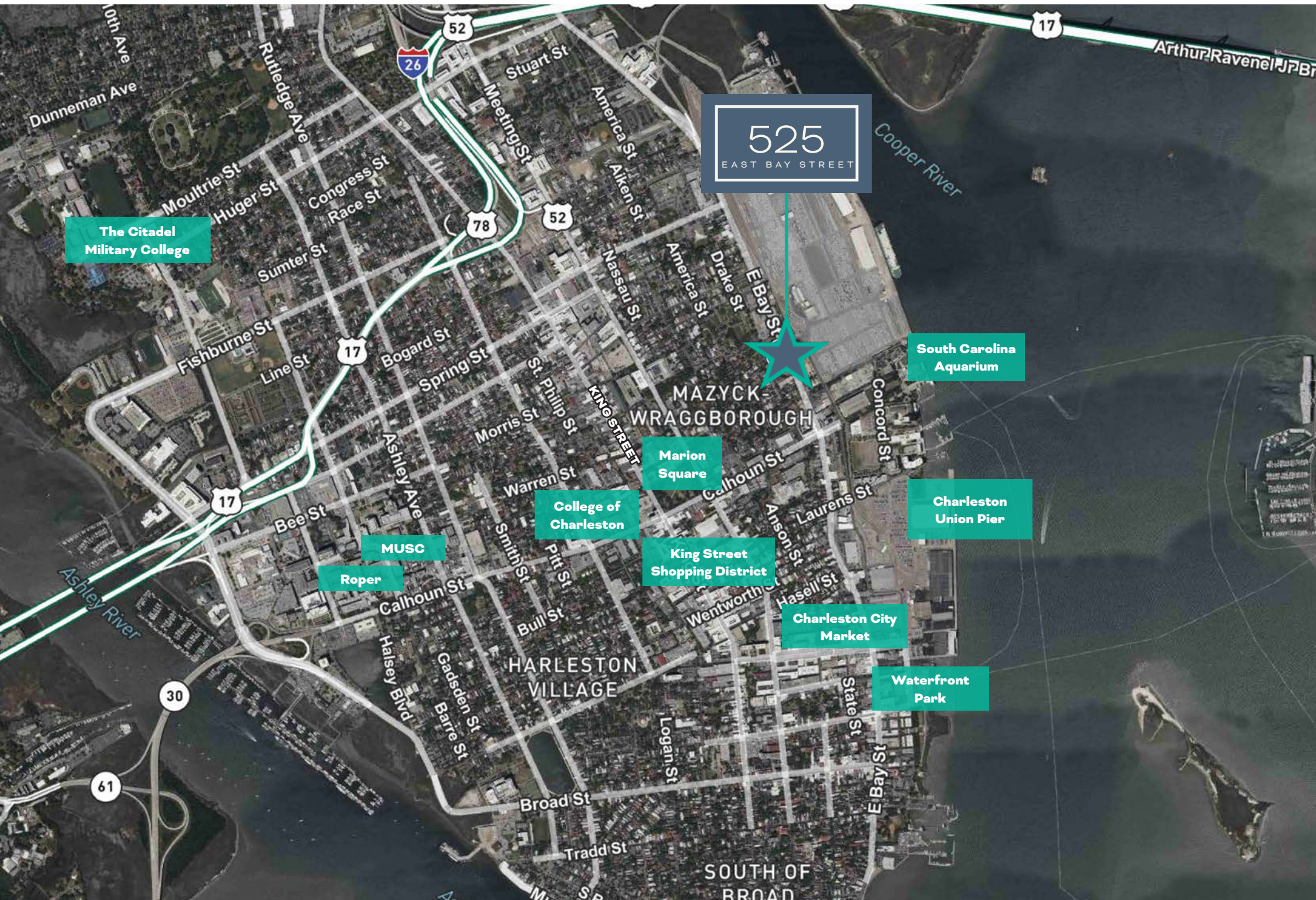
CHAPEL ST



525
EAST BAY STREET

EAST BAY ST

CHAPEL ST



525
EAST BAY STREET

The Citadel
Military College

South Carolina
Aquarium

Charleston
Union Pier

Waterfront
Park

Charleston City
Market

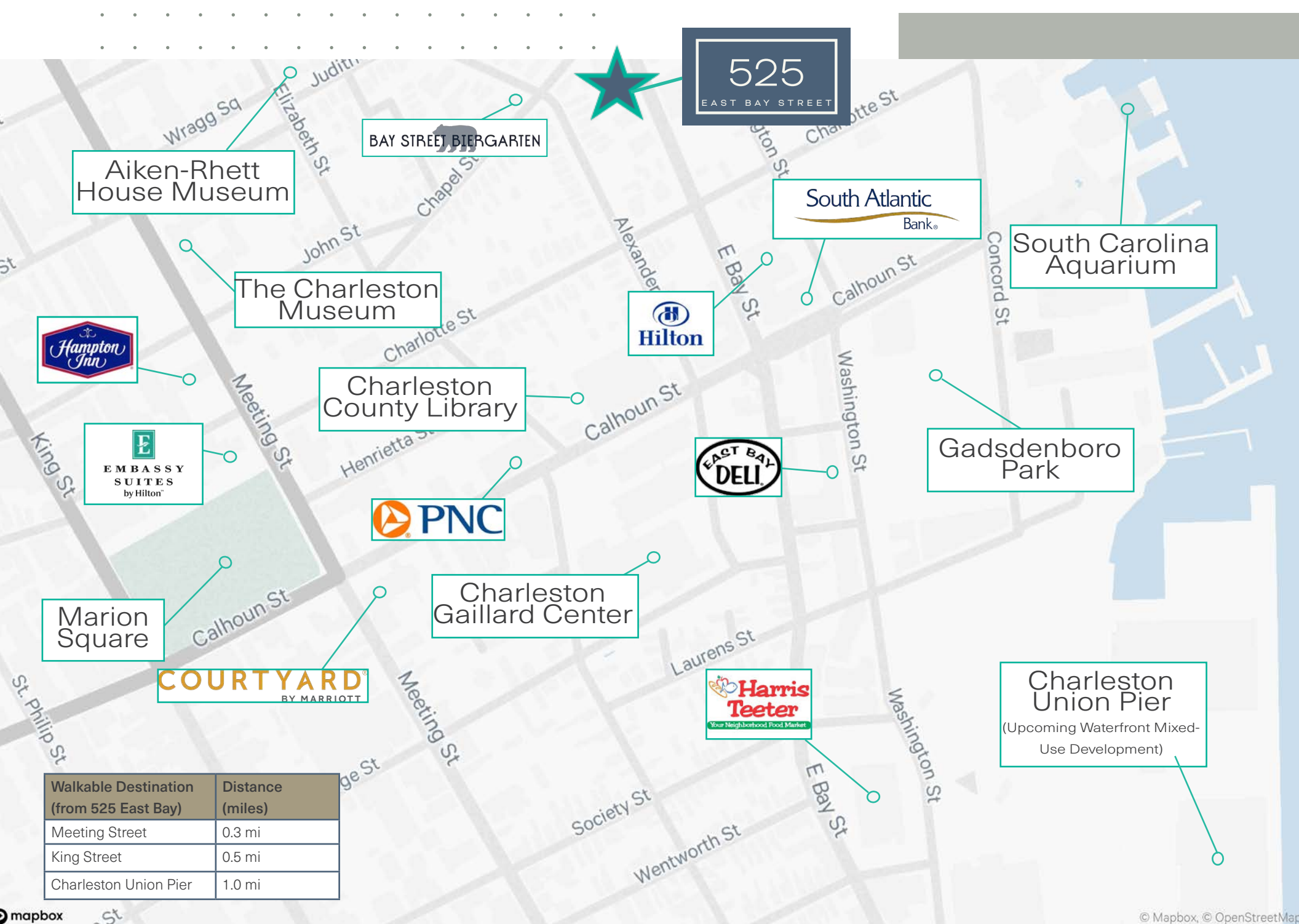
King Street
Shopping District

Marion
Square

College of
Charleston

MUSC

Roper



Walkable Destination (from 525 East Bay)	Distance (miles)
Meeting Street	0.3 mi
King Street	0.5 mi
Charleston Union Pier	1.0 mi

525

EAST BAY STREET



CHARLES CARMODY

Senior Vice President

+1 843 577 1155

charles.carmody@cbre.com

RYAN CARMODY

Vice President

+1 843 577 1162

ryan.carmody@cbre.com

© 2025 CBRE, Inc. All rights reserved. This information has been obtained from sources believed reliable but has not been verified for accuracy or completeness.

You should conduct a careful, independent investigation of the property and verify all information. Any reliance on this information is solely at your own risk.

CBRE and the CBRE logo are service marks of CBRE, Inc. All other marks displayed on this document are the property of their respective owners, and the use of such logos does not imply any affiliation with or endorsement of CBRE. Photos herein are the property of their respective owners. Use of these images without the express written consent of the owner is prohibited.

CBRE