

FOR LEASE



# EDINBURGH CENTER I

113 Edinburgh South Drive | Cary, NC 27511



CAPITAL  
ASSOCIATES®



# EDINBURGH CENTER I

113 Edinburgh South Drive | Cary, NC 27511

PROPERTY TYPE	Office
BUILDING SIZE	29,735 SF
YEAR BUILT	1984
COUNTY	Wake
LOCATION	Cary, NC
FLOORS	2
PARKING	3.12/1,000 SF



**CAPITAL  
ASSOCIATES.**

**TRIPP BRADSHAW**

919.749.0004

[tbradshaw@capitalassociates.com](mailto:tbradshaw@capitalassociates.com)

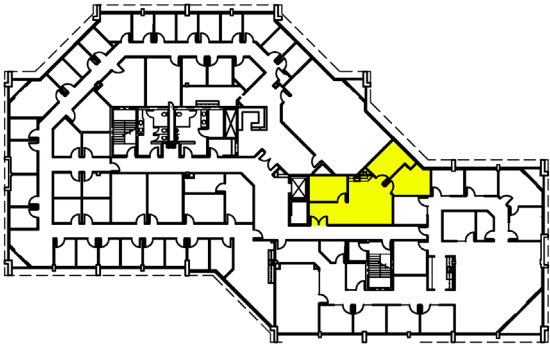
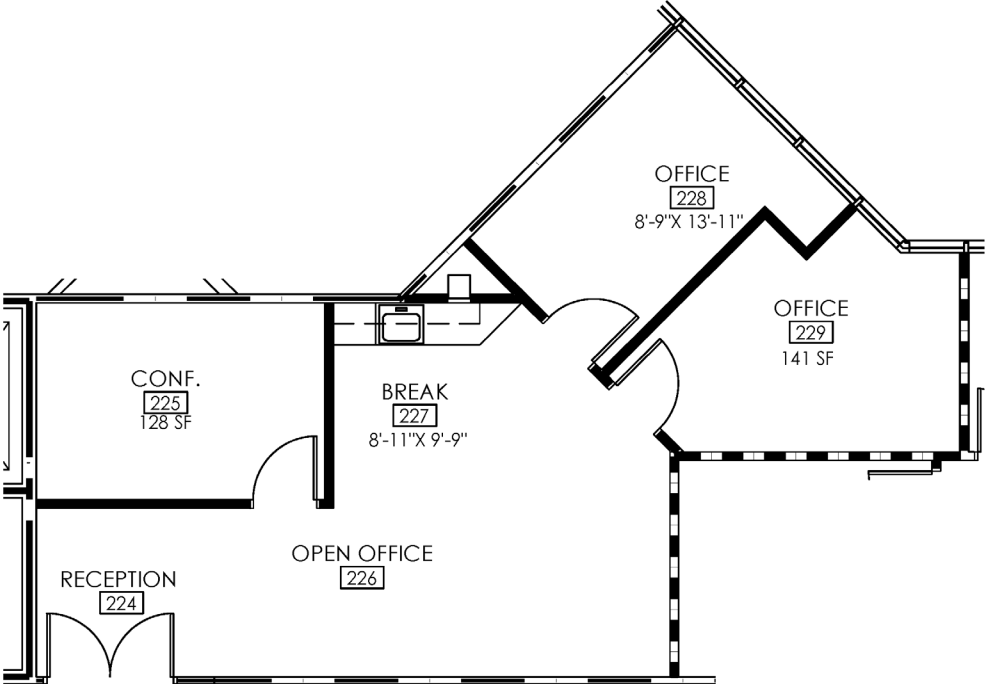
# EDINBURGH CENTER I

113 Edinburgh South Drive | Cary, NC 27511

AVAILABLE

Second Floor  
Suite 210

953 SF





# EDINBURGH CENTER I

113 Edinburgh South Drive | Cary, NC 27511

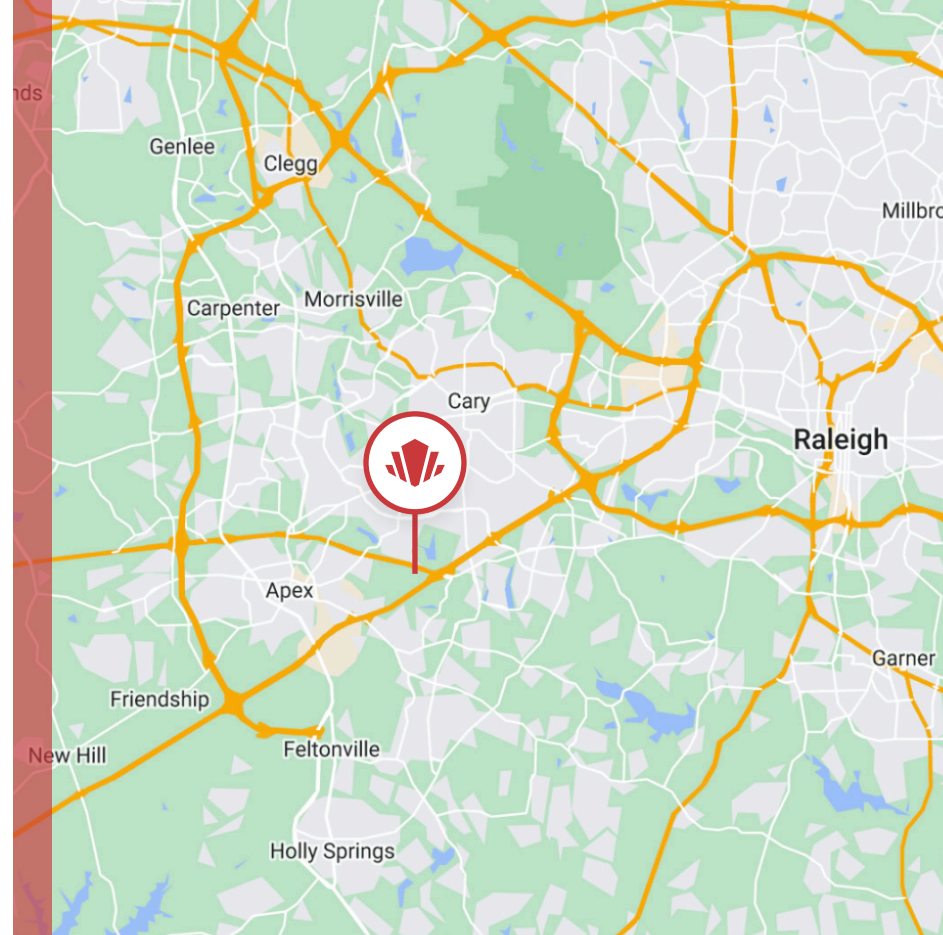
## PARK AMENITIES

Edinburgh Center I is a 29,735 SF two-story office building. Some of its highlights include:

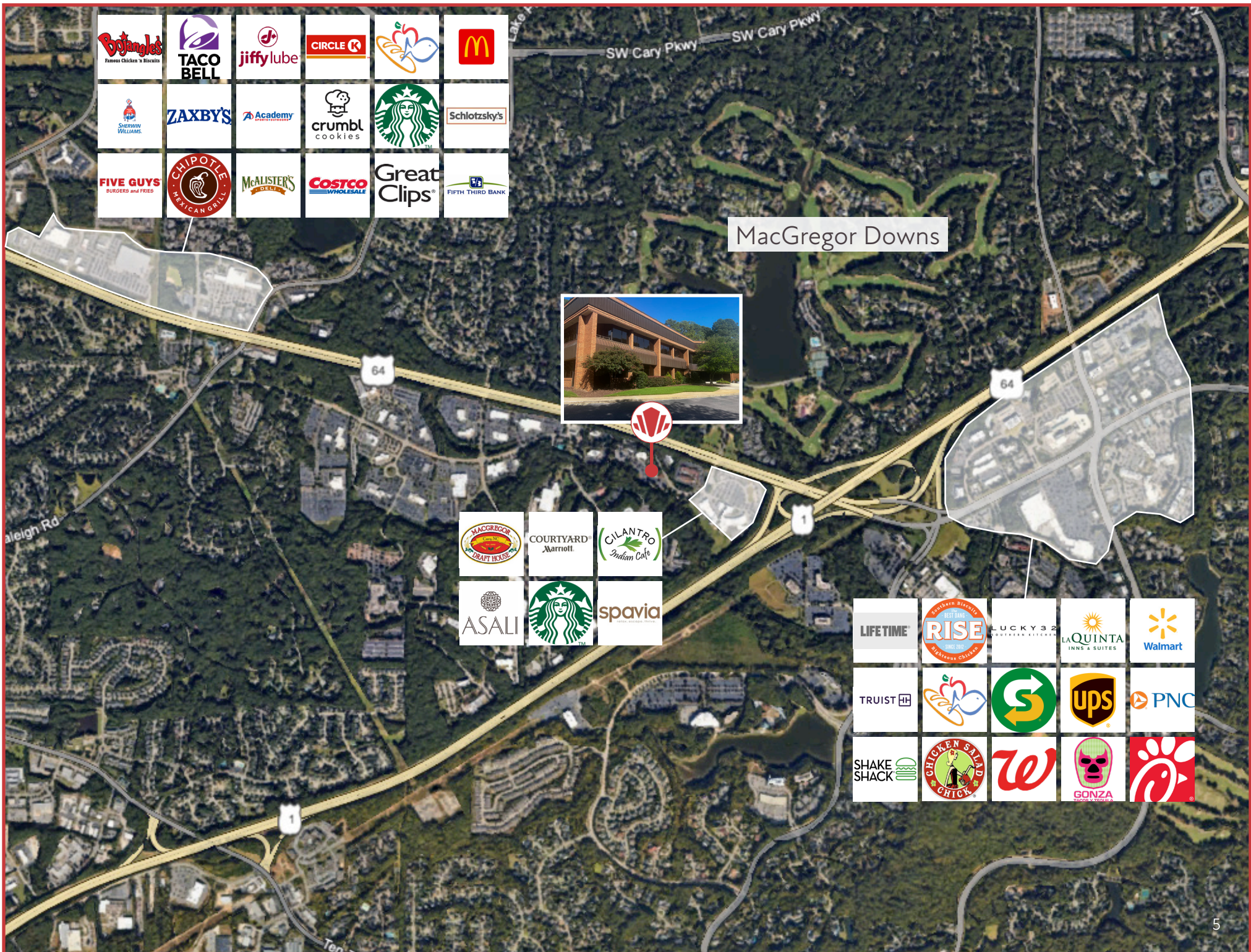
- 4-minute walk to MacGregor Village
- Nearby bus line
- Easy access to US-1 and US-64

## LOCATION

The building is located in Cary, just south of MacGregor Downs. It is ideally situated off Highway 64. The city of Cary is rapidly expanding its restaurants, attractions, residential neighborhoods, making it one of the most desirable places to work and live in the Triangle area.







MacGregor Downs

