



## RETAIL SPACE

# ARMONK, NY

## ARMONK TOWN CENTER

575 MAIN STREET

### SIZE

2,315 SF

### ASKING RENT

Upon Request

### DELIVERY DATE

Immediate

### CO-TENANTS

Town Center Pharmacy, Nail Salon, Dry Cleaners, Beginning Blues, Kira Sushi, Bee's Cakes Bakery

### NEIGHBORS

CVS, Wells Fargo Bank, Citibank, Bank of America, USPS, La Quinta Inn & Suites by Wyndham

### COMMENTS

Currently built out as a restaurant

20,013 SF Shopping Center

Located directly on Route 128 with convenient access to Route 22, and I-684

Strong local demographics

## CONTACT EXCLUSIVE AGENT

### LISA DANIEL

ldaniel@ripcony.com

516.933.8880



100 Jericho Quadrangle  
Suite 120  
Jericho, NY 11753  
516.933.8880

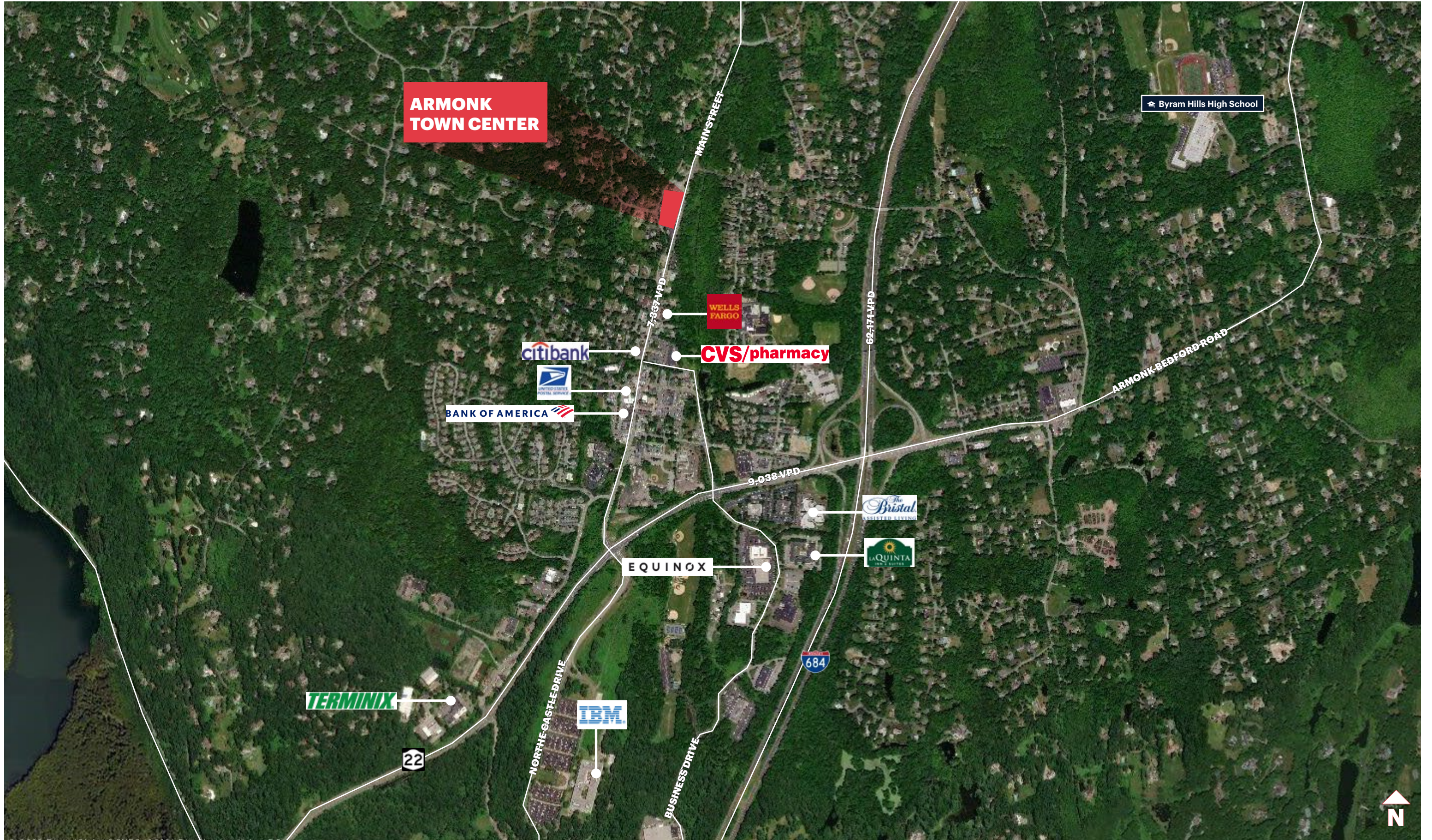
Please visit us at [ripcony.com](http://ripcony.com) for more information

This information has been secured from sources we believe to be reliable, but we make no representations as to the accuracy of the information. References to square footage are approximate. Buyer must verify the information and bears all risk for any inaccuracies.

**ADDITIONAL PHOTOS**



**MARKET AERIAL**



**AERIAL**

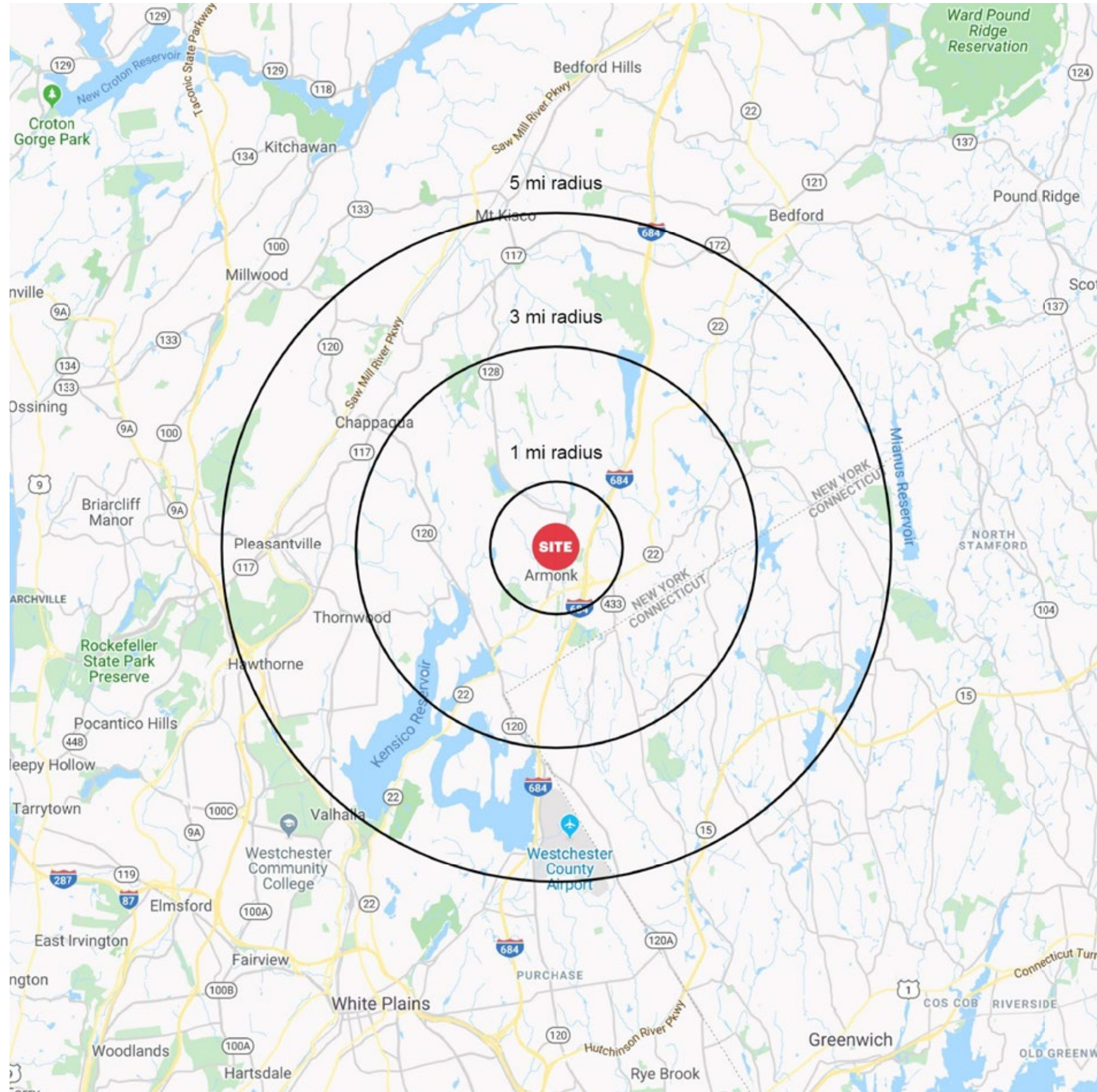




**SITE PLAN**



# AREA DEMOGRAPHICS



ARMONK TOWN CENTER ARMONK, NEW YORK

## 1 MILE RADIUS

### POPULATION

3,262

### HOUSEHOLDS

1,157

### AVERAGE HOUSEHOLD INCOME

\$269,375

### MEDIAN HOUSEHOLD INCOME

\$193,285

### COLLEGE GRADUATES (Bachelor's +)

1,743 - 78.6%

### TOTAL BUSINESSES

479

### TOTAL EMPLOYEES

6,913

### DAYTIME POPULATION (w/ 16 yr +)

7,662

## 3 MILE RADIUS

### POPULATION

15,497

### HOUSEHOLDS

5,211

### AVERAGE HOUSEHOLD INCOME

\$322,995

### MEDIAN HOUSEHOLD INCOME

\$198,928

### COLLEGE GRADUATES (Bachelor's +)

8,151 - 77.5%

### TOTAL BUSINESSES

773

### TOTAL EMPLOYEES

10,588

### DAYTIME POPULATION (w/ 16 yr +)

15,139

## 5 MILE RADIUS

### POPULATION

59,332

### HOUSEHOLDS

20,090

### AVERAGE HOUSEHOLD INCOME

\$268,335

### MEDIAN HOUSEHOLD INCOME

\$169,852

### COLLEGE GRADUATES (Bachelor's +)

26,929 - 67.3%

### TOTAL BUSINESSES

3,826

### TOTAL EMPLOYEES

43,764

### DAYTIME POPULATION (w/ 16 yr +)

61,098

# AREA DEMOGRAPHICS

