



690 STOCKTON DR.

N O W L E A S I N G

**EXTON, PA
PREMIER
LOCATION**
1/4 mile from the
PA Turnpike



PROPERTY FEATURES

EagleviewSM is an exceptional place to do business. 690 Stockton Drive is a 45,000 square-foot 3-story class A suburban office building. Located in a wooded setting, the building's two story atrium lobby brings the tranquil setting into your workplace.



brick & glass exterior



200 parking spaces



fully sprinklered



energy management system



access control system



individually tailored tenant suites



ample tenant identification



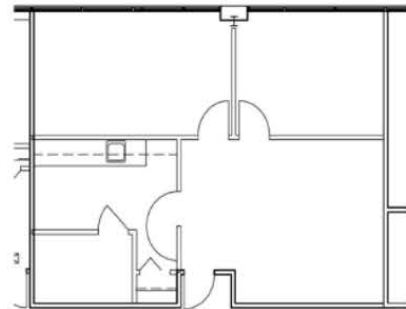
24/7 property management

AVAILABLE SPACE

690 Stockton Drive

DISTINCTIVE COMMERCIAL PROPERTIES

1st Floor
1,059 SF



610.458.1900 | HankinGroup.com

First Floor

Total Sq. Ft Available: 1,059



**GET IN
TOUCH**

Stacy Martin
VP of Commercial Sales & Leasing
484.713.8801
stacy.martin@hankingroup.com

Sam Sherrill
Commercial Leasing Manager
484.713.8802
sam.sherrill@hankingroup.com