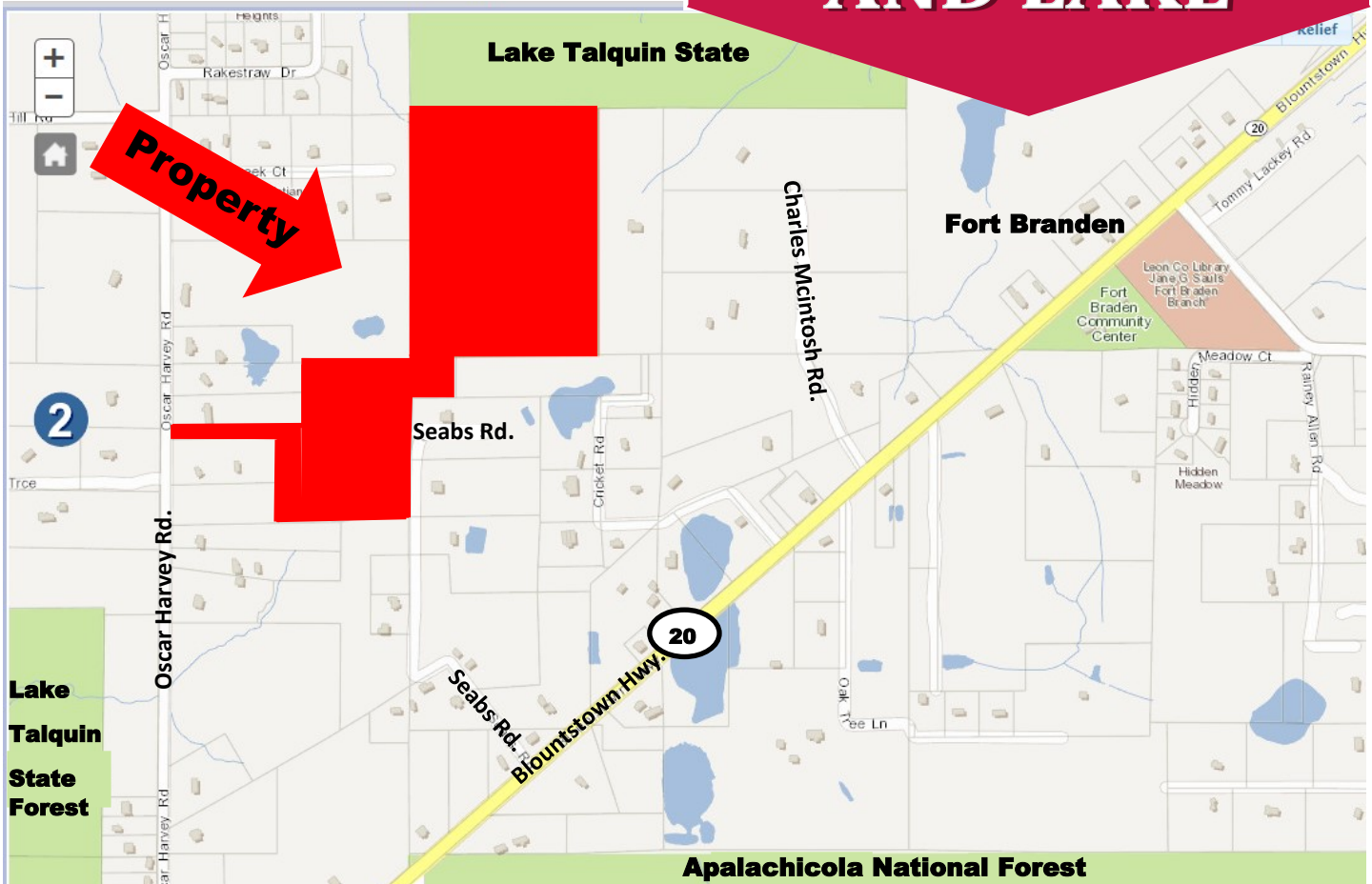


EWING

REAL ESTATE, LLC

**44 +/- Acres
ADJACENT TO
STATE PARK
AND LAKE**



Located Adjacent to Lake Talquin State Park

\$450,000

**44 +/- Acres Of Undeveloped Land
(Leon County) Tallahassee, Florida**

EWING
REAL ESTATE, LLC

7807 BAYMEADOWS RD. EAST
SUITE 200
JACKSONVILLE, FL 32256



DANIEL BLANCHARD
904.237.7781
DBLANCHARD@ALLENEWING.COM

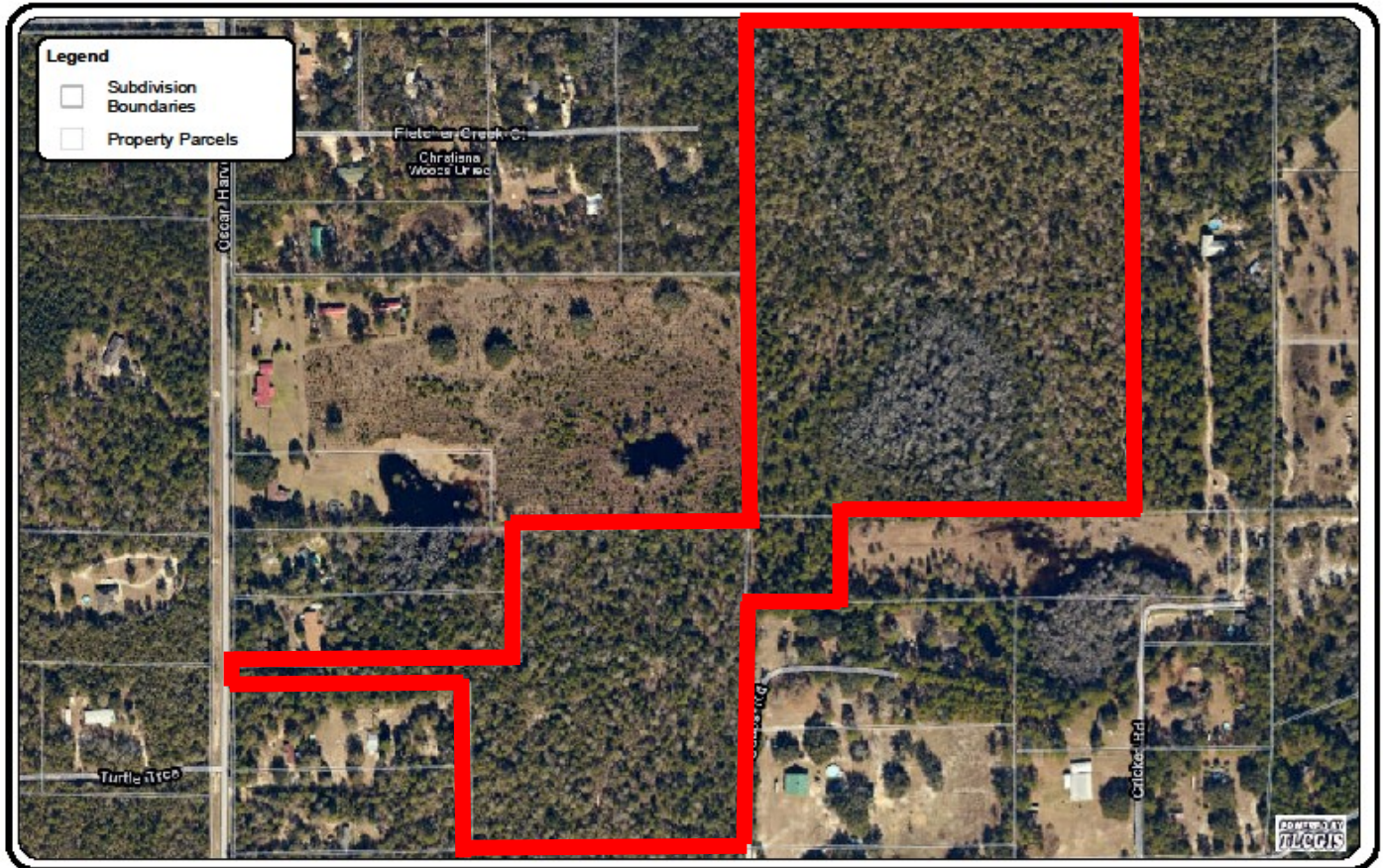


BEN BISHOP, III
904.982-2713
BBISHOP3@ALLENEWING.COM

REAL ESTATE SALES LAND DEVELOPMENT INVESTMENT ADVISORY CAPITAL MARKETS

Parcel Aerial

44+/- Acres Leon County



Lake Talquin Site Aerial

DISCLAIMER

This product has been compiled from the most accurate source data from Leon County, the City of Tallahassee and the Leon County Property Appraiser's Office. However, this product is for reference purposes only and is not to be construed as a legal document or survey instrument. Any reliance on the information contained herein is at the user's own risk. Leon County, the City of Tallahassee, and the Leon County Property Appraiser's Office assume no responsibility for any use of the information contained herein or any loss resulting therefrom.

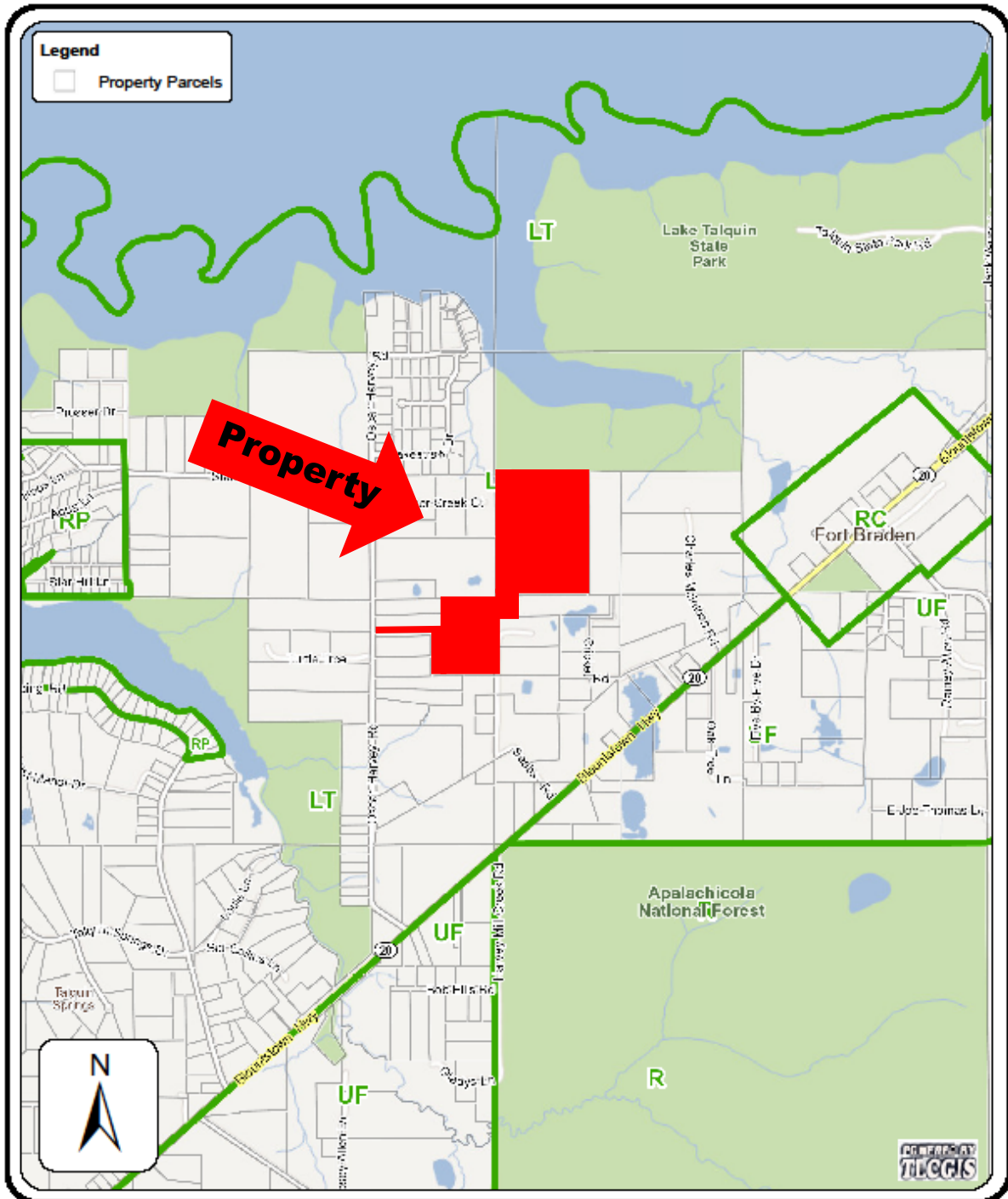



Scale:	Tallahassee/Leon County GIS Management Information Services
Not To Scale:	Leon County Courthouse
Date Drawn:	301 S. Monroe St, P3 Level Tallahassee, FL 32301
April 19, 2016	850/606-5504 http://www.tlccgis.org

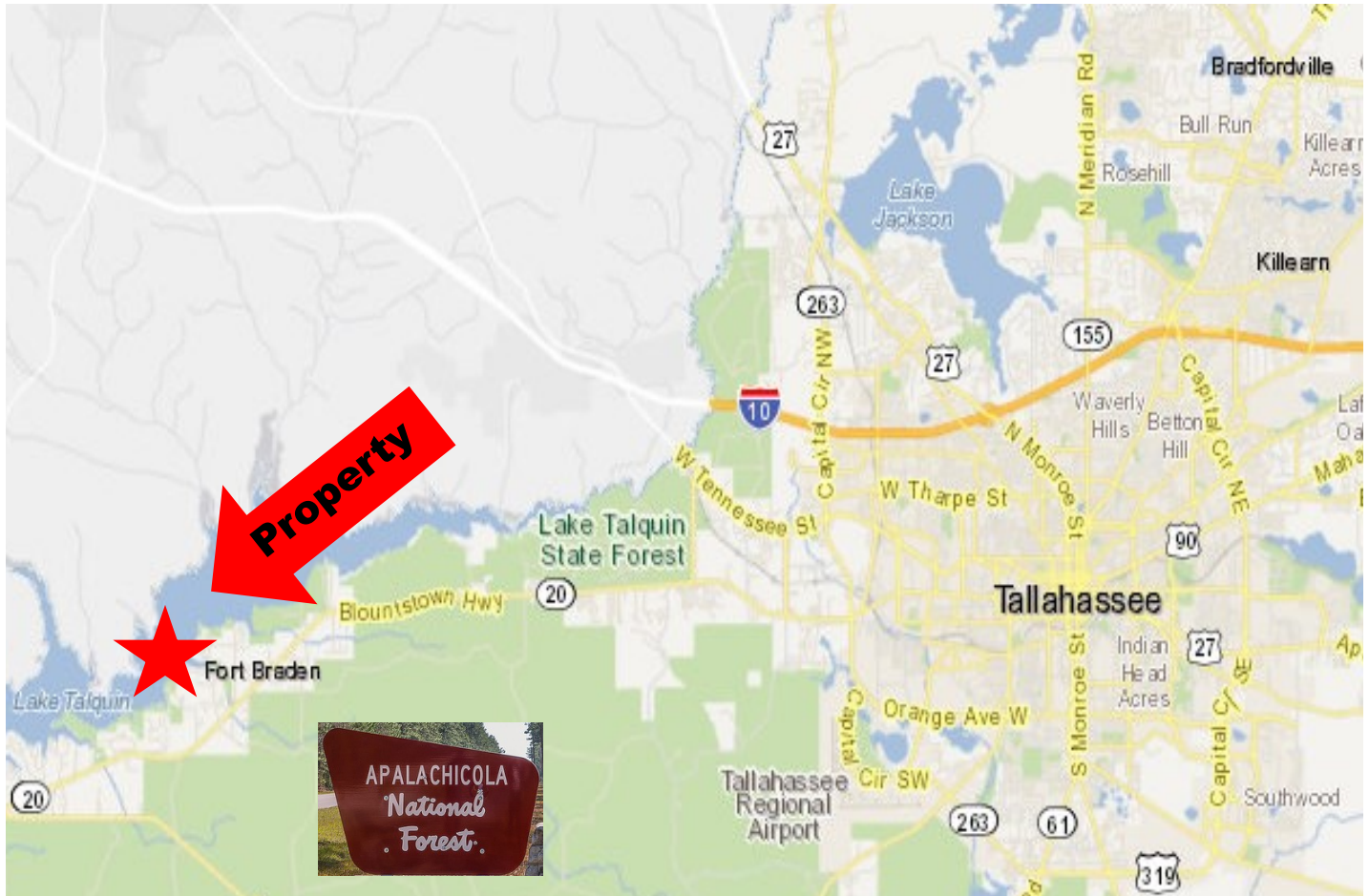
- A. Parcel # 4304202280000—30 Acres**
- B. Parcel # 4305204800100—12.95 Acres**
- C. Parcel # 4304206140000—1.11 Acres**

Zoning Map

44+/- Acres Leon County



	Zoning Map DISCLAIMER	Scale: Not To Scale	Tallahassee/Leon County GIS Management Information Services
	This product has been compiled from the most accurate source data from Leon County, the City of Tallahassee, and the Leon County Property Appraiser's Office. However, this product is for reference purposes only and is not to be construed as a legal document or survey instrument. Any reliance on the information contained herein is at the user's own risk. Leon County, the City of Tallahassee, and the Leon County Property Appraiser's Office assume no responsibility for any use of the information contained herein or any loss resulting therefrom.	Date Drawn: April 19, 2016	Leon County Courthouse 301 S. Monroe St, P3 Level Tallahassee, FL 32301 850/606-5504 http://www.tlccgis.org



- ◆ **LT Zoning allows for a variety of uses**
- ◆ **Immediately adjacent to State Park and lake**
- ◆ **20 minutes from Tallahassee**
- ◆ **Perfect for Residential or Recreation**

Roads Aerial

44+/- Acres Leon County



EWING
REAL ESTATE, LLC

DANIEL BLANCHARD
904.237.7781
DBLANCHARD@ALLENEWING.COM

BEN BISHOP, III
904.982-2713
BBISHOP3@ALLENEWING.COM

Property Photos

44+/- Acres Leon County



For more information please contact Daniel Blanchard or Ben Bishop

EWING
REAL ESTATE, LLC

7807 BAYMEADOWS RD. EAST
SUITE 200
JAKSONVILLE, FL 32256



DANIEL BLANCHARD
904.237.7781
DBLANCHARD@ALLENEWING.COM



BEN BISHOP, III
904.982-2713
BBISHOP3@ALLENEWING.COM

REAL ESTATE SALES LAND DEVELOPMENT INVESTMENT ADVISORY CAPIITAL MARKETS