



1025 N. Black Horse Pike

Runnemede, New Jersey 08078

Property Overview

Up to 4,150 SF Available

Office/Warehouse

Upgraded Interior Finishes in Office Area

3 Private Offices w/ Conference Room and Bullpen

Clear Span Warehouse

20'x10' Drive In Door

Close Proximity to NJ Turnpike and Route 295

Showings By Appointment Only

Offering Summary

Building Size:	17,087 SF
Available SF:	1,600 - 4,150 SF
Lot Size:	1.4 Acres

Demographics 1 Mile 3 Miles 5 Miles

Total Households	4,986	42,579	114,796
Total Population	12,779	105,345	289,605
Average HH Income	\$68,248	\$74,879	\$73,888

For More Information

Joe Riggs

O: 609 352 1162

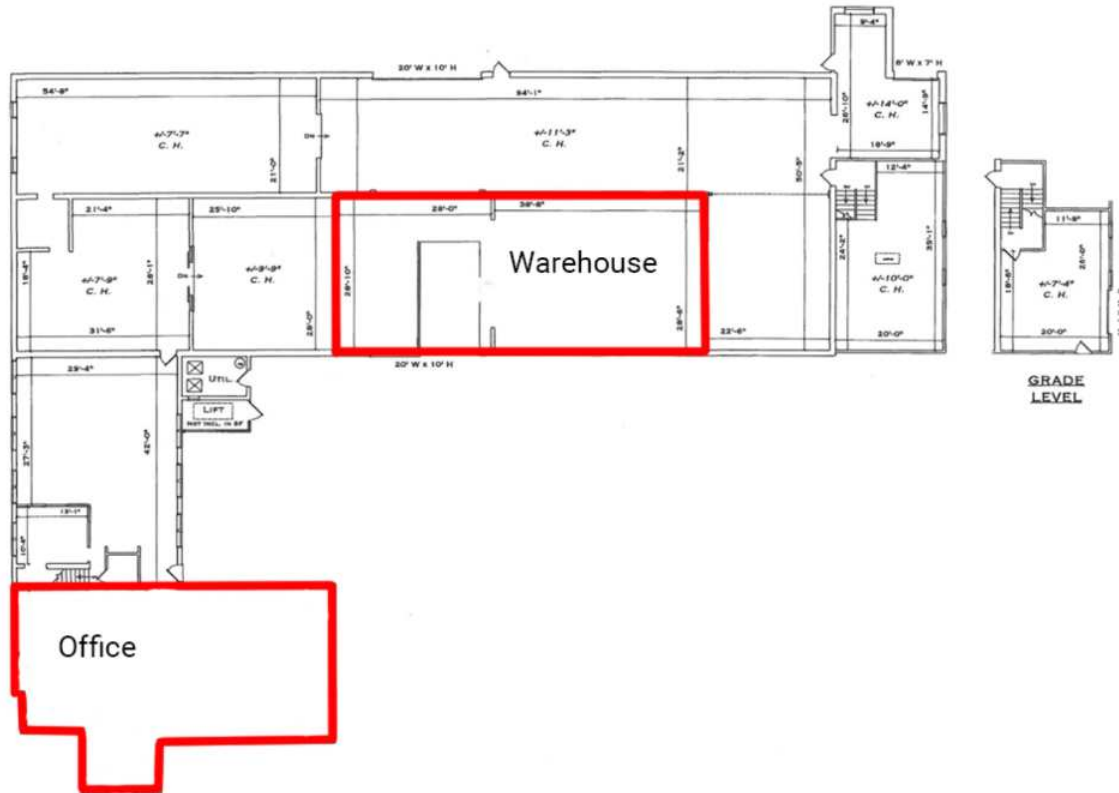
joe.riggs@naimertz.com

Will Frank

O: 856 724 4248

will.frank@naimertz.com



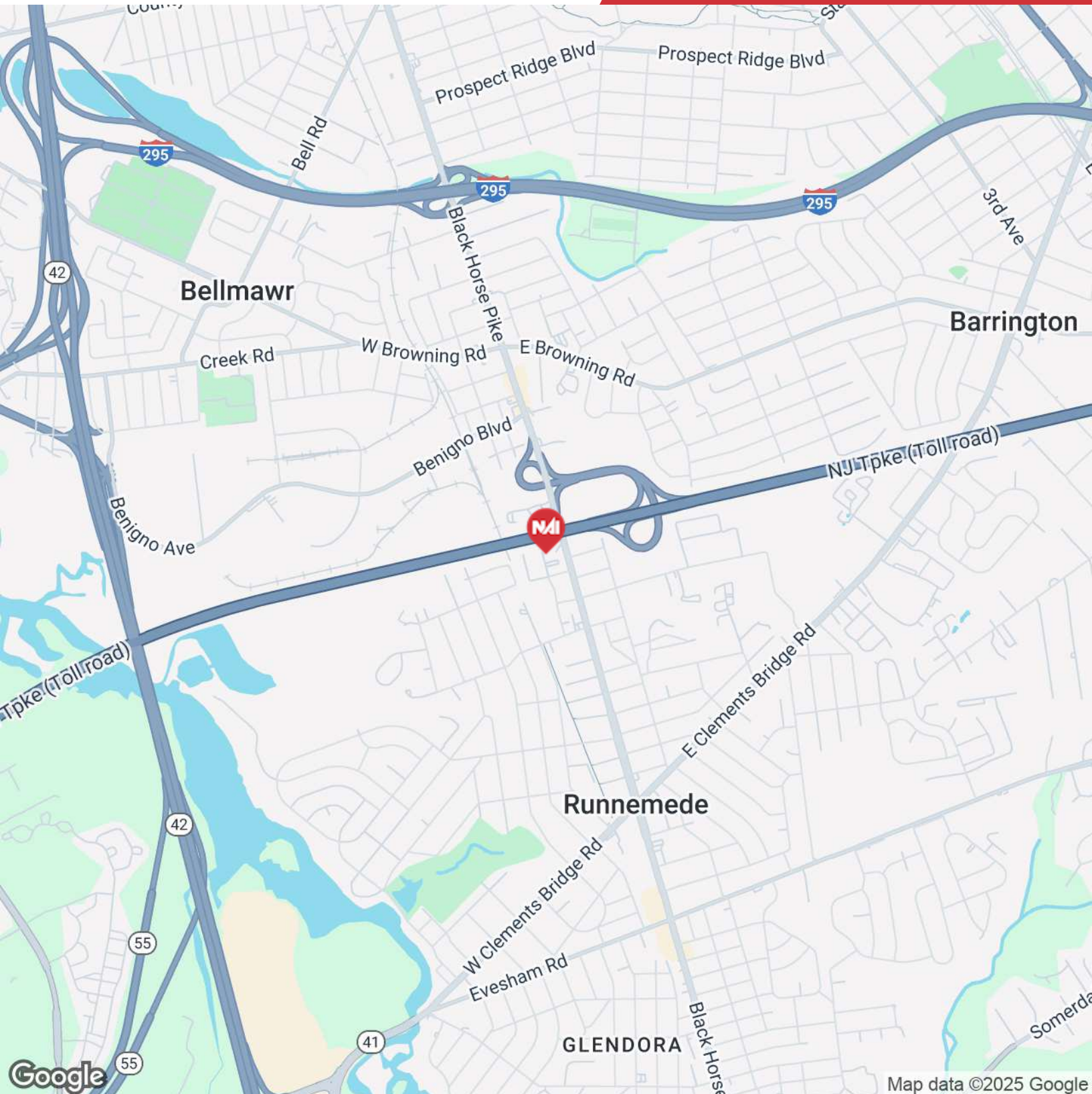


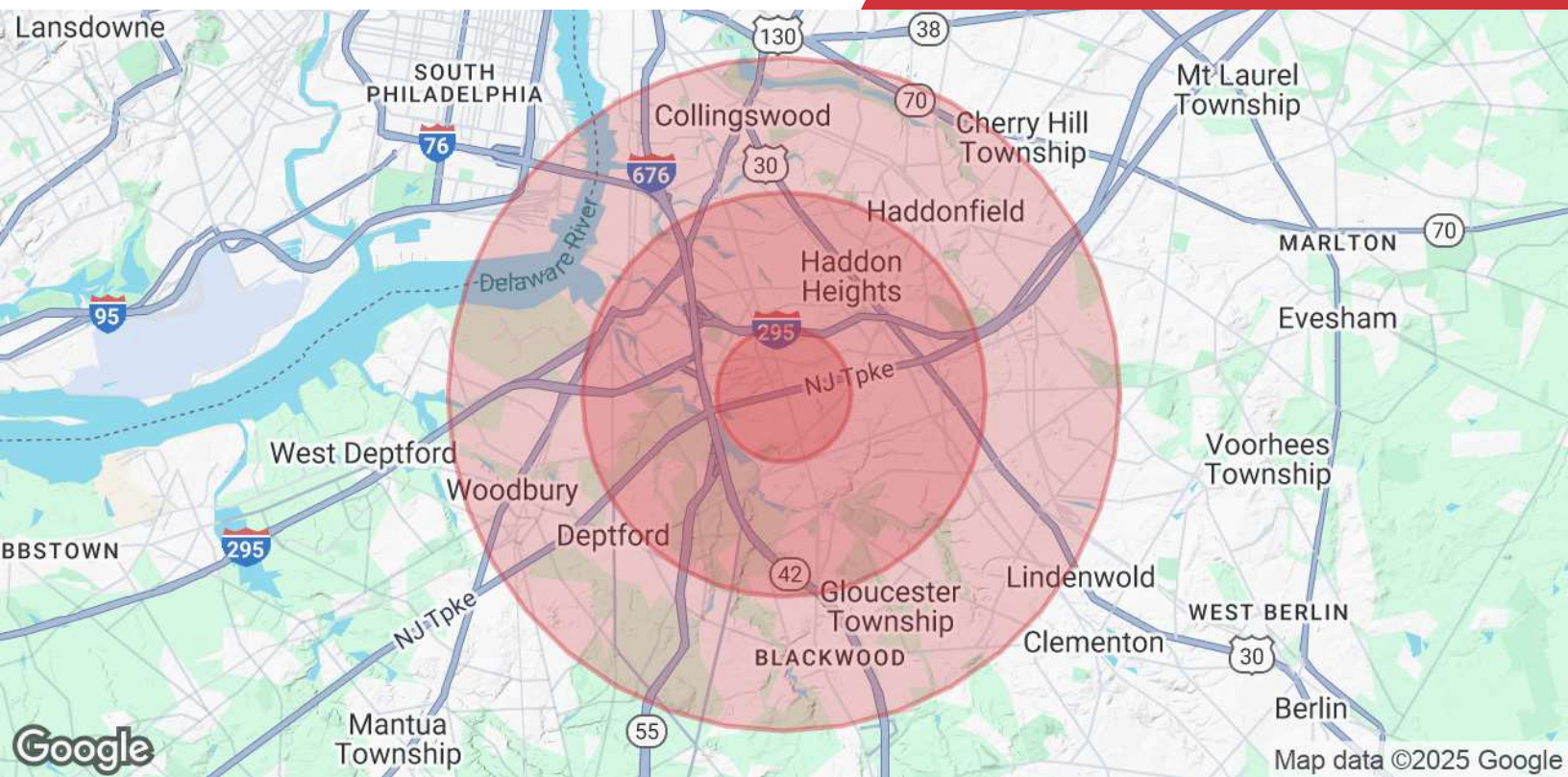
Lease Information

Lease Type:	MG	Lease Term:	Negotiable
Total Space:	1,600 - 2,550 SF	Lease Rate:	\$2,250.00 - \$2,300.00 per month

Available Spaces

Suite	Tenant	Size (SF)	Lease Type	Lease Rate	Description
Suite 1	Available	1,600 SF	Modified Gross	\$2,300 per month	3 Private Offices Conference Room Bullpen Reception/Seating Area Kitchenette
Warehouse	Available	2,550 SF	Modified Gross	\$2,250 per month	1 20'x10' Drive in Door 11.25' Clear Ceiling Height





Population

	1 Mile	3 Miles	5 Miles
Total Population	12,779	105,345	289,605
Average Age	40.5	40.3	38.4
Average Age (Male)	38.9	39.4	37.0
Average Age (Female)	42.3	40.9	39.6

Households & Income

	1 Mile	3 Miles	5 Miles
Total Households	4,986	42,579	114,796
# of Persons per HH	2.6	2.5	2.5
Average HH Income	\$68,248	\$74,879	\$73,888
Average House Value	\$222,188	\$242,963	\$248,952

2020 American Community Survey (ACS)