

# OFFICE PROPERTY FOR LEASE

## Livonia Medical Office with Great Exposure

31450 W 7 MILE RD  
LIVONIA, MI 48152



- › 1,108 - 6,280 sf available
- › Common area lobby
- › Great signage opportunities
- › Motivated landlord



**P.A. COMMERCIAL**  
Corporate & Investment Real Estate



### OFFERING SUMMARY

Available SF: 1,108 - 6,280 SF

Building Size: 6,280 SF

Lease Rate: \$12.00 SF/yr (NNN)  
Net Charges: \$4.25/sf

Year Built: 1978

### PROPERTY OVERVIEW

Located on the northwest corner of busy 7 Mile and Merriman Roads. Ample parking with easy access for patients.

### PROPERTY HIGHLIGHTS

- 1,108 - 6,280 sf available
- Common area lobby
- Great signage opportunities
- Motivated landlord

**PETER H. VENTURA, CCIM** Managing Member / CEO  
peter@pacommercial.com (P) 248.281.9900 (C) 734.751.5600

**MATTHEW J. SCHIFFMAN** Senior Associate  
matt@pacommercial.com (P) 248.281.9907 (C) 248.943.6449



**P.A. COMMERCIAL**  
Corporate & Investment Real Estate

26555 Evergreen Road, Suite 1500 • Southfield, MI 48076

31450 W 7 MILE RD, LIVONIA, MI

// ADDITIONAL PHOTOS



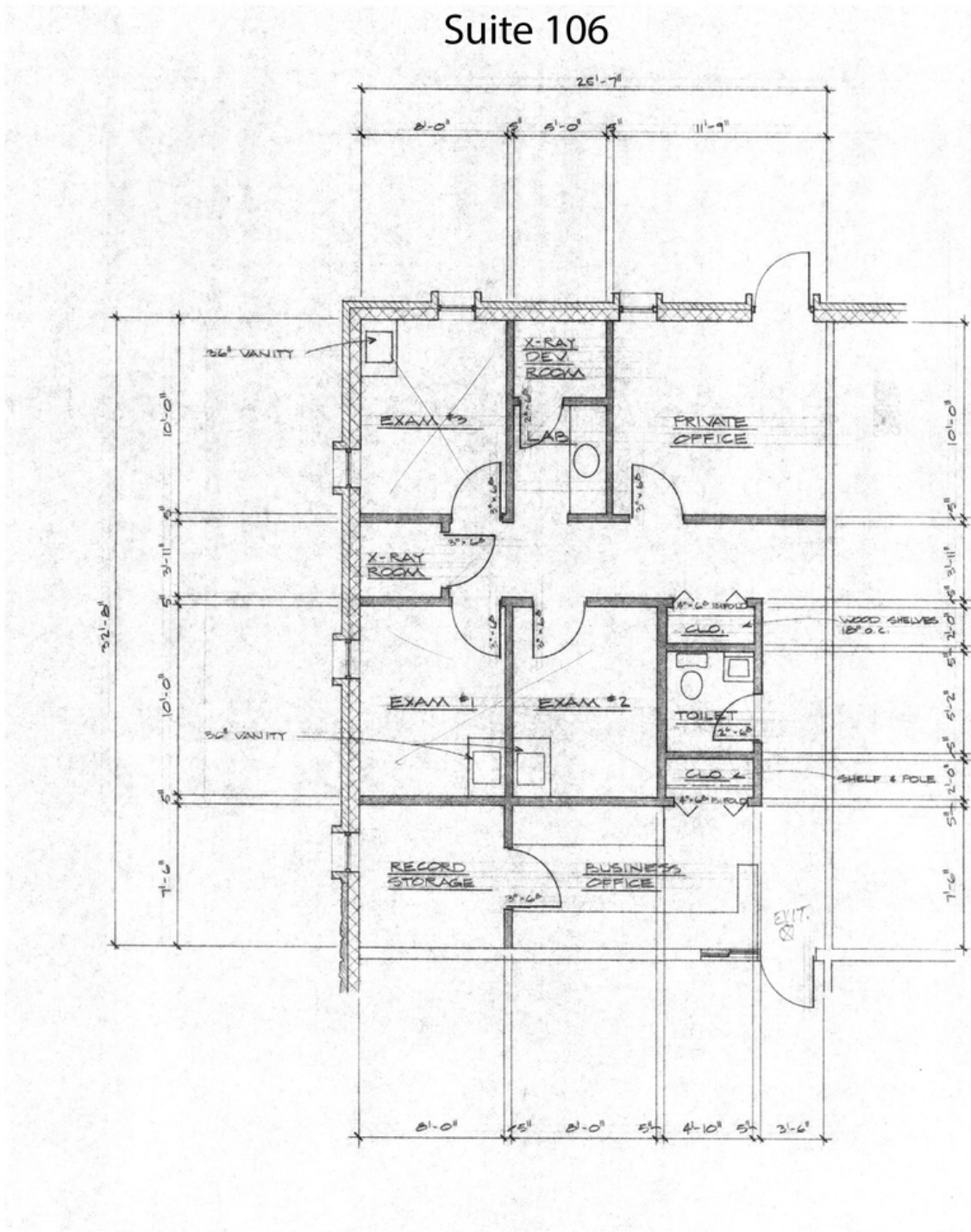
**PETER H. VENTURA, CCIM** Managing Member / CEO  
peter@pacommercial.com (P) 248.281.9900 (C) 734.751.5600

**MATTHEW J. SCHIFFMAN** Senior Associate  
matt@pacommercial.com (P) 248.281.9907 (C) 248.943.6449



26555 Evergreen Road, Suite 1500 • Southfield, MI 48076

### Suite 106



**PETER H. VENTURA, CCIM** Managing Member / CEO  
 peter@pacommercial.com (P) 248.281.9900 (C) 734.751.5600

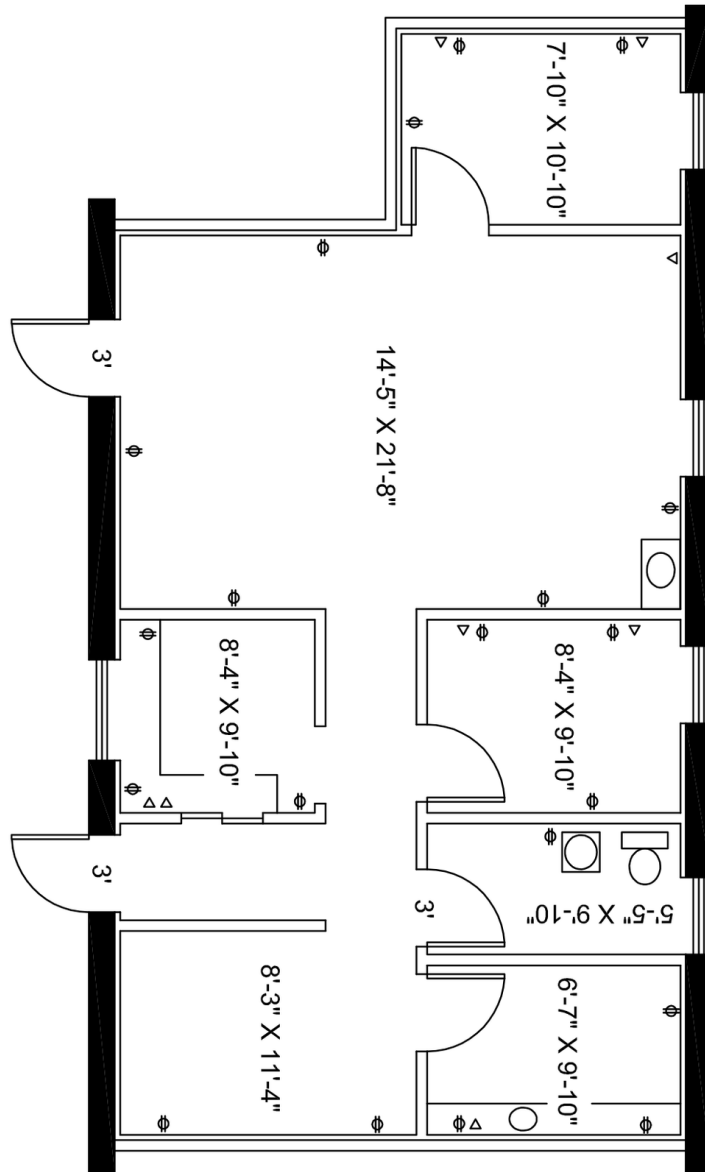
**MATTHEW J. SCHIFFMAN** Senior Associate  
 matt@pacommercial.com (P) 248.281.9907 (C) 248.943.6449



26555 Evergreen Road, Suite 1500 • Southfield, MI 48076



### Suite 108



**PETER H. VENTURA, CCIM** Managing Member / CEO  
peter@pacommercial.com (P) 248.281.9900 (C) 734.751.5600

**MATTHEW J. SCHIFFMAN** Senior Associate  
matt@pacommercial.com (P) 248.281.9907 (C) 248.943.6449



**P.A. COMMERCIAL**  
Corporate & Investment Real Estate

26555 Evergreen Road, Suite 1500 • Southfield, MI 48076

We obtained the information above from sources we believe to be reliable. However, we have not verified its accuracy and make no guarantee, warranty or representation about it. It is submitted subject to the possibility of errors, omissions, change of price, rental or other conditions, prior sale, lease or financing, or withdrawal without notice. We include projections, opinions, assumptions or estimates for example only, and they may not represent current or future performance of the property. You and your tax and legal advisors should conduct your own investigation of the property and transaction.

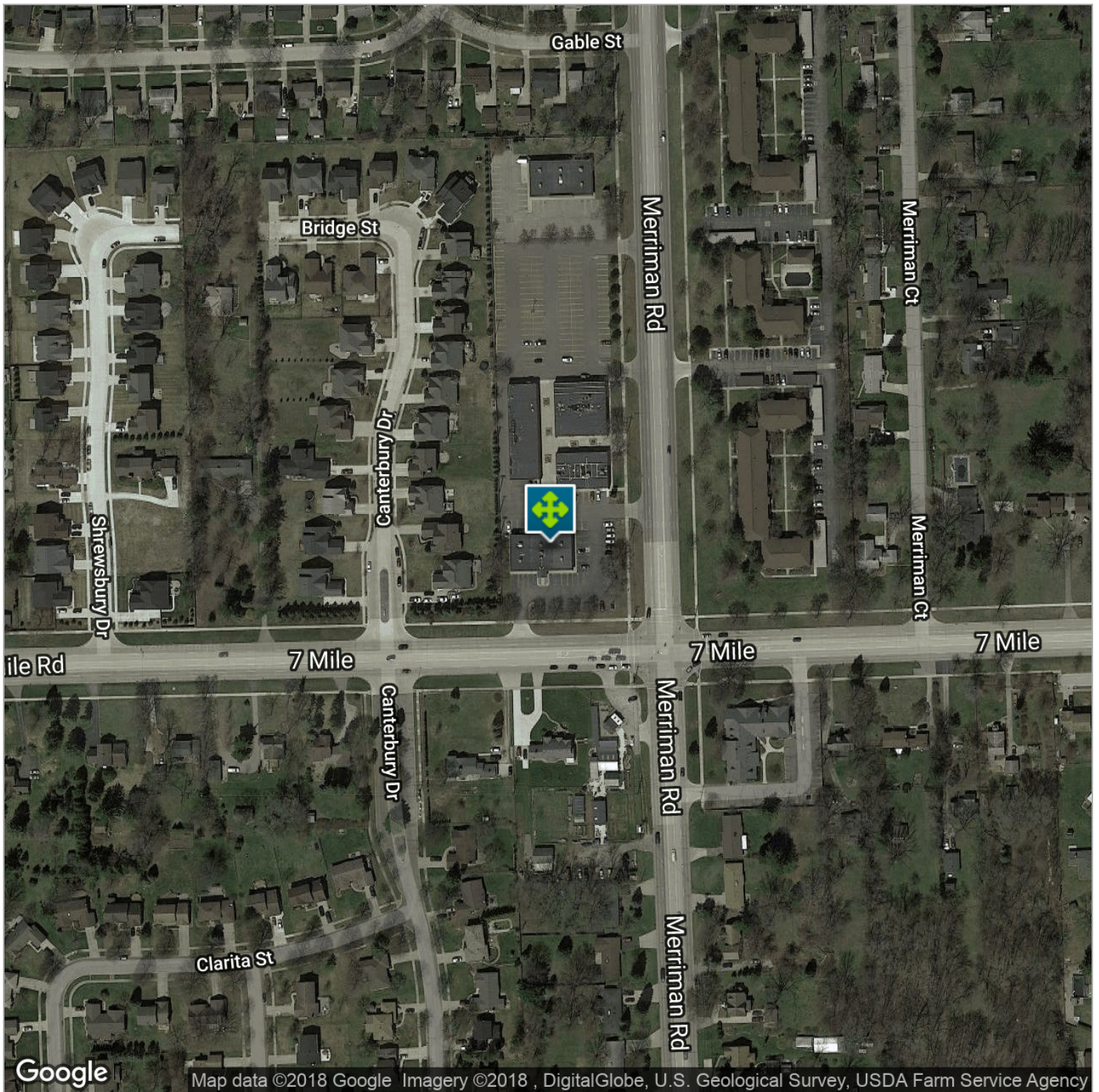


**PETER H. VENTURA, CCIM** Managing Member / CEO  
peter@pacommercial.com (P) 248.281.9900 (C) 734.751.5600

**MATTHEW J. SCHIFFMAN** Senior Associate  
matt@pacommercial.com (P) 248.281.9907 (C) 248.943.6449



26555 Evergreen Road, Suite 1500 • Southfield, MI 48076



**PETER H. VENTURA, CCIM** Managing Member / CEO  
peter@pacommercial.com (P) 248.281.9900 (C) 734.751.5600

**MATTHEW J. SCHIFFMAN** Senior Associate  
matt@pacommercial.com (P) 248.281.9907 (C) 248.943.6449

 **P.A. COMMERCIAL**  
Corporate & Investment Real Estate

26555 Evergreen Road, Suite 1500 • Southfield, MI 48076

We obtained the information above from sources we believe to be reliable. However, we have not verified its accuracy and make no guarantee, warranty or representation about it. It is submitted subject to the possibility of errors, omissions, change of price, rental or other conditions, prior sale, lease or financing, or withdrawal without notice. We include projections, opinions, assumptions or estimates for example only, and they may not represent current or future performance of the property. You and your tax and legal advisors should conduct your own investigation of the property and transaction