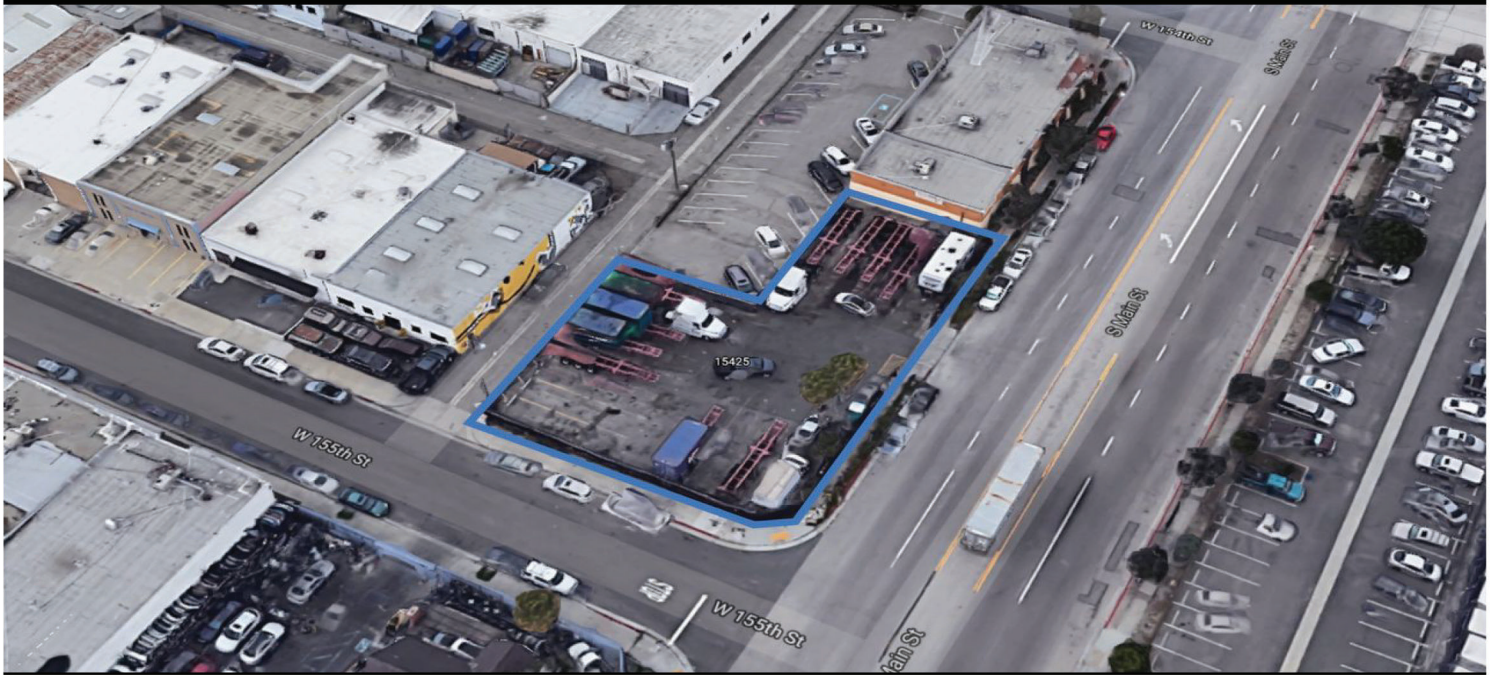


Available Acres 0.29

Land For Lease

Available SF 12,500



**Address:** 15425 S Main St, Gardena, CA 90248  
**Cross Streets:** S Main Street/W 155th St

Available Now  
 Unincorporated LA County  
 Ideal Truck/Container Yard  
 Gated, Secure

<b>Lease Rate/Mo:</b>	Negotiable	<b>Available Acres:</b>	0.29 Ac	<b>Gas:</b>		<b>Specific Use:</b>	Industrial
<b>Lease Rate/SF:</b>	TBD	<b>Available SF:</b>	12,500 SF	<b>Water:</b>	Yes	<b>Zoning:</b>	M2
<b>Lease Type:</b>		<b>Building SF:</b>	0 SF	<b>Sewer:</b>		<b>Rail Service:</b>	No
<b>Lease Terms:</b>	Acceptable to Owner	<b>Yard:</b>	Fenced	<b>Electric:</b>	Yes	<b>Market Area:</b>	Carson/Compton
<b>Sale Price/SF:</b>	NFS			<b>Fiber:</b>		<b>APN:</b>	6129007031
<b>Sale Price:</b>	NFS						

**Listing Company:** The Klabin Company  
**Agents:** [Tyler Rollemma 310-329-9000](#), [Scott Andersen 562-308-7737](#), [Matt Stringfellow 310-329-9000](#)

**Listing #:** 6750c9933c9f5b627a17117f

**Listing Date:** 12/04/2024

**FTCF:** CB250N000S000/A0AA

**Notes:** Call brokers for commission information.



This information supplied herein is from sources we deem reliable. It is provided without any representation, warranty or guarantee, expressed or implied as to its accuracy. Prospective Buyer or Tenant should conduct an independent investigation and verification of all matters deemed to be material, including, but not limited to, statements of income and expenses. Consult your attorney, accountant, or other prof. advisor.



**KLABIN**  
 A member of the CORFAC International network

**KLABIN.COM**

19700 S. VERMONT AVENUE, SUITE 100  
 TORRANCE, CA 90502

DRE 00824993

**310.329.9000**

