

# Dunn Village Shopping Center

6765 Dunn Ave, Jacksonville, FL 32219 | Duval County

For Leasing info:

Michele Hanash  
734-330-5530  
mh@saglo.com

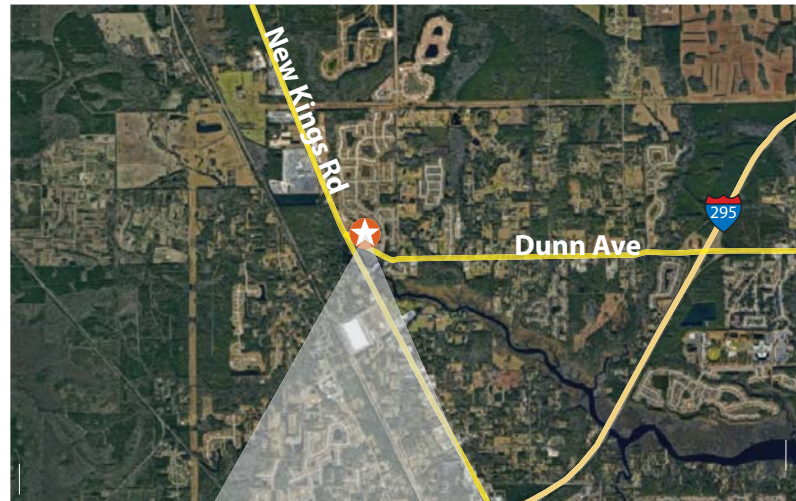
Carlos Guzman  
305-704-3112  
carlos@saglo.com



## Unique Attributes

- Dunn Village is located at the intersection of Dunn Avenue and New Kings Road (US 1).
- Anchored by a strong performing Rowe's IGA Supermarket.
- Join Rowe's IGA, Family Dollar, and Subway.
- Outparcels available for ground lease or sale.
- Jr Box space available of up to 10,000 sf.

## Area Map



Size of Center	72,728 SF
Daily Traffic Count	26,365 Cars
Parking	377 (5.18/1,000 SF)

## 2017 Demographics

	1 MILE	3 MILES	5 MILES
2017 Estimated Total Population	1,986	15,161	45,811
Est. Annual Population Growth 2017-22	0.9%	1.1%	1.3%
Average Household Income	\$64,838	\$57,032	\$52,240
Median Age	34.2	37.1	38.6





Last Updated:  
11/17/17



	B-330 1,800 SF	AVAILABLE	B-329 1,200 SF		B-328 1,200 SF	AVAILABLE	B-327 1,200 SF	AVAILABLE	B-326 1,200 SF	AVAILABLE	B-325 1,200 SF	AVAILABLE	B-324 1,200 SF	HOT WOK	B-323 1,200 SF	NAILS	B-322 1,200 SF	LIQUORS	B-318 8,000 SF		AVAILABLE	D-317 1,200 SF	AVAILABLE	D-316 1,200 SF	BARBERSHOP	D-306 34,928 SF		AVAILABLE	F-301 10,000 SF	AVAILABLE	G-205 1,200 SF		G-204 1,200 SF	AVAILABLE	G-203 1,200 SF	AVAILABLE	G-201 2,400 SF	
--	-------------------	-----------	-------------------	--	-------------------	-----------	-------------------	-----------	-------------------	-----------	-------------------	-----------	-------------------	---------	-------------------	-------	-------------------	---------	-------------------	--	-----------	-------------------	-----------	-------------------	------------	--------------------	--	-----------	--------------------	-----------	-------------------	--	-------------------	-----------	-------------------	-----------	-------------------	--



**Key**

- Dumpster
- Available
- Not in Center (NIC)
- Ingress/Egress
- Traffic Light
- Pylon