



CLASS A OFFICES FOR SUBLEASE

REFLECTIONS III

208 GOLDEN OAK CT, VIRGINIA BEACH, VA 23452



REFLECTIONS III

208 GOLDEN OAK CT, VIRGINIA BEACH, VA 23452

PROPERTY OVERVIEW



OFFERING SUMMARY

Available SF:	2,171 SF
Lease Rate:	\$21.25 SF/yr (Full Service)
Year Built:	1988
Building Size:	63,696 SF
Renovated:	2018

AVAILABLE SPACES

	SF
Suite 220	2,171 SF

PROPERTY OVERVIEW

Four story, Class A, brick and glass office building of modern design located in the desirable Reflections Office Park in the Lynnhaven Corridor of Virginia Beach. This meticulously landscaped office park overlooks the London Bridge Creek offering water views and a serene park setting. Parking is ample with 4.5 spaces per 1,000 square feet.

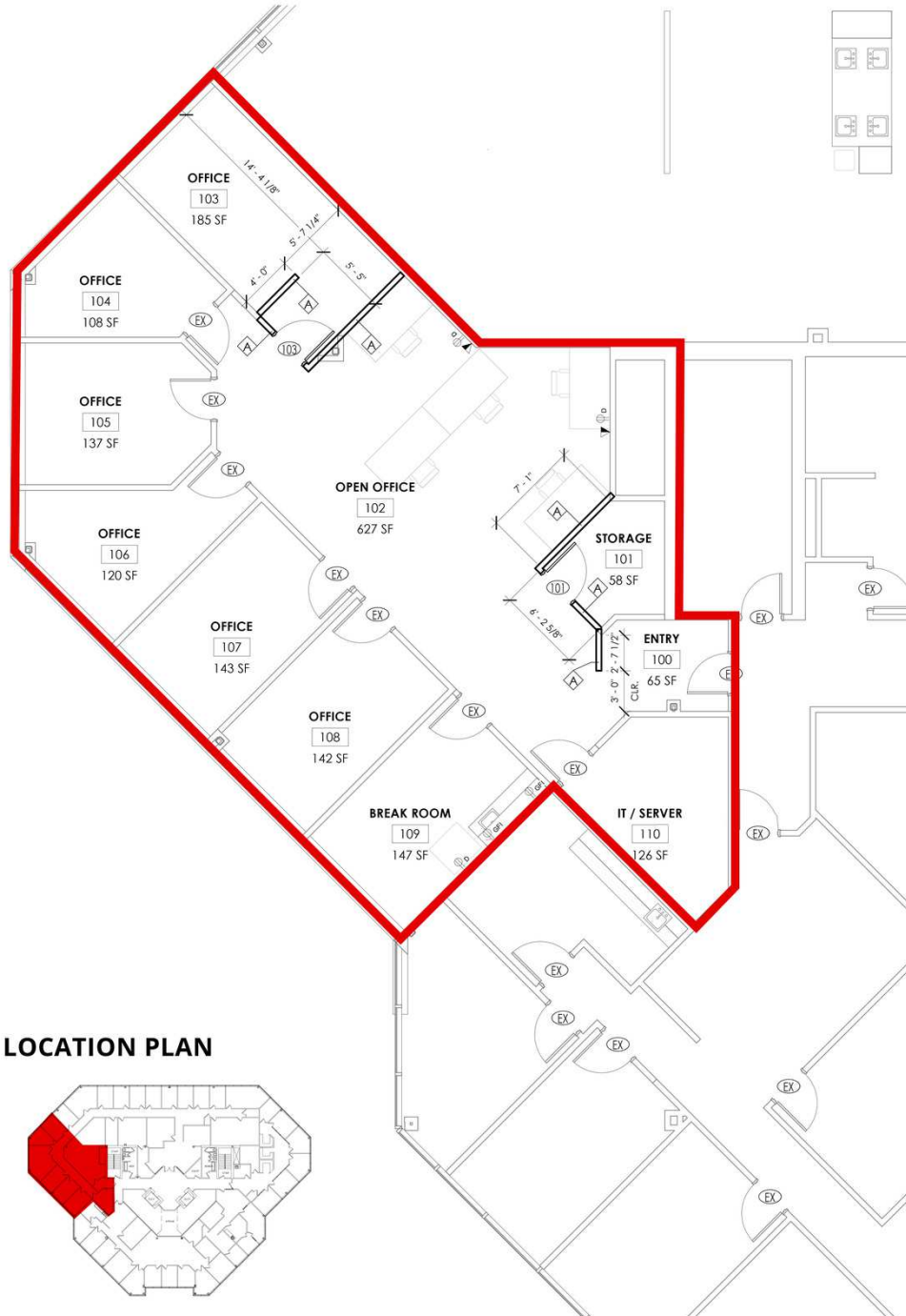
PROPERTY HIGHLIGHTS

- Contemporary architecture
- Class A finishes
- Water views
- Common areas renovated in 2018
- Advanced operating and energy management systems
- An advanced building access and video surveillance system
- Access to fitness facility and common conference room
- On-site day porter

REFLECTIONS III

208 GOLDEN OAK CT, VIRGINIA BEACH, VA 23452

SUITE 220 | 2,171 SF



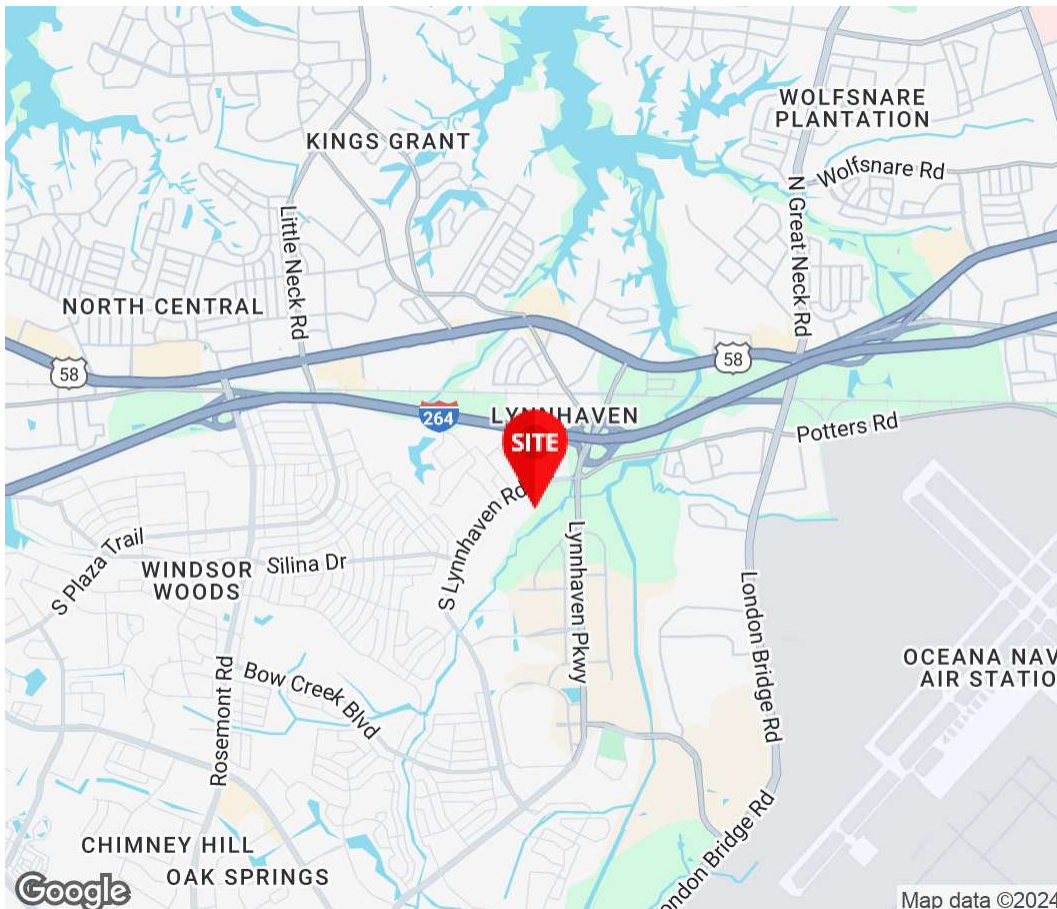
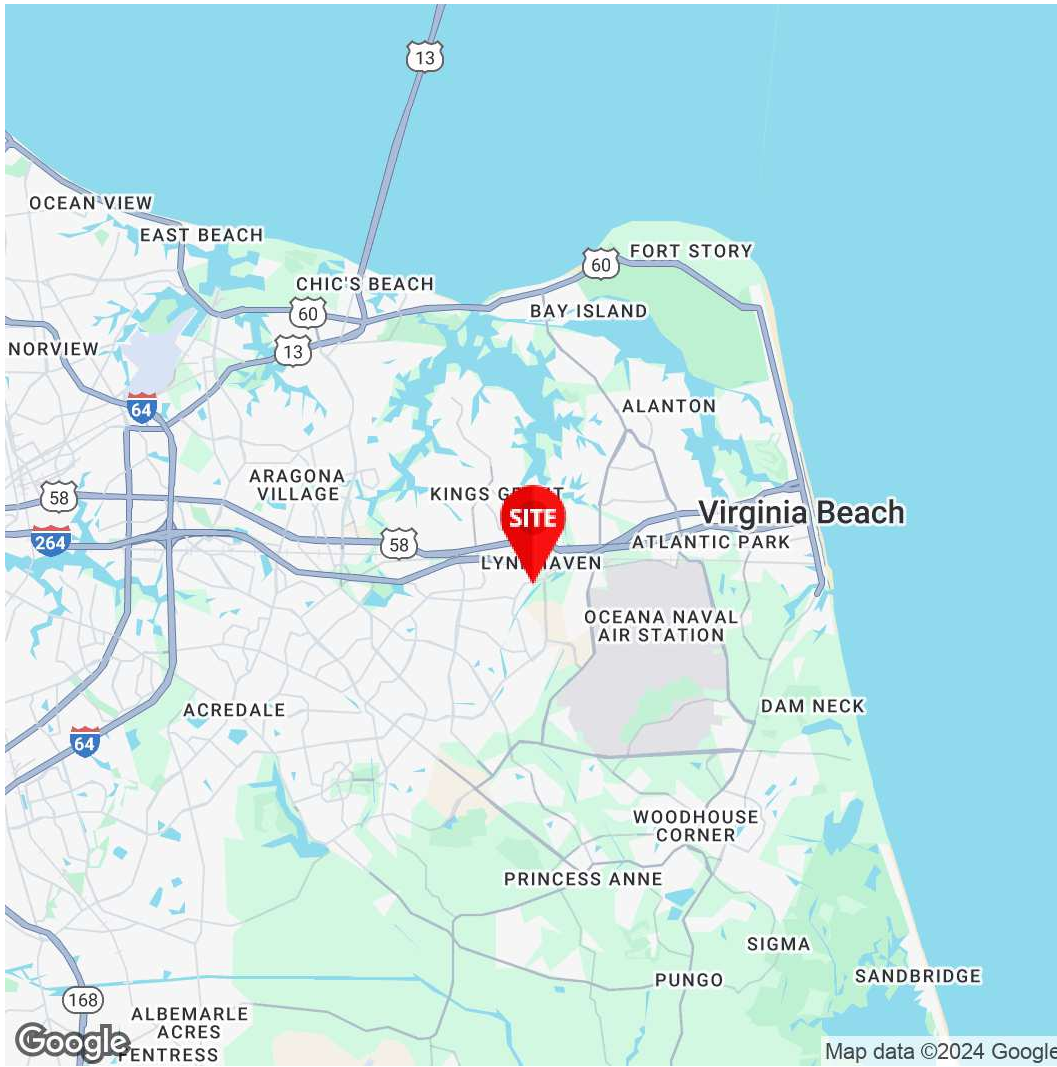
REFLECTIONS III

208 GOLDEN OAK CT, VIRGINIA BEACH, VA 23452

ADDITIONAL PHOTOS



Elizabeth C. Paasch
AVP, Office Leasing And
Sales
757.333.4322
Epaasch@Divaris.Com



The information contained herein should be considered confidential and remains the sole property of Divaris Real Estate, Inc. at all times. Although every effort has been made to ensure accuracy, no liability will be accepted for any errors or omissions. Disclosure of any information contained herein is prohibited except with the express written permission of Divaris Real Estate, Inc.