



| TRENCA & CO REALTY



572

572 SOUTH SALINA STREET | SYRACUSE, NY 13202



572 South Salina Street

- 0.0 mi. Centro Regional Transportation Center
- 0.9 mi. Syracuse University
- 1.0 mi. St. Joseph's Hospital Health Center
- 1.0 mi. Crouse Hospital
- 9.0 mi. Syracuse Hancock International Airport

572

81

N

Situated along the inner perimeter of Downtown Syracuse, at the crossroads of South Salina Street, considered the "Main Street" of the City, and Adams Street, a key commuter route to downtown Syracuse, Syracuse University and nearby major medical centers.

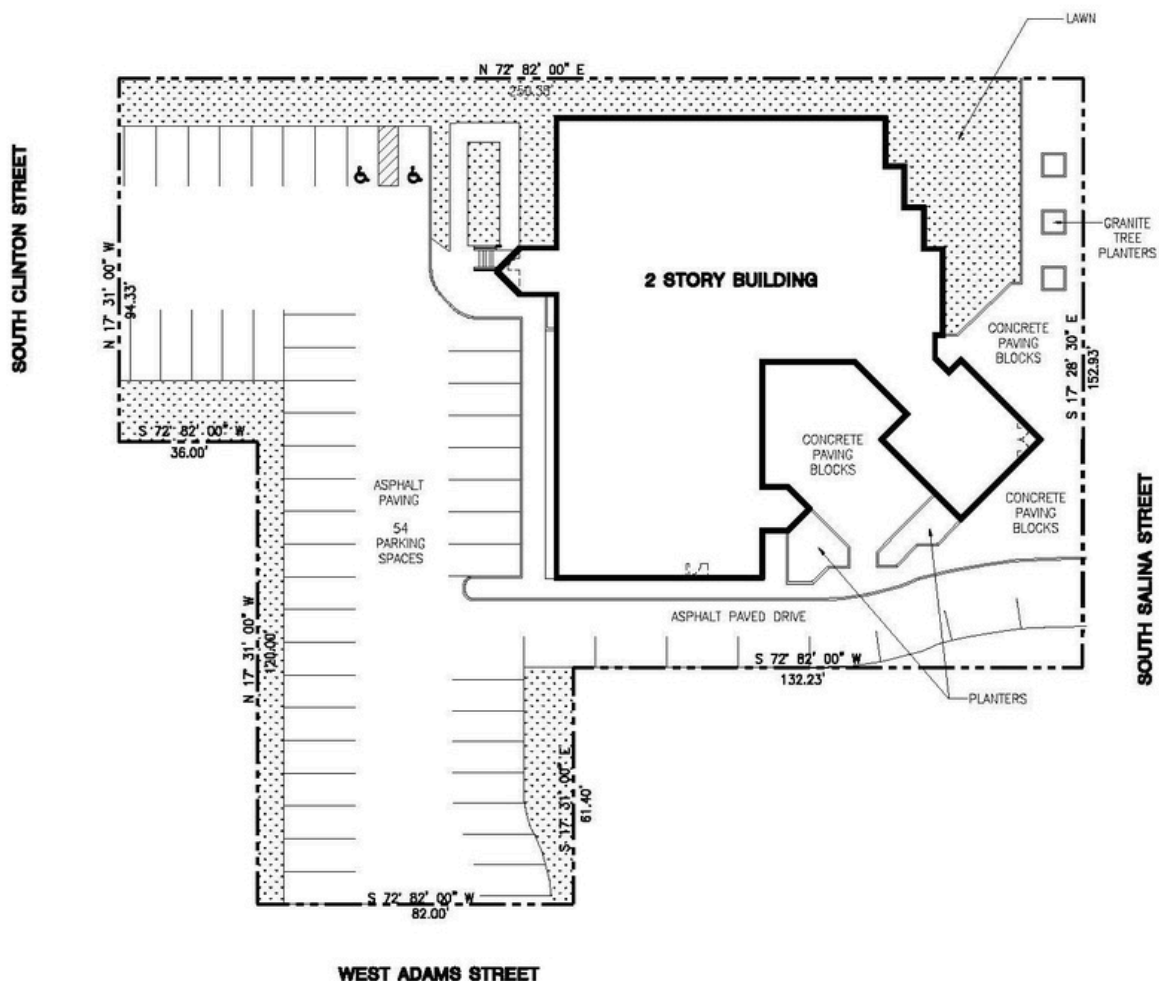
572 is within walking distance from some of the areas largest employers and is also in close proximity to many residential buildings, dining, shopping and entertainment establishments.

Syracuse's main Centro Bus station is located on Salina Street directly across from 572, with many travelers passing through the hub daily.

- 20,943 SF Building
- Outdoor Patio
- Two-story Glass Atrium
- Direct access points from South Salina, South Clinton and West Adams Streets
- Close proximity to I690 E/W; I81 N/S

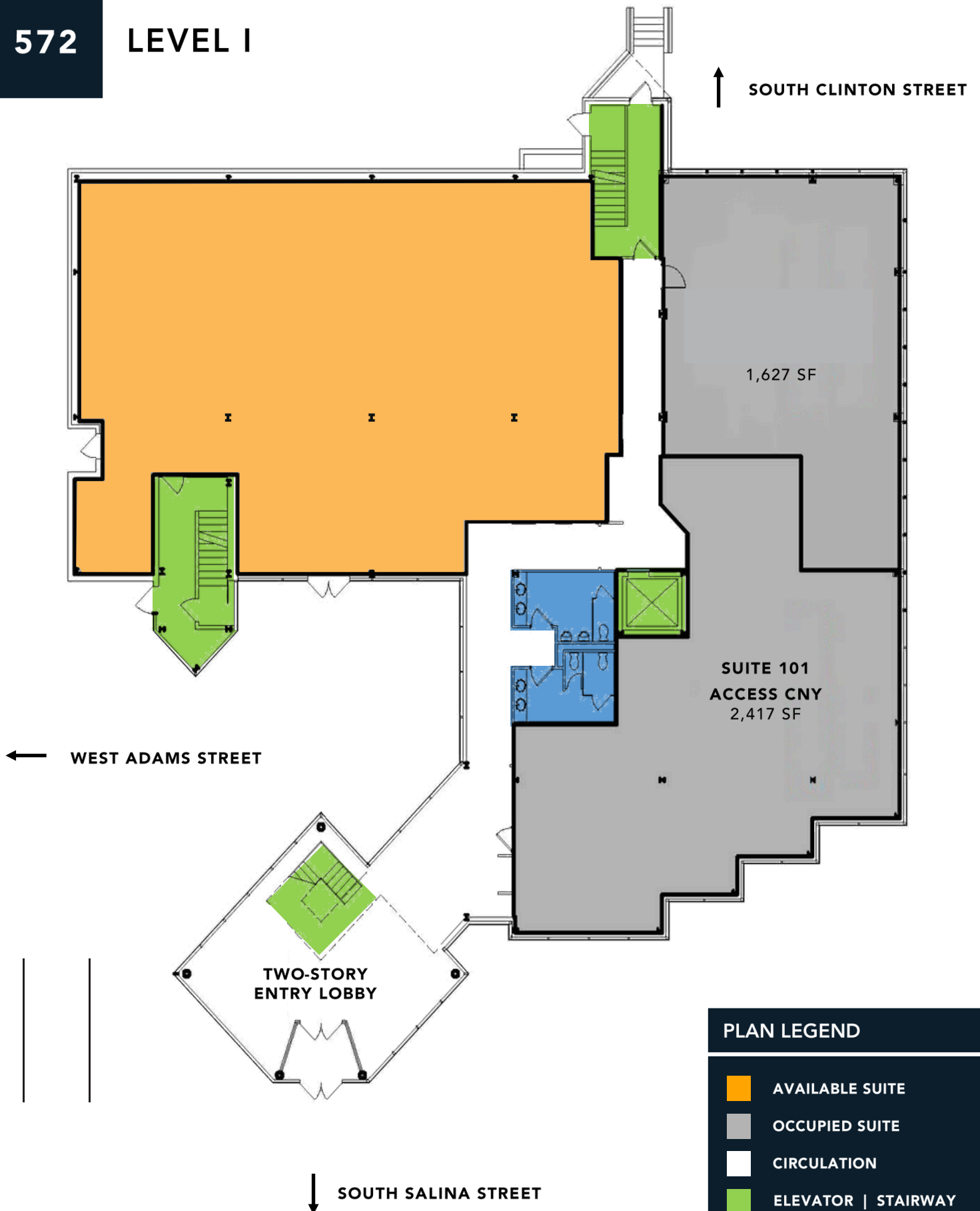


INQUIRIES: JOHN A. TRENCA
315.572.3823



572

LEVEL I

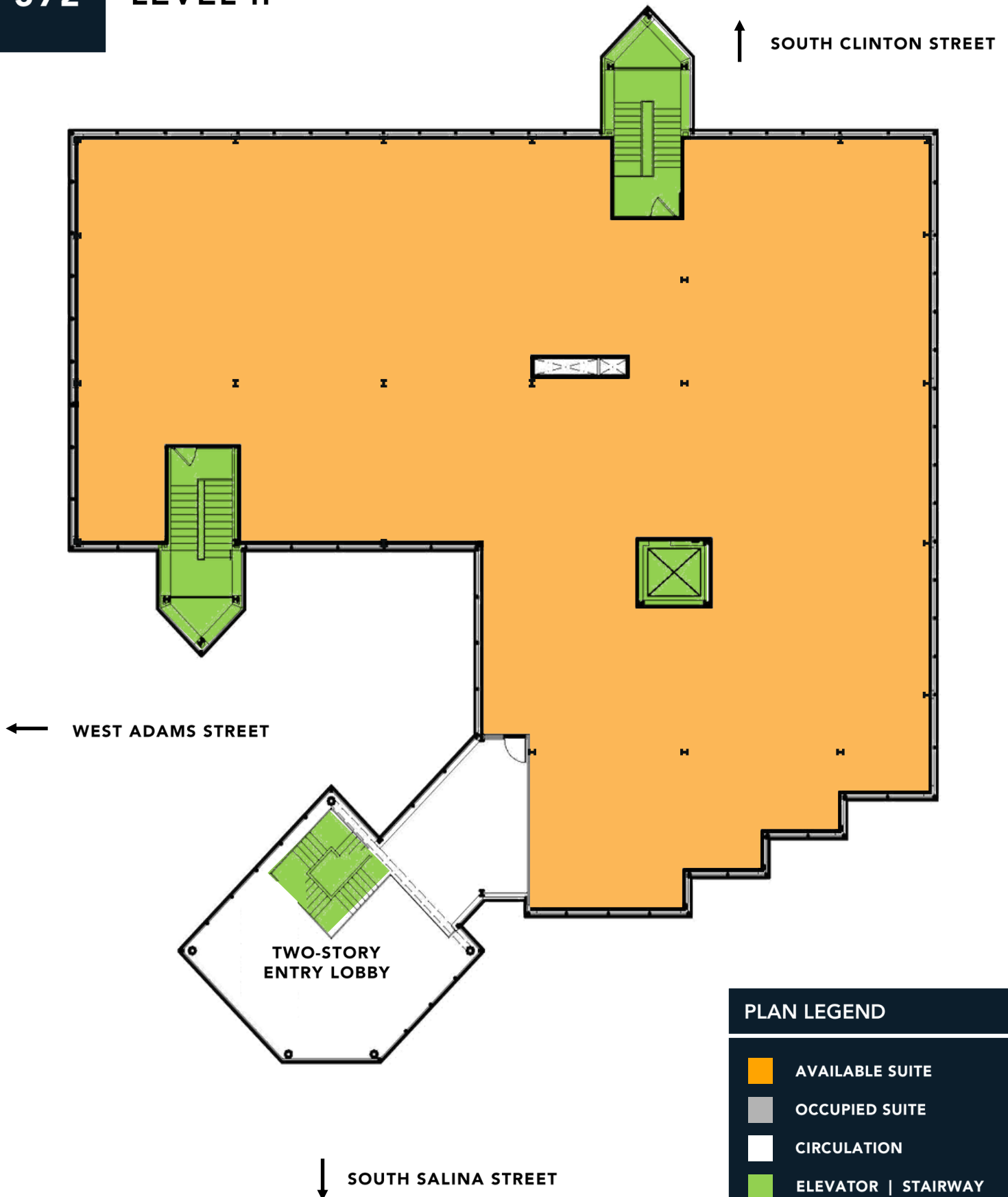


PLAN LEGEND

- AVAILABLE SUITE
- OCCUPIED SUITE
- CIRCULATION
- ELEVATOR | STAIRWAY
- RESTROOM (COMMON)

572

LEVEL II



PLAN LEGEND

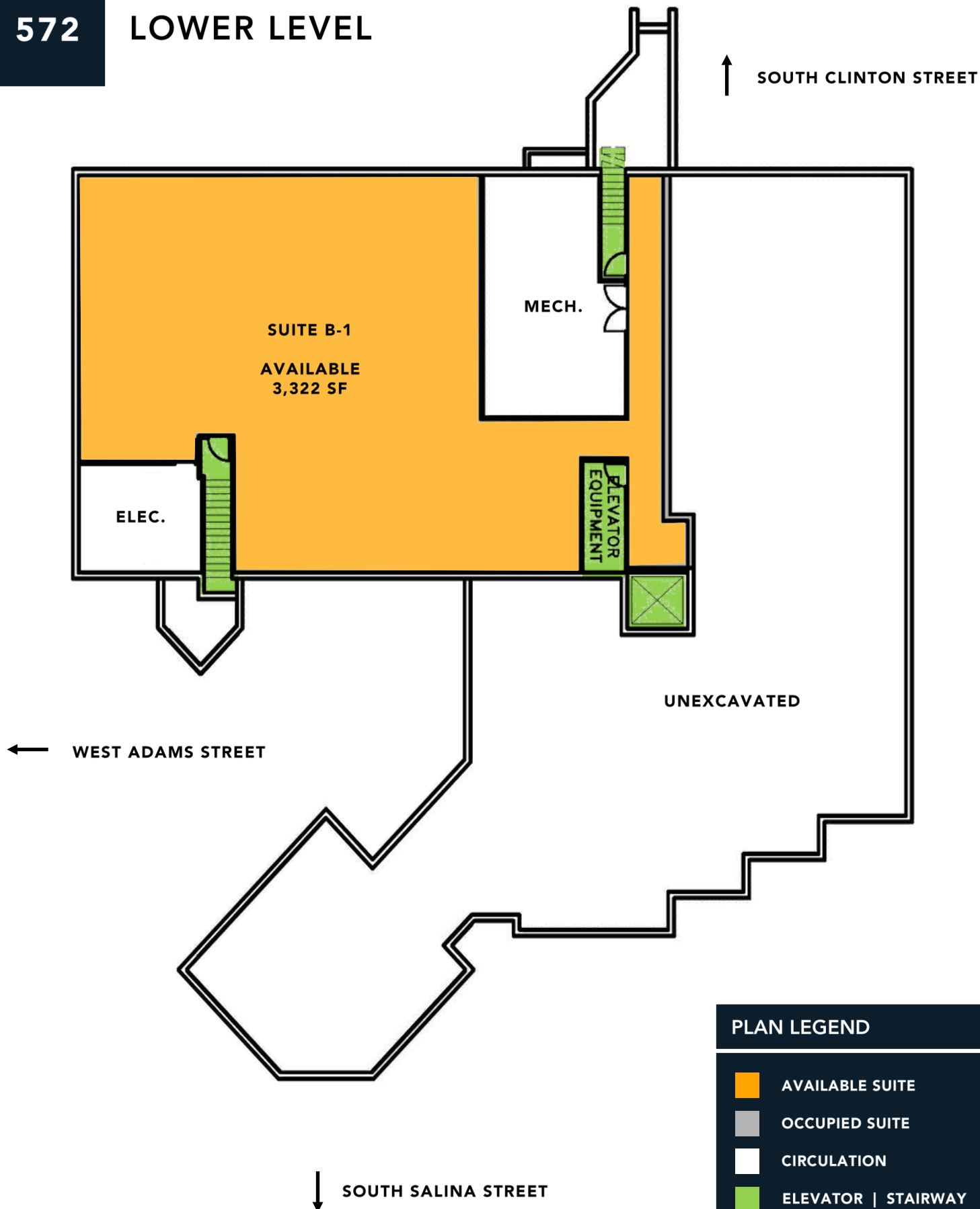
- AVAILABLE SUITE
- OCCUPIED SUITE
- CIRCULATION
- ELEVATOR | STAIRWAY
- RESTROOM (COMMON)



* NOT TO SCALE

572

LOWER LEVEL



PLAN LEGEND

- AVAILABLE SUITE
- OCCUPIED SUITE
- CIRCULATION
- ELEVATOR | STAIRWAY
- RESTROOM (COMMON)

572

572 SOUTH SALINA STREET | SYRACUSE, NY 13202

EXCLUSIVE BROKER

JOHN A. TRENCA
PRINCIPAL BROKER & FOUNDER



EMAIL ADDRESS

john@trencrealty.co



PHONE NUMBER

John: 315.572.3823



WEBSITE

www.trencrealty.co



LICENSE

NY 10491213215



MAILING ADDRESS

5620 Business Ave, Ste
G7, Cicero, NY 13039



TRENCA & CO REALTY

All information deemed reliable but not guaranteed. Buyers and agents to verify all facts, including but not limited to square footage, taxes, zoning, and permitted uses.