

For Sale

1455 S Richland Creek Rd, Sugar Hill, GA 30518
+/- 14.76 acres



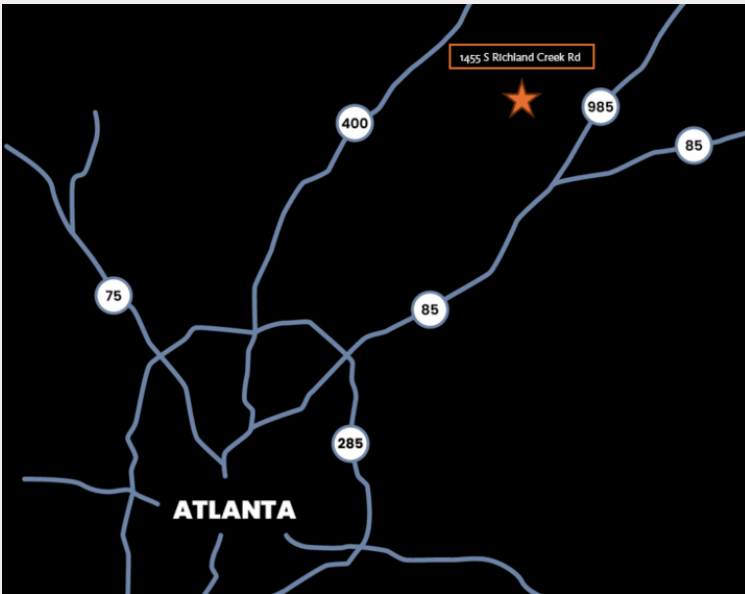
SCOTLAND
WRIGHT
ASSOCIATES

Will Grogan
wgrogan@scotlandwright.com
(404) 797-4126

Brady Powell
brady@scotlandwright.com
(678) 315-2576

Property Overview

1455 S Richland Creek Rd NE
Sugar Hill, GA
30518



Total Site Area: +/- 14.76 ac.

Pad Acres: +/- 3 ac.

Zoning: HM1

Structure Type: Mobile Trailers

Pad Type: Concrete & Gravel

Ideal Uses: Materials Storage
Equipment Rental &
Storage



1455 S Richland Creek Rd NE

Sugar Hill, GA
30518



SCOTLAND
WRIGHT
ASSOCIATES

Will Grogan
wgrogan@scotlandwright.com
(404) 797-4126

Brady Powell
brady@scotlandwright.com
(678) 315-2576

1455 S Richland Creek Rd NE

Sugar Hill, GA
30518



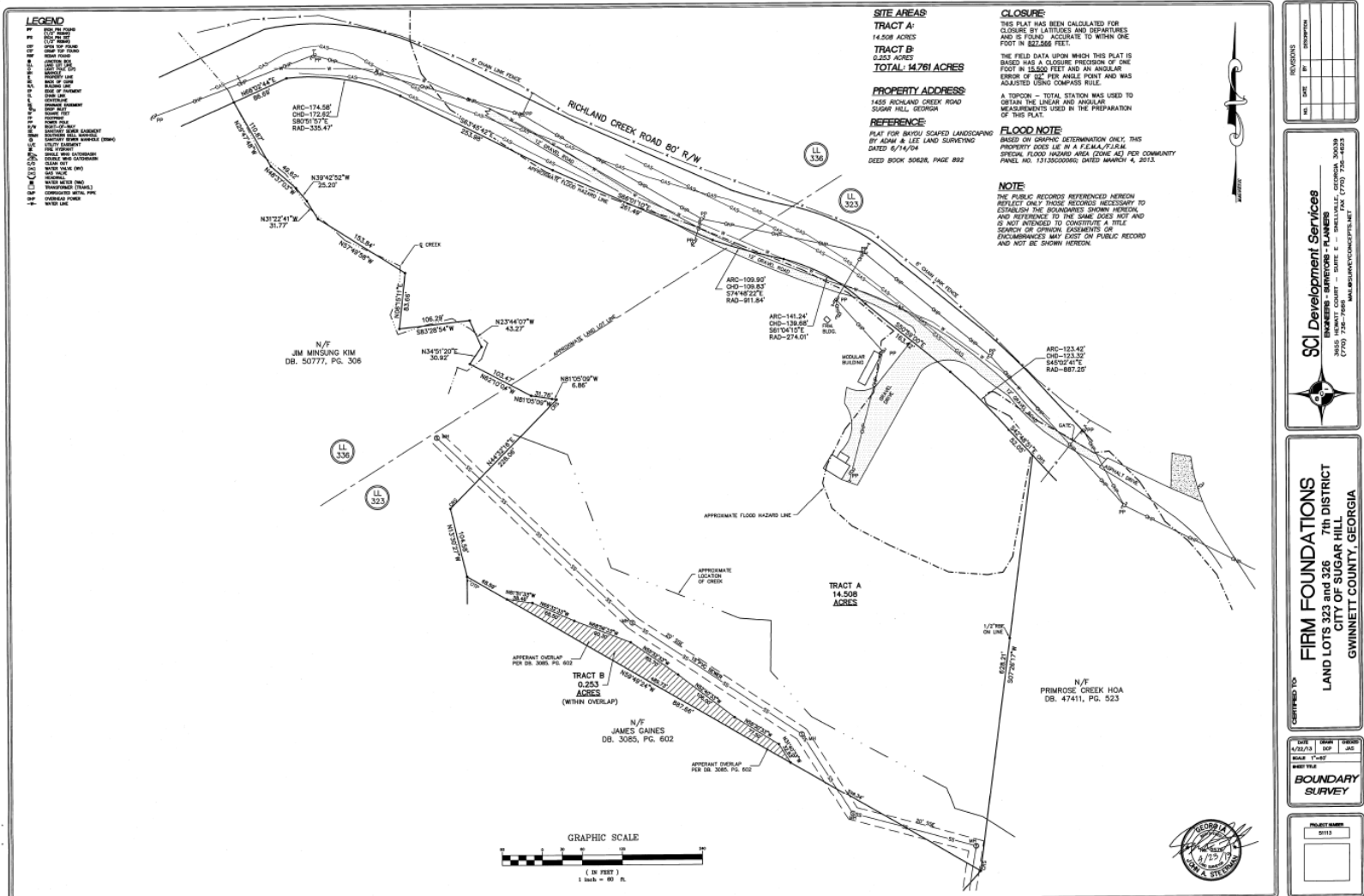
SCOTLAND
WRIGHT
ASSOCIATES

Will Grogan
wgrogan@scotlandwright.com
(404) 797-4126

Brady Powell
brady@scotlandwright.com
(678) 315-2576

1455 S Richland Creek Rd NE

Sugar Hill, GA
30518



NO.	DATE	BY	DESCRIPTION

SC Development Services
 ENGINEERS, SURVEYORS - PLANNERS
 3800 HWY 160, SUITE 100
 CUMMINGS COUNTY, GA 30505
 (770) 782-7400 FAX: (770) 782-7401
 WWW.SCDEVELOPMENTSERVICES.NET

FIRM FOUNDATIONS
 LAND LOTS 323 and 326
 7th DISTRICT
 CITY OF SUGAR HILL
 GWINNETT COUNTY, GEORGIA

BOUNDARY SURVEY

PROJECT NUMBER:
0113



Will Grogan
 wgrogan@scotlandwright.com
 (404) 797-4126

Brady Powell
 brady@scotlandwright.com
 (678) 315-2576