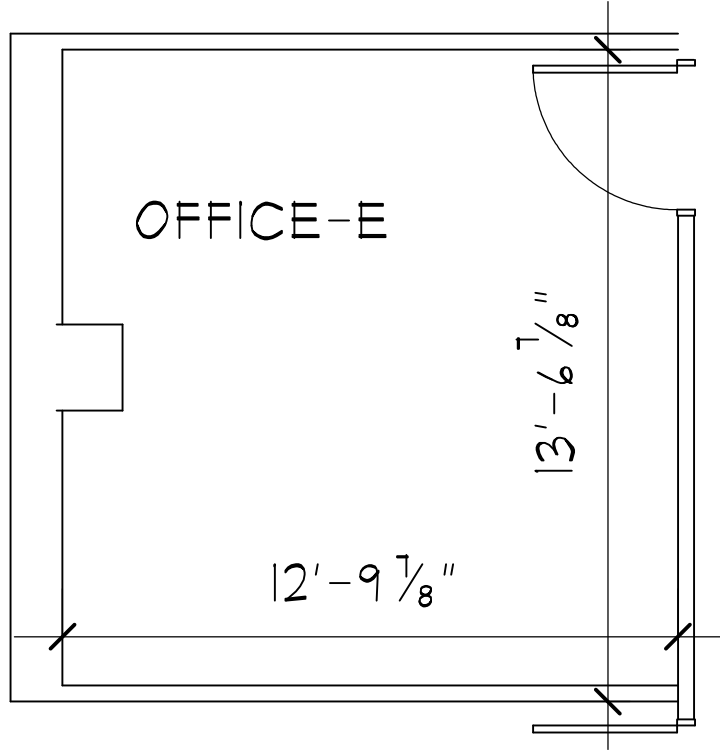




D.C. BROADSTONE II
ARCHITECT

5025 N. CENTRAL EXPWY. DALLAS, TEXAS 214.521.3680

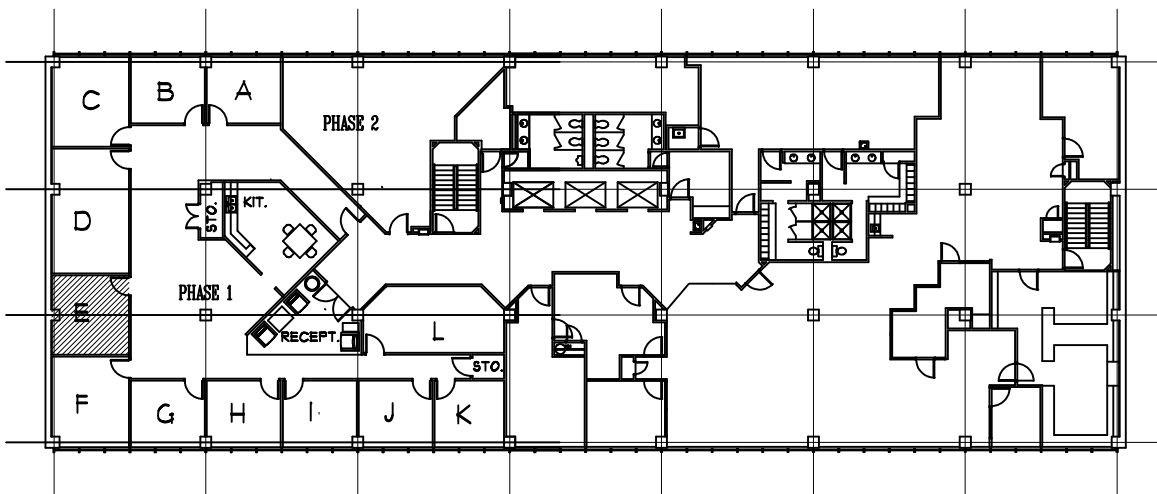


OFFICE PLAN - SUITE 900-E-

SCALE: 1/4" = 1'-0"

RENTABLE SPACE = 200 SQ. FT.
USABLE SPACE = 174 SQ. FT.

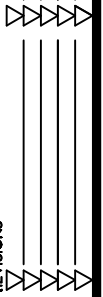
\$625.00_{psf}



KEY PLAN NOT TO SCALE

DATE 08-03-2020

REVISIONS



NEW LAYOUT FOR SUITE 711

TURLEY LAW CENTER

6440 NORTH CENTRAL EXPWY. DALLAS, TEXAS

SHEET NO.

A1.5

OF

