



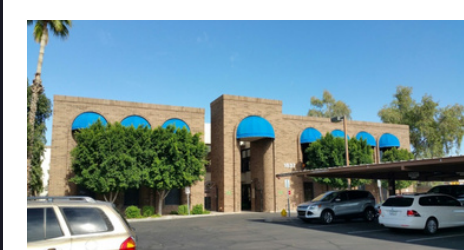
# GENERAL OFFICE FOR LEASE

1837 S MESA DRIVE  
MESA, ARIZONA  
85024



## PROPERTY OVERVIEW

Two story general office building just South of the US 60 on Mesa Drive. Monument signage is available just off of Mesa drive. This property hosts a wide range of tenants and has recently undergone a landscaping refresh.



## BUILDING DETAIL



EASY ACCESS  
FROM THE 60



COVERED/  
UNCOVERED  
PARKING

TERRAFIRMA COMMERCIAL  
REAL ESTATE  
8422 E. SHEA BLVD #100  
SCOTTSDALE, AZ 85260

JONATHAN RIGAU  
SENIOR ASSOCIATE  
C : 480-225-0182  
JONATHAN@TERRAFIRMAAZ.COM

JOHN RIGAU  
PRINCIPAL  
C : 480-225-5000  
JOHN@TERRAFIRMAAZ.COM

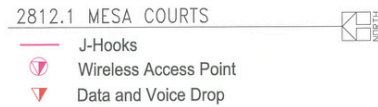
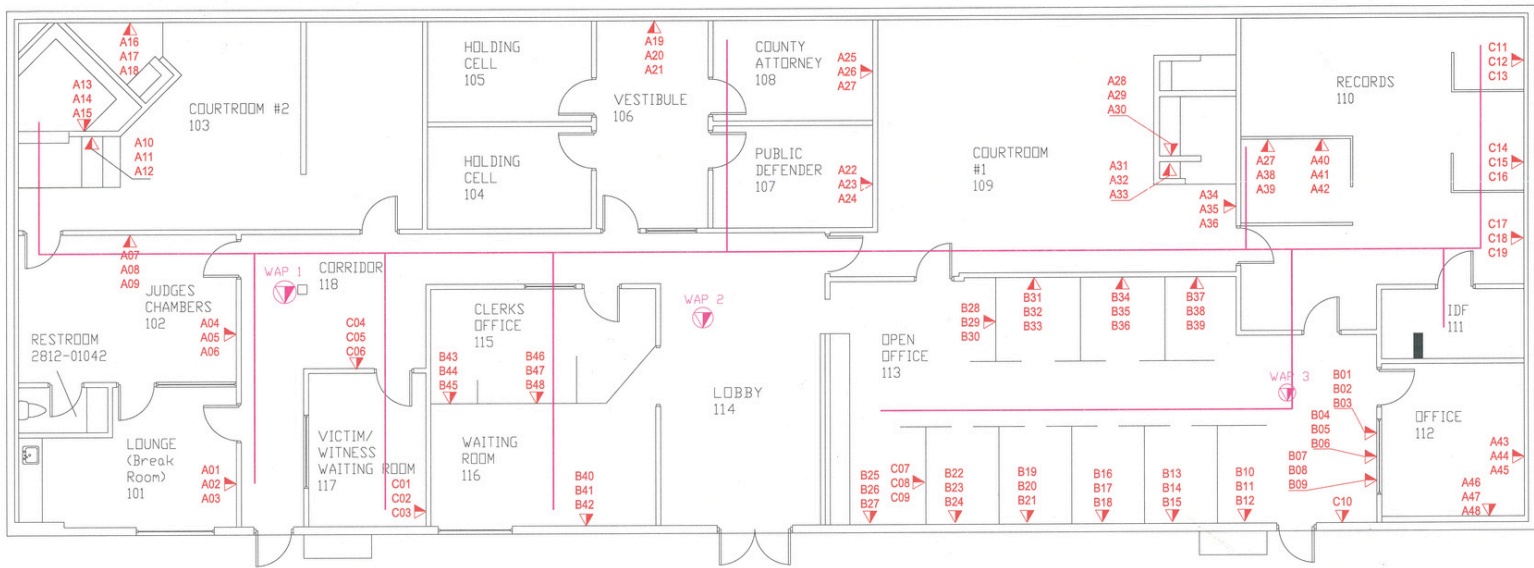
# GENERAL OFFICE FOR LEASE



1837 S MESA DRIVE. MESA, ARIZONA 85204

## B100

8,998 SF



**TERRAFIRMA COMMERCIAL  
REAL ESTATE**  
8422 E. SHEA BLVD #100  
SCOTTSDALE, AZ 85260

**JONATHAN RIGAU  
SENIOR ASSOCIATE**  
C : 480-225-0182  
JONATHAN@TERRAFIRMAAZ.COM

**JOHN RIGAU  
PRINCIPAL**  
C : 480-225-5000  
JOHN@TERRAFIRMAAZ.COM

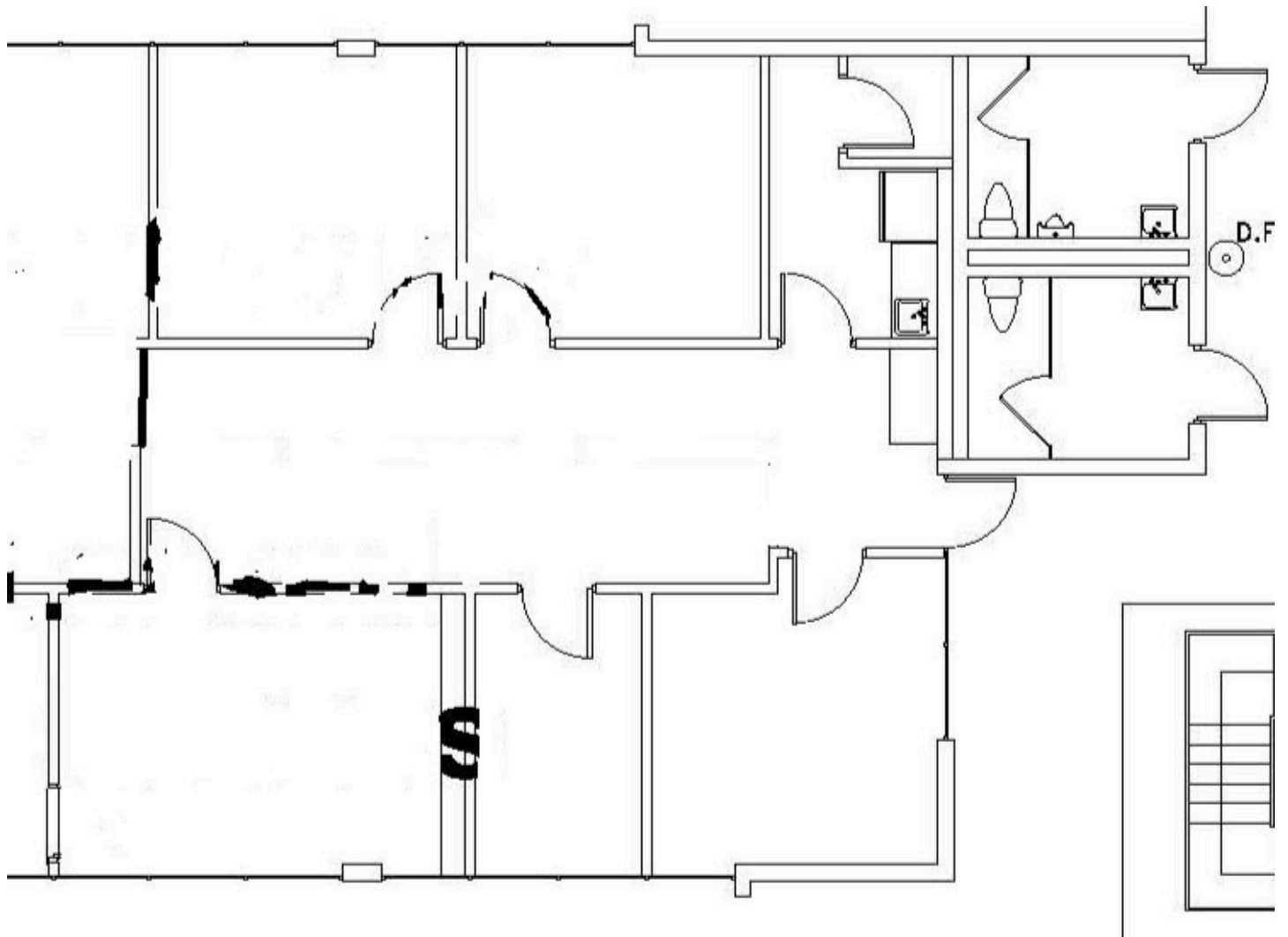
# GENERAL OFFICE FOR LEASE

1837 S MESA DRIVE. MESA, ARIZONA 85204



## C102

1,298 SF



TERRAFIRMA COMMERCIAL  
REAL ESTATE  
8422 E. SHEA BLVD #100  
SCOTTSDALE, AZ 85260

JONATHAN RIGAU  
SENIOR ASSOCIATE  
C : 480-225-0182  
JONATHAN@TERRAFIRMAAZ.COM

JOHN RIGAU  
PRINCIPAL  
C : 480-225-5000  
JOHN@TERRAFIRMAAZ.COM