



NEWMARK

three story **class A** office project
in **downtown walnut creek**

ALPINE



SQUARE



**Curtis
Berrien**

925.974.0129
curtis.berrien@nmrk.com
CA RE License #01210499

**Alex
Grell**

925.974.0108
alex.grell@nmrk.com
CA RE License #01222891

alpine square

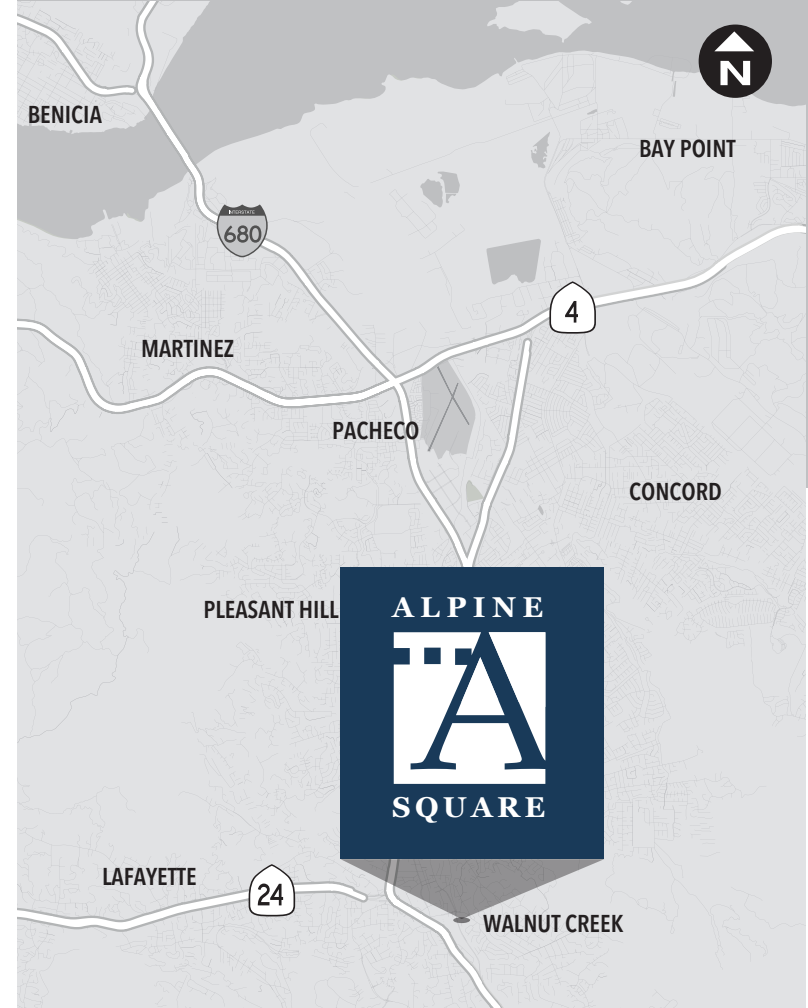
- + Three-story Class A office project
- + Two level underground secure parking garage
- + On-site gym with showers/lockers
- + On-site common conference room
- + Inviting three-story atrium lobby

current availabilities

- SUITE 101 | ±5,774 SF
- SUITE 120 | ±4,420
- SUITE 240 | ±1,967 SF
- SUITE 360 | ±2,168 SF
- SUITE 370 | ±2,396 SF

large blocks

FLOOR 1 | ±11,686 SF | SUITES 100+102+120



location

- + One of Walnut Creek's best located Class A Office projects with immediate access to the heart of Walnut Creek's famed retail district.
- + One block access to North and South I-680. 3 blocks to Highway 24 Access.
- + Convenient and easily accessible for employees and visitors. Existing street parking as well as visitor parking in project garage.



market aerial

1777 BOTELHO DRIVE | WALNUT CREEK



SITE

ANTHROPOLOGIE

POTTERY BARN

WILLIAMS-SONOMA

RH



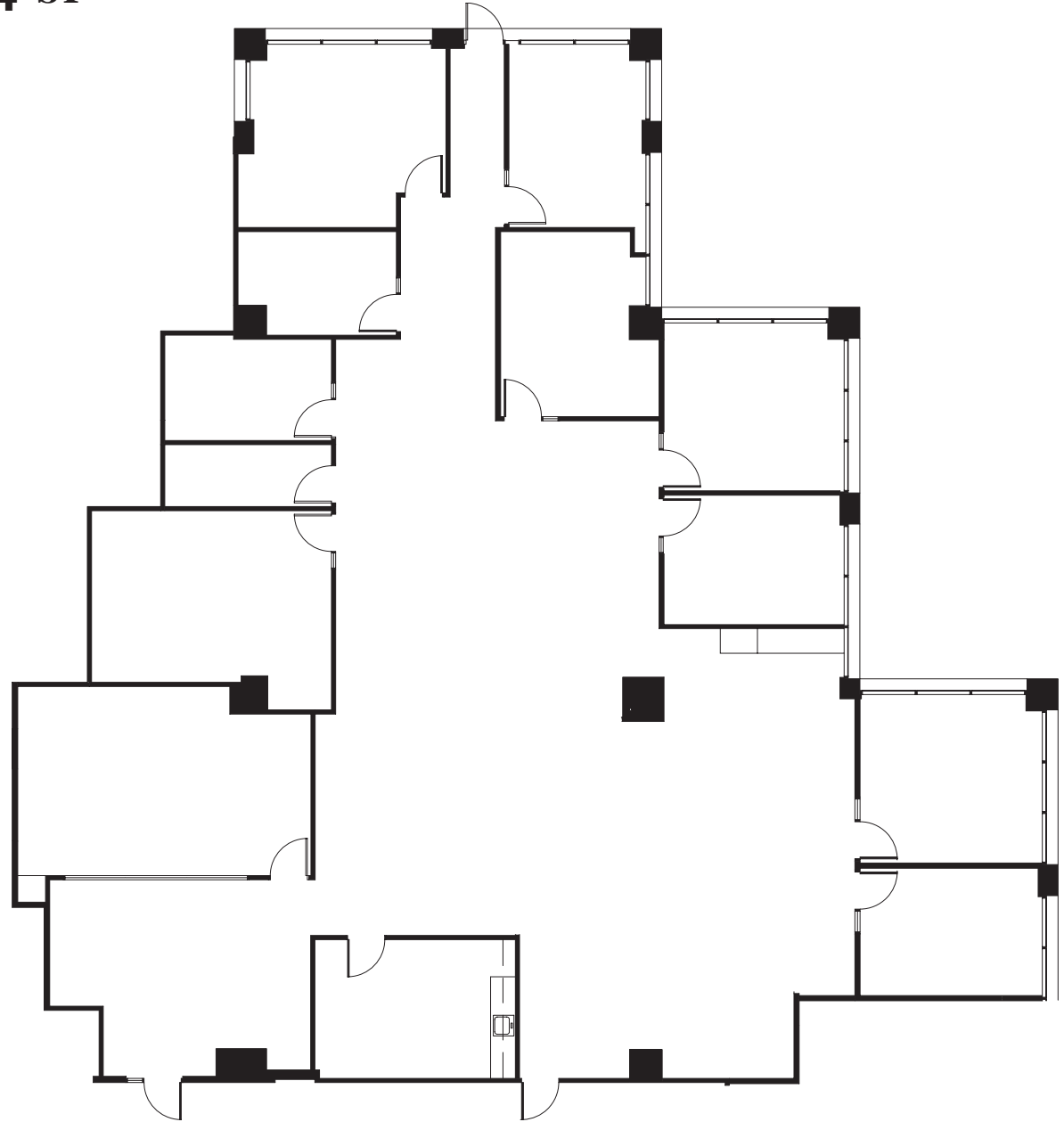
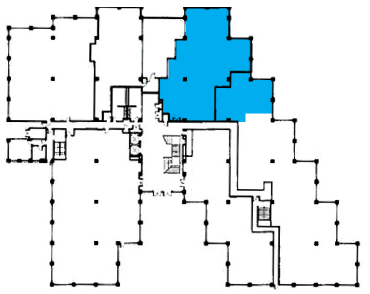
TIFFANY & CO.

vineyard vines

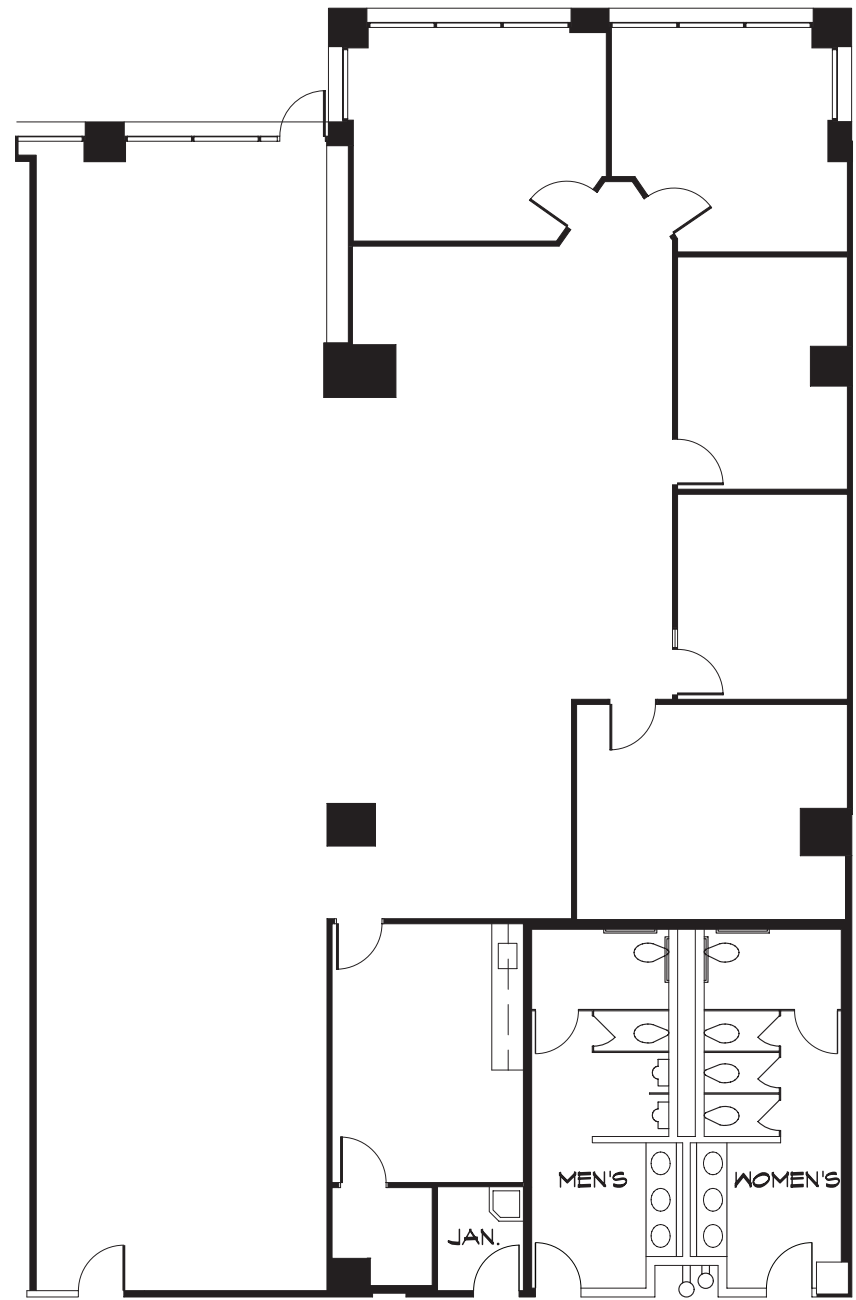
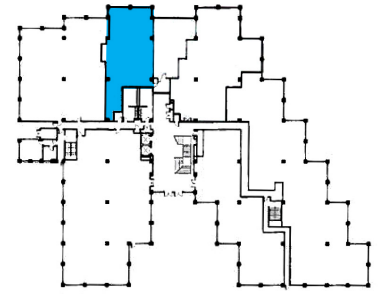

BROADWAY PLAZA
WALNUT CREEK

NORDSTROM
Crate&Barrel
★ macy's

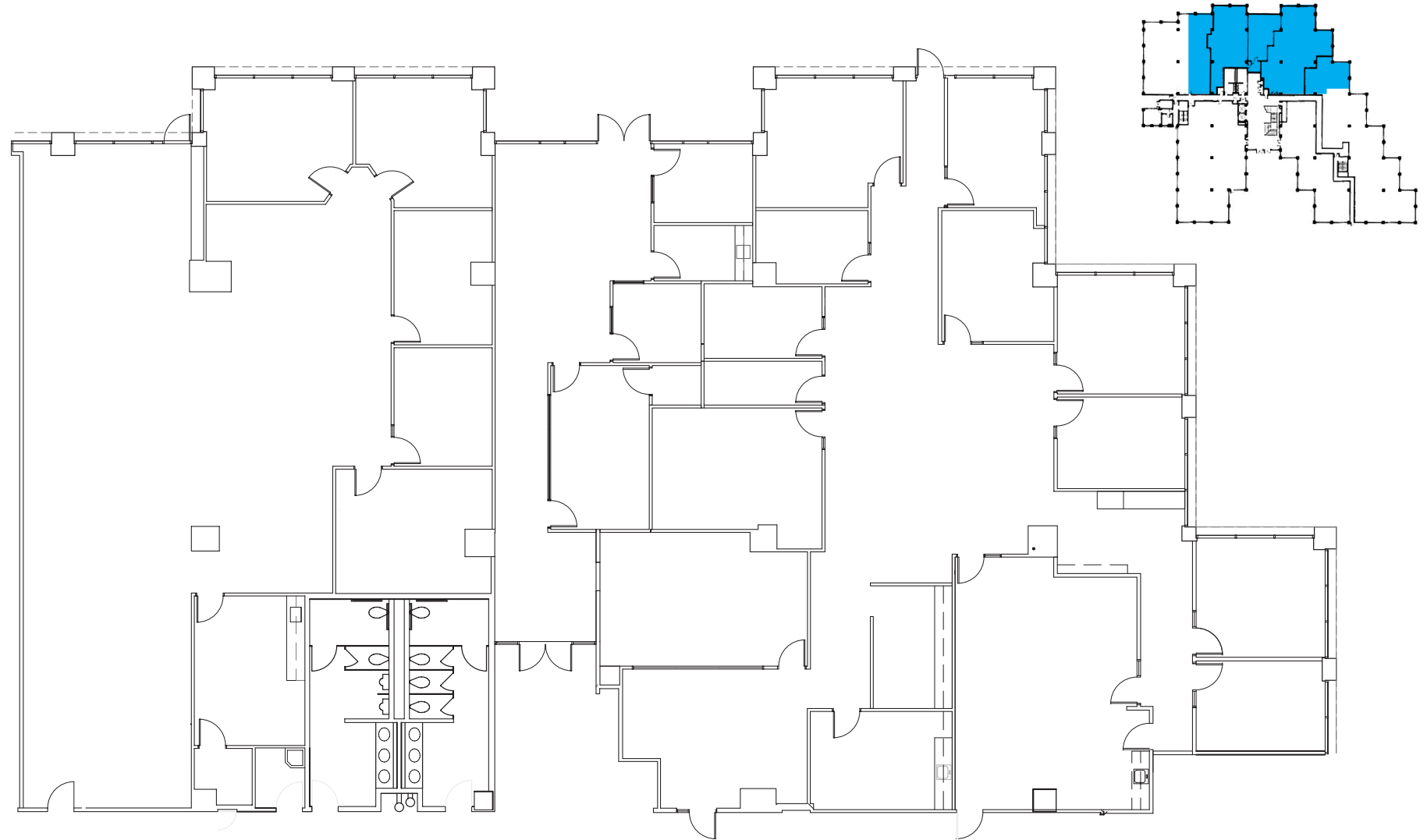
suite 101 | ±5,774 sf



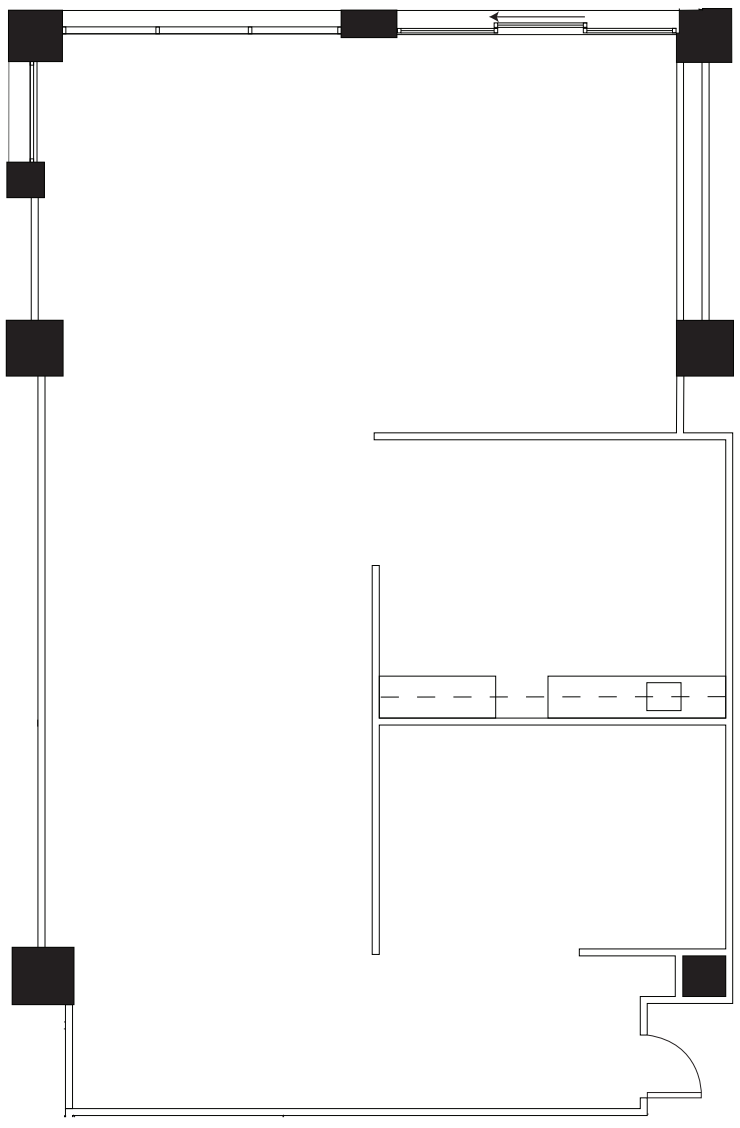
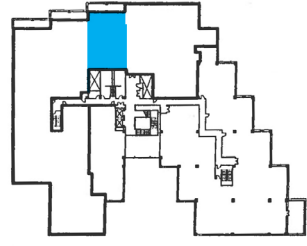
suite 120 | ±4,420 sf



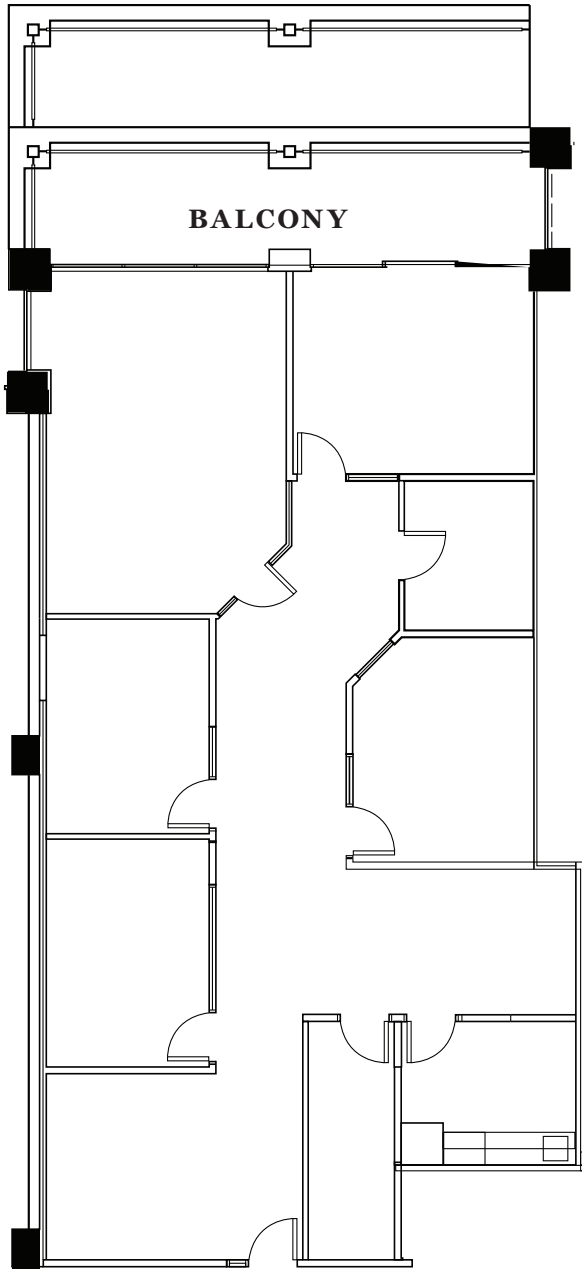
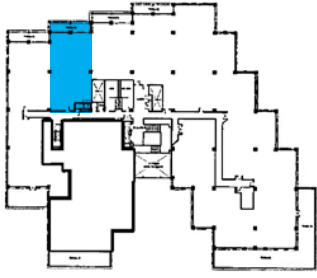
suite 100+102+120 | ±11,686 sf



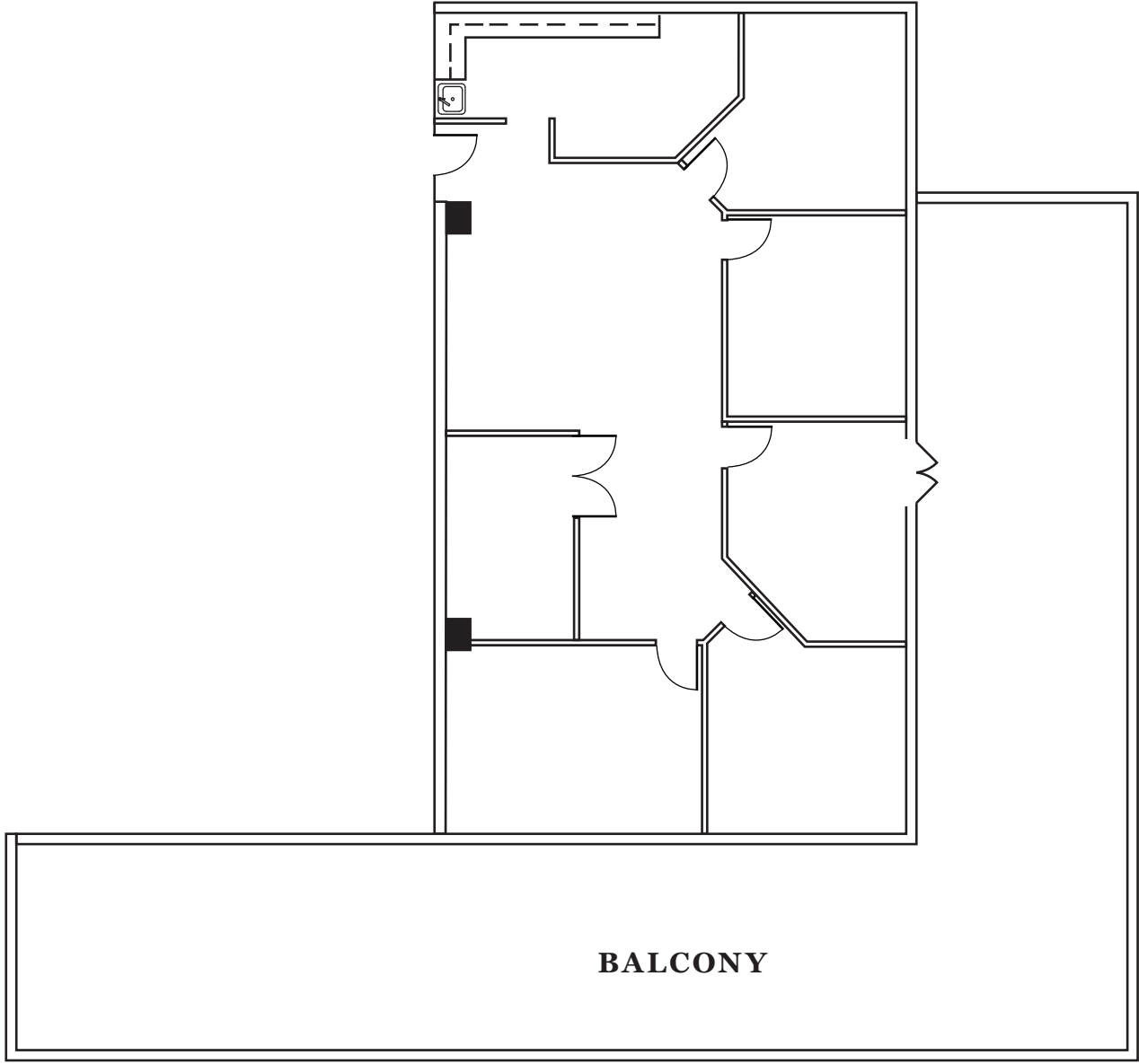
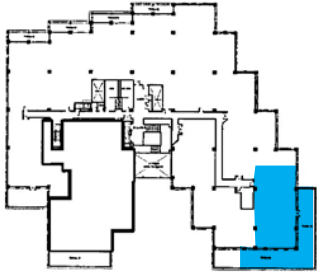
suite 240 | ±1,967 sf



suite 360 | ±2,168 sf



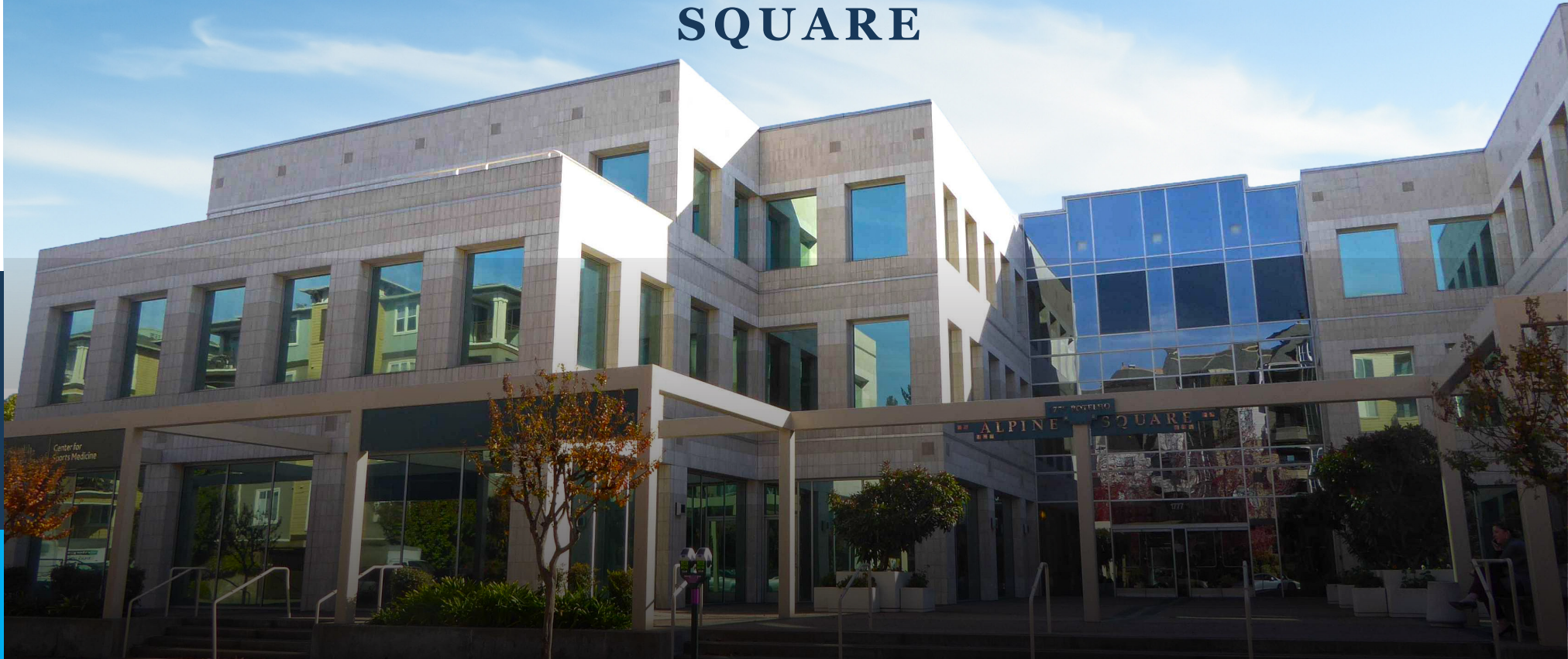
suite 370 | ±2,396 sf



ALPINE



SQUARE



The distributor of this communication is performing acts for which a real estate license is required. The information contained herein has been obtained from sources deemed reliable but has not been verified and no guarantee, warranty or representation, either express or implied, is made with respect to such information. Terms of sale or lease and availability are subject to change or withdrawal without notice. MP-353 | 12.2212 | 03.24

NEWMARK

**Curtis
Berrien**

925.974.0129
curtis.berrien@nmrk.com
CA RE License #01210499

**Alex
Grell**

510.918.5236alex.grell@
nmrk.com
CA RE License #01222891

