

Home data report

408 Main St, Frankfort, MI, US



**Total Area: 1504 sq. ft**  
Below Ground: 284 sq. ft, 1st Floor: 1220 sq. ft  
Excluded: Utility 88 sq. ft, Storage 159 sq. ft, Embedded window 19 sq. ft, Walls: 142 sq. ft

Property summary

 **2** Floors

 **1** Half baths

Home data report

408 Main St, Frankfort, MI, US



Room dimensions

Floor 1 Below grade Total:284sqft    Excluded: 247sqft

| # |         | Dimensions    | sqft       | Counted as living area |
|---|---------|---------------|------------|------------------------|
| 1 | Hall    | 3'2" x 2'10"  | 40 sq. ft  | Yes                    |
| 2 | Storage | 9'8" x 12'7"  | 122 sq. ft | No                     |
| 3 | Room    | 14'7" x 16'4" | 212 sq. ft | Yes                    |
| 4 | Storage | 8'5" x 4'2"   | 36 sq. ft  | No                     |
| 5 | Utility | 9'8" x 6'3"   | 61 sq. ft  | No                     |
| 6 | Utility | 3'8" x 6'5"   | 24 sq. ft  | No                     |

Home data report

408 Main St, Frankfort, MI, US



Room dimensions

Floor 2 Total:1220sqft    Excluded: 19sqft

| #  |              | Dimensions    | sqft       | Counted as living area |
|----|--------------|---------------|------------|------------------------|
| 7  | Office       | 9'8" x 12'9"  | 111 sq. ft | Yes                    |
| 8  | Hall         | 19'3" x 25'0" | 216 sq. ft | Yes                    |
| 9  | Meeting Room | 14'7" x 15'3" | 198 sq. ft | Yes                    |
| 10 | Foyer        | 4'10" x 12'4" | 59 sq. ft  | Yes                    |
| 11 | Reception    | 9'10" x 8'2"  | 85 sq. ft  | Yes                    |
| 12 | Office       | 12'11" x 8'4" | 88 sq. ft  | Yes                    |
| 13 | Office       | 12'11" x 8'3" | 87 sq. ft  | Yes                    |
| 14 | Bath         | 3'8" x 7'4"   | 27 sq. ft  | Yes                    |
| 15 | Office       | 9'8" x 13'1"  | 114 sq. ft | Yes                    |
| 16 | Office       | 9'8" x 15'3"  | 148 sq. ft | Yes                    |

1 Floor 1 - Hall



Dimensions: 3'2" x 2'10"  
Area: 40 sq. ft  
Counted as living area: Yes

Heated: Yes  
Finished: Yes  
Enclosed: Yes  
Contiguous: Yes  
Permitted: Yes  
Wet space: No  
Addition: No  
Conversion: No

2 Floor 1 - Storage



Dimensions: 9'8" x 12'7"  
Area: 122 sq. ft  
Counted as living area: No

Heated: No  
Finished: Yes  
Enclosed: No  
Contiguous: Yes  
Permitted: Yes  
Wet space: No  
Addition: No  
Conversion: No

3 Floor 1 - Room



Dimensions: 14'7" x 16'4"  
Area: 212 sq. ft  
Counted as living area: Yes

Heated: Yes  
Finished: Yes  
Enclosed: Yes  
Contiguous: Yes  
Permitted: Yes  
Wet space: No  
Addition: No  
Conversion: No

4 Floor 1 - Storage



Dimensions: 8'5" x 4'2"  
Area: 36 sq. ft  
Counted as living area: No

Heated: No  
Finished: Yes  
Enclosed: No  
Contiguous: Yes  
Permitted: Yes  
Wet space: No  
Addition: No  
Conversion: No

5 Floor 1 - Utility



Dimensions: 9'8" x 6'3"  
Area: 61 sq. ft  
Counted as living area: No

Heated: Yes  
Finished: No  
Enclosed: Yes  
Contiguous: Yes  
Permitted: Yes  
Wet space: No  
Addition: No  
Conversion: No

6 Floor 1 - Utility



Dimensions: 3'8" x 6'5"  
Area: 24 sq. ft  
Counted as living area: No

Heated: Yes  
Finished: No  
Enclosed: Yes  
Contiguous: Yes  
Permitted: Yes  
Wet space: No  
Addition: No  
Conversion: No

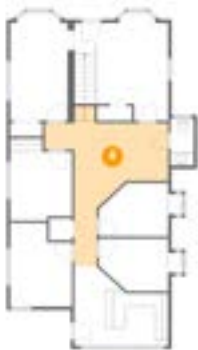
7 Floor 2 - Office



Dimensions: 9'8" x 12'9"  
Area: 111 sq. ft  
Counted as living area: Yes

Heated: Yes  
Finished: Yes  
Enclosed: Yes  
Contiguous: Yes  
Permitted: Yes  
Wet space: No  
Addition: No  
Conversion: No

8 Floor 2 - Hall



Dimensions: 19'3" x 25'0"  
Area: 216 sq. ft  
Counted as living area: Yes

Heated: Yes  
Finished: Yes  
Enclosed: Yes  
Contiguous: Yes  
Permitted: Yes  
Wet space: No  
Addition: No  
Conversion: No

9 Floor 2 - Meeting Room



Dimensions: 14'7" x 15'3"  
Area: 198 sq. ft  
Counted as living area: Yes

Heated: Yes  
Finished: Yes  
Enclosed: Yes  
Contiguous: Yes  
Permitted: Yes  
Wet space: No  
Addition: No  
Conversion: No

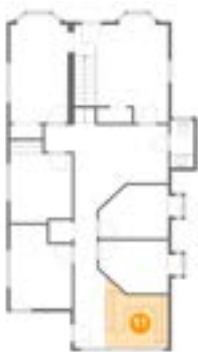
10 Floor 2 - Foyer



Dimensions: 4'10" x 12'4"  
Area: 59 sq. ft  
Counted as living area: Yes

Heated: Yes  
Finished: Yes  
Enclosed: Yes  
Contiguous: Yes  
Permitted: Yes  
Wet space: No  
Addition: No  
Conversion: No

11 Floor 2 - Reception



Dimensions: 9'10" x 8'2"  
Area: 85 sq. ft  
Counted as living area: Yes

Heated: Yes  
Finished: Yes  
Enclosed: Yes  
Contiguous: Yes  
Permitted: Yes  
Wet space: No  
Addition: No  
Conversion: No

12 Floor 2 - Office



Dimensions: 12'11" x 8'4"  
Area: 88 sq. ft  
Counted as living area: Yes

Heated: Yes  
Finished: Yes  
Enclosed: Yes  
Contiguous: Yes  
Permitted: Yes  
Wet space: No  
Addition: No  
Conversion: No

13 Floor 2 - Office



Dimensions: 12'11" x 8'3"  
Area: 87 sq. ft  
Counted as living area: Yes

Heated: Yes  
Finished: Yes  
Enclosed: Yes  
Contiguous: Yes  
Permitted: Yes  
Wet space: No  
Addition: No  
Conversion: No

14 Floor 2 - Bath



Dimensions: 3'8" x 7'4"  
Area: 27 sq. ft  
Counted as living area: Yes

Heated: Yes  
Finished: Yes  
Enclosed: Yes  
Contiguous: Yes  
Permitted: Yes  
Wet space: Yes  
Addition: No  
Conversion: No



15 Floor 2 - Office



Dimensions: 9'8" x 13'1"  
Area: 114 sq. ft  
Counted as living area: Yes

Heated: Yes  
Finished: Yes  
Enclosed: Yes  
Contiguous: Yes  
Permitted: Yes  
Wet space: No  
Addition: No  
Conversion: No

16 Floor 2 - Office



Dimensions: 9'8" x 15'3"  
Area: 148 sq. ft  
Counted as living area: Yes

Heated: Yes  
Finished: Yes  
Enclosed: Yes  
Contiguous: Yes  
Permitted: Yes  
Wet space: No  
Addition: No  
Conversion: No