

LOHI OFFICE

FOR LEASE
6,028 SF



2424 W. Caithness Place

Denver, CO 80211

Property Overview

- Former Corepower corporate space with upscale finishes and large windows
- Shared parking available as well as ample street parking
- Office suite located in the highly desirable LOHI neighborhood with private entrance
- Abundant restaurants and coffee shops within walking distance
- Walker's Paradise (**Walk Score : 96**)

Availability **6,028 SF**

Year Built **2012**

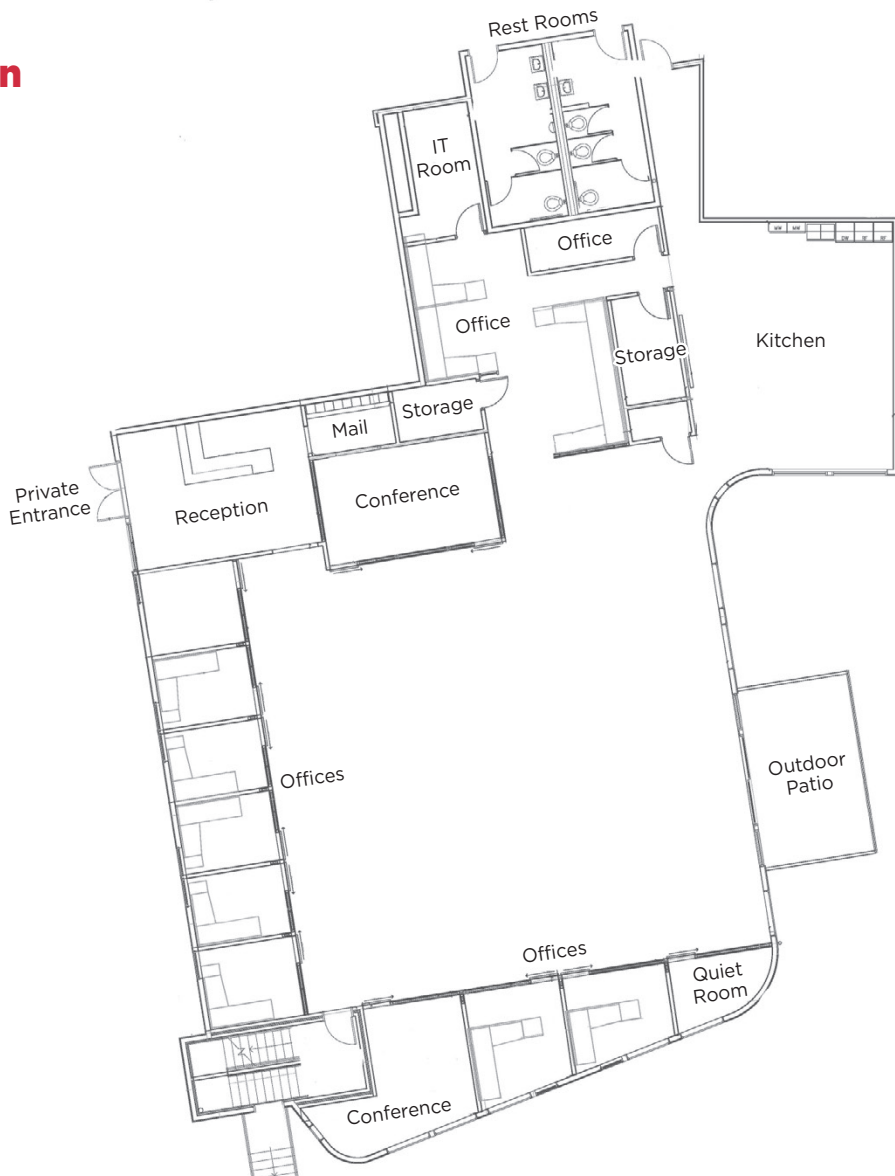
Expenses **\$13.66
for 2024**

Rate : \$35.00/SF FSG



• Reception area with private, off-street entrance

Floor Plan



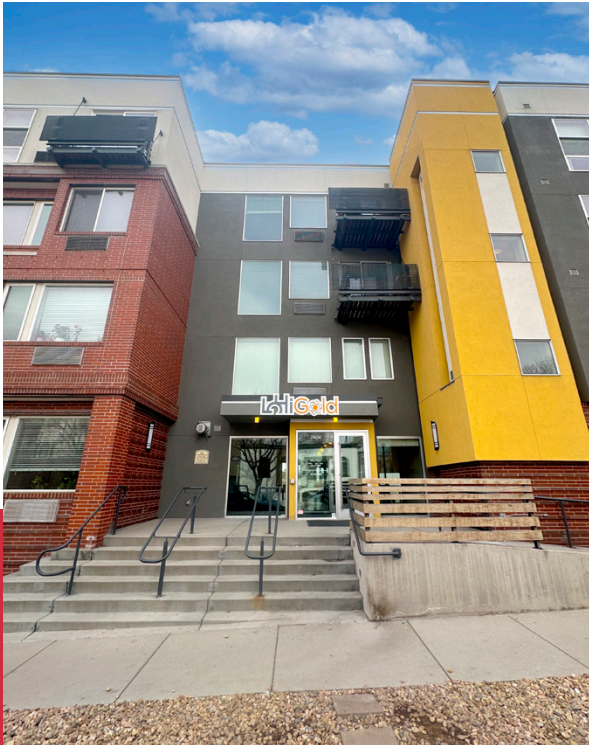


- **Modern, open layout with floor to ceiling windows and offices**
- **Contemporary design featuring upscale finishes, polished concrete, large windows**





HIGHLAND NEIGHBORHOOD



- | | |
|--------------------------------------|----------------------------------|
| 1 Senor Bear | 14 Happy Camper |
| 2 Tony P's Pizzeria | 15 Avanti Food & Beverage |
| 3 The Well Pizza & bar | 16 Root Down |
| 4 Highland Tap and Burger | 17 Noisette Restaurant |
| 5 Uncle | 18 Prost Brewing |
| 6 The Green Collective Eatery | 19 The Bindery |
| 7 The Butterfigers | 20 My Neighbor Felix |
| 8 Lady Jane | 21 Linger |
| 9 Method Coffee | 22 Little Man Ice Cream |
| 10 Bartaco | 23 Mizu Izakaya |
| 11 Williams & Graham | 24 Maine Shack |
| 12 Postino | 25 Cart Driver Lo-Hi |
| 13 fieldTRIP | |

ANA SANDMIRE
 303 565 3029
 asandomire@shamesmakovsky.com

PETER KNISELY
 720 881 7534
 pknisely@shamesmakovsky.com