



entos
design

5400 LBJ Freeway, Suite 125 Dallas, Texas 75240
P. 972.770.2222 | www.entosdesign.com

ISSUED FOR PRELIMINARY
PURPOSES ONLY.

THESE DOCUMENTS MAY NOT BE USED
FOR REGULATORY APPROVAL,
PERMITTING OR CONSTRUCTION.

These drawings are assumed to be complete and final.
It shall be the tenant/client's responsibility to review and
bring in writing any design discrepancies to the
designer's attention. Any design changes will be at
additional expense. The designer shall not be held
responsible for city, state and federal code/regulation
authority's interpretations.

Approved: _____ Date: _____

CODE INFORMATION

CODE COMPLIANCE

- BUILDING - 2018 IBC
- FIRE SAFETY - 2018 IFC
- MECHANICAL - 2018 IMC
- PLUMBING - 2018 IPC
- ELECTRICAL - 2017 NEC
- ENERGY - 2015 IECC
- ACCESSIBILITY - 2012 TAS

OTHER

- FULLY FIRE SPRINKLERED - YES
- OCCUPANCY GROUP - BUSINESS

OCCUPANCY LOAD SUMMARY - SUITE 350

| FUNCTION OF SPACE | LOAD FACTOR | AREA (S.F.) | # OF OCCUPANTS |
|--------------------------------|-------------|--------------|----------------|
| BUSINESS AREAS | 150 GROSS | 10345 | 69 |
| CONCENTRATED BUSINESS USE AREA | 50 ACTUAL | 1693 | 32 |
| ASSEMBLY - UNCONCENTRATED | 15 GROSS | 4464 | 298 |
| STORAGE AREAS | 300 GROSS | 300 | 1 |
| TOTAL | | 16802 | 400 |

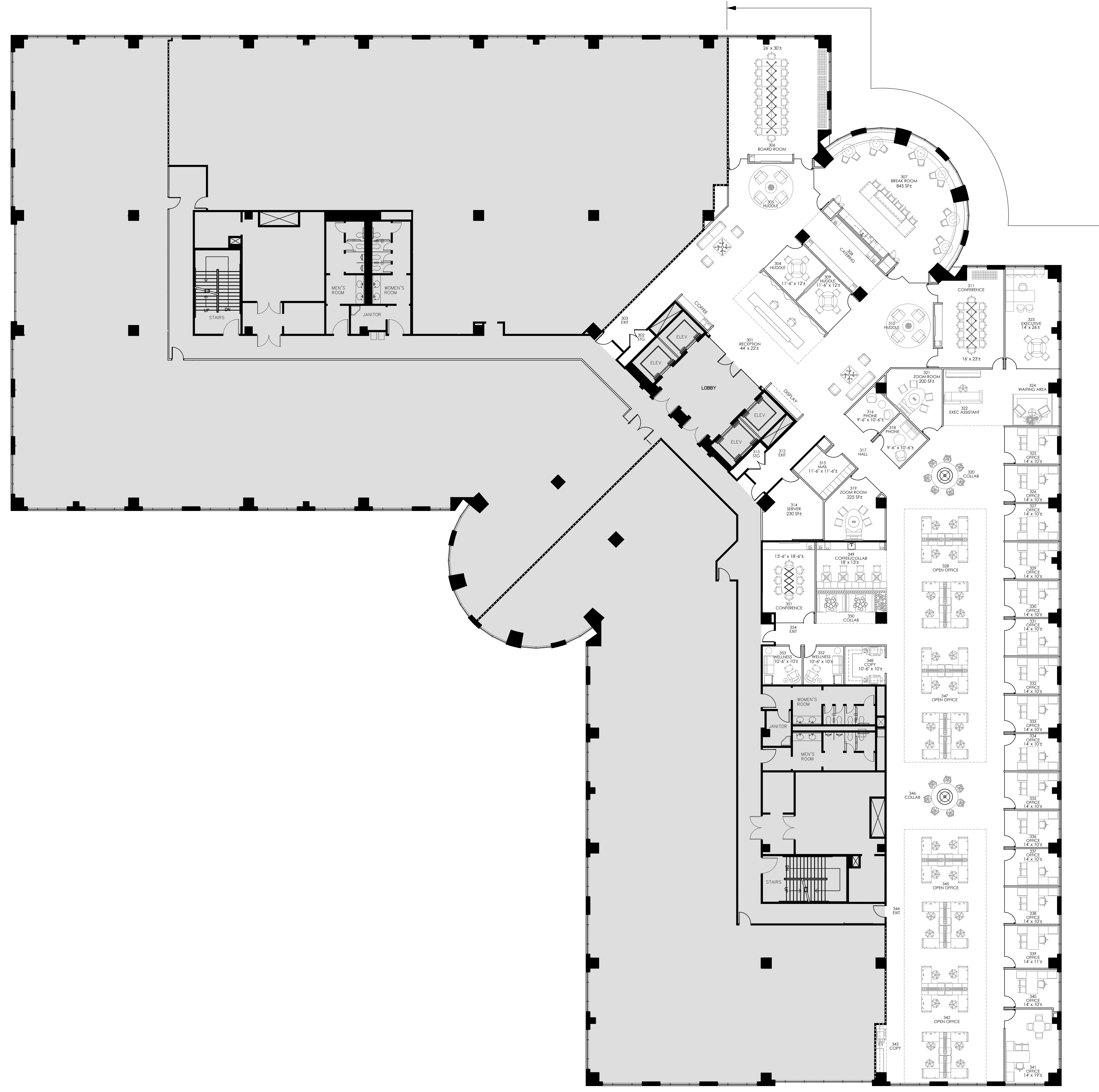
EGRESS

- 100' COMMON PATH OF EGRESS (MAX. ALLOWED)
- 75' COMMON PATH OF EGRESS (ACTUAL)
- 2 EXITS (MIN. REQUIRED)
- 5 EXITS (ACTUAL)
- 285' LONGEST DIAGONAL
- 95' EXIT SEPARATION (MIN. REQUIRED)
- 166' EXIT SEPARATION (ACTUAL)
- 50' DEAD END (MAX. ALLOWED)
- 17' DEAD END (ACTUAL)

LEGEND

(ALL SYMBOLS MAY NOT APPLY)

- GENERAL**
- 0000 ROOM NUMBER
 - OFFICE ROOM NAME
 - PHONE BOARD
 - WATER LINE WITH SHUT-OFF VALVE
 - FIRE EXTINGUISHER W/ CABINET
 - FIRE EXTINGUISHER ON HOOK
 - EXISTING PARTITION
 - NEW PARTITION
 - DEMISING PARTITION W/ SOUND INSULATION
 - PARTITION WITH SOUND INSULATION
 - HALF HEIGHT WALL
 - ONE HOUR PARTITION W/ SOUND INSULATION
 - TWO HOUR PARTITION W/ SOUND INSULATION
 - SIDELIGHT/WINDOW



SUITE 350
19,638 RSF



ROOM SIZES ARE APPROXIMATE ONLY AND ARE NOT TO BE USED FOR FINAL DETERMINATION OF FURNITURE SIZES OR PLACEMENT.

CHECKED BY: APD

PREPARED BY: APD/OM

01 Preliminary Plan
Scale: 3/32" = 1'-0"

| | | |
|-----|------------|------------|
| 2.0 | For Review | 01/13/2023 |
| 1.0 | For Review | 11/14/2022 |
| No. | Issued | Date |

**3rd Floor
Hypothetical**

Park Center
2400 Dallas Pkwy
Suite No: AS NOTED
Plano, Texas 75093

REFERENCE PLAN FOR RSF
Project ID: 20-1057-1020

Sheet Title
Preliminary Plan

Sheet Number

1.0

© 2022